

**PLEASE CHECK WWW.MOLEX.COM FOR LATEST PART INFORMATION**

**Part Number:** [0050361697](#)  
**Status:** **Active**  
**Overview:** [minifit\\_jr](#)  
**Description:** 4.20mm (.165") Pitch Mini-Fit Jr.™ Header, Dual Row, Vertical, without Snap-in Plastic Peg PCB Lock, without Drain Holes, 6 Circuits, PA Polyamide Nylon 6/6, UL 94V-0, Tin (Sn) Over Nickel (Ni) Plating, Glow Wire Compatible

**Documents:**

[3D Model](#) [RoHS Certificate of Compliance \(PDF\)](#)  
[Drawing \(PDF\)](#)

**Agency Certification**

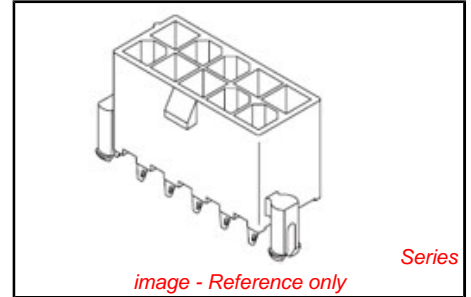
CSA	LR19980
TUV	R72081037
UL	E29179

**General**

Product Family	PCB Headers
Series	5566
Application	Wire-to-Board
Comments	Current = 13A max. per circuit when header is mated to a receptacle loaded with 45750 Mini-Fit Plus HCS™ Crimp Terminal Crimped to to 16 AWG wire. . See Molex product specification PS-45750-001 for additional current de-rating information.. High Temperature, Square Pin, Solder Type
Overview	<a href="#">minifit_jr</a>
Product Name	Mini-Fit Jr.™

**Physical**

Breakaway	No
Circuits (Loaded)	6
Circuits (maximum)	6
Color - Resin	Black
Durability (mating cycles max)	30
First Mate / Last Break	No
Flammability	94V-0
Glow-Wire Compliant	Yes
Guide to Mating Part	No
Keying to Mating Part	None
Lock to Mating Part	Yes
Material - Metal	Brass
Material - Plating Mating	Tin
Material - Plating Termination	Tin
Material - Resin	Nylon
Number of Rows	2
Orientation	Vertical
PC Tail Length (in)	0.138 In
PC Tail Length (mm)	3.50 mm
PCB Locator	Yes
PCB Retention	Yes
PCB Thickness Recommended (in)	0.062 In
PCB Thickness Recommended (mm)	1.60 mm
Packaging Type	Tray
Pitch - Mating Interface (in)	0.165 In
Pitch - Mating Interface (mm)	4.20 mm



<b>EU RoHS</b> <b>ELV and RoHS</b> <b>Compliant</b> <b>REACH SVHC</b> <b>Contains SVHC: No</b> <b>Halogen-Free</b> <b>Status</b> <b>Halogen-Free</b>	<b>China RoHS</b> 
---	--

**Need more information on product environmental compliance?**

Email [productcompliance@molex.com](mailto:productcompliance@molex.com)  
 For a multiple part number RoHS Certificate of Compliance, [click here](#)

Please visit the [Contact Us](#) section for any non-product compliance questions.

**Search Parts in this Series**  
[5566Series](#)

**Mates With**  
[5557 Mini-Fit Jr.™ Receptacle Housing](#)

Pitch - Term. Interface (in)	0.165 In
Pitch - Term. Interface (mm)	4.20 mm
Plating min: Mating (µin)	100
Plating min: Mating (µm)	2.54
Plating min: Termination (µin)	50
Plating min: Termination (µm)	1.27
Polarized to Mating Part	Yes
Polarized to PCB	Yes
Shrouded	Fully
Stackable	No
Surface Mount Compatible (SMC)	No
Temperature Range - Operating	-40°C to +105°C
Termination Interface: Style	Through Hole

**Electrical**

Current - Maximum per Contact	13A
Voltage - Maximum	600V

**Solder Process Data**

Duration at Max. Process Temperature (seconds)	5
Lead-free Process Capability	Wave Capable (TH only)
Max. Cycles at Max. Process Temperature	1
Process Temperature max. C	230

**Material Info**

Old Part Number	5566-06AS-225
-----------------	---------------

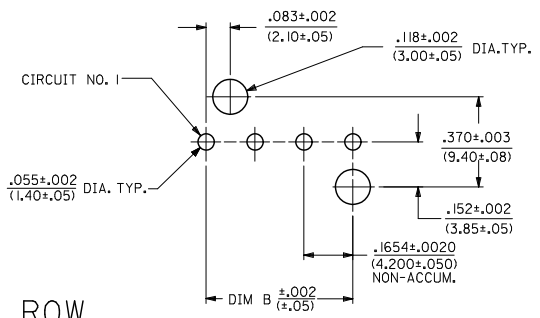
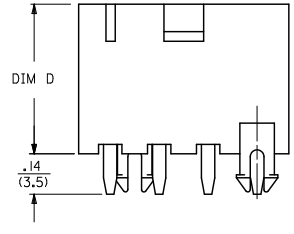
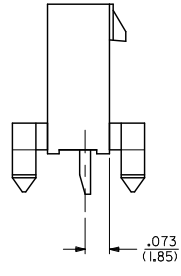
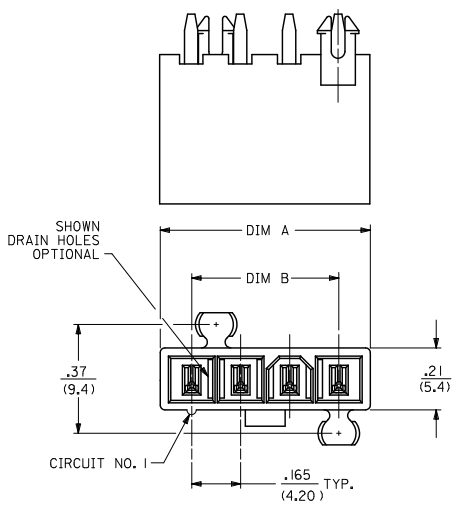
**Reference - Drawing Numbers**

Packaging Specification	PK-5566-001
Sales Drawing	SD-5566-225

This document was generated on 05/21/2010

**PLEASE CHECK [WWW.MOLEX.COM](http://WWW.MOLEX.COM) FOR LATEST PART INFORMATION**

CKT SIZE	DIM A	DIM B	DIM D
3	.54 (13.8)	.331 (8.40)	.49 (12.5)
4	.71 (18.0)	.496 (12.60)	.50 (12.8)
5	.87 (22.2)	.661 (16.80)	.50 (12.8)



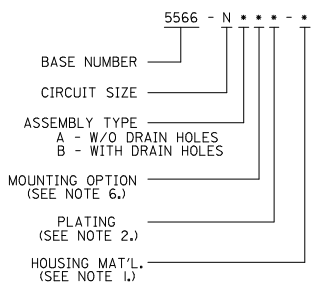
RECOMMENDED HOLE LAYOUT FOR  
.070/(1.78) MAX. THICK P. C. BOARD  
VIEWED FROM COMPONENT SIDE

4	A2
3	A2
2	A
1	A2
SHT REV	

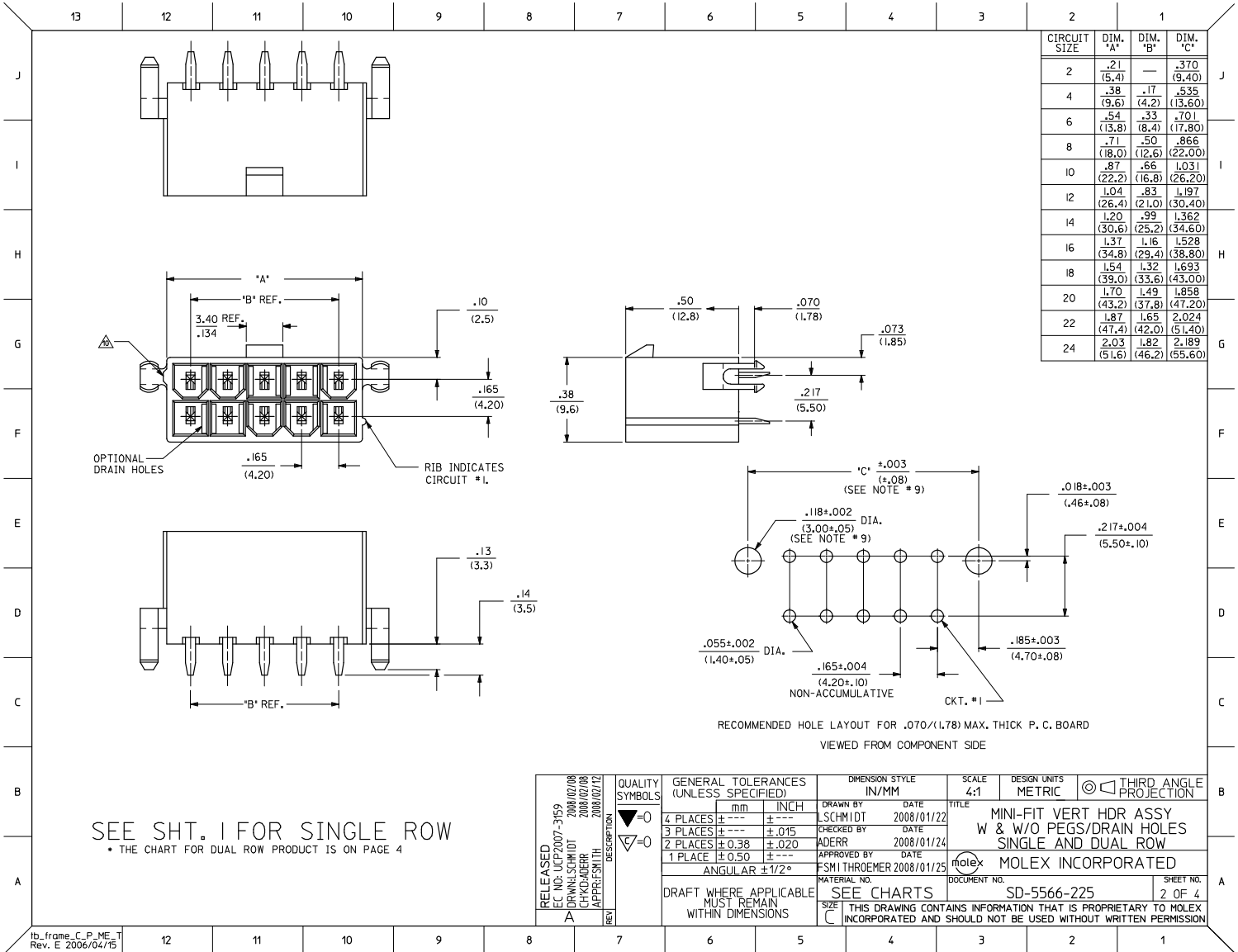
SEE SHT. 2 FOR DUAL ROW  
• THE CHART FOR SINGLE ROW PRODUCT IS ON PAGE 3

- NOTES:
- MATERIALS:  
HOUSING:  
\*225"-NYLON (PA6), UL94 V-0, COLOR: BLACK, IEC 60335-1,  
4th EDITION GLOW WIRE CAPABLE  
\*225N"-NYLON (PA6), UL94V-0, COLOR: WHITE, IEC 60335-1,  
4th EDITION GLOW WIRE CAPABLE  
TERMINALS:  
BRASS  
2. TERMINAL PLATING:  
\*S"=.000100/(0.00254) MIN. BRIGHT TIN OVER  
.000050/(0.00127) MIN. NICKEL  
3. PRODUCT SPECIFICATION: PS-5556-001  
4. PACKAGING: SEE CHARTS  
5. PART MATES WITH MINI-FIT JR. RECEPTACLE NO. 5557.  
6. MOUNTING OPTIONS:  
\*BLANK\*-DUAL ROW WITHOUT PEGS  
\*2\*-DUAL ROW WITH MOUNTING PEGS  
\*3\*-SINGLE ROW WITH MOUNTING PEGS  
7. PART IS NOT DESIGNED FOR CURRENT SHARING.  
8. PARTS ARE NOT DESIGNED TO BE MATED OR UN-MATED WHILE CIRCUITS ARE LIVE.  
9. LOCATION OF .118±.002/(3.00±.05) DIAMETER HOLES ON P.C. BOARD IS FOR OPTIONAL PEGS.  
10. ANTI-SHINGLING RIB MAY OR MAY NOT APPEAR ON HOUSINGS.  
11. PART CONFORMS TO CLASS "B" REQUIREMENTS OF COSMETIC SPECIFICATION PS-45499-002 WITH THE EXCEPTION OF DISCOLORATION, FLASH AND SINK ON THE HOUSING MEET CLASS "C" REQUIREMENTS.

LEGEND:



<b>ADD PART NUMBERS</b> IEC NO. UCP2009-1099 DRAWN: BRENNES 2009/02/12 CHKD: BELL 2008/01/24 APPR: SMITH 2010/04/09	<b>QUALITY SYMBOLS</b> 	<b>GENERAL TOLERANCES (UNLESS SPECIFIED)</b>		<b>DIMENSION STYLE</b>		<b>SCALE</b>	<b>DESIGN UNITS</b>	<b>THIRD ANGLE PROJECTION</b>			
				IN/MM		1:1	METRIC				
				mm INCH		DRAWN BY LSCHMIDT		DATE 2008/01/22		TITLE MINI-FIT VERT HDR ASSY W & W/O PEGS/DRAIN HOLES SINGLE AND DUAL ROW	
				4 PLACES ±.005 ±.015 3 PLACES ±.015 ±.020 2 PLACES ±.020 ±.030 1 PLACE ±.030 ±.050		CHECKED BY ADERR		DATE 2008/01/24		APPROVED BY FSMITH	
		ANGULAR ±1/2°		MATERIAL NO.		DOCUMENT NO.		SHEET NO.			
		DRAFT WHERE APPLICABLE MUST REMAIN WITHIN DIMENSIONS		SEE CHARTS		SD-5566-225		1 OF 4			
				SIZE C		THIS DRAWING CONTAINS INFORMATION THAT IS PROPRIETARY TO MOLEX INCORPORATED AND SHOULD NOT BE USED WITHOUT WRITTEN PERMISSION					



SEE SHT. 1 FOR SINGLE ROW  
 • THE CHART FOR DUAL ROW PRODUCT IS ON PAGE 4

RELEASED EC NO: UCP2007-3159 2008/02/08 DRAWN: SCHMIDT CHKD: ADERR 2008/02/08 APPR: SMITH 2008/02/12	QUALITY SYMBOLS ▽=0 ▽=0	GENERAL TOLERANCES (UNLESS SPECIFIED)	DIMENSION STYLE IN/MM	SCALE 4:1	DESIGN UNITS METRIC	THIRD ANGLE PROJECTION	
		4 PLACES ± --- ± --- 3 PLACES ± --- ± .015 2 PLACES ± 0.38 ± .020 1 PLACE ± 0.50 ± --- ANGULAR ± 1/2°	DRAWN BY LSCHMIDT DATE 2008/01/22	CHECKED BY ADERR DATE 2008/01/24	APPROVED BY SMI THROEMER DATE 2008/01/25	TITLE MINI-FIT VERT HDR ASSY W & W/O PEGS/DRAIN HOLES SINGLE AND DUAL ROW	
DRAFT WHERE APPLICABLE MUST REMAIN WITHIN DIMENSIONS		SEE CHARTS		MATERIAL NO. DOCUMENT NO. SD-5566-225			SHEET NO. 2 OF 4
THIS DRAWING CONTAINS INFORMATION THAT IS PROPRIETARY TO MOLEX INCORPORATED AND SHOULD NOT BE USED WITHOUT WRITTEN PERMISSION							

	13	12	11	10	9	8	7	6	5	4	3	2	1	
PLATING:	100 M.I. TIN - PLATING CODE 'S'			100 M.I. TIN - PLATING CODE 'S'			100 M.I. TIN - PLATING CODE 'S'							
DRAIN HOLES:	WITHOUT DRAIN HOLES			WITHOUT DRAIN HOLES			WITHOUT DRAIN HOLES			DRAIN HOLES:				
MTG. OPTION:	WITHOUT PEGS			WITH PEGS			WITH PEGS			MTG. OPTION:				
PACKAGING:	TRAY PACK PER PK-5566-001			TRAY PACK PER PK-5566-001			TRAY PACK PER PK-5566-001			PACKAGING:				
COLOR:	BLACK			BLACK			BLACK			COLOR:				
PART NO.	ENG. NO.	CKTS		PART NO.	ENG. NO.	CKTS		PART NO.	ENG. NO.	CKTS		PART NO.	ENG. NO.	CKTS
50-36-1882	5566-02AS-225	2		50-36-1699	5566-02A2S-225	2				2				2
50-36-1884	5566-04AS-225	4		50-36-1702	5566-04A2S-225	4				4				4
50-36-1697	5566-06AS-225	6		50-36-1704	5566-06A2S-225	6				6				6
50-36-1683	5566-08AS-225	8		50-36-1706	5566-08A2S-225	8				8				8
50-36-1741	5566-10AS-225	10		50-36-1708	5566-10A2S-225	10				10				10
50-36-1886	5566-12AS-225	12		50-36-1711	5566-12A2S-225	12				12				12
50-36-1888	5566-14AS-225	14		NOT TOOLED	5566-14A2S-225	14				14				14
50-36-1891	5566-16AS-225	16		NOT TOOLED	5566-16A2S-225	16				16				16
NOT TOOLED	5566-18AS-225	18		NOT TOOLED	5566-18A2S-225	18				18				18
NOT TOOLED	5566-20AS-225	20		NOT TOOLED	5566-20A2S-225	20				20				20
NOT TOOLED	5566-22AS-225	22		NOT TOOLED	5566-22A2S-225	22				22				22
NOT TOOLED	5566-24AS-225	24		NOT TOOLED	5566-24A2S-225	24				24				24

PLATING:	100 M.I. TIN - PLATING CODE 'S'		
DRAIN HOLES:	WITHOUT DRAIN HOLES		
MTG. OPTION:	WITH PEGS		
PACKAGING:	TRAY PACK PER PK-5566-001		
COLOR:	WHITE		
PART NO.	ENG. NO.	CKTS	
		2	
50-36-2304	5566-04A2S-225N	4	
		6	
		8	
		10	
		12	
		14	
		16	
		18	
		20	
		22	
		24	

<b>SEE SHEET 1</b> EC NO: UCP2009-1099 2009/02/12 DRAWN: BRENES 2001/01/24 CHKD: BELL APPR: SMITH 2010/04/09	QUALITY SYMBOLS = 0 = 0	GENERAL TOLERANCES (UNLESS SPECIFIED)		DIMENSION STYLE IN/MM		SCALE 1:1	DESIGN UNITS METRIC	THIRD ANGLE PROJECTION	
		4 PLACES	±---	±---	DRAWN BY	DATE	TITLE		
		3 PLACES	±---	±---	LSCHMIDT	2008/01/22	MINI-FIT VERT HDR ASSY		
		2 PLACES	±---	±---	CHECKED BY	DATE	W & W/O PEGS/DRAIN HOLES		
1 PLACE	±---	±---	ADERR	2001/01/24	SINGLE AND DUAL ROW				
ANGULAR ±---°			APPROVED BY	DATE	MOLEX INCORPORATED				
			FSMITH	2010/04/09	MATERIAL NO. SD-5566-225			SHEET NO. 4 OF 4	
DRAFT WHERE APPLICABLE MUST REMAIN WITHIN DIMENSIONS		SEE CHART		THIS DRAWING CONTAINS INFORMATION THAT IS PROPRIETARY TO MOLEX INCORPORATED AND SHOULD NOT BE USED WITHOUT WRITTEN PERMISSION					