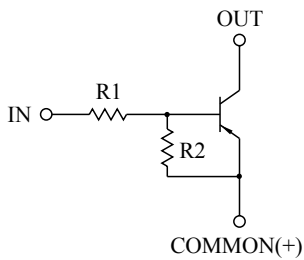


SWITCHING APPLICATION.  
INTERFACE CIRCUIT AND DRIVER CIRCUIT APPLICATION.

### FEATURES

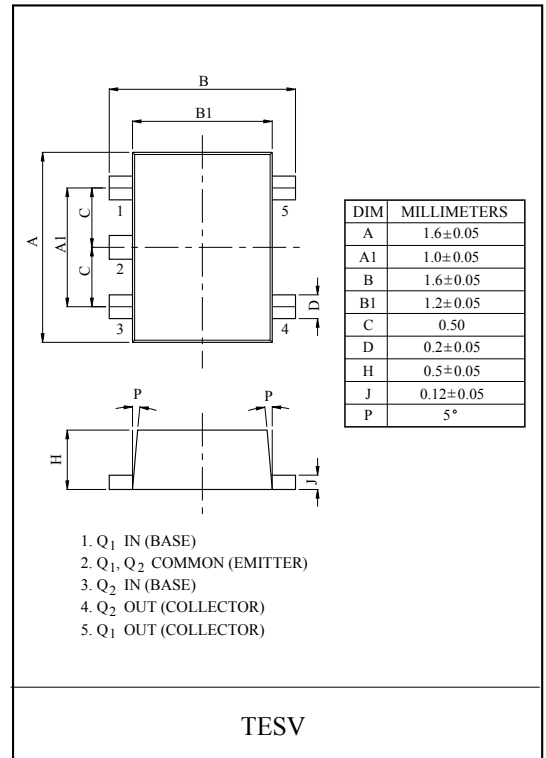
- With Built-in Bias Resistors.
- Simplify Circuit Design.
- Reduce a Quantity of Parts and Manufacturing Process.
- High Packing Density.

### EQUIVALENT CIRCUIT

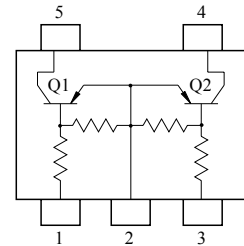


### BIAS RESISTOR VALUES

| TYPE NO. | R1(kΩ) | R2(kΩ) |
|----------|--------|--------|
| KRA551E  | 4.7    | 4.7    |
| KRA552E  | 10     | 10     |
| KRA553E  | 22     | 22     |
| KRA554E  | 47     | 47     |
| KRA555E  | 2.2    | 47     |
| KRA556E  | 4.7    | 47     |



### EQUIVALENT CIRCUIT (TOP VIEW)



### MAXIMUM RATING (Ta=25°C)

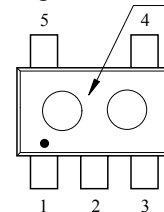
| CHARACTERISTIC            |              | SYMBOL    | RATING  | UNIT |
|---------------------------|--------------|-----------|---------|------|
| Output Voltage            | KRA551E~556E | $V_O$     | -50     | V    |
| Input Voltage             | KRA551E      | $V_I$     | -20, 10 | V    |
|                           | KRA552E      |           | -30, 10 |      |
|                           | KRA553E      |           | -40, 10 |      |
|                           | KRA554E      |           | -40, 10 |      |
|                           | KRA555E      |           | -12, 5  |      |
|                           | KRA556E      |           | -20, 5  |      |
| Output Current            | KRA551E~556E | $I_O$     | -100    | mA   |
| Power Dissipation         |              | $P_D^*$   | 200     | mW   |
| Junction Temperature      |              | $T_j$     | 150     | °C   |
| Storage Temperature Range |              | $T_{stg}$ | -55~150 | °C   |

\* Total Rating.

### MARK SPEC

| TYPE | KRA551E | KRA552E | KRA553E | KRA554E | KRA555E | KRA556E |
|------|---------|---------|---------|---------|---------|---------|
| MARK | PA      | PB      | PC      | PD      | PE      | PF      |

### Marking Type Name



# KRA551E~KRA556E

## ELECTRICAL CHARACTERISTICS (Ta=25°C)

| CHARACTERISTIC         |                | SYMBOL       | TEST CONDITION          | MIN. | TYP.  | MAX.  | UNIT |
|------------------------|----------------|--------------|-------------------------|------|-------|-------|------|
| Output Cut-off Current | KRA551E ~ 556E | $I_{O(OFF)}$ | $V_O=-50V, V_I=0$       | -    | -     | -500  | nA   |
| DC Current Gain        | KRA551E        | $G_I$        | $V_O=-5V, I_O=-10mA$    | 30   | 55    | -     |      |
|                        | KRA552E        |              |                         | 50   | 80    | -     |      |
|                        | KRA553E        |              |                         | 70   | 120   | -     |      |
|                        | KRA554E        |              |                         | 80   | 200   | -     |      |
|                        | KRA555E        |              |                         | 80   | 200   | -     |      |
|                        | KRA556E        |              |                         | 80   | 200   | -     |      |
| Output Voltage         | KRA551E ~ 556E | $V_{O(ON)}$  | $I_O=-10mA, I_I=-0.5mA$ | -    | -0.1  | -0.3  | V    |
| Input Voltage (ON)     | KRA551E        | $V_{I(ON)}$  | $V_O=-0.2V, I_O=-5mA$   | -    | -1.5  | -2.0  | V    |
|                        | KRA552E        |              |                         | -    | -1.8  | -2.4  |      |
|                        | KRA553E        |              |                         | -    | -2.1  | -3.0  |      |
|                        | KRA554E        |              |                         | -    | -2.8  | -5.0  |      |
|                        | KRA555E        |              |                         | -    | -0.8  | -1.1  |      |
|                        | KRA556E        |              |                         | -    | -0.9  | -1.3  |      |
| Input Voltage (OFF)    | KRA551E ~ 554E | $V_{I(OFF)}$ | $V_O=-5V, I_O=-0.1mA$   | -1.0 | -1.2  | -     | V    |
|                        | KRA555E ~ 556E |              |                         | -0.5 | -0.65 | -     |      |
| Transition Frequency   | KRA551E ~ 556E | $f_T^*$      | $V_O=-10V, I_O=-5mA$    | -    | 200   | -     | MHz  |
| Input Current          | KRA551E        | $I_I$        | $V_I=-5V$               | -    | -     | -1.8  | mA   |
|                        | KRA552E        |              |                         | -    | -     | -0.88 |      |
|                        | KRA553E        |              |                         | -    | -     | -0.36 |      |
|                        | KRA554E        |              |                         | -    | -     | -0.18 |      |
|                        | KRA555E        |              |                         | -    | -     | -3.6  |      |
|                        | KRA556E        |              |                         | -    | -     | -1.8  |      |

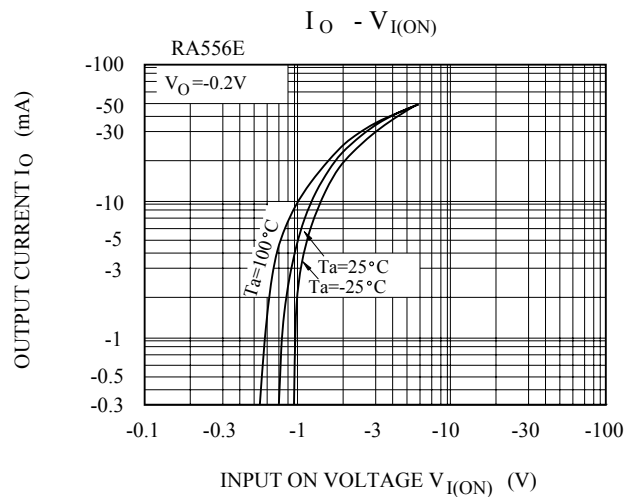
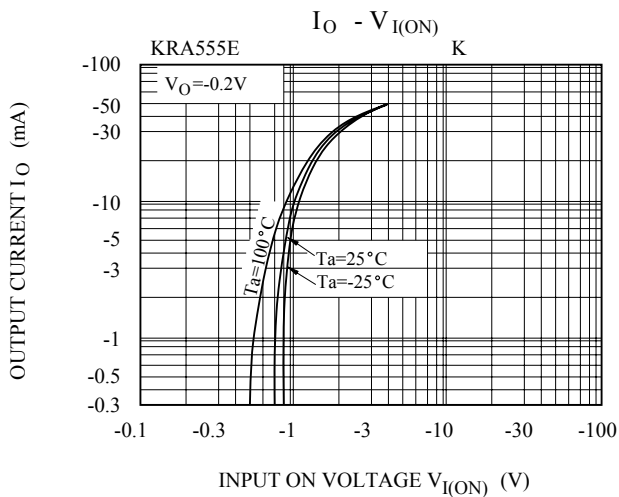
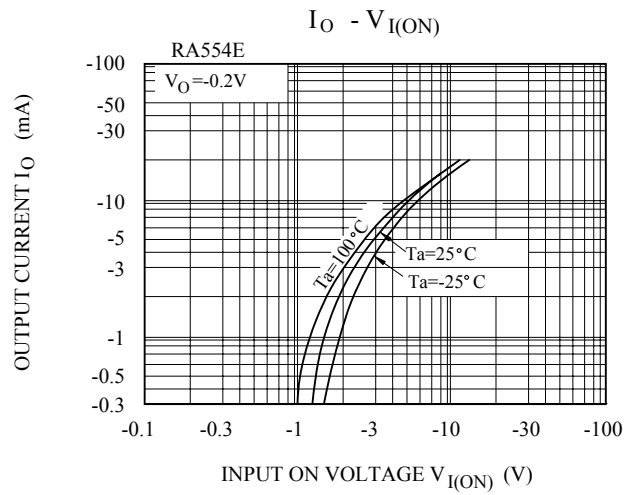
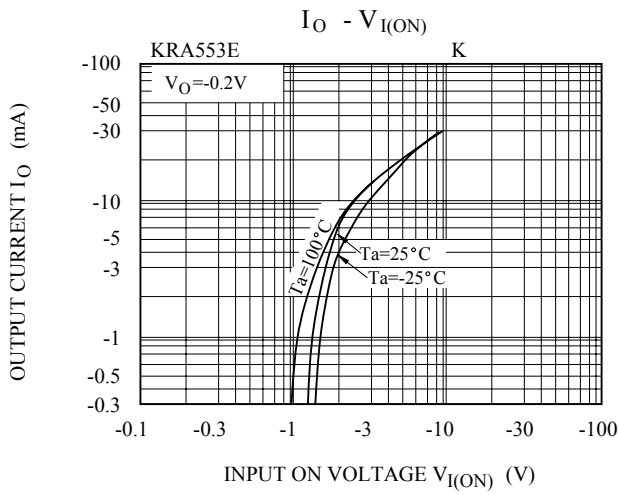
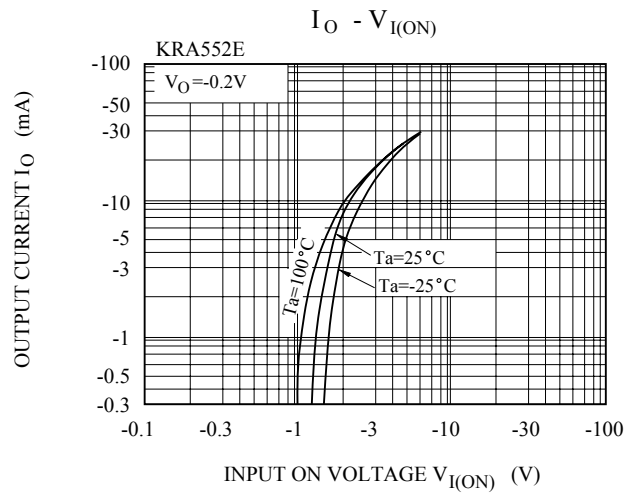
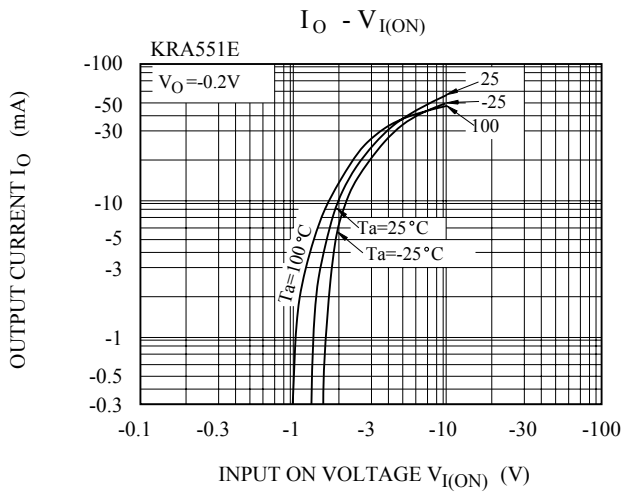
Note : \* Characteristic of Transistor Only.

# KRA551E~KRA556E

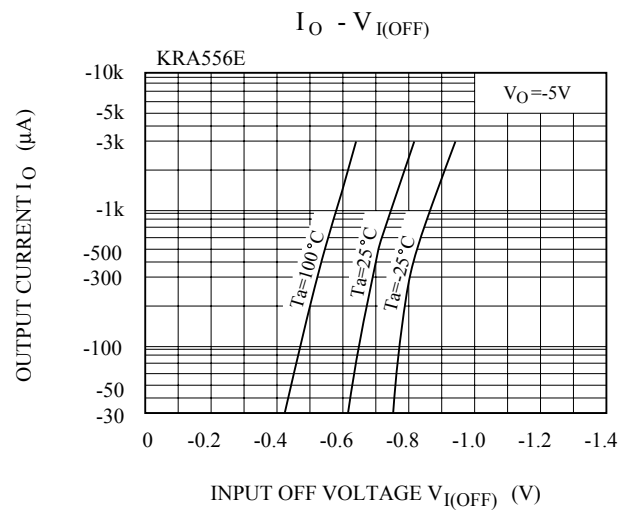
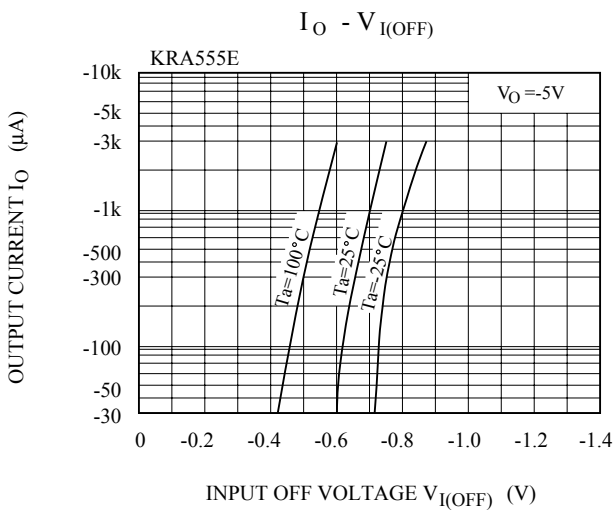
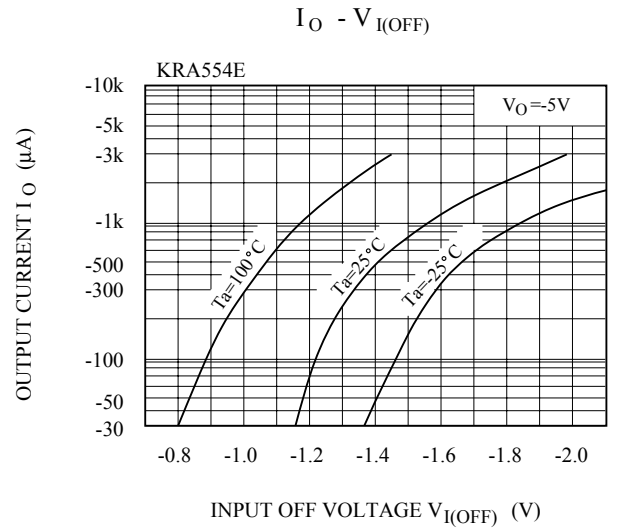
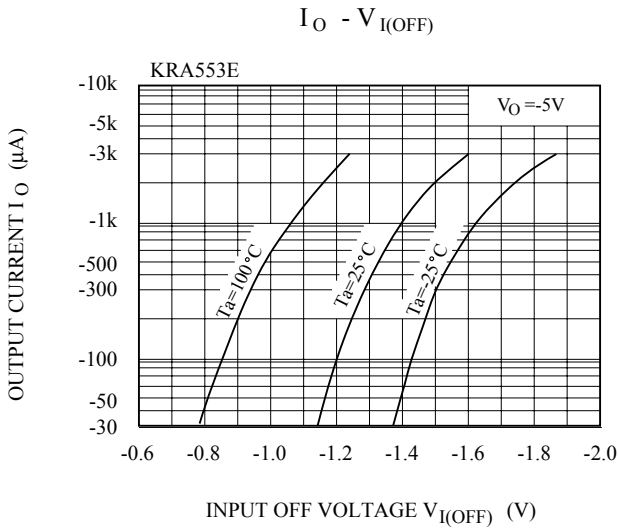
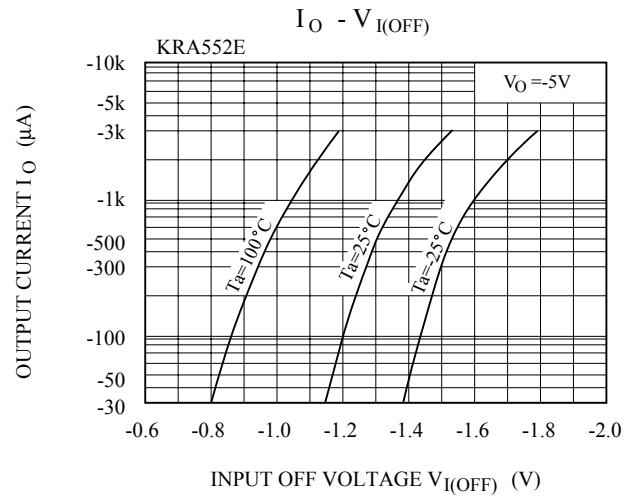
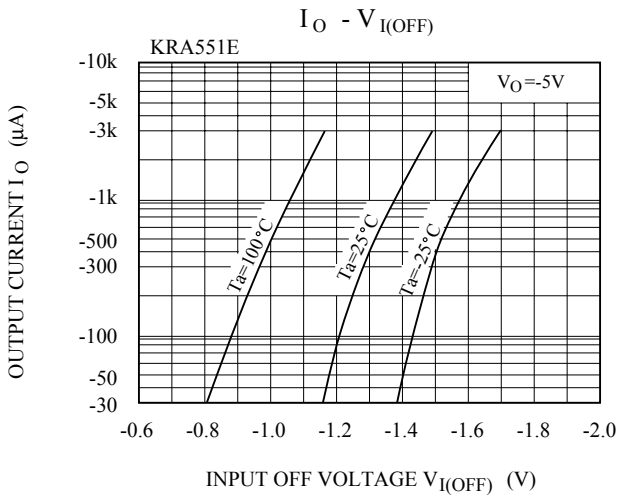
## ELECTRICAL CHARACTERISTICS (Ta=25°C)

| CHARACTERISTIC |              | SYMBOL  | TEST CONDITION   | MIN.             | TYP. | MAX. | UNIT |   |
|----------------|--------------|---------|--|------------------|------|------|------|---|
| Switching Time | Rise Time    | KRA551E | V <sub>O</sub> =-5V<br>V <sub>IN</sub> =-5V<br>R <sub>L</sub> =1kΩ | -                | 0.07 | -    | μS   |   |
|                |              | KRA552E |  | -                | 0.06 | -    |      |   |
|                |              | KRA553E |  | -                | 0.2  | -    |      |   |
|                |              | KRA554E |  | -                | 0.24 | -    |      |   |
|                |              | KRA555E |  | -                | 0.02 | -    |      |   |
|                |              | KRA556E |  | -                | 0.07 | -    |      |   |
|                | Storage Time | KRA551E |  | t <sub>stg</sub> | -    | 1.1  |      | - |
|                |              | KRA552E |  | -                | -    | 1.1  |      | - |
|                |              | KRA553E |  | -                | -    | 1.1  |      | - |
|                |              | KRA554E |  | -                | -    | 1.1  |      | - |
|                |              | KRA555E |  | -                | -    | 1.1  |      | - |
|                |              | KRA556E |  | -                | -    | 1.1  |      | - |
|                | Fall Time    | KRA551E |  | t <sub>f</sub>   | -    | 0.15 |      | - |
|                |              | KRA552E |  | -                | -    | 0.24 |      | - |
|                |              | KRA553E |  | -                | -    | 0.38 |      | - |
|                |              | KRA554E |  | -                | -    | 0.63 |      | - |
|                |              | KRA555E |  | -                | -    | 0.1  |      | - |
|                |              | KRA556E |  | -                | -    | 0.2  |      | - |

# KRA551E~KRA556E



# KRA551E~KRA556E



# KRA551E~KRA556E

