

**PLEASE CHECK WWW.MOLEX.COM FOR LATEST PART INFORMATION**

**Part Number:** [0496270382](#)  
**Status:** **Active**  
**Description:** 4.20mm (.165") Wire-to-Wire Lower TPA™ for Female Housing, 3 Circuits

**Documents:**

[Drawing \(PDF\)](#) [RoHS Certificate of Compliance \(PDF\)](#)

**General**

Product Family Crimp Housings  
 Series [49627](#)  
 Product Name N/A

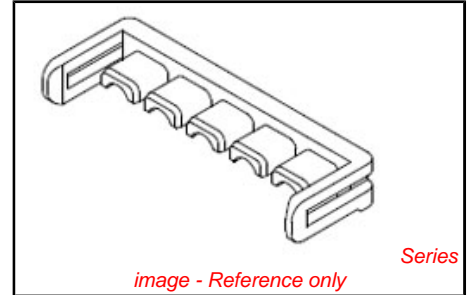
**Physical**

Circuits (maximum) 3  
 Circuits Detail 3  
 Color - Resin Red  
 Gender Female  
 Glow-Wire Compliant No  
 Keying to Mating Part None  
 Lock to Mating Part Yes  
 Material - Resin Nylon  
 Number of Rows 1  
 Packaging Type Bag  
 Panel Mount No  
 Pitch - Mating Interface (in) 0.165 In  
 Pitch - Mating Interface (mm) 4.20 mm  
 Polarized to Mating Part Yes  
 Stackable No  
 Temperature Range - Operating -40°C to +105°C

**Material Info**

**Reference - Drawing Numbers**

Sales Drawing SD-49627-001



**EU RoHS**

**ELV and RoHS Compliant**  
**REACH SVHC**  
 Not Reviewed  
**Halogen-Free Status**

**China RoHS**



**Need more information on product environmental compliance?**

Email [productcompliance@molex.com](mailto:productcompliance@molex.com)  
 For a multiple part number RoHS Certificate of Compliance, [click here](#)

Please visit the [Contact Us](#) section for any non-product compliance questions.

**Search Parts in this Series**

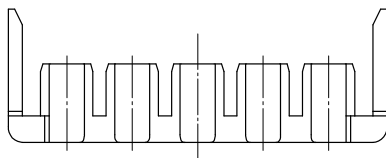
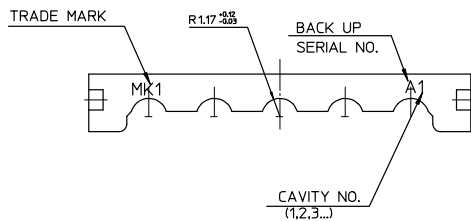
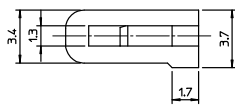
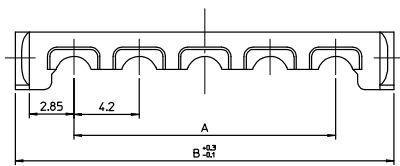
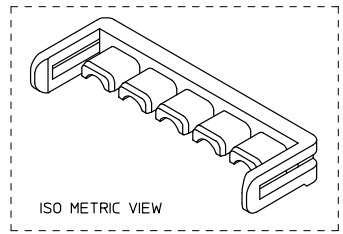
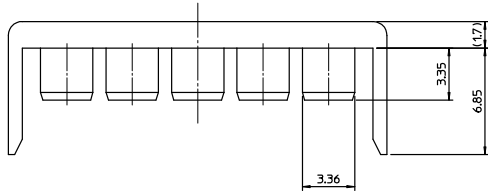
[49627Series](#)

**Mates With**

4.20mm (.165") Wire-to-Wire Male TPA™  
[49624](#)

**PLEASE CHECK WWW.MOLEX.COM FOR LATEST PART INFORMATION**

10 9 8 7 6 5 4 3 2 1



-TABLE-

| ENG NO.    | MATREIAL NO. | A    | B    | CIRCUIT |
|------------|--------------|------|------|---------|
| 49627-1182 | 496271182    | 42   | 49.5 | 11      |
| 49627-1082 | 496271082    | 37.8 | 45.3 | 10      |
| 49627-0982 | 496270982    | 33.6 | 41.1 | 09      |
| 49627-0682 | 496270682    | 21.0 | 28.5 | 06      |
| 49627-0582 | 496270582    | 16.8 | 24.3 | 05      |
| 49627-0382 | 496270382    | 8.4  | 15.9 | 03      |

NOTES

1. MATERIAL : POLYAMIDE(PA66),GLASS FILLED, UL94V-HB  
COLOR : RED
2. APPLICABLE TERMINAL : 5556 T2A SERISE.  
5556 T SERISE.
3. MATED WITH HOUSING : 49624-\*\*\*90 SERIES.
4. PRODUCT SPECIFICATION : PS-49623-001

|   |  |                               |  |  |   |                         |  |                            |                        |                              |                        |                      |  |
|---|--|-------------------------------|--|--|---|-------------------------|--|----------------------------|------------------------|------------------------------|------------------------|----------------------|--|
| ENTER DESCRIPTION<br>EC NO: KOR2008-0134<br>DRW:SKHANO1<br>CHK:DWY YANG<br>APPR:YUNSIKKIM | 2008/02/27<br>2008/02/29<br>2008/02/29 | QUALITY SYMBOLS<br>▽=0<br>▽=0 | GENERAL TOLERANCES (UNLESS SPECIFIED)  |  | DIMENSION STYLE<br>MM ONLY  |                         | SCALE<br>4:1   |                            | DESIGN UNITS<br>METRIC |                              | THIRD ANGLE PROJECTION |                      |  |
|   |  |                               |  |  | DRAWN BY<br>SK. HAN   | DATE<br>2008/01/28      | TITLE<br>4.2MM W/W TPA CONN.<br>TPA FOR FEMALE HOUSING |                            |                        |                              |                        |                      |  |
|   |  |                               |  |  | 4 PLACES ± --- ± ---<br>3 PLACES ± --- ± ---<br>2 PLACES ± 0.3 ± ---<br>1 PLACE ± 0.3 ± --- | CHECKED BY<br>WY. YANG  | DATE<br>2008/01/28                                     | MOLEX INCORPORATED         |                        |                              |                        |                      |  |
|   |  |                               |  |  | ANGULAR ± 1 °   | APPROVED BY<br>EH. JUNG | DATE<br>2008/01/28                                     | MATERIAL NO.<br>ENTER PART |                        | DOCUMENT NO.<br>SD-49627-001 |                        | SHEET NO.<br>1 OF 00 |  |
| DRAFT WHERE APPLICABLE<br>MUST REMAIN<br>WITHIN DIMENSIONS                                |  |                               | THIS DRAWING CONTAINS INFORMATION THAT IS PROPRIETARY TO MOLEX<br>INCORPORATED AND SHOULD NOT BE USED WITHOUT WRITTEN PERMISSION |  |   |                         |  |                            |                        |                              |                        |                      |  |

1b\_frame\_A3\_P\_ME\_T  
Rev. E 2006/04/15

9 8 7 6 5 4 3 2 1