

PLEASE CHECK WWW.MOLEX.COM FOR LATEST PART INFORMATION

Part Number: [0359550150](#)
Status: **Active**
Description: 6.35mm (.250") Tab Wire-to-Wire Plug Housing, 1 Circuit, Locking Window

Documents:

[Drawing \(PDF\)](#) [RoHS Certificate of Compliance \(PDF\)](#)

General

Product Family Crimp Housings
 Series [35955](#)
 Product Name N/A

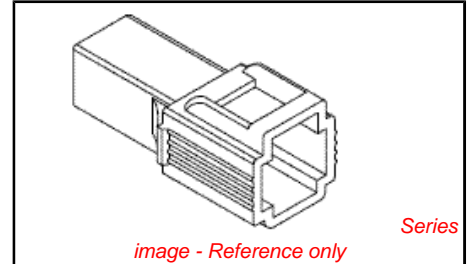
Physical

Circuits (maximum) 1
 Color - Resin Natural
 Gender Male
 Glow-Wire Compliant No
 Lock to Mating Part Yes
 Material - Resin Polyester Alloy
 Number of Rows 1
 Packaging Type Bag
 Panel Mount No
 Pitch - Mating Interface (in) 0.000 In
 Pitch - Mating Interface (mm) 0.00 mm
 Polarized to Mating Part Yes
 Stackable No
 Temperature Range - Operating -40°C to +120°C

Material Info

Reference - Drawing Numbers

Packaging Specification PK-35955-001
 Sales Drawing SD-35955-0110



EU RoHS

ELV and RoHS Compliant
REACH SVHC
 Not Reviewed
Halogen-Free Status
Not Reviewed

China RoHS



Need more information on product environmental compliance?

Email productcompliance@molex.com
 For a multiple part number RoHS Certificate of Compliance, [click here](#)

Please visit the [Contact Us](#) section for any non-product compliance questions.

Search Parts in this Series

[35955Series](#)

Mates With

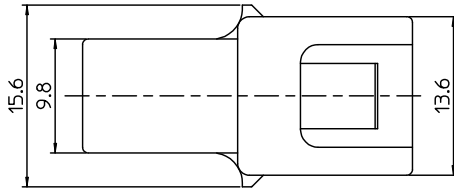
[35955-0160](#)

Use With

[35725-18*0](#)|[35725-19*0](#)|[35725-30*0](#)

PLEASE CHECK WWW.MOLEX.COM FOR LATEST PART INFORMATION

10 9 8 7 6 5 4 3 2 1



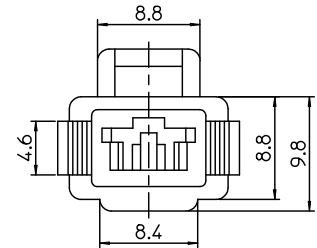
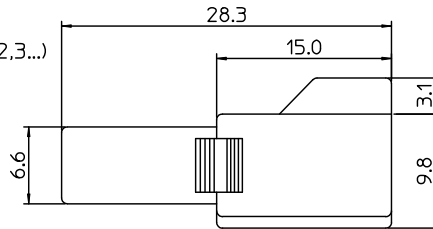
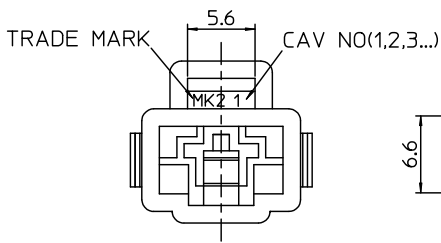
NOTES.

1. MATERIAL & COLOR & APPLICABLE TERMINAL : SEE TABLE

MATERIAL NO.	ENG NO.	MATERIAL	COLOR
359550110	35955-0110	PA66(UL94V-2)	NATURAL
359550130	35955-0130	PBT(UL94V-0)	NATURAL
359550150	35955-0150	PC/PET(UL94V-0)	NATURAL
359550151	35955-0151		BLACK
359550153	35955-0153		YELLOW
APPLICABLE TERMINAL			
35725-18*0	35725-19*0	35725-30*0	

2. MATED HOUSING & APPLICABLE TERMINAL : SEE TABLE

MATERIAL NO.	ENG NO.	MATERIAL	COLOR
359550120	35955-0120	PA66(UL94V-2)	NATURAL
359550140	35955-0140	PBT(UL94V-0)	NATURAL
359550160	35955-0160	PC/PET(UL94V-0)	NATURAL
359550161	35955-0161		BLACK
359550163	35955-0163		YELLOW
APPLICABLE TERMINAL			
35725-36*0	35725-37*0	35725-38*0	



REVISED EC NO: KOR2009-0054 DRWN: JHPARK01 2008/10/27 CHKD: WYANG 2008/10/27 APPR: YUNSIKIM 2008/10/27	QUALITY SYMBOLS	GENERAL TOLERANCES (UNLESS SPECIFIED)	DIMENSION STYLE	SCALE	DESIGN UNITS	THIRD ANGLE PROJECTION
	▽=0 ▽=0	mm INCH 4 PLACES ± --- ± --- 3 PLACES ± --- ± --- 2 PLACES ± 0.30 ± --- 1 PLACE ± 0.30 ± --- ANGULAR ± 1 °	MM ONLY	3:1	METRIC	
	DESCRIPTION	DRAFT WHERE APPLICABLE MUST REMAIN WITHIN DIMENSIONS	DRAWN BY JS.KANG DATE 1999/08/16 CHECKED BY BK.CHOI DATE 1999/08/16 APPROVED BY CW.LEE DATE 1999/08/16	TITLE	.250 RECEPTACLE HSG-1P	
	REV		MATERIAL NO. SEE TABLE	DOCUMENT NO. SD-35955-0110	MOLEX INCORPORATED SHEET NO. 1 OF 01	