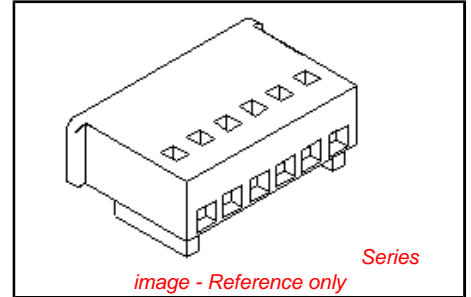


PLEASE CHECK WWW.MOLEX.COM FOR LATEST PART INFORMATION

Part Number: [0022011034](#)
Status: **Active**
Overview: sp0X
Description: 2.50mm (.098") Pitch SPOX™ Wire-to-Wire and Wire-to-Board Receptacle Housing, 3 Circuits

Documents:

3D Model	Product Specification PS-5102-002 (PDF)
Drawing (PDF)	Product Specification PS-5102-004 (PDF)
Product Specification PS-5045-001 (PDF)	RoHS Certificate of Compliance (PDF)
Product Specification PS-5045-002 (PDF)	



Agency Certification

CSA	LR19980
TUV	R72090224
UL	E29179

General

Product Family	Crimp Housings
Series	5102
Overview	sp0X
Product Name	SPOX™

Physical

Circuits (maximum)	3
Color - Resin	Natural
Flammability	94V-0
Gender	Female
Glow-Wire Compliant	No
Lock to Mating Part	Yes
Material - Resin	Nylon
Number of Rows	1
Packaging Type	Bag
Panel Mount	No
Pitch - Mating Interface (in)	0.098 In
Pitch - Mating Interface (mm)	2.50 mm
Polarized to Mating Part	Yes
Stackable	No
Temperature Range - Operating	-40°C to +105°C

Material Info

Old Part Number	5102-03
-----------------	---------

Reference - Drawing Numbers

Product Specification	PS-5045-001, PS-5045-002, PS-5102-002, PS-5102-004
Sales Drawing	SD-5102-001

<p>EU RoHS ELV and RoHS Compliant REACH SVHC Contains SVHC: No Halogen-Free Status Not Halogen-Free</p>	<p>China RoHS</p>
--	--------------------------

Need more information on product environmental compliance?

Email productcompliance@molex.com
 For a multiple part number RoHS Certificate of Compliance, [click here](#)

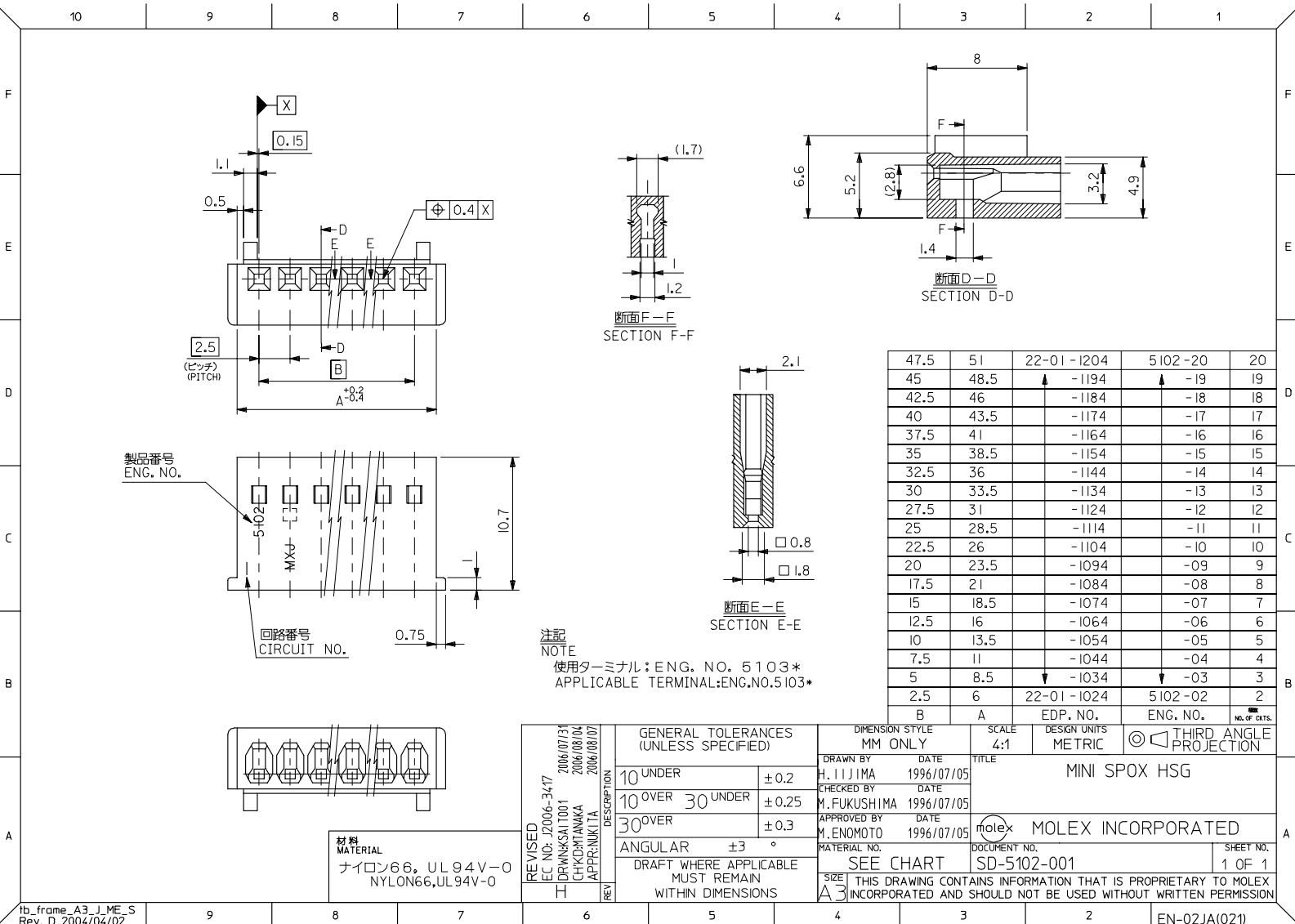
Please visit the [Contact Us](#) section for any non-product compliance questions.

Search Parts in this Series
[5102Series](#)

Mates With
[5045](#) Vertical Header, [5046](#) Right Angle Header

Use With
[5103](#) Crimp Terminals

PLEASE CHECK WWW.MOLEX.COM FOR LATEST PART INFORMATION



製品番号
ENG. NO.

回路番号
CIRCUIT NO.

材料
MATERIAL
ナイロン66, UL94V-0
NYLON66, UL94V-0

注記
NOTE

使用ターミナル: ENG. NO. 5103*
APPLICABLE TERMINAL: ENG. NO. 5103*

	47.5	51	22-01-1204	5102-20	20
	45	48.5	▲ -1194	▲ -19	19
	42.5	46	-1184	-18	18
	40	43.5	-1174	-17	17
	37.5	41	-1164	-16	16
	35	38.5	-1154	-15	15
	32.5	36	-1144	-14	14
	30	33.5	-1134	-13	13
	27.5	31	-1124	-12	12
	25	28.5	-1114	-11	11
	22.5	26	-1104	-10	10
	20	23.5	-1094	-09	9
	17.5	21	-1084	-08	8
	15	18.5	-1074	-07	7
	12.5	16	-1064	-06	6
	10	13.5	-1054	-05	5
	7.5	11	-1044	-04	4
	5	8.5	▼ -1034	▼ -03	3
	2.5	6	22-01-1024	5102-02	2
	B	A	EDP. NO.	ENG. NO.	NO. OF EXTS.

REVISED EC NO. J2006-347 2006/07/31 DRW:KSAI1001 2006/08/04 CHKD:HTANAKA 2006/08/04 APPR:NIKIITA 2006/08/07	GENERAL TOLERANCES (UNLESS SPECIFIED)		DIMENSION STYLE MM ONLY		SCALE 4:1	DESIGN UNITS METRIC	THIRD ANGLE PROJECTION	
	10 UNDER	±0.2	DRAWN BY H. IJIMA	DATE 1996/07/05	TITLE MINI SPOX HSG			
	10 OVER 30 UNDER	±0.25	CHECKED BY M. FUKUSHIMA	DATE 1996/07/05	MOLEX INCORPORATED			
	30 OVER	±0.3	APPROVED BY M. ENOMOTO	DATE 1996/07/05	DOCUMENT NO. SD-5102-001		SHEET NO. 1 OF 1	
H	DESCRIPTION	ANGULAR	±3 °	MATERIAL NO.	SEE CHART			THIS DRAWING CONTAINS INFORMATION THAT IS PROPRIETARY TO MOLEX INCORPORATED AND SHOULD NOT BE USED WITHOUT WRITTEN PERMISSION
DRAFT WHERE APPLICABLE MUST REMAIN WITHIN DIMENSIONS		SIZE A3		EN-02JA(021)				