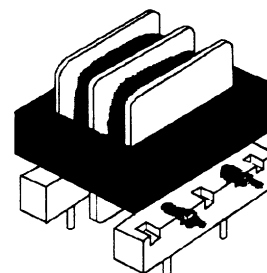


Common Mode Inductors Horizontal PCB CEP4736

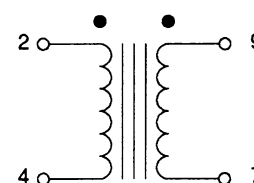
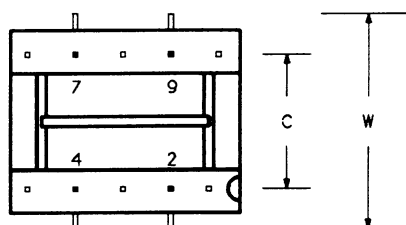
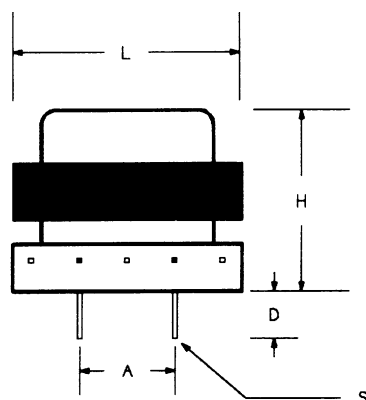


CEP4736 is a Common Mode Inductor for Switch Mode Power Supplies.

- **Inductance range:** 0.33 to 82 mH.
- **Rated current range:** 6 to 0.4 Amp.
- Split bobbins for increased dielectric strength (4000 V RMS).
- **CSA listed** (LR 47366) and **U.L. recognized** (E100878).



MECHANICAL



Dimensions, Inches

P/N	L	W	H	A	C	D	S
CEP4736	1.050	1.10	1.050	0.40	0.61	0.125	0.030 SQ

ELECTRICAL SPECIFICATION

Part No. CEP4736 -	Ind. (mH) Min.	DCR Ohms Max.	Rated Current Amp.
* 01	0.33	0.014	6.0
* 02	0.39	0.019	5.1
* 03	0.47	0.021	4.9
* 04	0.56	0.023	4.7
* 05	0.68	0.032	4.0
* 06	0.82	0.035	3.8
* 07	1.0	0.049	3.2
* 08	1.2	0.053	3.1
* 09	1.5	0.076	2.6
* 10	1.8	0.083	2.5
* 11	2.2	0.091	2.3
* 12	2.7	0.13	2.0
* 13	3.3	0.14	1.9
* 14	3.9	0.20	1.6
* 15	4.7	0.22	1.5

Part No. CEP4736 -	Ind. (mH) Min.	DCR Ohms Max.	Rated Current Amp.
* 16	5.6	0.23	1.4
* 17	6.8	0.33	1.2
* 18	8.2	0.36	1.2
* 19	10	0.50	1.0
* 20	12	0.54	1.0
* 21	15	0.61	0.9
* 22	18	0.83	0.8
* 23	22	0.92	0.7
* 24	27	1.3	0.6
* 25	33	1.4	0.6
* 26	39	1.9	0.5
* 27	47	2.1	0.5
* 28	56	2.3	0.5
* 29	68	3.3	0.4
* 30	82	3.6	0.4

CEP4736