

V Series Power & Line Voltage Select Slide Switches

Features/Benefits

- Ratings up to 10 AMPS
- Snap-in panel and PC mounting
- Actuators with screwdriver slot
- Quick connect terminals available
- RoHS compliant



Typical Applications

- Appliances



Specifications

CONTACT RATING: 10.1 AMPS @ 125 V AC; 4 AMPS @ 28 V DC;
5 AMPS @ 250 V AC (UL/CSA). 2.0 (0.5) AMPS @ 250 V AC,
T85 (VDE).

ELECTRICAL LIFE: 10,000 make-and-break cycles at full load.

CONTACT RESISTANCE: Below 10 m Ω typ. initial
@ 2-4 V DC, 100 mA.

INSULATION RESISTANCE: $10^9 \Omega$ min.

DIELECTRIC STRENGTH: 1,000 Vrms min. @ sea level.

OPERATING TEMPERATURE: -30°C to +85°C.

NOTE: Any models supplied with Q, B or G contact material are RoHS compliant.

NOTE: Specifications and materials listed above are for switches with standard options.
For information on specific and custom switches, consult Customer Service Center.

Materials

HOUSING: 6/6 nylon (UL94V-2), black.

TOP PLATE: 6/6 nylon (UL94V-2), black.

ACTUATOR: Glass filled polyester (UL94V-0), '01 and 02' styles,
black (standard); '12, 13 and 14' styles, red (standard).

CONTACTS: Copper, silver plated.

TERMINALS: Copper, silver plated.

CONTACT SPRING: Music wire or stainless steel.

TERMINAL SEAL: Epoxy.

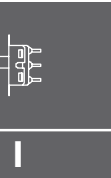
Build-A-Switch

To order, simply select desired option from each category and place in the appropriate box. Available options are shown and described on pages I-34 through I-36. For additional options not shown in catalog, consult Customer Service Center.

<div>□ □ □ □ □ □ □ □ □ □ □ □</div>	
Switch Function	Actuator
V802 DPDT	12 Screwdriver slot
V701 SPST	01 .290" high
V702 SPDT	02 .290" high with markings
V801 DPST	13 Screwdriver slot
	14 Screwdriver slot with markings
	Mounting Style
	SS Panel with mounting ears
	MA Right angle, PC thru-hole
	MS PC Thru-hole
	S2 Snap-in panel
	SL Right angle, panel with mounting ears
	Terminations
	05 Quick connect
	02 PC thru-hole
	08 Right angle PC thru-hole
	Contact Material
	Q Silver
	Seal
	NONE No seal
	E Epoxy seal



Dimensions are shown: Inches (mm)
Specifications and dimensions subject to change



Slide

V Series Power & Line Voltage Select Slide Switches

SWITCH FUNCTION

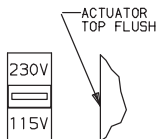
NO. POLES	MODEL NO.	SWITCH FUNCTION	SCHEMATIC	AVAILABLE MOUNTING STYLES
SP	V701	SPST		ALL
	V702	SPDT		ALL

All models with all options.
Contacts make on side actuator thrown.

NO. POLES	MODEL NO.	SWITCH FUNCTION	SCHEMATIC	AVAILABLE MOUNTING STYLES
DP	V801	DPST		ALL
	V802	DPDT		ALL

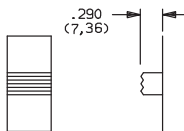
ACTUATOR

12 SCREWDRIVER SLOT
WITH MARKING



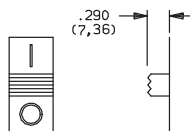
Actuator color is red with white 115V-230V markings (std.).

01 .290" HIGH



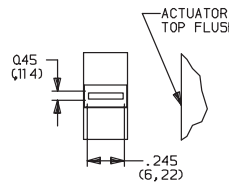
Actuator color is black.

02 .290" HIGH
WITH MARKINGS



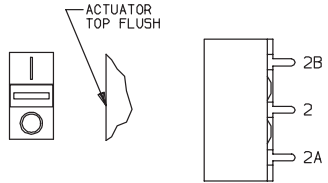
markings are reversed on V702 and V802 models. Actuator color is black with white markings (std.).

13 SCREWDRIVER SLOT
NO MARKING



Actuator color is red.

14 SCREWDRIVER SLOT
WITH MARKINGS



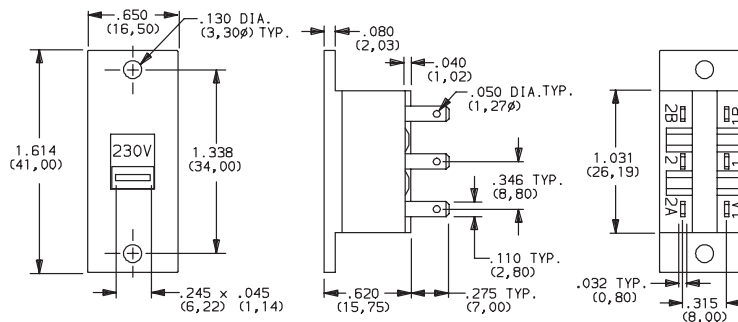
Markings are reversed on V702 and V802 models. Actuator color is red with white markings (std.). **Note:** Orientation of actuator markings and terminals.

MOUNTING STYLE

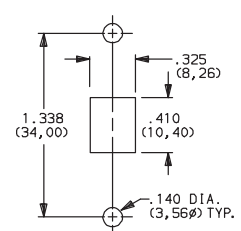
SS PANEL WITH MOUNTING EARS



V80212SS05Q
DPDT



PANEL MOUNTING



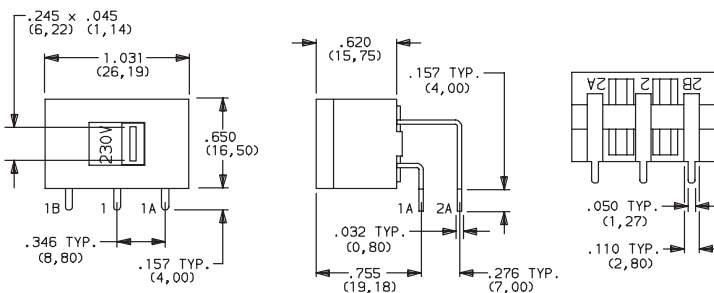
AVAILABLE WITH:

Models: All
Terminations: 02 and 05

MA RIGHT ANGLE, PC THRU-HOLE



V80212MA08Q
Horizontal Actuation
DPDT



AVAILABLE WITH:

Models: All
Terminations: 08

PC MOUNTING

PC mount, side actuated.
For mounting information,
see TERMINATIONS section, page I-36.



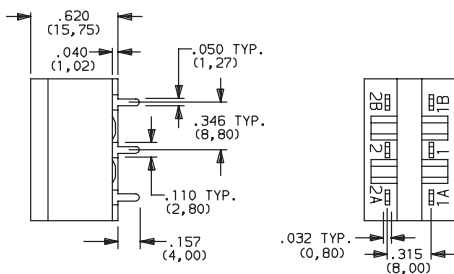
Dimensions are shown: Inch (mm)

Specifications and dimensions subject to change

www.ck-components.com

C&K

MOUNTING STYLE

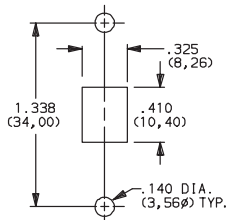


PC mount, top actuated.
For mounting information,
see TERMINATIONS section, page I-36.



Technical drawing of the actuator assembly showing dimensions and labels:

- Overall width: 1.614 (41,00)
- Distance from left edge to center of 230V terminal: 1.338 (34,00)
- Distance from center of 230V terminal to center of screwdriver slot: .400 (10,16)
- Distance from center of screwdriver slot to right edge: .245 (6,22)
- Distance from center of screwdriver slot to right edge (total): .315 (8,00)
- Distance from center of screwdriver slot to right edge (total): .140 (3,56)
- Distance from center of screwdriver slot to right edge (total): .045 (1,14)
- Labels: 230V, 230V/115V HOT STAMPED ON ACTUATOR, SCREWDRIVER SLOT



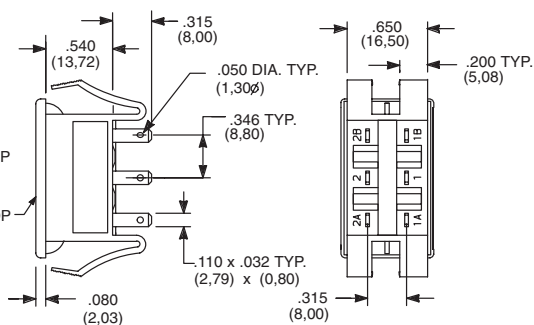
All models with 08 terminations



V80213SL08Q
Horizontal Actuation
DPDT

Technical drawing of the actuator assembly showing dimensions and labels:

- Top width: .750 (19,05)
- Left height: 1.300 (33,02)
- Bottom width: .245 (6,22)
- Internal feature: .045 x .045 DEEP (1,14) x (1,14)
- Label: ACTUATOR TOP FLUSH



Panel thickness:
.020-.200 THK.
(0,50)(5,08)

All models with 02 & 05 terminations



V80212S205Q
DPDT



Third Angle Projection

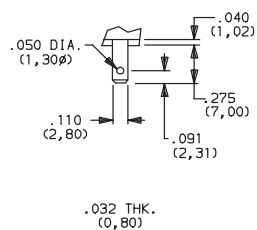
Dimensions are shown: Inches (mm)
Specifications and dimensions subject to change

C&K

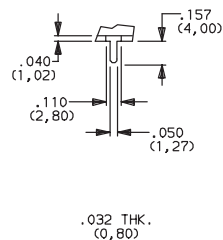
V Series Power & Line Voltage Select Slide Switches

TERMINATIONS

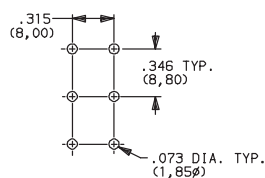
05 QUICK CONNECT



02 PC THRU-HOLE

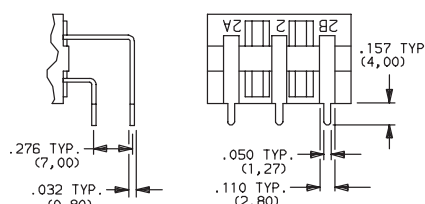


PC MOUNTING



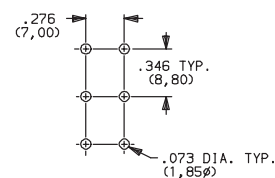
MS, SS Mounting Styles.

08 PC THRU-HOLE



Not available with 'MS, SS or S2' mounting styles.

PC MOUNTING



MA, SL Mounting Styles.

CONTACT MATERIAL

OPTION CODE	CONTACT MATERIAL	RATINGS	
Q	SILVER ¹	POWER	10.1 AMPS @ 125 V AC; 4 AMPS @ 28 V DC; 5 AMPS @ 250 V AC (UL/CSA); 2.0 (0.5) AMPS @ 250 V AC, T85 (VDE).

* Note: See Technical Data section of this catalog for RoHS compliant and compatible definitions and specifications.

¹ CONTACTS & TERMINALS: Copper, silver plated (standard with all termination options).

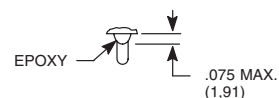
All models with all options. V70X and V80X models .

NOTE: Any models supplied with Q contact material are RoHS compliant.

SEAL

NONE NO SEAL

E EPOXY SEAL



C&K



Dimensions are shown: Inch (mm)
Specifications and dimensions subject to change

www.ck-components.com