

**Surface Mount
Ultrafast Power Rectifiers**

Ideally suited for high voltage, high frequency rectification, or as free wheeling and protection diodes in surface mount applications where compact size and weight are critical to the system.

- * Low Power Loss, High efficiency
- * Glass Passivated chips junction
- * 150 °C Operating Junction Temperature
- * Low Stored Charge Majority Carrier Conduction
- * Low Forward Voltage Drop , High Current Capability
- * High-Switching Speed 35 & 50 Nanosecond Recovery Time
- * Small Compact Surface Mountable Package with J-Bend Lead
- * Plastic Material used Carries Underwriters Laboratory Flammability Classification 94V-O

**ULTRA FAST
RECTIFIERS**

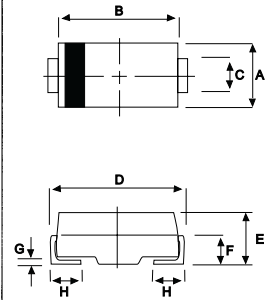
**1.0 AMPERES
50 – 400 VOLTS**



DO-214AC(SMA)

MAXIMUM RATINGS

Characteristic	Symbol	SU						Unit
		11	12	13	14	15	16	
Peak Repetitive Reverse Voltage Working Peak Reverse Voltage DC Blocking Voltage	V_{RRM} V_{RWM} V_R	50	100	150	200	300	400	V
RMS Reverse Voltage	$V_{R(RMS)}$	35	70	105	140	210	280	V
Average Rectifier Forward Current	I_O	1.0						A
Non-Repetitive Peak Surge Current (Surge applied at rate load conditions halfwave, single phase, 60Hz)	I_{FSM}	30				25		A
Operating and Storage Junction Temperature Range	T_J, T_{stg}	- 65 to + 150						°C



DIM	MILLIMETERS	
	MIN	MAX
A	2.20	2.80
B	4.10	4.70
C	1.30	1.70
D	4.60	5.30
E	1.90	2.50
F	---	1.30
G	---	0.22
H	0.85	1.45

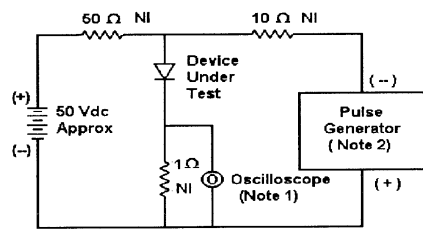
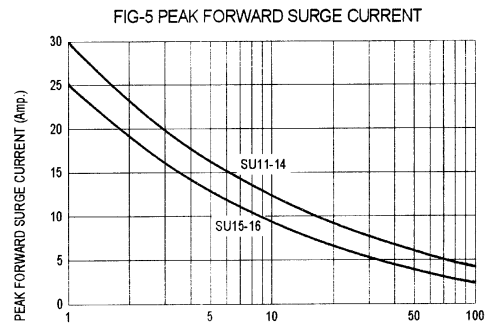
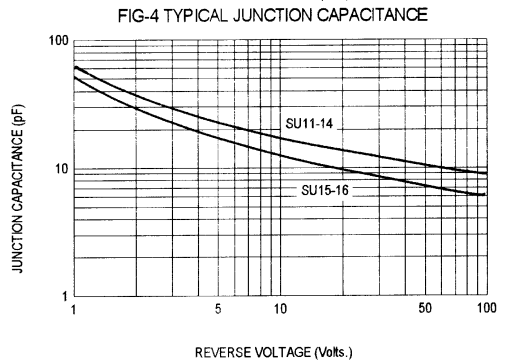
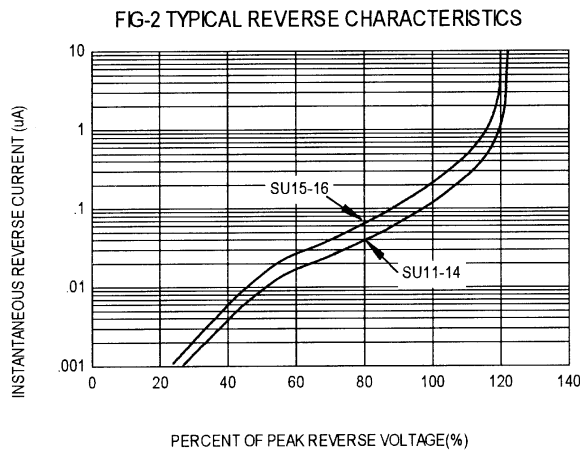
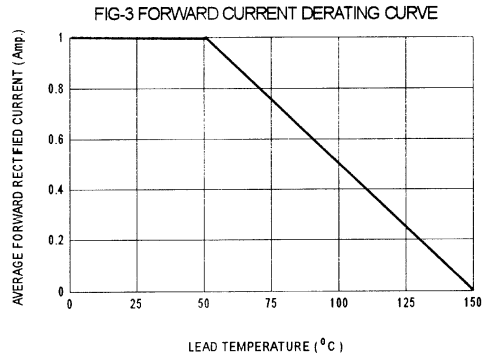
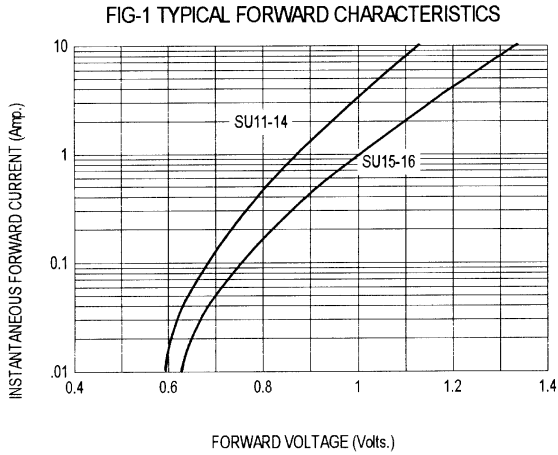
ELECTRICAL CHARACTERISTICS

Characteristic	Symbol	SU						Unit
		11	12	13	14	15	16	
Maximum Instantaneous Forward Voltage ($I_F=1.0$ Amp, $T_C = 25$ °C)	V_F	0.95				1.30		V
Maximum Instantaneous Reverse Current (Rated DC Voltage, $T_C = 25$ °C) (Rated DC Voltage, $T_C = 125$ °C)	I_R	5.0				50		uA
Reverse Recovery Time ($I_F = 0.5$ A, $I_R = 1.0$, $I_{rr} = 0.25$ A)	T_{rr}	35				50		ns
Typical Junction Capacitance (Reverse Voltage of 4 volts & f=1 MHz)	C_P	25				20		pF

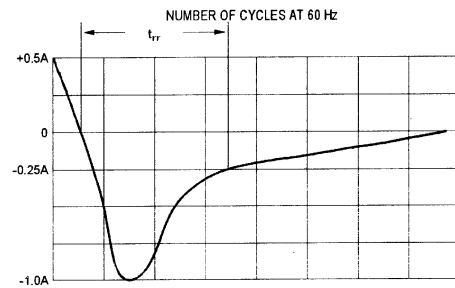
CASE---
Transfer molded
plastic

POLARITY---
Cathode indicated
polarity band

SU11 Thru SU16



Notes:
 1. Rise Time = 7 ns max. Input Impedance = 1 M Ω , 22 pF
 2. Rise Time = 10 ns max. Input Impedance = 50 Ω



Set time base for 10/20 ns/cm

Fig-6 Reverse Recovery Time Characteristic and Test Circuit Diagram