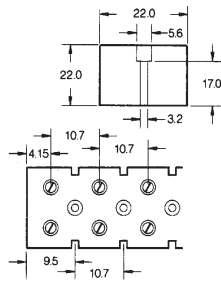


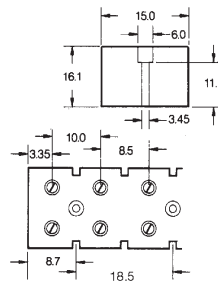
Direct Mount Terminals

Feed Through

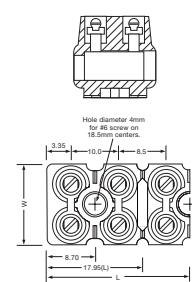
EKS 12/4



MK 3

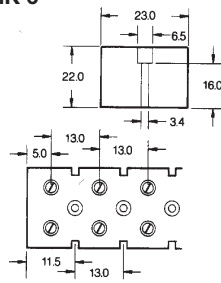


MK 3

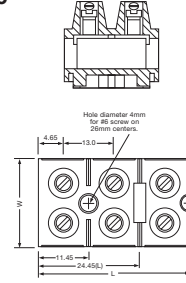


Technical Data		UL	CSA	UL	CSA	VDE	UL	CSA		
Rated voltage		300 V	300 V	300 V	300 V	500 V	300 V	300 V		
Rated current		20 A	20 A	20 A	25 A	24 A	20 A	25 A		
Wire size	AWG	#22...12	#22...12	#22...12	#22...12	2.5 mm ²	#22...12	#22...12		
Insulation stripping length	mm (in.)	5 (.20)		5 (.20)			5 (.20)			
Torque	Nm (lb. in.)	.9 (8.0)		.9 (8.0)			.9 (8.0)			
Number of poles		12		12			12			
Molding material		Polyamide (white)		Melamine			Polyamide			
Terminal Strips		Type	Length mm (in.)	Part No.	Type	Length mm (in.)	Part No.	Type	Length mm (in.)	Part No.
	12 pole	EKS 12/4	126 (4.96)	0623500000	MK 3/12	109.9 (4.33)	0243520000	MK 3/12	109.9 (4.33)	0243560000
Cutoffs										
	2 pole	EKS 2/4	20.2 (.795)	0624500000	MK 3/2	17.95 (.707)	0273820000	MK 3/2	17.95 (.707)	0273860000
	3 pole	EKS 3/4	30.9 (1.22)	0624400000	MK 3/3	27.20 (1.07)	0273920000	MK 3/3	27.20 (1.07)	0273960000
	4 pole	EKS 4/4	41.6 (1.64)	0624300000	MK 3/4	36.45 (1.44)	0274020000	MK 3/4	36.45 (1.44)	0274060000
	5 pole	EKS 5/4	52.3 (2.06)	0624200000	MK 3/5	45.70 (1.80)	0274120000	MK 3/5	45.70 (1.80)	0274160000
	6 pole	EKS 6/4	63.0 (2.48)	0624100000	MK 3/6	54.95 (2.16)	0274220000	MK 3/6	54.95 (2.16)	0274260000
	7 pole	EKS 7/4	73.7 (2.90)	0624000000	MK 3/7	64.20 (2.53)	0274320000	MK 3/7	64.20 (2.53)	0274360000
	8 pole				MK 3/8	73.45 (2.89)	0274420000	MK 3/8	73.45 (2.89)	0274460000
	9 pole							MK 3/9	82.70 (3.26)	0274560000
	10 pole				MK 3/10	91.95 (3.62)	0274620000			
	11 pole	EKS 11/4	116.5 (4.59)	0623600000	MK 3/11	101.2 (3.98)	0274720000	MK 3/11	101.2 (3.98)	0274760000

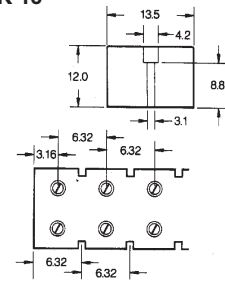
MK 6



MK 6



MK 10*



Technical Data		UL	CSA	VDE	UL	CSA	VDE	UL	CSA	VDE
Rated voltage		300 V	300 V	690 V	300 V	300 V	690 V	150 V	125 V	125 V
Rated current		30 A	40 A	41 A	30 A	40 A	41 A	25 A	25 A	24 A
Wire size	AWG	#22...10	#22...12	6 mm ²	#22...12	#22...10	6 mm ²	#22...12	#24...12	2.5 mm ²
Insulation stripping length	mm (in.)	9 (.35)			9 (.35)			6 (.24)		
Torque	Nm (lb. in.)	2.3 (20)			2.3 (20)			.45 (40)		
Number of poles		6			6			14		
Molding material		Melamine			Polyamide			Polyamide		
Terminal Strips		Type	Length mm (in.)	Part No.	Type	Length mm (in.)	Part No.	Type	Length mm (in.)	Part No.
		MK 6/6	75 (2.95)	0620120000	MK 6/6	74.90 (2.95)	0620160000	MK 10/14	88.50 (3.48)	0370160000
Cutoffs										
	2 pole	MK 6/2	24.45 (.963)	0620420000	MK 6/2	24.45 (.963)	0620460000	MK 10/2	25.28 (.995)	0448660000
	3 pole	MK 6/3	37.45 (1.47)	0620320000	MK 6/3	37.45 (1.47)	0620360000	MK 10/3	31.61 (1.24)	0448760000
	4 pole	MK 6/4	50.45 (1.99)	0620220000	MK 6/4	50.45 (1.99)	0620260000	MK 10/4	37.93 (1.49)	0448860000
	5 pole							MK 10/5	44.25 (1.74)	0448960000
	6 pole	MK 6/6	75 (2.95)	0620120000	MK 6/6	74.90 (2.95)	0620160000	MK 10/6	50.57 (1.99)	0449060000
	8 pole							MK 10/8	63.21 (2.49)	0449260000
	9 pole							MK 10/9	69.54 (2.74)	0449360000
	10 pole							MK 10/10	75.86 (2.99)	0449460000
	12 pole							MK 10/12	88.50 (3.48)	0449660000
								Mounting holes provided on cutoffs only		
		BSTb	17/6	0304600000	BSTb	17/6	0304600000			

*Can be mounted using glue or with M3 x 12 screws through the terminal screw hole. Cutoff versions provide mounting holes.