

**PLEASE CHECK WWW.MOLEX.COM FOR LATEST PART INFORMATION**

**Part Number:** [0009930300](#)  
**Status:** **Active**  
**Overview:** [kk](#)  
**Description:** 3.96mm (.156") Pitch KK® Crimp Terminal Housing, Friction Ramp, 3 Circuits, Glow Wire Compatible

**Documents:**

<a href="#">3D Model</a>	<a href="#">Product Specification PS-99020-0087 (PDF)</a>
<a href="#">Drawing (PDF)</a>	<a href="#">RoHS Certificate of Compliance (PDF)</a>

**Agency Certification**

UL E29179

**General**

Product Family	Crimp Housings
Series	<a href="#">3069</a>
Overview	<a href="#">kk</a>
Product Name	KK®

**Physical**

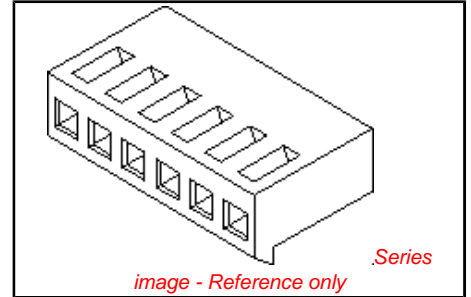
Circuits (maximum)	3
Circuits Detail	3
Color - Resin	Natural
Flammability	94V-2
Gender	Female
Glow-Wire Compliant	Yes
Lock to Mating Part	Yes
Material - Resin	Nylon
Number of Rows	1
Packaging Type	Bag
Panel Mount	No
Pitch - Mating Interface (in)	0.156 In
Pitch - Mating Interface (mm)	3.96 mm
Temperature Range - Operating	0°C to +75°C

**Material Info**

Old Part Number 3069-G03

**Reference - Drawing Numbers**

Product Specification	PS-99020-0087
Sales Drawing	SD-3069-GN***



**EU RoHS**

**ELV and RoHS Compliant**

**REACH SVHC**

Not Reviewed

**Halogen-Free**

**Status**

**Not Reviewed**

**Need more information on product environmental compliance?**

Email [productcompliance@molex.com](mailto:productcompliance@molex.com)  
 For a multiple part number RoHS Certificate of Compliance, [click here](#)

Please visit the [Contact Us](#) section for any non-product compliance questions.

**China RoHS**



**Search Parts in this Series**

[3069Series](#)

**Mates With**

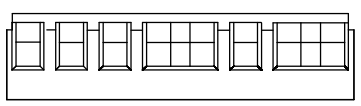
[2220](#) , [3190](#) , [3192](#) , [3243](#) , [3246](#) , [A4042](#) , [41661](#) , [41662](#) , [41671](#) , [41672](#) , [41681](#) , [41682](#) , [41701](#) , [41711](#) , [41721](#) , [41741](#) , [41761](#) , [41771](#) , [41772](#) , [41791](#) , [41792](#) , [42441](#) , [42461](#) , [42471](#) , [42491](#) , [42492](#)

**Use With**

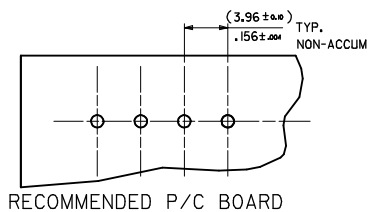
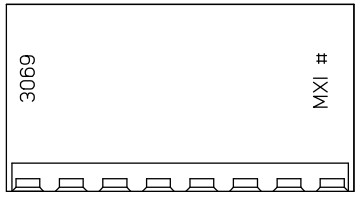
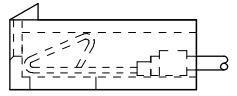
[2478](#) Crimp Terminals for 18-24 AWG, [2578](#) Crimp Terminals for 22-26 AWG

**PLEASE CHECK WWW.MOLEX.COM FOR LATEST PART INFORMATION**

13 12 11 10 9 8 7 6 5 4 3 2 1

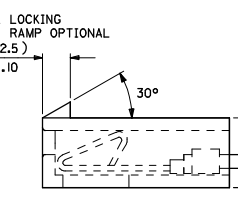
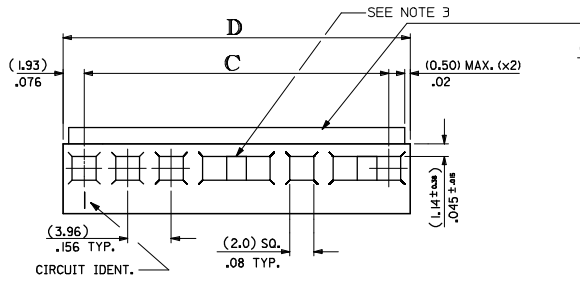


OPTIONAL WINDOW DETAIL



No. OF CCTS.	C	D	No. OF CCTS.	C	D
14	(51.51 ± .004) 2.028 ± .001	(55.37 ± .004) 2.180 ± .001	2	(3.96 ± .004) .156 ± .001	(7.82 ± .004) .308 ± .001
15	(55.47 ± .004) 2.184 ± .001	(59.33 ± .004) 2.336 ± .001	3	(7.92 ± .004) .312 ± .001	(11.79 ± .004) .464 ± .001
16	(59.44 ± .004) 2.340 ± .001	(63.30 ± .004) 2.492 ± .001	4	(11.89 ± .004) .468 ± .001	(15.75 ± .004) .620 ± .001
17	(63.40 ± .004) 2.496 ± .001	(67.26 ± .004) 2.644 ± .001	5	(15.85 ± .004) .624 ± .001	(19.71 ± .004) .776 ± .001
18	(67.36 ± .004) 2.652 ± .001	(71.22 ± .004) 2.804 ± .001	6	(19.81 ± .004) .780 ± .001	(23.67 ± .004) .932 ± .001
19	(71.32 ± .004) 2.808 ± .001	(75.18 ± .004) 2.960 ± .001	7	(23.77 ± .004) .936 ± .001	(27.64 ± .004) 1.088 ± .001
20	(75.29 ± .004) 2.964 ± .001	(79.15 ± .004) 3.116 ± .001	8	(27.74 ± .004) 1.092 ± .001	(31.60 ± .004) 1.244 ± .001
			9	(31.70 ± .004) 1.248 ± .001	(35.56 ± .004) 1.400 ± .001
			10	(35.66 ± .004) 1.404 ± .001	(39.52 ± .004) 1.556 ± .001
			11	(39.62 ± .004) 1.560 ± .001	(43.48 ± .004) 1.712 ± .001
			12	(43.59 ± .004) 1.716 ± .001	(47.45 ± .004) 1.868 ± .001
			13	(47.55 ± .004) 1.872 ± .001	(51.41 ± .004) 2.024 ± .001

- NOTES:
- FOR USE WITH TERMINAL No. 2478 OR 2578
  - ASSEMBLED CONNECTOR MATES WITH (1.14)/0.045 SQUARE OR ROUND PIN.
  - EXTENDED PIN ENTRY WINDOWS ARE POSSIBLE.



DIRECTION OF TERMINAL INSERTION.

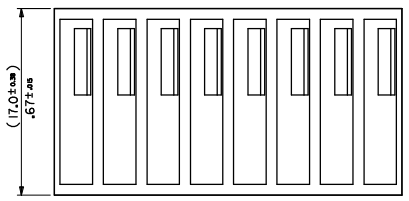
ENG. No. DESIGNATION

3069 - G N 2

\*G\* GWT (750°C) PA66 BALCK

\*2\* INDICATES HOUSING WITHOUT RAMP  
\*BLANK\* INDICATES HOUSING WITH RAMP

NO. OF CKT'S

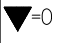
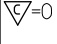


<b>WORKMANAGER ERROR</b> EC NO: E2008-0403 DRAWN BY: BRIAN RUTTLE CHKD: 2008/01/30 APPR: BMAGUIRE 2008/01/30	<b>QUALITY SYMBOLS</b> ▽=0 ▽=0	<b>GENERAL TOLERANCES (UNLESS SPECIFIED)</b>		<b>DIMENSION STYLE</b> MM/IN	SCALE 4:1 DESIGN UNITS METRIC	<b>THIRD ANGLE PROJECTION</b>
		4 PLACES ± --- ± ---	3 PLACES ± --- ± .010	DRAWN BY: BRIAN RUTTLE DATE: 10/12/2007	<b>TITLE</b> HOUSING KK CONNECTOR (3.96)/0.156 CRIMP 750 GLOW WIRE VERSION MOLEX INCORPORATED	
		2 PLACES ± 0.25 ± .014	1 PLACE ± 0.35 ± ---	CHECKED BY: B. MAGUIRE DATE: 12/12/2007		
		ANGULAR ± 2 °		APPROVED BY: B. MAGUIRE DATE: 11/12/2007		
DRAFT WHERE APPLICABLE MUST REMAIN WITHIN DIMENSIONS		MATERIAL NO. SEE CHART DOCUMENT NO. SD-3069-GN***	SHEET NO. 1 OF 2			

12 11 10 9 8 7 6 5 4 3 2 1

No. OF CCTS.	ENG. No.	PART No.	LOCKING RAMP
2	3069-G02	09-93-0200	YES
	↑ -G022	↑ -94-0200	NO
3	-G03	-93-0300	YES
	-G032	-94-0300	NO
4	-G04	-93-0400	YES
	-G042	-94-0400	NO
5	-G05	-93-0500	YES
	-G052	-94-0500	NO
6	-G06	-93-0600	YES
	-G062	-94-0600	NO
7	-G07	-93-0700	YES
	-G072	-94-0700	NO
8	-G08	-93-0800	YES
	-G082	-94-0800	NO
9	-G09	-93-0900	YES
	-G092	-94-0900	NO
10	-G10	-93-1000	YES
	-G102	-94-1000	NO
11	-G11	-93-1100	YES
	-G112	-94-1100	NO
12	-G12	-93-1200	YES
	-G122	-94-1200	NO
13	-G13	-93-1300	YES
	-G132	-94-1300	NO
14	-G14	-93-1400	YES
	-G142	-94-1400	NO
15	-G15	-93-1500	YES
	-G152	-94-1500	NO
16	-G16	-93-1600	YES
	-G162	-94-1600	NO
17	-G17	-93-1700	YES
	-G172	-94-1700	NO
18	-G18	-93-1800	YES
	-G182	-94-1800	NO
19	-G19	-93-1900	YES
	-G192	-94-1900	NO
20	↓ -G20	↓ -93-2000	YES
	3069-G202	09-94-2000	NO

SEE SHEET 1  
 E.C. NO: E2208-0403  
 DRAWN: BRUTTLE 2008/01/30  
 CHKD:  
 APPR: MAGUIRE 2008/01/30  
 REV

QUALITY SYMBOLS  
 =0  
 =0

2008/01/30  
 GENERAL TOLERANCES (UNLESS SPECIFIED)  

	mm	INCH
4 PLACES	± .010	± .0004
3 PLACES	± .012	± .0005
2 PLACES	± 0.25	± .010
1 PLACE	± 0.35	± .014

 ANGULAR ± 2 °  
 DRAFT WHERE APPLICABLE MUST REMAIN WITHIN DIMENSIONS

DIMENSION STYLE MM/IN  
 SCALE 1:1  
 DESIGN UNITS METRIC  
 THIRD ANGLE PROJECTION  
 DRAWN BY BRIAN RUTTLE 10/12/2007  
 CHECKED BY B. MAGUIRE 12/12/2007  
 APPROVED BY B. MAGUIRE 14/12/2007  
 MATERIAL NO. SEE CHART  
 SIZE A3

TITLE HOUSING KK CONNECTOR (3.96)/0.156 CRIMP 750 GLOW WIRE VERSION  
 MOLEX INCORPORATED  
 DOCUMENT NO. SD-3069-GN\*\*\*  
 SHEET NO. 2 OF 2  
 THIS DRAWING CONTAINS INFORMATION THAT IS PROPRIETARY TO MOLEX INCORPORATED AND SHOULD NOT BE USED WITHOUT WRITTEN PERMISSION