

**PLEASE CHECK WWW.MOLEX.COM FOR LATEST PART INFORMATION**

**Part Number:** **0906351503**  
**Status:** **Active**  
**Overview:** qf50  
**Description:** 1.27mm (.050") Pitch QF-50™, Single Beam, Vertical MIL/DIN Version, 0.38µm (15µ") Gold (Au), 50 Circuits

**Documents:**

3D Model [Product Specification PS-99020-0015 \(PDF\)](#)  
Drawing (PDF) [RoHS Certificate of Compliance \(PDF\)](#)

**Agency Certification**

CSA LR19980  
UL E29179

**General**

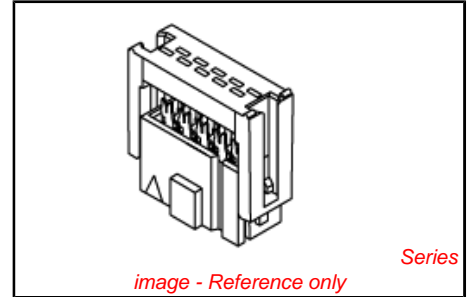
Product Family Ribbon Cable / Wire Trap Connectors  
Series 90635  
Comments Preloaded Upper Housing  
Component Type Housing  
Glow-Wire Compliant No  
Overview qf50  
Product Name QF-50™

**Physical**

Circuits (Loaded) 50  
Color - Resin Black  
Durability (mating cycles max) 300  
Entry Angle 90° Angle  
Flammability 94V-0  
Lock to Mating Part None  
Material - Metal Phosphor Bronze  
Material - Plating Mating Gold  
Material - Plating Termination Tin  
Material - Resin Polyester  
Number of Rows 2  
PCB Retention None  
Packaging Type Tray  
Pitch - Mating Interface (in) 0.050 In  
Pitch - Mating Interface (mm) 1.27 mm  
Plating min: Mating (µin) 15.2  
Plating min: Mating (µm) 0.38  
Plating min: Termination (µin) 39  
Plating min: Termination (µm) 1  
Polarized to Mating Part Yes  
Shrouded Fully  
Stackable No  
Surface Mount Compatible (SMC) N/A  
Temperature Range - Operating -25°C to +85°C  
Termination Interface: Style IDT or Pierce  
Wire Insulation Diameter 1.14mm (.045") max.  
Wire Size AWG 26, 28  
Wire/Cable Type Ribbon Cable

**Electrical**

Current - Maximum per Contact 1A  
Voltage - Maximum 250V AC/DC



**EU RoHS**

**ELV and RoHS Compliant**  
**REACH SVHC Contains SVHC: No**  
**Halogen-Free Status**

**China RoHS**



**Not Halogen-Free**

**Need more information on product environmental compliance?**

Email [productcompliance@molex.com](mailto:productcompliance@molex.com)  
For a multiple part number RoHS Certificate of Compliance, [click here](#)

Please visit the [Contact Us](#) section for any non-product compliance questions.

**Search Parts in this Series**  
90635Series

**Mates With**  
90663

**Use With**  
90170

**Application Tooling | FAQ**

*Tooling specifications and manuals are found by selecting the products below. Crimp Height Specifications are then contained in the Application Tooling Specification document.*

**Global**

Description	Product #
Semi-Automatic Bench Press PB15 C/W Cable Sensor for 90635 Connectors	0691271150
Changehead for Parallel	0690080250

**Material Info**

**Reference - Drawing Numbers**

Product Specification  
Sales Drawing

PS-99020-0015  
SDA-90635

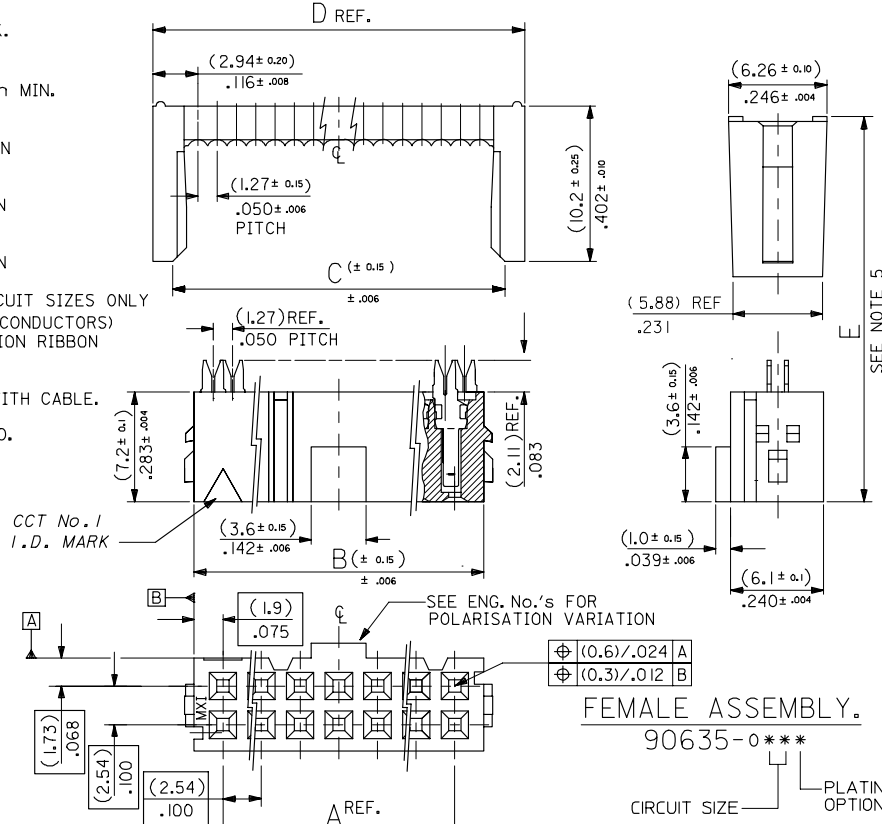
Action Handtool  
69008-0949, for  
QF-50™ and  
MX-50™ Connectors  
Arbor Press Fixture 0690200680

This document was generated on 05/31/2010

**PLEASE CHECK WWW.MOLEX.COM FOR LATEST PART INFORMATION**

10 9 8 7 6 5 4 3 2 1

- NOTES: 1. MATERIAL:  
HOUSING: POLYESTER, G.F. (UL 94V-0), COLOUR - BLACK.  
TERMINAL: PHOSPHOR BRONZE.
2. TERMINAL PLATING:  
90635-\*\*\*1: CONTACT AREA: GOLD FLASH (0.1um)/ 4um MIN.  
I.D. AREA: TIN (1um)/ 39um MIN. OVER  
NICKEL (1um)/ 39um MIN.  
90635-\*\*\*2: CONTACT AREA: GOLD (0.76um)/ 30um MIN  
I.D. AREA: TIN (1um)/ 39um MIN. OVER  
NICKEL (1um)/ 39um MIN.  
90635-\*\*\*3: CONTACT AREA: GOLD (0.38um)/ 15um MIN  
I.D. AREA: TIN (1um)/ 39um MIN. OVER  
NICKEL (1um)/ 39um MIN.  
90635-\*\*\*4: CONTACT AREA: GOLD (0.51um)/ 20um MIN  
I.D. AREA: TIN (1um)/ 39um MIN. OVER  
NICKEL (1um)/ 39um MIN.. 20 & 50 CIRCUIT SIZES ONLY
3. FOR USE WITH No. 26 & 28 AWG STRANDED WIRE (7 CONDUCTORS)  
AND No. 28 SOLID WIRE 1.14/(.045) DIA. MAX. INSULATION RIBBON  
CABLE WITH 1.27/(.050) CENTERS.
4. MATING STRAIN RELIEF: MOLEX No. 90170.
5. DIMENSION \*E\* IS TOTAL HEIGHT AFTER ASSEMBLED WITH CABLE.  
E = 10.5/(.413) REF. WITHOUT STRAIN RELIEF.  
E = (15.2)/.598 MAX. WITH STRAIN RELIEF No. 90170.  
(14.5)/.571 REF. WHEN COMPRESSED .
6. FOR PRODUCT SPECIFICATION, SEE PS 99020-0015.



FEMALE ASSEMBLY.  
90635-0\*\*\*

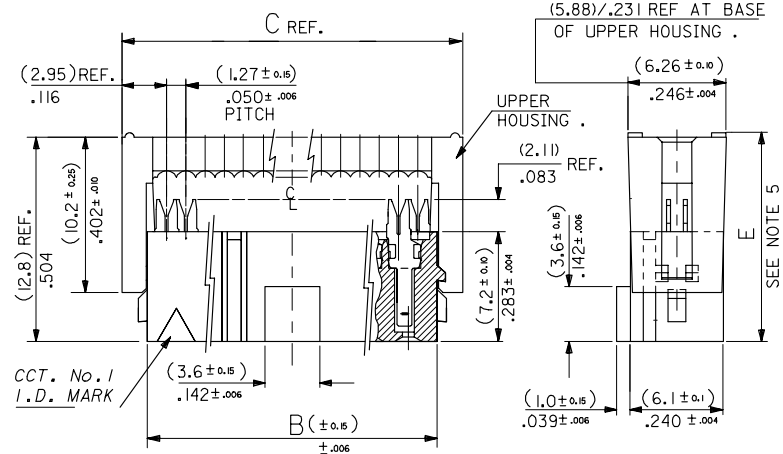
CIRCUIT SIZE PLATING OPTION  
(DOES NOT APPLY TO VOIDED OPTIONS)

64	90635-#64*	(78.74) 3.100	(82.54) 3.250	(83.31) 3.280	(85.88) 3.381
60	90635-#60*	(73.66) 2.900	(77.46) 3.050	(78.23) 3.080	(80.80) 3.181
50	90635-#50*	(60.96) 2.400	(64.76) 2.55	(65.53) 2.580	(68.10) 2.681
40	90635-#40*	(48.26) 1.900	(52.06) 2.050	(52.83) 2.080	(55.40) 2.181
34	90635-#34*	(40.64) 1.600	(44.44) 1.750	(45.21) 1.780	(47.78) 1.881
30	90635-#30*	(35.56) 1.400	(39.36) 1.550	(40.13) 1.580	(42.70) 1.681
26	90635-#26*	(30.48) 1.200	(34.28) 1.350	(35.05) 1.380	(37.62) 1.481
24	90635-#24*	(27.94) 1.100	(31.74) 1.250	(32.51) 1.280	(35.08) 1.381
20	90635-#20*	(22.86) .900	(26.66) 1.050	(27.43) 1.080	(30.00) 1.181
16	90635-#16*	(17.78) .700	(21.58) .850	(22.35) .880	(24.92) .981
14	90635-#14*	(15.24) .600	(19.04) .750	(19.81) .780	(22.38) .881
10	90635-#10*	(10.16) .400	(13.96) .550	(14.73) .580	(17.30) .681
NO. OF CKT.	ENG. NO.	A	B	C	D REF.

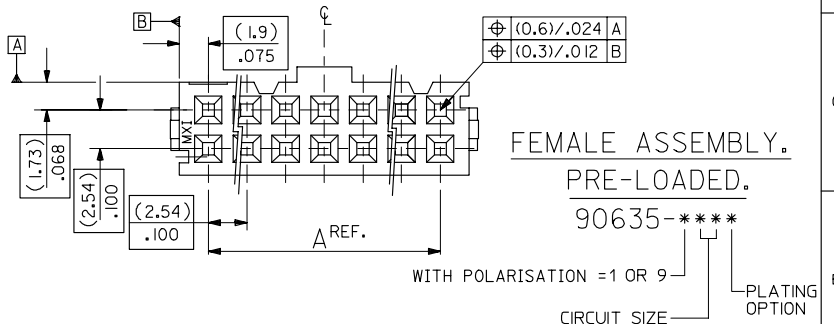
REVISED FOR POLARISATION EC NO. E2007-0495 2006/12/06 DRAWN BY: CHIKO 2006/12/07 APPR: EDMAHONY 2006/12/07	QUALITY SYMBOLS	GENERAL TOLERANCES (UNLESS SPECIFIED)	DIMENSION STYLE	SCALE	DESIGN UNITS	THIRD ANGLE PROJECTION
	$\nabla=0$ $\nabla=0$	mm INCH 4 PLACES ± --- ± --- 3 PLACES ± --- ± --- 2 PLACES ± --- ± --- 1 PLACE ± --- ± --- ANGULAR ± ---°	MM/IN	4:1	METRIC	<input checked="" type="checkbox"/> THIRD ANGLE <input type="checkbox"/> PROJECTION
	DRAFT WHERE APPLICABLE MUST REMAIN WITHIN DIMENSIONS	SEE CHART	SIZE A 3	DRAWN BY: POB DATE: 1990/09/25 CHECKED BY: JDENNEHY DATE: 2005/08/10 APPROVED BY: JDENNEHY DATE: 2005/08/10		
	MATERIAL NO.		DOCUMENT NO.		TITLE	
		SDA-90635		QIK FLECS SINGLE BEAM FEMALE ASSEMBLY		
		MOLEX INCORPORATED				
		THIS DRAWING CONTAINS INFORMATION THAT IS PROPRIETARY TO MOLEX INCORPORATED AND SHOULD NOT BE USED WITHOUT WRITTEN PERMISSION				SHEET NO. 1 OF 3

9 8 7 6 5 4 3 2 1

- NOTES: 1. MATERIAL:  
HOUSING: POLYESTER, G.F. (UL 94V-0), COLOUR - BLACK.  
TERMINAL: PHOSPHOR BRONZE.
2. TERMINAL PLATING:  
90635-\*\*\*\*1 : CONTACT AREA: GOLD FLASH (0.1um)/ 4um MIN.  
I.D. AREA: TIN (1um)/ 39um MIN. OVER  
NICKEL (1um)/ 39um MIN.  
90635-\*\*\*\*2 : CONTACT AREA: GOLD (0.76um)/ 30um MIN  
I.D. AREA: TIN (1um)/ 39um MIN. OVER  
NICKEL (1um)/ 39um MIN.  
90635-\*\*\*\*3 : CONTACT AREA: GOLD (0.38um)/ 15um MIN  
I.D. AREA: TIN (1um)/ 39um MIN. OVER  
NICKEL (1um)/ 39um MIN.  
90635-\*\*\*\*4 : CONTACT AREA: GOLD (0.51um)/ 20um MIN  
I.D. AREA: TIN (1um)/ 39um MIN. OVER  
NICKEL (1um)/ 39um MIN.
3. FOR USE WITH No. 26 & 28 AWG STRANDED WIRE (7 CONDUCTORS)  
AND No. 28 SOLID WIRE 1/4(.045) DIA. MAX. INSULATION RIBBON  
CABLE WITH 1.27(.050) CENTERS.
4. MATING STRAIN RELIEF: MOLEX No. 90170.
5. DIMENSION 'E' IS TOTAL HEIGHT AFTER ASSEMBLED WITH CABLE.  
E = 10.5(.413) REF. WITHOUT STRAIN RELIEF.  
E = (15.2)/.598 MAX. WITH STRAIN RELIEF No. 90170.  
(14.5)/.571 REF. WHEN COMPRESSED .
6. FOR PRODUCT SPECIFICATION, SEE PS 99020-0015.



64	90635-#64*	(78.74) 3.100	(82.54) 3.250	(85.88) 3.381
60	90635-#60*	(73.66) 2.900	(77.46) 3.050	(80.80) 3.181
50	90635-#50*	(60.96) 2.400	(64.76) 2.55	(68.10) 2.681
40	90635-#40*	(48.26) 1.900	(52.06) 2.050	(55.40) 2.181
	90635-9402 (CUSTOMER SPECIFIC)			
34	90635-#34*	(40.64) 1.600	(44.44) 1.750	(47.78) 1.881
30	90635-#30*	(35.56) 1.400	(39.36) 1.550	(42.70) 1.681
26	90635-#26*	(30.48) 1.200	(34.28) 1.350	(37.62) 1.481
24	90635-#24*	(27.94) 1.100	(31.74) 1.250	(35.08) 1.381
20	90635-#20*	(22.86) .900	(26.66) 1.050	(30.00) 1.181
16	90635-#16*	(17.78) .700	(21.58) .850	(24.92) .981
14	90635-#14*	(15.24) .600	(19.04) .750	(22.38) .881
10	90635-#10*	(10.16) .400	(13.96) .550	(17.30) .681
NO. OF EXT.	ENG. NO.	A	B	C



FEMALE ASSEMBLY.  
PRE-LOADED.  
90635-\*\*\*\*

REMOVED OPTION EC NO. E2007-0495 DRAWN BY: JRNES CHKD: CHIKO APPR: EDMAHONY	DESCRIPTION 2006/12/06 2006/12/07 2006/12/07	QUALITY SYMBOLS ▽=0 ▽=0	GENERAL TOLERANCES (UNLESS SPECIFIED)	DIMENSION STYLE MM/IN	SCALE 4:1	DESIGN UNITS METRIC	THIRD ANGLE PROJECTION
		4 PLACES ± --- ± --- 3 PLACES ± --- ± --- 2 PLACES ± --- ± --- 1 PLACE ± --- ± --- ANGULAR ± ---°	DRAWN BY POB 1990/09/25	DATE 1990/09/25	TITLE QIK FLECS SINGLE BEAM FEMALE ASSEMBLY, PRE-LOADED		
		DRAFT WHERE APPLICABLE MUST REMAIN WITHIN DIMENSIONS	SEE CHART	MATERIAL NO. A3	DOCUMENT NO. SDA-90635	MOLEX INCORPORATED	SHEET NO. 2 OF 3