

PLEASE CHECK WWW.MOLEX.COM FOR LATEST PART INFORMATION

Part Number: [0906351143](#)
Status: **Active**
Overview: [qf50](#)
Description: 1.27mm (.050") Pitch QF-50™, Single Beam, Vertical MIL/DIN Version, 0.38µm (15µ") Gold (Au), 14 Circuits

Documents:

[3D Model](#) [Product Specification PS-99020-0015 \(PDF\)](#)
[Drawing \(PDF\)](#) [RoHS Certificate of Compliance \(PDF\)](#)

Agency Certification

CSA LR19980
 UL E29179

General

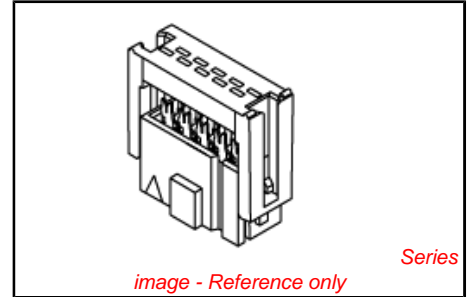
Product Family Ribbon Cable / Wire Trap Connectors
 Series [90635](#)
 Comments Preloaded Upper Housing
 Component Type Housing
 Glow-Wire Compliant No
 Overview [qf50](#)
 Product Name QF-50™

Physical

Circuits (Loaded) 14
 Color - Resin Black
 Durability (mating cycles max) 300
 Entry Angle 90° Angle
 Flammability 94V-0
 Lock to Mating Part None
 Material - Metal Phosphor Bronze
 Material - Plating Mating Gold
 Material - Plating Termination Tin
 Material - Resin Polyester
 Number of Rows 2
 PCB Retention None
 Packaging Type Tray
 Pitch - Mating Interface (in) 0.050 In
 Pitch - Mating Interface (mm) 1.27 mm
 Plating min: Mating (µin) 15.2
 Plating min: Mating (µm) 0.38
 Plating min: Termination (µin) 39
 Plating min: Termination (µm) 1
 Polarized to Mating Part Yes
 Shrouded Fully
 Stackable No
 Surface Mount Compatible (SMC) N/A
 Temperature Range - Operating -25°C to +85°C
 Termination Interface: Style IDT or Pierce
 Wire Insulation Diameter 1.14mm (.045") max.
 Wire Size AWG 26, 28
 Wire/Cable Type Ribbon Cable

Electrical

Current - Maximum per Contact 1A
 Voltage - Maximum 250V AC/DC



EU RoHS

ELV and RoHS Compliant
REACH SVHC Contains SVHC: No
Halogen-Free Status Not Reviewed

China RoHS



Need more information on product environmental compliance?

Email productcompliance@molex.com
 For a multiple part number RoHS Certificate of Compliance, [click here](#)

Please visit the [Contact Us](#) section for any non-product compliance questions.

Search Parts in this Series
[90635Series](#)

Mates With
[90663](#)

Use With
[90170](#)

Application Tooling | FAQ

Tooling specifications and manuals are found by selecting the products below. Crimp Height Specifications are then contained in the Application Tooling Specification document.

Global

Description	Product #
Semi-Automatic Bench Press PB15 C/W Cable Sensor for 90635 Connectors	0691271150
Changehead for Parallel	0690080250

Material Info

Reference - Drawing Numbers

Product Specification
Sales Drawing

PS-99020-0015
SDA-90635

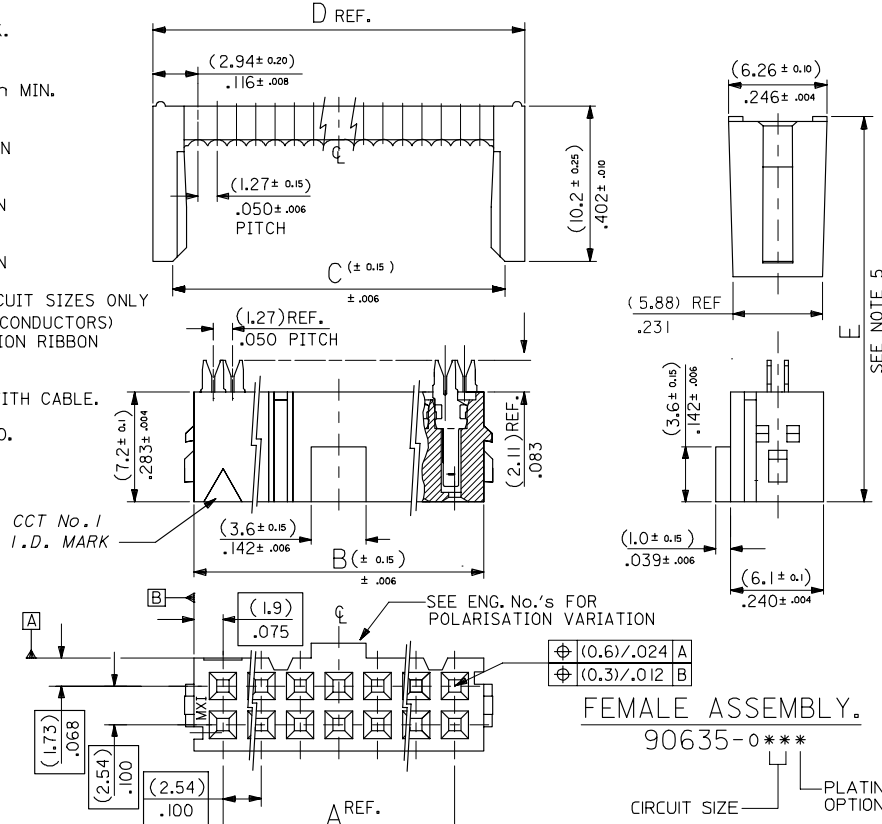
Action Handtool
69008-0949, for
QF-50™ and
MX-50™ Connectors
Arbor Press Fixture 0690200680

This document was generated on 05/31/2010

PLEASE CHECK WWW.MOLEX.COM FOR LATEST PART INFORMATION

10 9 8 7 6 5 4 3 2 1

- NOTES: 1. MATERIAL:
HOUSING: POLYESTER, G.F. (UL 94V-0), COLOUR - BLACK.
TERMINAL: PHOSPHOR BRONZE.
2. TERMINAL PLATING:
90635-***1: CONTACT AREA: GOLD FLASH (0.1um)/ 4um MIN.
I.D. AREA: TIN (1um)/ 39um MIN. OVER
NICKEL (1um)/ 39um MIN.
90635-***2: CONTACT AREA: GOLD (0.76um)/ 30um MIN
I.D. AREA: TIN (1um)/ 39um MIN. OVER
NICKEL (1um)/ 39um MIN.
90635-***3: CONTACT AREA: GOLD (0.38um)/ 15um MIN
I.D. AREA: TIN (1um)/ 39um MIN. OVER
NICKEL (1um)/ 39um MIN.
90635-***4: CONTACT AREA: GOLD (0.51um)/ 20um MIN
I.D. AREA: TIN (1um)/ 39um MIN. OVER
NICKEL (1um)/ 39um MIN.. 20 & 50 CIRCUIT SIZES ONLY
3. FOR USE WITH No. 26 & 28 AWG STRANDED WIRE (7 CONDUCTORS)
AND No. 28 SOLID WIRE 1.14/(.045) DIA. MAX. INSULATION RIBBON
CABLE WITH 1.27/(.050) CENTERS.
4. MATING STRAIN RELIEF: MOLEX No. 90170.
5. DIMENSION *E* IS TOTAL HEIGHT AFTER ASSEMBLED WITH CABLE.
E = 10.5/(.413) REF. WITHOUT STRAIN RELIEF.
E = (15.2)/.598 MAX. WITH STRAIN RELIEF No. 90170.
(14.5)/.571 REF. WHEN COMPRESSED .
6. FOR PRODUCT SPECIFICATION, SEE PS 99020-0015.

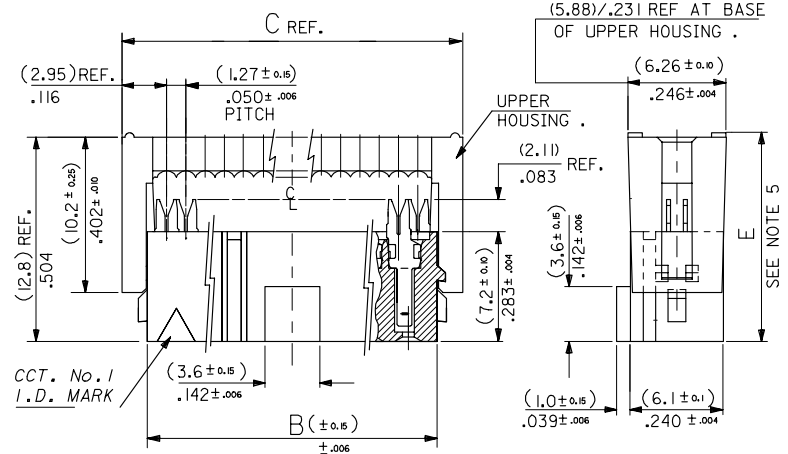


64	90635-#64*	(78.74) 3.100	(82.54) 3.250	(83.31) 3.280	(85.88) 3.381
60	90635-#60*	(73.66) 2.900	(77.46) 3.050	(78.23) 3.080	(80.80) 3.181
50	90635-#50*	(60.96) 2.400	(64.76) 2.55	(65.53) 2.580	(68.10) 2.681
40	90635-#40*	(48.26) 1.900	(52.06) 2.050	(52.83) 2.080	(55.40) 2.181
34	90635-#34*	(40.64) 1.600	(44.44) 1.750	(45.21) 1.780	(47.78) 1.881
30	90635-#30*	(35.56) 1.400	(39.36) 1.550	(40.13) 1.580	(42.70) 1.681
26	90635-#26*	(30.48) 1.200	(34.28) 1.350	(35.05) 1.380	(37.62) 1.481
24	90635-#24*	(27.94) 1.100	(31.74) 1.250	(32.51) 1.280	(35.08) 1.381
20	90635-#20*	(22.86) .900	(26.66) 1.050	(27.43) 1.080	(30.00) 1.181
16	90635-#16*	(17.78) .700	(21.58) .850	(22.35) .880	(24.92) .981
14	90635-#14*	(15.24) .600	(19.04) .750	(19.81) .780	(22.38) .881
10	90635-#10*	(10.16) .400	(13.96) .550	(14.73) .580	(17.30) .681
No. of Ckt.	ENG. NO.	A	B	C	D REF.

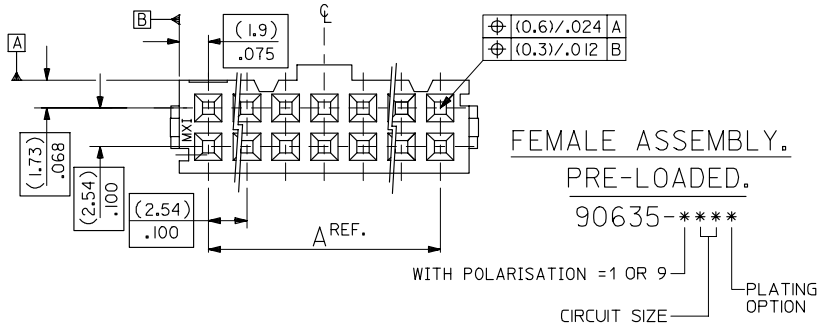
REMOVED FOR POLARISATION EC NO. E2007-0495 DRAWN BY: CHIKO CHKD: APPR: EDMAHONY 2006/12/06 2006/12/07 2006/12/07	QUALITY SYMBOLS ▽=0 ▽=0	GENERAL TOLERANCES (UNLESS SPECIFIED) 4 PLACES ± .005 3 PLACES ± .004 2 PLACES ± .003 1 PLACE ± .002 ANGULAR ± .005	DIMENSION STYLE MM/IN	SCALE 4:1	DESIGN UNITS METRIC	THIRD ANGLE PROJECTION
	DRAWN BY: POB DATE: 1990/09/25 CHECKED BY: JDENNEHY DATE: 2005/08/10 APPROVED BY: JDENNEHY DATE: 2005/08/10	TITLE QIK FLECS SINGLE BEAM FEMALE ASSEMBLY	MATERIAL NO.	DOCUMENT NO. SDA-90635	SHEET NO. 1 OF 3	Molex INCORPORATED
DRAFT WHERE APPLICABLE MUST REMAIN WITHIN DIMENSIONS		SEE CHART	THIS DRAWING CONTAINS INFORMATION THAT IS PROPRIETARY TO MOLEX INCORPORATED AND SHOULD NOT BE USED WITHOUT WRITTEN PERMISSION			

9 8 7 6 5 4 3 2 1

- NOTES: 1. MATERIAL:
HOUSING: POLYESTER, G.F. (UL 94V-0), COLOUR - BLACK.
TERMINAL: PHOSPHOR BRONZE.
2. TERMINAL PLATING:
90635-****1 : CONTACT AREA: GOLD FLASH (0.1um)/ 4uIn MIN.
I.D. AREA: TIN (1um)/ 39uIn MIN. OVER
NICKEL (1um)/ 39uIn MIN.
90635-****2 : CONTACT AREA: GOLD (0.76um)/ 30uIn MIN
I.D. AREA: TIN (1um)/ 39uIn MIN. OVER
NICKEL (1um)/ 39uIn MIN.
90635-****3 : CONTACT AREA: GOLD (0.38um)/ 15uIn MIN
I.D. AREA: TIN (1um)/ 39uIn MIN. OVER
NICKEL (1um)/ 39uIn MIN.
90635-****4 : CONTACT AREA: GOLD (0.51um)/ 20uIn MIN
I.D. AREA: TIN (1um)/ 39uIn MIN. OVER
NICKEL (1um)/ 39uIn MIN.
3. FOR USE WITH No. 26 & 28 AWG STRANDED WIRE (7 CONDUCTORS)
AND No. 28 SOLID WIRE 1/4(.045) DIA. MAX. INSULATION RIBBON
CABLE WITH 1.27(.050) CENTERS.
4. MATING STRAIN RELIEF: MOLEX No. 90170.
5. DIMENSION 'E' IS TOTAL HEIGHT AFTER ASSEMBLED WITH CABLE.
E = 10.5(.413) REF. WITHOUT STRAIN RELIEF.
E = (15.2)/.598 MAX. WITH STRAIN RELIEF No. 90170.
(14.5)/.571 REF. WHEN COMPRESSED .
6. FOR PRODUCT SPECIFICATION, SEE PS 99020-0015.



64	90635-#64*	(78.74) 3.100	(82.54) 3.250	(85.88) 3.381
60	90635-#60*	(73.66) 2.900	(77.46) 3.050	(80.80) 3.181
50	90635-#50*	(60.96) 2.400	(64.76) 2.55	(68.10) 2.681
40	90635-#40*	(48.26) 1.900	(52.06) 2.050	(55.40) 2.181
	90635-9402 (CUSTOMER SPECIFIC)			
34	90635-#34*	(40.64) 1.600	(44.44) 1.750	(47.78) 1.881
30	90635-#30*	(35.56) 1.400	(39.36) 1.550	(42.70) 1.681
26	90635-#26*	(30.48) 1.200	(34.28) 1.350	(37.62) 1.481
24	90635-#24*	(27.94) 1.100	(31.74) 1.250	(35.08) 1.381
20	90635-#20*	(22.86) .900	(26.66) 1.050	(30.00) 1.181
16	90635-#16*	(17.78) .700	(21.58) .850	(24.92) .981
14	90635-#14*	(15.24) .600	(19.04) .750	(22.38) .881
10	90635-#10*	(10.16) .400	(13.96) .550	(17.30) .681
NO. OF EXT.	ENG. NO.	A	B	C



FEMALE ASSEMBLY.
PRE-LOADED.
90635-****

REMOVED OPTION EC NO. E2007-0495 DRAWN BY: JRN CHKD: CHIKO APPR: EDMAHONY	QUALITY SYMBOLS	GENERAL TOLERANCES (UNLESS SPECIFIED)	DIMENSION STYLE MM/IN	SCALE 4:1	DESIGN UNITS METRIC	THIRD ANGLE PROJECTION
	▽=0	4 PLACES ± --- ± ---	DRAWN BY POB	DATE 1990/09/25	TITLE	QIK FLECS SINGLE BEAM FEMALE ASSEMBLY, PRE-LOADED
	▽=0	3 PLACES ± --- ± ---	CHECKED BY JDENNEHY	DATE 2005/08/10	MATERIAL NO.	MOLEX INCORPORATED
		2 PLACES ± --- ± ---	APPROVED BY JDENNEHY	DATE 2005/08/10	DOCUMENT NO.	SDA-90635
	1 PLACE ± --- ± ---	ANGULAR ± ---°	SEE CHART	THIS DRAWING CONTAINS INFORMATION THAT IS PROPRIETARY TO MOLEX INCORPORATED AND SHOULD NOT BE USED WITHOUT WRITTEN PERMISSION		
		DRAFT WHERE APPLICABLE MUST REMAIN WITHIN DIMENSIONS	SIZE A3	SHEET NO. 2 OF 3		