

PLEASE CHECK WWW.MOLEX.COM FOR LATEST PART INFORMATION

Part Number: **0906351102**
Status: **Active**
Overview: qf50
Description: 1.27mm (.050") Pitch QF-50™, Single Beam, Vertical MIL/DIN Version, 0.76µm (30µ") Gold (Au), 10 Circuits

Documents:

3D Model [Product Specification PS-99020-0015 \(PDF\)](#)
Drawing (PDF) [RoHS Certificate of Compliance \(PDF\)](#)

Agency Certification

CSA LR19980
UL E29179

General

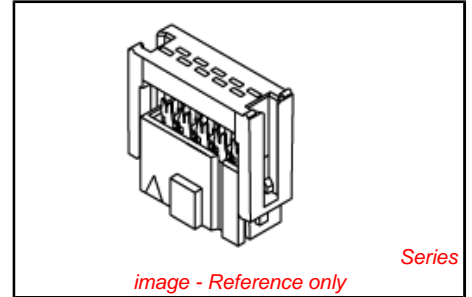
Product Family Ribbon Cable / Wire Trap Connectors
Series 90635
Comments Preloaded Upper Housing
Component Type Housing
Glow-Wire Compliant No
Overview qf50
Product Name QF-50™

Physical

Circuits (Loaded) 10
Color - Resin Black
Durability (mating cycles max) 300
Entry Angle 90° Angle
Flammability 94V-0
Lock to Mating Part None
Material - Metal Phosphor Bronze
Material - Plating Mating Gold
Material - Plating Termination Tin
Material - Resin Polyester
Number of Rows 2
PCB Retention None
Packaging Type Tray
Pitch - Mating Interface (in) 0.050 In
Pitch - Mating Interface (mm) 1.27 mm
Plating min: Mating (µin) 30.4
Plating min: Mating (µm) 0.76
Plating min: Termination (µin) 39
Plating min: Termination (µm) 1
Polarized to Mating Part Yes
Shrouded Fully
Stackable No
Surface Mount Compatible (SMC) N/A
Temperature Range - Operating -25°C to +85°C
Termination Interface: Style IDT or Pierce
Wire Insulation Diameter 1.14mm (.045") max.
Wire Size AWG 26, 28
Wire/Cable Type Ribbon Cable

Electrical

Current - Maximum per Contact 1A
Voltage - Maximum 250V AC/DC



EU RoHS

ELV and RoHS Compliant
REACH SVHC Contains SVHC: No
Halogen-Free Status
Not Halogen-Free

China RoHS



Need more information on product environmental compliance?

Email productcompliance@molex.com
For a multiple part number RoHS Certificate of Compliance, [click here](#)

Please visit the [Contact Us](#) section for any non-product compliance questions.

Search Parts in this Series

90635Series

Mates With

90663

Use With

90170

Application Tooling | FAQ

Tooling specifications and manuals are found by selecting the products below. Crimp Height Specifications are then contained in the Application Tooling Specification document.

Global

Description	Product #
Semi-Automatic Bench Press	0691271150
PB15 C/W Cable Sensor for 90635 Connectors	
Changehead for Parallel	0690080250

Material Info

Reference - Drawing Numbers

Product Specification
Sales Drawing

PS-99020-0015
SDA-90635

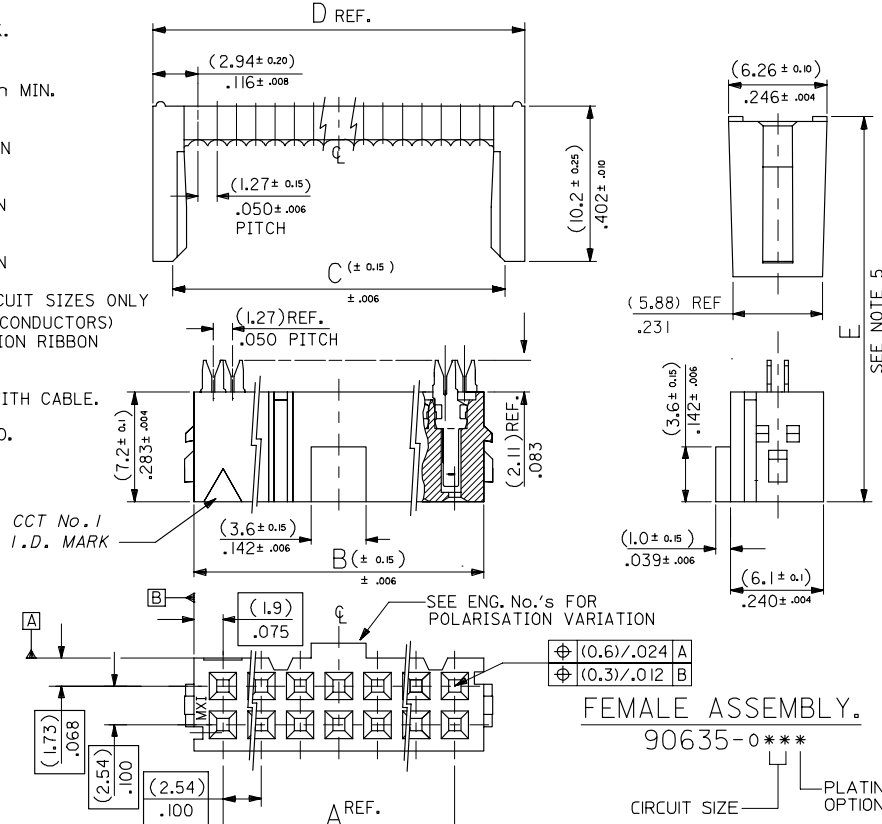
Action Handtool
69008-0949, for
QF-50™ and
MX-50™ Connectors
Arbor Press Fixture 0690200680

This document was generated on 05/31/2010

PLEASE CHECK WWW.MOLEX.COM FOR LATEST PART INFORMATION

10 9 8 7 6 5 4 3 2 1

- NOTES: 1. MATERIAL:
HOUSING: POLYESTER, G.F. (UL 94V-0), COLOUR - BLACK.
TERMINAL: PHOSPHOR BRONZE.
2. TERMINAL PLATING:
90635-***1: CONTACT AREA: GOLD FLASH (0.1um)/ 4um MIN.
I.D. AREA: TIN (1um)/ 39um MIN. OVER
NICKEL (1um)/ 39um MIN.
90635-***2: CONTACT AREA: GOLD (0.76um)/ 30um MIN
I.D. AREA: TIN (1um)/ 39um MIN. OVER
NICKEL (1um)/ 39um MIN.
90635-***3: CONTACT AREA: GOLD (0.38um)/ 15um MIN
I.D. AREA: TIN (1um)/ 39um MIN. OVER
NICKEL (1um)/ 39um MIN.
90635-***4: CONTACT AREA: GOLD (0.51um)/ 20um MIN
I.D. AREA: TIN (1um)/ 39um MIN. OVER
NICKEL (1um)/ 39um MIN.. 20 & 50 CIRCUIT SIZES ONLY
3. FOR USE WITH No. 26 & 28 AWG STRANDED WIRE (7 CONDUCTORS)
AND No. 28 SOLID WIRE 1.14/(.045) DIA. MAX. INSULATION RIBBON
CABLE WITH 1.27/(.050) CENTERS.
4. MATING STRAIN RELIEF: MOLEX No. 90170.
5. DIMENSION *E* IS TOTAL HEIGHT AFTER ASSEMBLED WITH CABLE.
E = 10.5/(.413) REF. WITHOUT STRAIN RELIEF.
E = (15.2)/.598 MAX. WITH STRAIN RELIEF No. 90170.
(14.5)/.571 REF. WHEN COMPRESSED .
6. FOR PRODUCT SPECIFICATION, SEE PS 99020-0015.



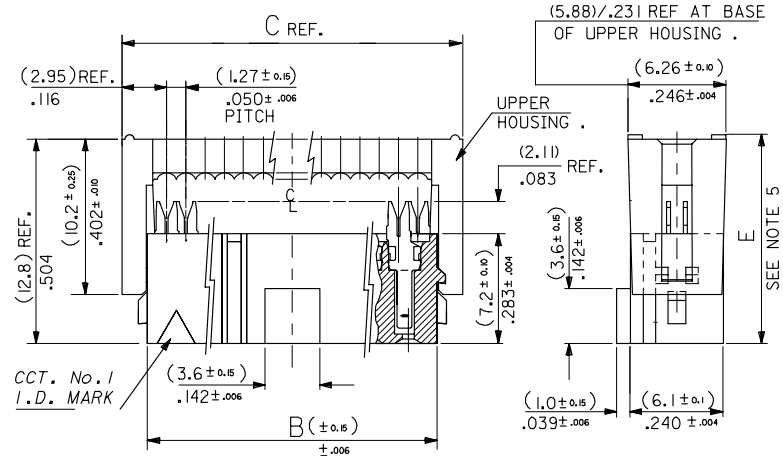
FEMALE ASSEMBLY.
90635-0***

CIRCUIT SIZE PLATING OPTION
(DOES NOT APPLY TO VOIDED OPTIONS)

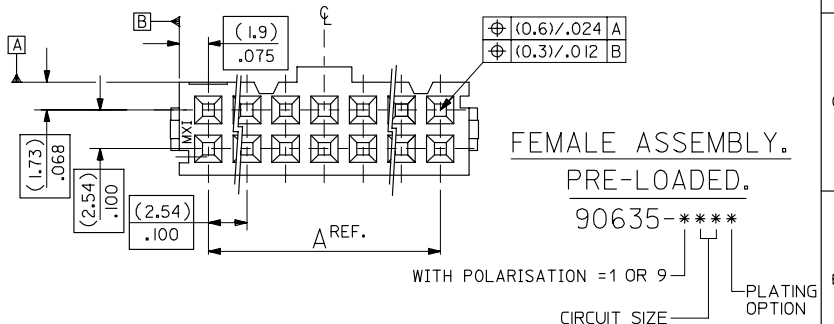
64	90635-#64*	(78.74) 3.100	(82.54) 3.250	(83.31) 3.280	(85.88) 3.381
60	90635-#60*	(73.66) 2.900	(77.46) 3.050	(78.23) 3.080	(80.80) 3.181
50	90635-#50*	(60.96) 2.400	(64.76) 2.55	(65.53) 2.580	(68.10) 2.681
40	90635-#40*	(48.26) 1.900	(52.06) 2.050	(52.83) 2.080	(55.40) 2.181
34	90635-#34*	(40.64) 1.600	(44.44) 1.750	(45.21) 1.780	(47.78) 1.881
30	90635-#30*	(35.56) 1.400	(39.36) 1.550	(40.13) 1.580	(42.70) 1.681
26	90635-#26*	(30.48) 1.200	(34.28) 1.350	(35.05) 1.380	(37.62) 1.481
24	90635-#24*	(27.94) 1.100	(31.74) 1.250	(32.51) 1.280	(35.08) 1.381
20	90635-#20*	(22.86) .900	(26.66) 1.050	(27.43) 1.080	(30.00) 1.181
16	90635-#16*	(17.78) .700	(21.58) .850	(22.35) .880	(24.92) .981
14	90635-#14*	(15.24) .600	(19.04) .750	(19.81) .780	(22.38) .881
10	90635-#10*	(10.16) .400	(13.96) .550	(14.73) .580	(17.30) .681
No. of Ckt.	ENG. NO.	A	B	C	D REF.

REVISED FOR POLARISATION EC NO. E2007-0495 DRAWN BY: CHIKO 2006/12/07 APPR: EDMAHONY 2006/12/07 DESCRIPTION	QUALITY SYMBOLS	GENERAL TOLERANCES (UNLESS SPECIFIED)	DIMENSION STYLE	SCALE	DESIGN UNITS	THIRD ANGLE PROJECTION
	▽=0	mm INCH	MM/IN	4:1	METRIC	
	▽=0	4 PLACES ± --- ± ---	DRAWN BY	DATE	TITLE	
		3 PLACES ± --- ± ---	POB	1990/09/25	QIK FLECS SINGLE BEAM FEMALE ASSEMBLY	
	2 PLACES ± --- ± ---	CHECKED BY	DATE			
	1 PLACE ± --- ± ---	JDENNEHY	2005/08/10			
	ANGULAR ± --- °	APPROVED BY	DATE			
		JDENNEHY	2005/08/10			
	DRAFT WHERE APPLICABLE MUST REMAIN WITHIN DIMENSIONS	SEE CHART	MATERIAL NO.	DOCUMENT NO.	SHEET NO.	
				SDA-90635	1 OF 3	
				Molex INCORPORATED		
			THIS DRAWING CONTAINS INFORMATION THAT IS PROPRIETARY TO MOLEX INCORPORATED AND SHOULD NOT BE USED WITHOUT WRITTEN PERMISSION			

- NOTES: 1. MATERIAL:
HOUSING: POLYESTER, G.F. (UL 94V-0), COLOUR - BLACK.
TERMINAL: PHOSPHOR BRONZE.
2. TERMINAL PLATING:
90635-****1 : CONTACT AREA: GOLD FLASH (0.1um)/ 4uIn MIN.
I.D. AREA: TIN (1um)/ 39uIn MIN. OVER
NICKEL (1um)/ 39uIn MIN.
90635-****2 : CONTACT AREA: GOLD (0.76um)/ 30uIn MIN
I.D. AREA: TIN (1um)/ 39uIn MIN. OVER
NICKEL (1um)/ 39uIn MIN.
90635-****3 : CONTACT AREA: GOLD (0.38um)/ 15uIn MIN
I.D. AREA: TIN (1um)/ 39uIn MIN. OVER
NICKEL (1um)/ 39uIn MIN.
90635-****4 : CONTACT AREA: GOLD (0.51um)/ 20uIn MIN
I.D. AREA: TIN (1um)/ 39uIn MIN. OVER
NICKEL (1um)/ 39uIn MIN.
3. FOR USE WITH No. 26 & 28 AWG STRANDED WIRE (7 CONDUCTORS)
AND No. 28 SOLID WIRE 1/4/(.045) DIA. MAX. INSULATION RIBBON
CABLE WITH 1.27/(.050) CENTERS.
4. MATING STRAIN RELIEF: MOLEX No. 90170.
5. DIMENSION 'E' IS TOTAL HEIGHT AFTER ASSEMBLED WITH CABLE.
E = 10.5/(.413) REF. WITHOUT STRAIN RELIEF.
E = (15.2)/.598 MAX. WITH STRAIN RELIEF No. 90170.
(14.5)/.571 REF. WHEN COMPRESSED .
6. FOR PRODUCT SPECIFICATION, SEE PS 99020-0015.



64	90635-#64*	(78.74) 3.100	(82.54) 3.250	(85.88) 3.381
60	90635-#60*	(73.66) 2.900	(77.46) 3.050	(80.80) 3.181
50	90635-#50*	(60.96) 2.400	(64.76) 2.55	(68.10) 2.681
40	90635-#40*	(48.26) 1.900	(52.06) 2.050	(55.40) 2.181
	90635-9402 (CUSTOMER SPECIFIC)			
34	90635-#34*	(40.64) 1.600	(44.44) 1.750	(47.78) 1.881
30	90635-#30*	(35.56) 1.400	(39.36) 1.550	(42.70) 1.681
26	90635-#26*	(30.48) 1.200	(34.28) 1.350	(37.62) 1.481
24	90635-#24*	(27.94) 1.100	(31.74) 1.250	(35.08) 1.381
20	90635-#20*	(22.86) .900	(26.66) 1.050	(30.00) 1.181
16	90635-#16*	(17.78) .700	(21.58) .850	(24.92) .981
14	90635-#14*	(15.24) .600	(19.04) .750	(22.38) .881
10	90635-#10*	(10.16) .400	(13.96) .550	(17.30) .681
NO. OF EXT.	ENG. NO.	A	B	C



FEMALE ASSEMBLY.
PRE-LOADED.
90635-****

REMOVED OPTION EC NO. E2007-0495 DRAWN BY: JRN CHKD: CHIKO APPROVED: ED MURPHY	QUALITY SYMBOLS	GENERAL TOLERANCES (UNLESS SPECIFIED)	DIMENSION STYLE MM/IN	SCALE 4:1	DESIGN UNITS METRIC	THIRD ANGLE PROJECTION	
	▽=0	4 PLACES ± --- ± ---	DRAWN BY POB	DATE 1990/09/25	TITLE QIK FLECS SINGLE BEAM FEMALE ASSEMBLY, PRE-LOADED		
	▽=0	3 PLACES ± --- ± ---	CHECKED BY JDENNEHY	DATE 2005/08/10	MATERIAL NO. MOLEX	DOCUMENT NO. SDA-90635	
		2 PLACES ± --- ± ---	APPROVED BY JDENNEHY	DATE 2005/08/10	SIZE A3	SHEET NO. 2 OF 3	
	1 PLACE ± --- ± ---	ANGULAR ± --- °	DRAFT WHERE APPLICABLE MUST REMAIN WITHIN DIMENSIONS				THIS DRAWING CONTAINS INFORMATION THAT IS PROPRIETARY TO MOLEX INCORPORATED AND SHOULD NOT BE USED WITHOUT WRITTEN PERMISSION