

**PLEASE CHECK WWW.MOLEX.COM FOR LATEST PART INFORMATION**

**Part Number:** [0901600120](#)  
**Status:** **Active**  
**Overview:** [cgrid\\_iii](#)  
**Description:** 2.54mm (.100") Pitch C-Grid III™ Crimp Housing - Dual Row, 20 Circuits

**Documents:**

[3D Model](#) [RoHS Certificate of Compliance \(PDF\)](#)  
[Drawing \(PDF\)](#)

**General**

Product Family	Crimp Housings
Series	<a href="#">90160</a>
Overview	<a href="#">cgrid_iii</a>
Product Name	C-Grid III™

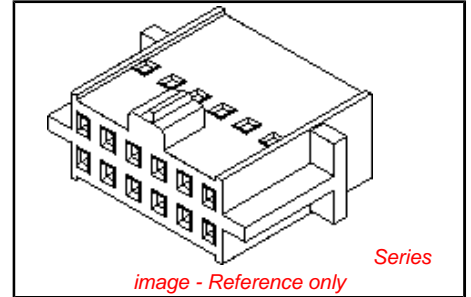
**Physical**

Breakaway	No
Circuits (maximum)	20
Color - Resin	Black
Gender	Female
Glow-Wire Compliant	No
Material - Resin	PPO
Number of Rows	2
Packaging Type	Bag
Panel Mount	No
Pitch - Mating Interface (in)	0.100 In
Pitch - Mating Interface (mm)	2.54 mm
Temperature Range - Operating	-55°C to +105°C

**Material Info**

**Reference - Drawing Numbers**

Sales Drawing	SD-90160
---------------	----------



**EU RoHS**  
**ELV and RoHS**  
**Compliant**  
**REACH SVHC**  
 Not Reviewed  
**Halogen-Free**  
**Status**  
**Not Reviewed**

**China RoHS**



**Need more information on product environmental compliance?**

Email [productcompliance@molex.com](mailto:productcompliance@molex.com)  
 For a multiple part number RoHS Certificate of Compliance, [click here](#)

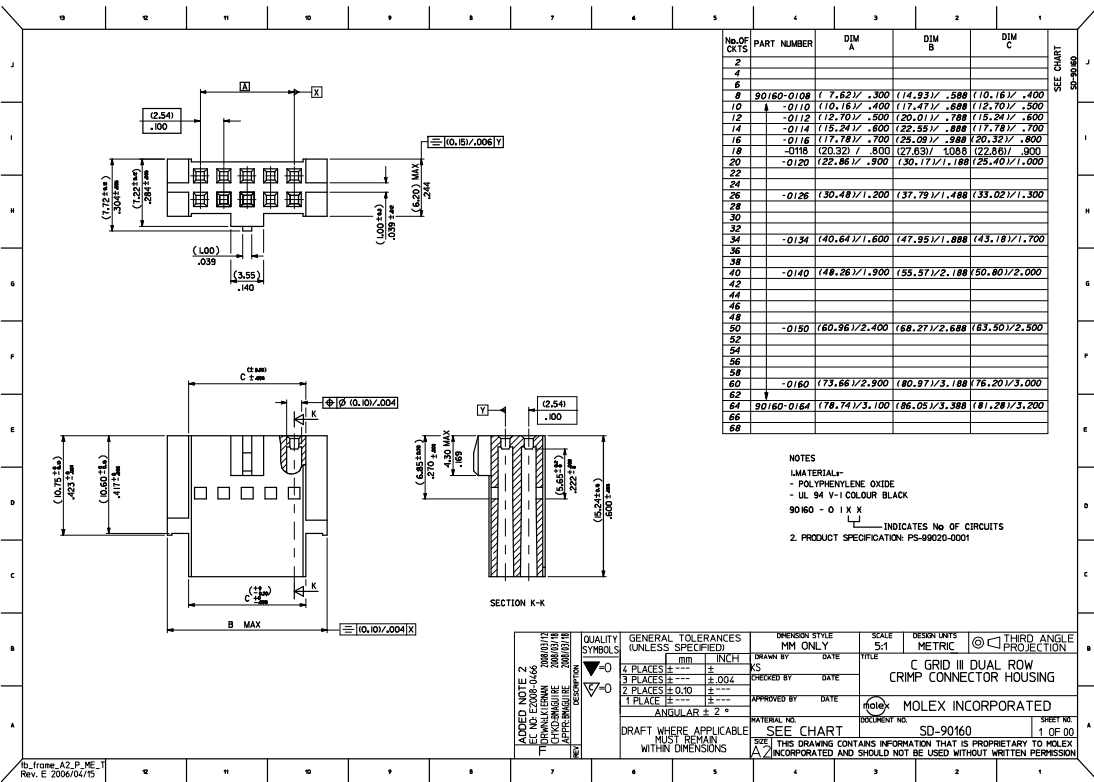
Please visit the [Contact Us](#) section for any non-product compliance questions.

**Search Parts in this Series**  
[90160Series](#)

**Mates With**  
[90663](#) , [90635](#)

**Use With**  
[90119](#)

**PLEASE CHECK WWW.MOLEX.COM FOR LATEST PART INFORMATION**



NOTES  
 1. MATERIAL:-  
 - POLYPHENYLENE OXIDE  
 - UL 94 V-1 COLOUR BLACK  
 SD160 - 0 1 X X  
 L INDICATES No. OF CIRCUITS  
 2. PRODUCT SPECIFICATION: PS-99020-0001

QUALITY SYMBOLS V=0 V=0	GENERAL TOLERANCES (UNLESS SPECIFIED) mm INCH 1 PLACES ± .12 2 PLACES ± 0.10 3 PLACES ± .004 4 PLACES ± .004 ANGULAR ± 2°	DIMENSION STYLE MM ONLY KS CHECKED BY DATE APPROVED BY DATE	SCALE 5:1 DESIGN UNITS METRIC THIRD ANGLE PROJECTION
	DRAFT WHERE APPLICABLE MUST REMAIN WITHIN DIMENSIONS	MATERIAL NO. SEE CHART	DOCUMENT NO. SD-90160

SMT. 1 OF		MRI-SD-90160			
MODIFICATION RECORD INDEX					
ERO	ECO	ISS. DATE	INIT. SHOTS AFFECTED	DESCRIPTION OF MOD.	
599	I	22.6.83	MRS	X - RELEASE	
651		28.7.83	MRS	REVISION	
686	A	6.9.83	MD	TOOL RELEASE	
877	B	3.4.87	KS	REVISION	
977	C	21.0.87	KS	DRAWN ON CAD	
E2012	D	14.02.92	TC	REMOVAL OF WINDOWS	
ECO	ISS. DATE	INIT.	SHOTS AFFECTED	DESCRIPTION OF MOD.	
E30146	E	03.02.22	BGB	I	OMITTED RETOOL MODS
MOLEX EUROPE		REVISE ONLY ON CAD SYSTEM			
DRAWN BY		DESIGN FILE NAME		DATE	
		SD90160X1.DGN		E	

LEVEL CHART

1	17	33	49
2	18	34	50
3	19	35	51 LEVEL INDEX
4	20 DATASHEET	36	52 RESERVED
5 CENTRE LINE	21	37	53 RESERVED
6	22	38	54 RESERVED
7	23	39	55 DIMENSIONS
8	24	40	56 TABLES/CHARTS
9	25	41	57 REVISION TEXT & MR
10	26	42	58 NOTES/TEXT
11 GEOMETRY	27	43	59
12	28	44	60 RESERVED
13	29	45	61
14	30	46	62
15 HATCH	31	47	63
16	32	48	