

PLEASE CHECK WWW.MOLEX.COM FOR LATEST PART INFORMATION

Part Number: [0901190122](#)
Status: **Active**
Overview: [cgrid_iii](#)
Description: C-Grid III™ Crimp Terminal, 26-28 AWG, Reel, 0.76µm (30µ") Selective Gold (Au)

Documents:

[3D Model](#) [RoHS Certificate of Compliance \(PDF\)](#)
[Drawing \(PDF\)](#)

General

Product Family	Crimp Terminals
Series	90119
Comments	Left-hand feed
Crimp Quality Equipment	Yes
Overview	cgrid_iii
Product Name	C-Grid III™

Physical

Gender	Female
Material - Metal	Phosphor Bronze
Material - Plating Mating	Gold
Material - Plating Termination	Tin
Packaging Type	Reel
Plating min: Mating (µin)	30.4
Plating min: Mating (µm)	0.76
Plating min: Termination (µin)	120
Plating min: Termination (µm)	3
Termination Interface: Style	Crimp or Compression
Wire Insulation Diameter	0.76-1.22mm (.030-.048")
Wire Size AWG	26, 28
Wire Size mm²	N/A

Material Info

Reference - Drawing Numbers

Sales Drawing [SD-90119](#)

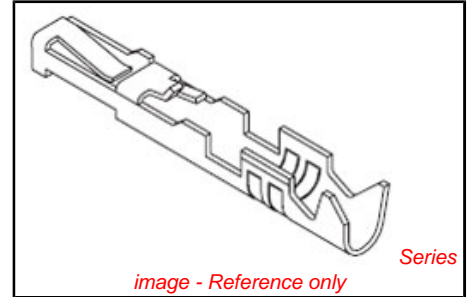


image - Reference only

EU RoHS

ELV and RoHS Compliant
REACH SVHC Contains SVHC: No
Halogen-Free Status
Halogen-Free

China RoHS



Need more information on product environmental compliance?

Email productcompliance@molex.com
 For a multiple part number RoHS Certificate of Compliance, [click here](#)

Please visit the [Contact Us](#) section for any non-product compliance questions.

Search Parts in this Series

[90119Series](#)

Use With

C-Grid III™ Modular Crimp Housing [90156](#) , [90123](#) , [90142](#) , [90143](#) , [90160](#)

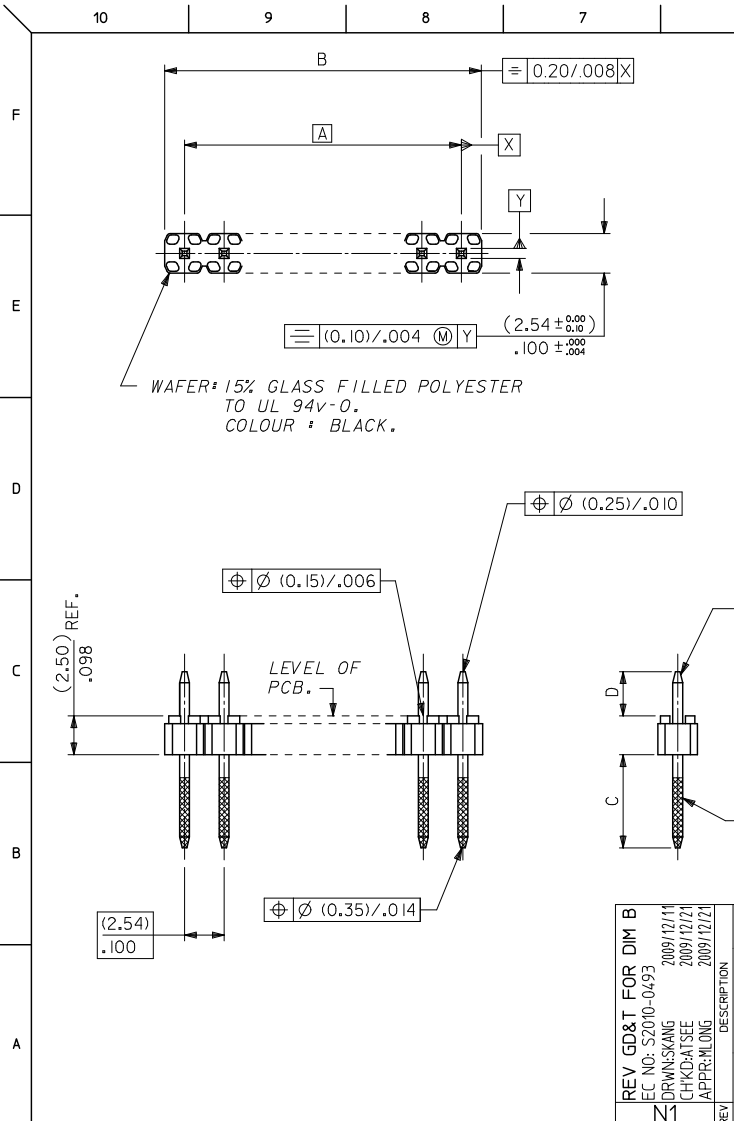
Application Tooling | FAQ

Tooling specifications and manuals are found by selecting the products below. Crimp Height Specifications are then contained in the Application Tooling Specification document.

Global

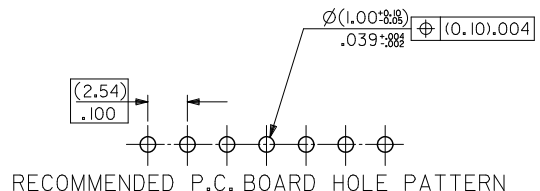
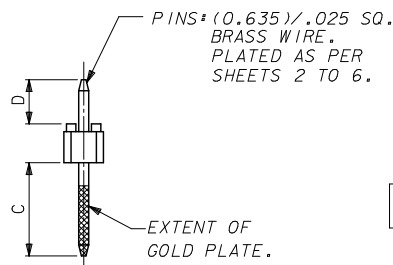
Description	Product #
C-Grid Insertion Tool	0690080140
Extraction Aid	0690080003
Hand Crimp Tool	0638190200
T2 Terminator Die	0638514000
FineAdjust™	0638614000
Applicator	

PLEASE CHECK WWW.MOLEX.COM FOR LATEST PART INFORMATION



CKT SIZE	DIM. "A"		DIM. "B" ^(+0.45) _(-0.18)		CKT SIZE	DIM. "A"		DIM. "B" ^(+0.45) _(-0.18)	
1X 1			(2.54)	.100	1X21	(50.80)	2.000	(53.34)	2.100
1X 2	(2.54)	.100	(5.08)	.200	1X22	(53.34)	2.100	(55.88)	2.200
1X 3	(5.08)	.200	(7.62)	.300	1X23	(55.88)	2.200	(58.42)	2.300
1X 4	(7.62)	.300	(10.16)	.400	1X24	(58.42)	2.300	(60.96)	2.400
1X 5	(10.16)	.400	(12.70)	.500	1X25	(60.96)	2.400	(63.50)	2.500
1X 6	(12.70)	.500	(15.24)	.600	1X26	(63.50)	2.500	(66.04)	2.600
1X 7	(15.24)	.600	(17.78)	.700	1X27	(66.04)	2.600	(68.58)	2.700
1X 8	(17.78)	.700	(20.32)	.800	1X28	(68.58)	2.700	(71.12)	2.800
1X 9	(20.32)	.800	(22.86)	.900	1X29	(71.12)	2.800	(73.66)	2.900
1X10	(22.86)	.900	(25.40)	1.000	1X30	(73.66)	2.900	(76.20)	3.000
1X11	(25.40)	1.000	(27.94)	1.100	1X31	(76.20)	3.000	(78.74)	3.100
1X12	(27.94)	1.100	(30.48)	1.200	1X32	(78.74)	3.100	(81.28)	3.200
1X13	(30.48)	1.200	(33.02)	1.300	1X33	(81.28)	3.200	(83.82)	3.300
1X14	(33.02)	1.300	(35.56)	1.400	1X34	(83.82)	3.300	(86.36)	3.400
1X15	(35.56)	1.400	(38.10)	1.500	1X35	(86.36)	3.400	(88.90)	3.500
1X16	(38.10)	1.500	(40.64)	1.600	1X36	(88.90)	3.500	(91.44)	3.600
1X17	(40.64)	1.600	(43.18)	1.700	1X37	(91.44)	3.600	(93.98)	3.700
1X18	(43.18)	1.700	(45.72)	1.800	1X38	(93.98)	3.700	(96.52)	3.800
1X19	(45.72)	1.800	(48.26)	1.900	1X39	(96.52)	3.800	(99.06)	3.900
1X20	(48.26)	1.900	(50.80)	2.000	1X40	(99.06)	3.900	(101.60)	4.000

- NOTES
1. FOR ASSY NUMBERS WITH FINISH OPTIONS AND DIM'S C & D SEE SHEETS 2 TO 6.
 2. PRODUCT SPEC: PS-99020-0001
 3. RECOMMENDED PCB THICKNESS 1.6mm



REV GD&T FOR DIM B EC NO: S2010-0493 DRWNSKANG 2009/12/11 CHKD:ATSEE 2009/12/21 APPR:MLONG 2009/12/21	QUALITY SYMBOLS	GENERAL TOLERANCES (UNLESS SPECIFIED)	DIMENSION STYLE	SCALE	DESIGN UNITS	THIRD ANGLE PROJECTION
	▽=0	mm INCH	MM/IN	NTS	METRIC	
	▽=0	4 PLACES ± --- ± ---	DRAWN BY DATE	TITLE		
	▽=0	3 PLACES ± --- ± ---	JDENNEHY 2006/01/18	C-GRID III SINGLE ROW STRAIGHT PIN HEADER		
	2 PLACES ± --- ± ---	CHECKED BY DATE	MOLEX INCORPORATED			
	1 PLACE ± --- ± ---	DWASZKIEWICZ 2006/01/18	SDA-90120			
	ANGULAR ± --- °	APPROVED BY DATE	SHEET NO.			
		MLONG 2009/12/21	1 OF 6			
	DRAFT WHERE APPLICABLE MUST REMAIN WITHIN DIMENSIONS	MATERIAL NO.	DOCUMENT NO.			
		SEE TABLE	THIS DRAWING CONTAINS INFORMATION THAT IS PROPRIETARY TO MOLEX INCORPORATED AND SHOULD NOT BE USED WITHOUT WRITTEN PERMISSION			

10 9 8 7 6 5 4 3 2 1

CIRCUIT SIZE	PLATING TYPE A		PLATING TYPE E		PLATING TYPE F	
	PART NO.	CUSTOMER SPECIFIC PART NO.	PART NO.	CUSTOMER SPECIFIC PART NO.	PART NO.	CUSTOMER SPECIFIC PART NO.
1 X 1	90120-0121	90120-9121	90120-0761	90120-9761	90120-0921	90120-9921
1 X 2	-0122	-9122	-0762	-9762	-0922	-9922
1 X 3	-0123	-9123	-0763	-9763	-0923	-9923
1 X 4	-0124	-9124	-0764	-9764	-0924	-9924
1 X 5	-0125	-9125	-0765	-9765	-0925	-9925
1 X 6	-0126	-9126	-0766	-9766	-0926	-9926
1 X 7	-0127	-9127	-0767	-9767	-0927	-9927
1 X 8	-0128	-9128	-0768	-9768	-0928	-9928
1 X 9	-0129	-9129	-0769	-9769	-0929	-9929
1 X 10	-0130	-9130	-0770	-9770	-0930	-9930
1 X 11	-0131	-9131	-0771	-9771	-0931	-9931
1 X 12	-0132	-9132	-0772	-9772	-0932	-9932
1 X 13	-0133	-9133	-0773	-9773	-0933	-9933
1 X 14	-0134	-9134	-0774	-9774	-0934	-9934
1 X 15	-0135	-9135	-0775	-9775	-0935	-9935
1 X 16	-0136	-9136	-0776	-9776	-0936	-9936
1 X 17	-0137	-9137	-0777	-9777	-0937	-9937
1 X 18	-0138	-9138	-0778	-9778	-0938	-9938
1 X 19	-0139	-9139	-0779	-9779	-0939	-9939
1 X 20	-0140	-9140	-0780	-9780	-0940	-9940
1 X 21	-0141	-9141	-0781	-9781	-0941	-9941
1 X 22	-0142	-9142	-0782	-9782	-0942	-9942
1 X 23	-0143	-9143	-0783	-9783	-0943	-9943
1 X 24	-0144	-9144	-0784	-9784	-0944	-9944
1 X 25	-0145	-9145	-0785	-9785	-0945	-9945
1 X 26	-0146	-9146	-0786	-9786	-0946	-9946
1 X 27	-0147	-9147	-0787	-9787	-0947	-9947
1 X 28	-0148	-9148	-0788	-9788	-0948	-9948
1 X 29	-0149	-9149	-0789	-9789	-0949	-9949
1 X 30	-0150	-9150	-0790	-9790	-0950	-9950
1 X 31	-0151	-9151	-0791	-9791	-0951	-9951
1 X 32	-0152	-9152	-0792	-9792	-0952	-9952
1 X 33	-0153	-9153	-0793	-9793	-0953	-9953
1 X 34	-0154	-9154	-0794	-9794	-0954	-9954
1 X 35	-0155	-9155	-0795	-9795	-0955	-9955
1 X 36	-0156	-9156	-0796	-9796	-0956	-9956
1 X 37	-0157	-9157	-0797	-9797	-0957	-9957
1 X 38	-0158	-9158	-0798	-9798	-0958	-9958
1 X 39	-0159	-9159	-0799	-9799	-0959	-9959
1 X 40	90120-0160	90120-9160	90120-0800	90120-9800	90120-0960	90120-9960

DIM C (+0.20 / -0.08) (6.75) .266

DIM D (+0.20 / -0.08) (2.90) .114

NOTES:
FOR PLATING VARIATIONS SEE
ENG.STD. SDES-99000-0003.

STANDARD PRODUCTS

REV GD&T FOR DIM B
EC NO: S2010-0493
DR: WSKANG 2009/12/11
CHK: DATSEE 2009/12/21
APP: M LONG 2009/12/21
REV N1

QUALITY SYMBOLS
▽=0
▽=0
▽=0

GENERAL TOLERANCES (UNLESS SPECIFIED)
mm INCH
4 PLACES ± --- ± ---
3 PLACES ± --- ± ---
2 PLACES ± --- ± ---
1 PLACE ± --- ± ---
ANGULAR ± --- °
DRAFT WHERE APPLICABLE
MUST REMAIN WITHIN DIMENSIONS

DIMENSION STYLE MM/IN
DRAWN BY JDENNEHY DATE 2006/01/18
CHECKED BY DWASZKIEWICZ DATE 2006/01/18
APPROVED BY M LONG DATE 2009/12/21
MATERIAL NO. SEE TABLE
SIZE A 3

SCALE NTS
DESIGN UNITS METRIC
THIRD ANGLE PROJECTION
TITLE C-GRID III SINGLE ROW STRAIGHT PIN HEADER
MOLEX INCORPORATED
DOCUMENT NO. SDA-90120
SHEET NO. 2 OF 6
THIS DRAWING CONTAINS INFORMATION THAT IS PROPRIETARY TO MOLEX INCORPORATED AND SHOULD NOT BE USED WITHOUT WRITTEN PERMISSION

tb_frame_A3_P_AM.T Rev. F 2009/06/18 9 8 7 6 5 4 3 2 1

10 9 8 7 6 5 4 3 2 1

CIRCUIT SIZE	PLATING TYPE A PART NO.	PLATING TYPE E PART NO.	PLATING TYPE F PART NO.
I X 1	90120-0041	90120-0681	90120-0841
I X 2	▲ -0042	▲ -0682	▲ -0842
I X 3	-0043	-0683	-0843
I X 4	-0044	-0684	-0844
I X 5	-0045	-0685	-0845
I X 6	-0046	-0686	-0846
I X 7	-0047	-0687	-0847
I X 8	-0048	-0688	-0848
I X 9	-0049	-0689	-0849
I X 10	-0050	-0690	-0850
I X 11	-0051	-0691	-0851
I X 12	-0052	-0692	-0852
I X 13	-0053	-0693	-0853
I X 14	-0054	-0694	-0854
I X 15	-0055	-0695	-0855
I X 16	-0056	-0696	-0856
I X 17	-0057	-0697	-0857
I X 18	-0058	-0698	-0858
I X 19	-0059	-0699	-0859
I X 20	-0060	-0700	-0860
I X 21	-0061	-0701	-0861
I X 22	-0062	-0702	-0862
I X 23	-0063	-0703	-0863
I X 24	-0064	-0704	-0864
I X 25	-0065	-0705	-0865
I X 26	-0066	-0706	-0866
I X 27	-0067	-0707	-0867
I X 28	-0068	-0708	-0868
I X 29	-0069	-0709	-0869
I X 30	-0070	-0710	-0870
I X 31	-0071	-0711	-0871
I X 32	-0072	-0712	-0872
I X 33	-0073	-0713	-0873
I X 34	-0074	-0714	-0874
I X 35	-0075	-0715	-0875
I X 36	-0076	-0716	-0876
I X 37	-0077	-0717	-0877
I X 38	-0078	-0718	-0878
I X 39	▼ -0079	▼ -0719	▼ -0879
I X 40	90120-0080	90120-0720	90120-0880

CIRCUIT SIZE	PLATING TYPE A PART NO.	PLATING TYPE E PART NO.	PLATING TYPE F PART NO.
I X 1	90120-0081	90120-0721	90120-0881
I X 2	▲ -0082	▲ -0722	▲ -0882
I X 3	-0083	-0723	-0883
I X 4	-0084	-0724	-0884
I X 5	-0085	-0725	-0885
I X 6	-0086	-0726	-0886
I X 7	-0087	-0727	-0887
I X 8	-0088	-0728	-0888
I X 9	-0089	-0729	-0889
I X 10	-0090	-0730	-0890
I X 11	-0091	-0731	-0891
I X 12	-0092	-0732	-0892
I X 13	-0093	-0733	-0893
I X 14	-0094	-0734	-0894
I X 15	-0095	-0735	-0895
I X 16	-0096	-0736	-0896
I X 17	-0097	-0737	-0897
I X 18	-0098	-0738	-0898
I X 19	-0099	-0739	-0899
I X 20	-0100	-0740	-0900
I X 21	-0101	-0741	-0901
I X 22	-0102	-0742	-0902
I X 23	-0103	-0743	-0903
I X 24	-0104	-0744	-0904
I X 25	-0105	-0745	-0905
I X 26	-0106	-0746	-0906
I X 27	-0107	-0747	-0907
I X 28	-0108	-0748	-0908
I X 29	-0109	-0749	-0909
I X 30	-0110	-0750	-0910
I X 31	-0111	-0751	-0911
I X 32	-0112	-0752	-0912
I X 33	-0113	-0753	-0913
I X 34	-0114	-0754	-0914
I X 35	-0115	-0755	-0915
I X 36	-0116	-0756	-0916
I X 37	-0117	-0757	-0917
I X 38	-0118	-0758	-0918
I X 39	▼ -0119	▼ -0759	▼ -0919
I X 40	90120-0120	90120-0760	90120-0920

DIM C (+0.20/-0.30) ±.008 (5.75) .226

DIM C (+0.20/-0.30) ±.008 (5.75) .226

DIM D (+0.20/-0.30) ±.008 (2.90) .114

DIM D (+0.20/-0.30) ±.008 (4.50) .177

NOTES:
FOR PLATING VARIATIONS SEE
ENG.STD. SDES-99000-0003.

NON-STANDARD PRODUCTS

REV GD&T FOR DIM B	QUALITY SYMBOLS
EC NO: S2010-0493	▽=0
DRWNSKANG 2009/12/11	▽=0
CHKYATSEE 2009/12/21	▽=0
APPR:MLONG 2009/12/21	
DESCRIPTION	
REV	

GENERAL TOLERANCES (UNLESS SPECIFIED)	
	mm INCH
4 PLACES	±.005 ±.002
3 PLACES	±.005 ±.002
2 PLACES	±.005 ±.002
1 PLACE	±.005 ±.002
ANGULAR ±.005°	
DRAFT WHERE APPLICABLE MUST REMAIN WITHIN DIMENSIONS	

DIMENSION STYLE	
MM/IN	
DRAWN BY	DATE
JDENNEHY	2006/01/18
CHECKED BY	DATE
DWASZKIEWICZ	2006/01/18
APPROVED BY	DATE
MLONG	2009/12/21
MATERIAL NO.	DOCUMENT NO.
SEE TABLE	SDA-90120
SIZE A3	

SCALE	DESIGN UNITS	THIRD ANGLE PROJECTION
NTS	METRIC	
TITLE		
C-GRID III SINGLE ROW STRAIGHT PIN HEADER		
MOLEX INCORPORATED		
SHEET NO.	3 OF 6	

tb_frame_A3_P_AM.T
Rev. F 2009/06/18

9 8 7 6 5 4 3 2 1

10 9 8 7 6 5 4 3 2 1

CIRCUIT SIZE	PLATING TYPE A PART NO.	PLATING TYPE E PART NO.	PLATING TYPE F PART NO.
I X 1	90120-0161	90120-0801	90120-0961
I X 2	↑ -0162	↑ -0802	↑ -0962
I X 3	-0163	-0803	-0963
I X 4	-0164	-0804	-0964
I X 5	-0165	-0805	-0965
I X 6	-0166	-0806	-0966
I X 7	-0167	-0807	-0967
I X 8	-0168	-0808	-0968
I X 9	-0169	-0809	-0969
I X 10	-0170	-0810	-0970
I X 11	-0171	-0811	-0971
I X 12	-0172	-0812	-0972
I X 13	-0173	-0813	-0973
I X 14	-0174	-0814	-0974
I X 15	-0175	-0815	-0975
I X 16	-0176	-0816	-0976
I X 17	-0177	-0817	-0977
I X 18	-0178	-0818	-0978
I X 19	-0179	-0819	-0979
I X 20	-0180	-0820	-0980
I X 21	-0181	-0821	-0981
I X 22	-0182	-0822	-0982
I X 23	-0183	-0823	-0983
I X 24	-0184	-0824	-0984
I X 25	-0185	-0825	-0985
I X 26	-0186	-0826	-0986
I X 27	-0187	-0827	-0987
I X 28	-0188	-0828	-0988
I X 29	-0189	-0829	-0989
I X 30	-0190	-0830	-0990
I X 31	-0191	-0831	-0991
I X 32	-0192	-0832	-0992
I X 33	-0193	-0833	-0993
I X 34	-0194	-0834	-0994
I X 35	-0195	-0835	-0995
I X 36	-0196	-0836	-0996
I X 37	-0197	-0837	-0997
I X 38	-0198	-0838	-0998
I X 39	↓ -0199	↓ -0839	↓ -0999
I X 40	90120-0200	90120-0840	90120-1000

DIM C (±0.20) ±.008 (6.75) .266

DIM D (±0.25) ±.010 (4.50) .177

NOTES:
FOR PLATING VARIATIONS SEE
ENG.STD. SDES-99000-0003.

NON-STANDARD PRODUCTS

REV GD&T FOR DIM B
EC NO: S2010-0493
DRAWN BY: DRWNSKANG
CHKD BY: CHYKATSEE
APPR: MLONG
2009/12/11
2009/12/21
2009/12/21

QUALITY SYMBOLS
▽=0
▽=0
▽=0

GENERAL TOLERANCES (UNLESS SPECIFIED)	
mm	INCH
4 PLACES ±---	±---
3 PLACES ±---	±---
2 PLACES ±---	±---
1 PLACE ±---	±---
ANGULAR ±---°	

DRAFT WHERE APPLICABLE
MUST REMAIN
WITHIN DIMENSIONS

DIMENSION STYLE	
MM/IN	
DRAWN BY	DATE
JDENNEHY	2006/01/18
CHECKED BY	DATE
DWASZKIEWICZ	2006/01/18
APPROVED BY	DATE
MLONG	2009/12/21
MATERIAL NO.	
SEE TABLE	

SCALE	DESIGN UNITS	THIRD ANGLE PROJECTION
NTS	METRIC	
TITLE		
C-GRID III SINGLE ROW STRAIGHT PIN HEADER		
MOLEX INCORPORATED		
DOCUMENT NO.	SHEET NO.	
SDA-90120	4 OF 6	

tb_frame_A3_P_AM.T
Rev. F 2009/06/18

9 8 7 6 5 4 3 2 1

	10	9	8	7	6	5	4	3	2	1	
	CIRCUIT SIZE	PLATING TYPE B PART NO.	PLATING TYPE C PART NO.	PLATING TYPE D PART NO.	PLATING TYPE G PART NO.		CIRCUIT SIZE	PLATING TYPE G PART NO.	PLATING TYPE B PART NO.	PLATING TYPE C PART NO.	PLATING TYPE D PART NO.
	I X 1	90120-0281	90120-0441	90120-0601	90120-1081		I X 1	90120-1001	90120-0201	90120-0361	90120-0521
	I X 2	-0282	-0442	-0602	-1082		I X 2	-1002	-0202	-0362	-0522
	I X 3	-0283	-0443	-0603	-1083		I X 3	-1003	-0203	-0363	-0523
	I X 4	-0284	-0444	-0604	-1084		I X 4	-1004	-0204	-0364	-0524
	I X 5	-0285	-0445	-0605	-1085		I X 5	-1005	-0205	-0365	-0525
	I X 6	-0286	-0446	-0606	-1086		I X 6	-1006	-0206	-0366	-0526
	I X 7	-0287	-0447	-0607	-1087		I X 7	-1007	-0207	-0367	-0527
	I X 8	-0288	-0448	-0608	-1088		I X 8	-1008	-0208	-0368	-0528
	I X 9	-0289	-0449	-0609	-1089		I X 9	-1009	-0209	-0369	-0529
	I X 10	-0290	-0450	-0610	-1090		I X 10	-1010	-0210	-0370	-0530
	I X 11	-0291	-0451	-0611	-1091		I X 11	-1011	-0211	-0371	-0531
	I X 12	-0292	-0452	-0612	-1092		I X 12	-1012	-0212	-0372	-0532
	I X 13	-0293	-0453	-0613	-1093		I X 13	-1013	-0213	-0373	-0533
	I X 14	-0294	-0454	-0614	-1094		I X 14	-1014	-0214	-0374	-0534
	I X 15	-0295	-0455	-0615	-1095		I X 15	-1015	-0215	-0375	-0535
	I X 16	-0296	-0456	-0616	-1096		I X 16	-1016	-0216	-0376	-0536
	I X 17	-0297	-0457	-0617	-1097		I X 17	-1017	-0217	-0377	-0537
	I X 18	-0298	-0458	-0618	-1098		I X 18	-1018	-0218	-0378	-0538
	I X 19	-0299	-0459	-0619	-1099		I X 19	-1019	-0219	-0379	-0539
	I X 20	-0300	-0460	-0620	-1100		I X 20	-1020	-0220	-0380	-0540
	I X 21	-0301	-0461	-0621	-1101		I X 21	-1021	-0221	-0381	-0541
	I X 22	-0302	-0462	-0622	-1102		I X 22	-1022	-0222	-0382	-0542
	I X 23	-0303	-0463	-0623	-1103		I X 23	-1023	-0223	-0383	-0543
	I X 24	-0304	-0464	-0624	-1104		I X 24	-1024	-0224	-0384	-0544
	I X 25	-0305	-0465	-0625	-1105		I X 25	-1025	-0225	-0385	-0545
	I X 26	-0306	-0466	-0626	-1106		I X 26	-1026	-0226	-0386	-0546
	I X 27	-0307	-0467	-0627	-1107		I X 27	-1027	-0227	-0387	-0547
	I X 28	-0308	-0468	-0628	-1108		I X 28	-1028	-0228	-0388	-0548
	I X 29	-0309	-0469	-0629	-1109		I X 29	-1029	-0229	-0389	-0549
	I X 30	-0310	-0470	-0630	-1110		I X 30	-1030	-0230	-0390	-0550
	I X 31	-0311	-0471	-0631	-1111		I X 31	-1031	-0231	-0391	-0551
	I X 32	-0312	-0472	-0632	-1112		I X 32	-1032	-0232	-0392	-0552
	I X 33	-0313	-0473	-0633	-1113		I X 33	-1033	-0233	-0393	-0553
	I X 34	-0314	-0474	-0634	-1114		I X 34	-1034	-0234	-0394	-0554
	I X 35	-0315	-0475	-0635	-1115		I X 35	-1035	-0235	-0395	-0555
	I X 36	-0316	-0476	-0636	-1116		I X 36	-1036	-0236	-0396	-0556
	I X 37	-0317	-0477	-0637	-1117		I X 37	-1037	-0237	-0397	-0557
	I X 38	-0318	-0478	-0638	-1118		I X 38	-1038	-0238	-0398	-0558
	I X 39	-0319	-0479	-0639	-1119		I X 39	-1039	-0239	-0399	-0559
	I X 40	90120-0320	90120-0480	90120-0640	90120-1120		I X 40	90120-1040	90120-0240	90120-0400	90120-0560

DIM C (+0.20) ±.008 (6.75) .266

DIM C (+0.20) ±.008 (5.75) .226

DIM D (+0.30) ±.008 (2.90) .114

DIM D (+0.30) ±.008 (2.90) .114

NOTES:
FOR PLATING VARIATIONS SEE
ENG.STD. SDES-99000-0003.

**NON-STANDARD PRODUCTS
NOT FOR GENERAL RELEASE**

REV	DESCRIPTION	QUALITY SYMBOLS
1	REV GD&T FOR DIM B	▽=0
2	EC NO: S2010-0493	▽=0
3	DRWNSKANG 2009/12/11	▽=0
4	CHKYATSEE 2009/12/21	
5	APPR:MLONG 2009/12/21	
6		

GENERAL TOLERANCES (UNLESS SPECIFIED)	
mm	INCH
4 PLACES ±---	±---
3 PLACES ±---	±---
2 PLACES ±---	±---
1 PLACE ±---	±---
ANGULAR ±---°	
DRAFT WHERE APPLICABLE MUST REMAIN WITHIN DIMENSIONS	

DIMENSION STYLE	
MM/IN	
DRAWN BY	DATE
JDENNEHY	2006/01/18
CHECKED BY	DATE
DWASZKIEWICZ	2006/01/18
APPROVED BY	DATE
MLONG	2009/12/21
MATERIAL NO.	
SEE TABLE	

SCALE	DESIGN UNITS	THIRD ANGLE PROJECTION
NTS	METRIC	
TITLE		
C-GRID III SINGLE ROW STRAIGHT PIN HEADER		
MOLEX INCORPORATED		
DOCUMENT NO.	SHEET NO.	
SDA-90120	5 OF 6	
THIS DRAWING CONTAINS INFORMATION THAT IS PROPRIETARY TO MOLEX INCORPORATED AND SHOULD NOT BE USED WITHOUT WRITTEN PERMISSION		

	10	9	8	7	6	5	4	3	2	1	
	CIRCUIT SIZE	PLATING TYPE B PART NO.	PLATING TYPE C PART NO.	PLATING TYPE D PART NO.	PLATING TYPE G PART NO.		CIRCUIT SIZE	PLATING TYPE B PART NO.	PLATING TYPE C PART NO.	PLATING TYPE D PART NO.	PLATING TYPE G PART NO.
	I X 1	90120-0241	90120-0401	90120-0561	90120-1041		I X 1	90120-0321	90120-0481	90120-0641	90120-1121
	I X 2	-0242	-0402	-0562	-1042		I X 2	-0322	-0482	-0642	-1122
	I X 3	-0243	-0403	-0563	-1043		I X 3	-0323	-0483	-0643	-1123
	I X 4	-0244	-0404	-0564	-1044		I X 4	-0324	-0484	-0644	-1124
	I X 5	-0245	-0405	-0565	-1045		I X 5	-0325	-0485	-0645	-1125
	I X 6	-0246	-0406	-0566	-1046		I X 6	-0326	-0486	-0646	-1126
	I X 7	-0247	-0407	-0567	-1047		I X 7	-0327	-0487	-0647	-1127
	I X 8	-0248	-0408	-0568	-1048		I X 8	-0328	-0488	-0648	-1128
	I X 9	-0249	-0409	-0569	-1049		I X 9	-0329	-0489	-0649	-1129
	I X 10	-0250	-0410	-0570	-1050		I X 10	-0330	-0490	-0650	-1130
	I X 11	-0251	-0411	-0571	-1051		I X 11	-0331	-0491	-0651	-1131
	I X 12	-0252	-0412	-0572	-1052		I X 12	-0332	-0492	-0652	-1132
	I X 13	-0253	-0413	-0573	-1053		I X 13	-0333	-0493	-0653	-1133
	I X 14	-0254	-0414	-0574	-1054		I X 14	-0334	-0494	-0654	-1134
	I X 15	-0255	-0415	-0575	-1055		I X 15	-0335	-0495	-0655	-1135
	I X 16	-0256	-0416	-0576	-1056		I X 16	-0336	-0496	-0656	-1136
	I X 17	-0257	-0417	-0577	-1057		I X 17	-0337	-0497	-0657	-1137
	I X 18	-0258	-0418	-0578	-1058		I X 18	-0338	-0498	-0658	-1138
	I X 19	-0259	-0419	-0579	-1059		I X 19	-0339	-0499	-0659	-1139
	I X 20	-0260	-0420	-0580	-1060		I X 20	-0340	-0500	-0660	-1140
	I X 21	-0261	-0421	-0581	-1061		I X 21	-0341	-0501	-0661	-1141
	I X 22	-0262	-0422	-0582	-1062		I X 22	-0342	-0502	-0662	-1142
	I X 23	-0263	-0423	-0583	-1063		I X 23	-0343	-0503	-0663	-1143
	I X 24	-0264	-0424	-0584	-1064		I X 24	-0344	-0504	-0664	-1144
	I X 25	-0265	-0425	-0585	-1065		I X 25	-0345	-0505	-0665	-1145
	I X 26	-0266	-0426	-0586	-1066		I X 26	-0346	-0506	-0666	-1146
	I X 27	-0267	-0427	-0587	-1067		I X 27	-0347	-0507	-0667	-1147
	I X 28	-0268	-0428	-0588	-1068		I X 28	-0348	-0508	-0668	-1148
	I X 29	-0269	-0429	-0589	-1069		I X 29	-0349	-0509	-0669	-1149
	I X 30	-0270	-0430	-0590	-1070		I X 30	-0350	-0510	-0670	-1150
	I X 31	-0271	-0431	-0591	-1071		I X 31	-0351	-0511	-0671	-1151
	I X 32	-0272	-0432	-0592	-1072		I X 32	-0352	-0512	-0672	-1152
	I X 33	-0273	-0433	-0593	-1073		I X 33	-0353	-0513	-0673	-1153
	I X 34	-0274	-0434	-0594	-1074		I X 34	-0354	-0514	-0674	-1154
	I X 35	-0275	-0435	-0595	-1075		I X 35	-0355	-0515	-0675	-1155
	I X 36	-0276	-0436	-0596	-1076		I X 36	-0356	-0516	-0676	-1156
	I X 37	-0277	-0437	-0597	-1077		I X 37	-0357	-0517	-0677	-1157
	I X 38	-0278	-0438	-0598	-1078		I X 38	-0358	-0518	-0678	-1158
	I X 39	-0279	-0439	-0599	-1079		I X 39	-0359	-0519	-0679	-1159
	I X 40	90120-0280	90120-0440	90120-0600	90120-1080		I X 40	90120-0360	90120-0520	90120-0680	90120-1160

DIM C (±0.25) ±.008 (5.75) .226

DIM C (±0.25) ±.008 (6.75) .266

DIM D (±0.25) ±.008 (4.50) .177

DIM D (±0.25) ±.008 (4.50) .177

NOTES:
FOR PLATING VARIATIONS SEE
ENG.STD. SDES-99000-0003.

**NON-STANDARD PRODUCTS
NOT FOR GENERAL RELEASE**

REV	DESCRIPTION	DATE
1	DRWSKANG	2009/12/11
2	CHKDATSEE	2009/12/21
3	APPR:MLONG	2009/12/21

QUALITY SYMBOLS	
	0
	0
	0

GENERAL TOLERANCES (UNLESS SPECIFIED)	
4 PLACES	±.005
3 PLACES	±.004
2 PLACES	±.003
1 PLACE	±.002
ANGULAR ±.005°	

DRAWN BY	DATE	SCALE	DESIGN UNITS	THIRD ANGLE PROJECTION
JDENNEHY	2006/01/18	NTS	METRIC	
CHECKED BY	DATE	TITLE		
DWASZKIEWICZ	2006/01/18	C-GRID III SINGLE ROW STRAIGHT PIN HEADER		
APPROVED BY	DATE	MOLEX INCORPORATED		
MLONG	2009/12/21			
MATERIAL NO.	DOCUMENT NO.	SHEET NO.		
SEE TABLE	SDA-90120	6 OF 6		

DRAFT WHERE APPLICABLE
MUST REMAIN
WITHIN DIMENSIONS

THIS DRAWING CONTAINS INFORMATION THAT IS PROPRIETARY TO MOLEX
INCORPORATED AND SHOULD NOT BE USED WITHOUT WRITTEN PERMISSION

10 9 8 7 6 5 4 3 2 1

CIRCUIT SIZE	PLATING TYPE A		PLATING TYPE E		PLATING TYPE F	
	PART NO.	CUSTOMER SPECIFIC PART NO.	PART NO.	CUSTOMER SPECIFIC PART NO.	PART NO.	CUSTOMER SPECIFIC PART NO.
I X 1	90120-0121	90120-9121	90120-0761	90120-9761	90120-0921	90120-9921
I X 2	-0122	-9122	-0762	-9762	-0922	-9922
I X 3	-0123	-9123	-0763	-9763	-0923	-9923
I X 4	-0124	-9124	-0764	-9764	-0924	-9924
I X 5	-0125	-9125	-0765	-9765	-0925	-9925
I X 6	-0126	-9126	-0766	-9766	-0926	-9926
I X 7	-0127	-9127	-0767	-9767	-0927	-9927
I X 8	-0128	-9128	-0768	-9768	-0928	-9928
I X 9	-0129	-9129	-0769	-9769	-0929	-9929
I X 10	-0130	-9130	-0770	-9770	-0930	-9930
I X 11	-0131	-9131	-0771	-9771	-0931	-9931
I X 12	-0132	-9132	-0772	-9772	-0932	-9932
I X 13	-0133	-9133	-0773	-9773	-0933	-9933
I X 14	-0134	-9134	-0774	-9774	-0934	-9934
I X 15	-0135	-9135	-0775	-9775	-0935	-9935
I X 16	-0136	-9136	-0776	-9776	-0936	-9936
I X 17	-0137	-9137	-0777	-9777	-0937	-9937
I X 18	-0138	-9138	-0778	-9778	-0938	-9938
I X 19	-0139	-9139	-0779	-9779	-0939	-9939
I X 20	-0140	-9140	-0780	-9780	-0940	-9940
I X 21	-0141	-9141	-0781	-9781	-0941	-9941
I X 22	-0142	-9142	-0782	-9782	-0942	-9942
I X 23	-0143	-9143	-0783	-9783	-0943	-9943
I X 24	-0144	-9144	-0784	-9784	-0944	-9944
I X 25	-0145	-9145	-0785	-9785	-0945	-9945
I X 26	-0146	-9146	-0786	-9786	-0946	-9946
I X 27	-0147	-9147	-0787	-9787	-0947	-9947
I X 28	-0148	-9148	-0788	-9788	-0948	-9948
I X 29	-0149	-9149	-0789	-9789	-0949	-9949
I X 30	-0150	-9150	-0790	-9790	-0950	-9950
I X 31	-0151	-9151	-0791	-9791	-0951	-9951
I X 32	-0152	-9152	-0792	-9792	-0952	-9952
I X 33	-0153	-9153	-0793	-9793	-0953	-9953
I X 34	-0154	-9154	-0794	-9794	-0954	-9954
I X 35	-0155	-9155	-0795	-9795	-0955	-9955
I X 36	-0156	-9156	-0796	-9796	-0956	-9956
I X 37	-0157	-9157	-0797	-9797	-0957	-9957
I X 38	-0158	-9158	-0798	-9798	-0958	-9958
I X 39	-0159	-9159	-0799	-9799	-0959	-9959
I X 40	90120-0160	90120-9160	90120-0800	90120-9800	90120-0960	90120-9960

DIM C (+0.20 / -0.008) (6.75) .266

DIM D (+0.30 / -0.008) (2.90) .114

NOTES:
FOR PLATING VARIATIONS SEE
ENG.STD. SDES-99000-0003.

STANDARD PRODUCTS

PART NOS ADDED EC NO. E2006-0667 DRAWN: JDENNEHY 2006/01/18 CHKD: DWASZKIEWICZ 2006/01/18 APPR: JDENNEHY 2006/02/07	QUALITY SYMBOLS ▽=0 ▽=0	GENERAL TOLERANCES (UNLESS SPECIFIED) mm INCH 4 PLACES ± --- ± --- 3 PLACES ± --- ± --- 2 PLACES ± --- ± --- 1 PLACE ± --- ± --- ANGULAR ± ---°	DIMENSION STYLE MM ONLY	SCALE ---	DESIGN UNITS METRIC	THIRD ANGLE PROJECTION
			DRAWN BY JDENNEHY	DATE 2006/01/18	TITLE C-GRID III SINGLE ROW STRAIGHT PIN HEADER	
DRAFT WHERE APPLICABLE MUST REMAIN WITHIN DIMENSIONS			APPROVED BY JDENNEHY	DATE 2006/01/18	MATERIAL NO.	DOCUMENT NO. SDA-90120
SIZE A3			THIS DRAWING CONTAINS INFORMATION THAT IS PROPRIETARY TO MOLEX INCORPORATED AND SHOULD NOT BE USED WITHOUT WRITTEN PERMISSION			

MOLEX MOLEX INCORPORATED
SHEET NO. 2 OF 6

9 8 7 6 5 4 3 2 1