

PLEASE CHECK WWW.MOLEX.COM FOR LATEST PART INFORMATION

Part Number: [0901190111](#)
Status: **Active**
Overview: [cgrid_iii](#)
Description: C-Grid III™ Crimp Terminal, 22-24 AWG, Reel, 0.76µm (30µ") Selective Gold (Au)

Documents:

[3D Model](#) [RoHS Certificate of Compliance \(PDF\)](#)
[Drawing \(PDF\)](#)

General

Product Family	Crimp Terminals
Series	90119
Comments	Left-hand feed
Crimp Quality Equipment	Yes
Overview	cgrid_iii
Product Name	C-Grid III™

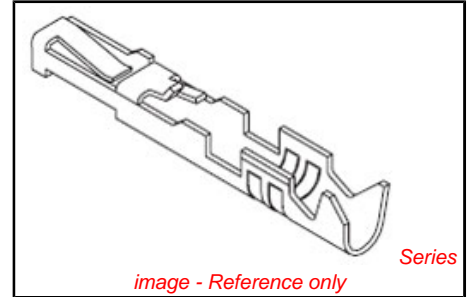
Physical

Gender	Female
Material - Metal	Phosphor Bronze
Material - Plating Mating	Gold
Material - Plating Termination	Tin
Packaging Type	Reel
Plating min: Mating (µin)	30.4
Plating min: Mating (µm)	0.76
Plating min: Termination (µin)	120
Plating min: Termination (µm)	3
Termination Interface: Style	Crimp or Compression
Wire Insulation Diameter	1.02-1.47mm (.040-.058")
Wire Size AWG	22, 24
Wire Size mm²	N/A

Material Info

Reference - Drawing Numbers

Sales Drawing [SD-90119](#)



EU RoHS

ELV and RoHS Compliant
REACH SVHC Contains SVHC: No
Halogen-Free Status
Halogen-Free

China RoHS



Need more information on product environmental compliance?

Email productcompliance@molex.com
 For a multiple part number RoHS Certificate of Compliance, [click here](#)

Please visit the [Contact Us](#) section for any non-product compliance questions.

Search Parts in this Series

[90119Series](#)

Use With

C-Grid III™ Modular Crimp Housing [90156](#) , [90123](#) , [90142](#) , [90143](#) , [90160](#)

Application Tooling | FAQ

Tooling specifications and manuals are found by selecting the products below. Crimp Height Specifications are then contained in the Application Tooling Specification document.

Global

Description	Product #
C-Grid Insertion Tool	0690080140
Extraction Aid	0690080003
Hand Crimp Tool	0638190200
T2 Terminator Die	0638514100
FineAdjust™	0638614100

Japan

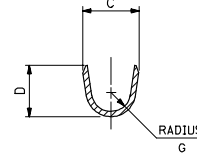
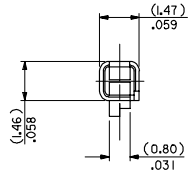
Description	Product #
-------------	-----------

Applicator for M211A [0571983000](#)
Bench Press, 22-24
AWG, for 90119
Crimp Terminal

This document was generated on 05/28/2010

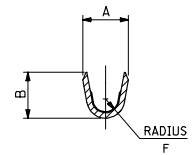
PLEASE CHECK WWW.MOLEX.COM FOR LATEST PART INFORMATION

SECTION X-X



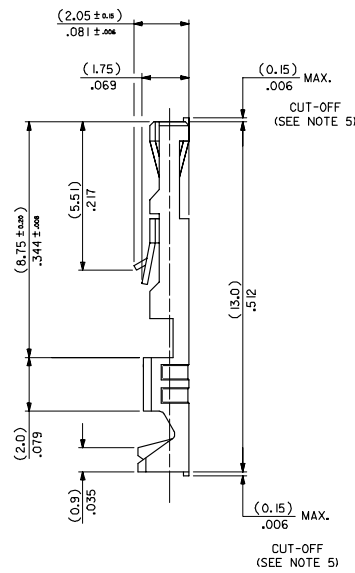
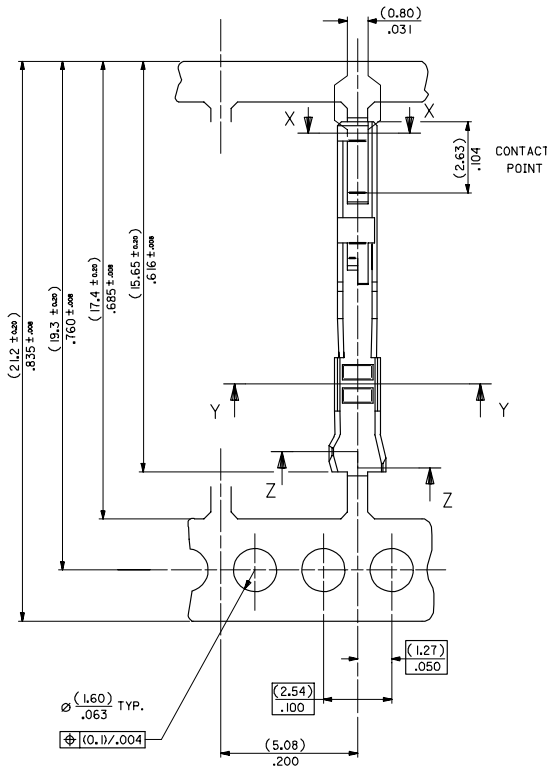
SECTION Z-Z

INSULATION BARREL



SECTION Y-Y

WIRE BARREL



NOTES:

1. MATERIAL - PHOSPHOR BRONZE CDA 521 THICKNESS: (0.200) / .008 TENSILE STRENGTH: 655-760 N/mm² PLATING - SEE SHEET 2
2. FOR DIMENSIONS A, B, C, D, F & G SEE SHEET 2
3. FOR WIRE SIZE & INSULATION DIA SEE SHEET 2
4. THIS TERMINAL TO MATE WITH (0.635) / .025 SQUARE PIN
5. MAX BURR AFTER CUT-OFF (0.025) / .001

REMOVED LEAD REF. EC NO: E2006-0155 DRAWN: JDENNEHY 2005/08/29 CHKD: MORIARTY 2005/08/29 APPR: JDENNEHY 2005/09/05	QUALITY SYMBOLS ▽=0 ▽=0	GENERAL TOLERANCES (UNLESS SPECIFIED)		DIMENSION STYLE	SCALE	DESIGN UNITS	THIRD ANGLE PROJECTION		
				MM ONLY	10:1	METRIC	⊙		
		4 PLACES ± .004 ± .004	3 PLACES ± .004 ± .004	2 PLACES ± 0.1 ± .008	1 PLACE ± 0.2 ± .004	ANGULAR ± 5°	DRAWN BY: NPC DATE: 1987/08/27 CHECKED BY: D. MORIARTY DATE: 2005/08/26 APPROVED BY: JDENNEHY DATE: 2005/08/26		
		DRAFT WHERE APPLICABLE MUST REMAIN WITHIN DIMENSIONS		SEE CHART		MATERIAL NO.	DOCUMENT NO.	SHEET NO.	
K		REV		SD-90119		1 OF 2			

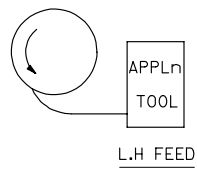
C-GRID III FEMALE CRIMP TERMINAL

MOLEX INCORPORATED

10 9 8 7 6 5 4 3 2 1

PART No	PLATING	REELING	WIRE SIZE (AWG)	INSULATION RANGE	CRIMP DIMENSIONS					
					WIRE BARREL			INSULATION BARREL		
					A $\pm \frac{(0.5)}{.006}$	B $\pm \frac{(0.5)}{.006}$	F $\pm \frac{(0.5)}{.006}$	C $\pm \frac{(0.5)}{.006}$	D $\pm \frac{(0.5)}{.006}$	G $\pm \frac{(0.5)}{.006}$
90119-0109	A	L.H FEED	22,24	(1.02-1.47) .040-.058	(1.70)	(1.70)	(0.51)	(2.10)	(1.90)	(0.70)
-0110	E				.067	.067	0.20	.083	.075	0.27
-0111	F									
-0120	A									
-0121	E									
-0122	F	LOOSE PIECE PARTS	26,28	(0.76-1.22) .030-.048	(1.37)	(1.37)	(0.28)	(2.00)	(1.70)	(0.60)
-2109	A				.054	.054	0.11	.079	.067	0.24
-2110	E									
-2111	F									
-2120	A									
-2121	E									
90119-2122	F									

TYPE	PLATING
A	PRE-PLATED HOT DIP TIN (1.0 to 2.5 um)/.00004 TO .0001
E	(1.27 TO 1.78um)/.00005 TO .00007 NICKEL OVERALL. (0.38 TO 0.64um)/.000015 TO .000025 GOLD ON CONTACT AREA. (3.0 TO 5.0 um)/.00012 TO .0002 TIN ON TERMINATION AREA.
F	(1.27 TO 1.78um)/.00005 TO .00007 NICKEL OVERALL. (0.76 TO 0.10 um)/.00003 TO .00004 GOLD ON CONTACT AREA. (3.0 TO 5.0 um)/.00012 TO .0002 TIN ON TERMINATION AREA.



REMOVED LEAD REF. EC NO: E2006-0155 DRAWN: J DENNEHY 2005/08/29 CHKD: DMOR IARTY 2005/08/29 APPR: J DENNEHY 2005/09/05	QUALITY SYMBOLS	GENERAL TOLERANCES (UNLESS SPECIFIED)	DIMENSION STYLE	SCALE	DESIGN UNITS	THIRD ANGLE PROJECTION		
	▽=0		mm INCH	MM ONLY	---	METRIC	☉	
	▽=0		4 PLACES ± --- ± ---	DRAWN BY	DATE	TITLE		
	DESCRIPTION		3 PLACES ± --- ± ---	KS	1987/09/01	C-GRID III FEMALE CRIMP TERMINAL		
REV	2 PLACES ± --- ± ---	2 PLACES ± --- ± ---	CHECKED BY	DATE	MOLEX INCORPORATED			
	1 PLACE ± --- ± ---	1 PLACE ± --- ± ---	DMOR IARTY	2005/08/26	MATERIAL NO. DOCUMENT NO. SHEET NO.			
	ANGULAR ± ---°	ANGULAR ± ---°	APPROVED BY	DATE	SD-90119 2 OF 2			
			J DENNEHY	2005/08/26	SEE CHART THIS DRAWING CONTAINS INFORMATION THAT IS PROPRIETARY TO MOLEX INCORPORATED AND SHOULD NOT BE USED WITHOUT WRITTEN PERMISSION			

9 8 7 6 5 4 3 2 1