

**PLEASE CHECK WWW.MOLEX.COM FOR LATEST PART INFORMATION**

**Part Number:** **0674911030**  
**Status:** **Active**  
**Overview:** Serial ATA Products  
**Description:** 1.27mm (.050") Pitch Serial ATA High Speed Header, Through Hole, Vertical, 7 Circuits, Gold (Au) Flash, with 2.05mm (.081") PC Tail Length, for 1.60mm (.063") PCB, Black Housing, Lead-free

**Documents:**

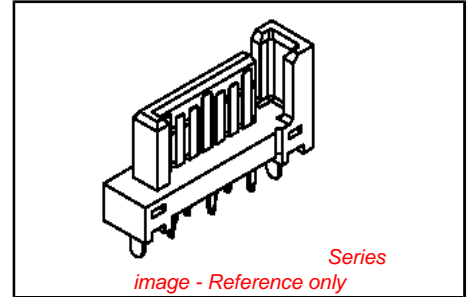
[3D Model](#) [Product Specification PS-67491-001 \(PDF\)](#)  
[Drawing \(PDF\)](#) [RoHS Certificate of Compliance \(PDF\)](#)

**General**

Product Family	PCB Headers
Series	67491
Application	Board-to-Board, Wire-to-Board
Overview	<a href="#">Serial ATA Products</a>
Product Name	Serial ATA

**Physical**

Breakaway	No
Circuits (Loaded)	7
Color - Resin	Black
Durability (mating cycles max)	50
First Mate / Last Break	Yes
Glow-Wire Compliant	No
Guide to Mating Part	No
Keying to Mating Part	Yes
Lock to Mating Part	Yes
Material - Plating Mating	Gold
Material - Plating Termination	Tin
Material - Resin	Polyester
Number of Rows	1
Orientation	Vertical
PC Tail Length (in)	0.081 In
PC Tail Length (mm)	2.05 mm
PCB Locator	Yes
PCB Retention	Yes
PCB Thickness Recommended (in)	0.062 In
PCB Thickness Recommended (mm)	1.60 mm
Packaging Type	Tray
Pitch - Mating Interface (in)	0.050 In
Pitch - Mating Interface (mm)	1.27 mm
Pitch - Term. Interface (in)	0.050 In
Pitch - Term. Interface (mm)	1.27 mm
Plating min: Mating (µin)	2
Plating min: Mating (µm)	0.05
Plating min: Termination (µin)	50.8
Plating min: Termination (µm)	1.27
Polarized to Mating Part	Yes
Polarized to PCB	Yes
Shrouded	No
Stackable	No
Surface Mount Compatible (SMC)	No
Temperature Range - Operating	-35°C to +85°C
Termination Interface: Style	Through Hole



**EU RoHS**

**ELV and RoHS Compliant**

**REACH SVHC**

Not Reviewed

**Halogen-Free**

**Status**

**Not Halogen-Free**

**Need more information on product environmental compliance?**

Email [productcompliance@molex.com](mailto:productcompliance@molex.com)  
 For a multiple part number RoHS Certificate of Compliance, [click here](#)

Please visit the [Contact Us](#) section for any non-product compliance questions.

**China RoHS**



**Search Parts in this Series**  
67491Series

**Mates With**  
Serial ATA Signal Connector 67489 , 88755

**Electrical**

Current - Maximum per Contact 1.5A  
Voltage - Maximum 15V DC

**Material Info****Reference - Drawing Numbers**

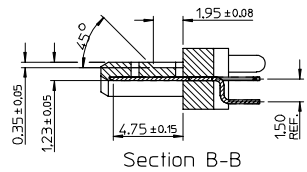
Product Specification PS-67491-001  
Sales Drawing SD-67491-002

This document was generated on 04/07/2010

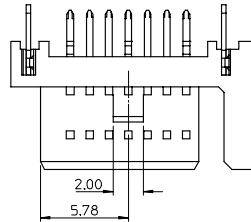
**PLEASE CHECK [WWW.MOLEX.COM](http://WWW.MOLEX.COM) FOR LATEST PART INFORMATION**



10 9 8 7 6 5 4 3 2 1

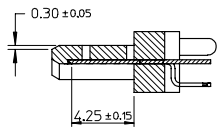


Section B-B

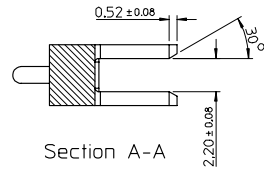
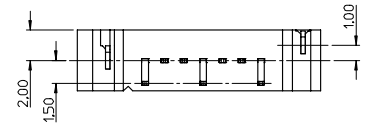
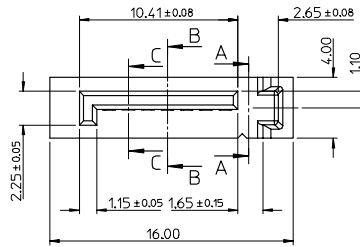


NOTES:

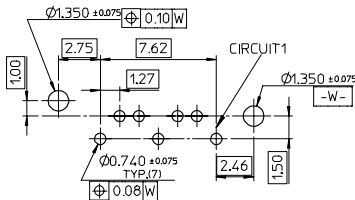
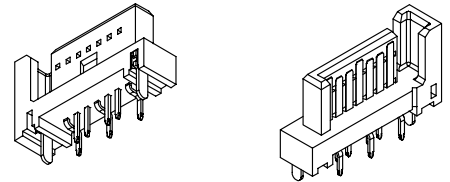
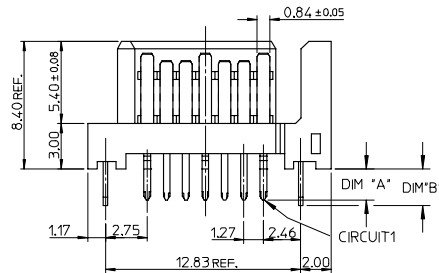
1. MATERIAL:  
HOUSING: SEE TABLE, UL94V-0, COLOR: BLACK OR BULE (SEE P/N TABLE)  
TERMINAL/PEG: COPPER ALLOY
2. TERMINAL PLATING :  
CONTACT AREA: GOLD PLATED  
SOLDER TAIL: 1.27 MICRON MIN. TIN PLATED  
UNDER PLATE: 1.27 MICRON MIN. NICKEL PLATED
3. PEG PLATING:  
1.27 MICRON MIN. TIN PLATED  
OVERALL 1.27 MICRON MIN. NICKEL UNDER PLATED
4. PACKAGING SPECIFICATION REFER TO PK-67491-001
5. PRODUCT SPECIFICATION REFER TO PS-67491-001
6. MATING PART: 67489
7. RECOMMENDED PROCESS: WAVE SOLDERING
8. PRODUCT COMPLIANT TO RoHS DIRECTIVE 2002/95/EC AND ELV DIRECTIVE 2000/53/EC\*



Section C-C



Section A-A



RECOMMENDED P.C.B. LAYOUT t=1.6mm OR 2.0mm

ADD PART NUMBER EC NO. SH2007-0134 TIDRW:RCHEN26 CHKD:JIAN APPR: JICHEN 2006/09/01 2006/09/01 2006/09/08	QUALITY SYMBOLS ▽=0 ▽=0	GENERAL TOLERANCES (UNLESS SPECIFIED)		DIMENSION STYLE MM ONLY	SCALE 4:1	DESIGN UNITS METRIC	THIRD ANGLE PROJECTION		
		4 PLACES ± --- ± ---	3 PLACES ± --- ± ---	2 PLACES ± 0.15 ± ---	1 PLACE ± 0.25 ± ---	DRAWN BY RICHARD	DATE '01/06/21	TITLE 1.27MM HIGH SPEED SERIAL PLUG VERTICAL TYPE	
		ANGULAR ± 3 °		DRAFT WHERE APPLICABLE MUST REMAIN WITHIN DIMENSIONS		CHECKED BY VINCENT	DATE '01/06/21	MOLEX INCORPORATED	
		MATERIAL NO. SEE SHEET 2		DOCUMENT NO. SD-67491-002		SHEET NO. 1 OF 2		THIS DRAWING CONTAINS INFORMATION THAT IS PROPRIETARY TO MOLEX INCORPORATED AND SHOULD NOT BE USED WITHOUT WRITTEN PERMISSION	

9 8 7 6 5 4 3 2 1

	10	9	8	7	6	5	4	3	2	1			
	P/N	CONTACT PLATING TYPE	"A"	"B"	PCB THICKNESS	SOLDERING PLATE	COLOR	PLASTIC TYPE					
F	67491-1030	GOLD FLASH	2.05	2.40	1.60	PURE TIN	BLACK	THERMAL PLASTIC	▽				
	67491-1031	0.76 MICRON GOLD PLATED											
	67491-1032	0.38 MICRON GOLD PLATED											
67491-1035	GOLD FLASH	2.35	2.40	2.00									
67491-1036	0.76 MICRON GOLD PLATED												
67491-1037	0.38 MICRON GOLD PLATED												
E	67491-1038	GOLD FLASH	3.00	3.20	2.40		PURE TIN	BLUE PENTONE NO.293C ΔE<3			THERMAL PLASTIC	▽	
	67491-1039	0.76 MICRON GOLD PLATED											
	67491-1040	0.38 MICRON GOLD PLATED											
D	67491-2030	GOLD FLASH	2.05	2.40	1.60		PURE TIN	BLACK			HIGH TEMPERATURE THERMAL PLASTIC	▽	
	67491-2031	0.76 MICRON GOLD PLATED											
	67491-2032	0.38 MICRON GOLD PLATED											
67491-2035	GOLD FLASH	2.35	2.40	2.00									
67491-2036	0.76 MICRON GOLD PLATED												
67491-2037	0.38 MICRON GOLD PLATED												
C	67491-2038	GOLD FLASH	3.00	3.20	2.40	PURE TIN		BLACK	HIGH TEMPERATURE THERMAL PLASTIC	▽			
	67491-2039	0.76 MICRON GOLD PLATED											
	67491-2040	0.38 MICRON GOLD PLATED											
B	67491-1130	GOLD FLASH	2.05	2.40	1.60	PURE TIN		BLACK	HIGH TEMPERATURE THERMAL PLASTIC	▽			
	67491-1131	0.76 MICRON GOLD PLATED											
	67491-1132	0.38 MICRON GOLD PLATED											
67491-1135	GOLD FLASH	2.35	2.40	2.00									
67491-1136	0.76 MICRON GOLD PLATED												
67491-1137	0.38 MICRON GOLD PLATED												
A	67491-1138	GOLD FLASH	3.00	3.20	2.40		PURE TIN	BLACK	HIGH TEMPERATURE THERMAL PLASTIC			▽	
	67491-1139	0.76 MICRON GOLD PLATED											
	67491-1140	0.38 MICRON GOLD PLATED											

ADD PART NUMBER EC NO. SH2007-0134 T: DRW: W: R: CHEN26 - 2006/09/01 CHIKO: J: TAN 2006/09/01 APPR: J: CHEN 2006/09/08	QUALITY SYMBOLS	GENERAL TOLERANCES (UNLESS SPECIFIED)	DIMENSION STYLE	SCALE	DESIGN UNITS	THIRD ANGLE PROJECTION
	▽=0	mm INCH	MM ONLY	4:1	METRIC	
	▽=0	4 PLACES ± --- ± ---	DRAWN BY DATE	TITLE		
		3 PLACES ± --- ± ---	RICHARD '01/06/21	1.27MM HIGH SPEED SERIAL PLUG VERTICAL TYPE		
	2 PLACES ± 0.15 ± ---	CHECKED BY DATE	MATERIAL NO.			
	1 PLACE ± 0.25 ± ---	VINCENT '01/06/21	SD-67491-002			
	ANGULAR ± 3 °	APPROVED BY DATE	DOCUMENT NO.			
		ERIC '01/06/21	SD-67491-002			
			SHEET NO.			
			2 OF 2			
			THIS DRAWING CONTAINS INFORMATION THAT IS PROPRIETARY TO MOLEX INCORPORATED AND SHOULD NOT BE USED WITHOUT WRITTEN PERMISSION			