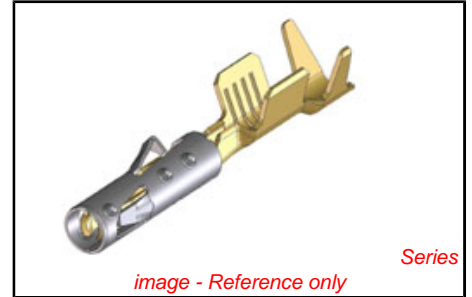


PLEASE CHECK WWW.MOLEX.COM FOR LATEST PART INFORMATION

Part Number: [0643221029](#)
Status: **Active**
Overview: [cmc_connectors](#)
Description: 0.635mm (.025") CMC CP Female Terminal, Tin Plated, for Square 0.6mm x 0.6mm Pins, Wire Size 0.75mm²

Documents:

3D Model	Product Specification PS-64319-001 (PDF)
Drawing (PDF)	Product Specification PS-64321-001 (PDF)
Product Specification PS-64318-001 (PDF)	RoHS Certificate of Compliance (PDF)



General

Product Family	Crimp Terminals
Series	64322
Comments	* Current tested on a 5 terminals loaded connector, current for temperature increase of 40°C. Current max = 6.0A for 0.635mm Terminal(0.75mm ² wire)
Crimp Quality Equipment	Yes
Overview	cmc_connectors
Product Name	CMC, CP Terminal

Physical

Durability (mating cycles max)	20
Gender	Female
Material - Metal	Phosphor Bronze
Material - Plating Mating	Tin
Material - Plating Termination	Tin
Packaging Type	Reel
Plating min: Mating (µm)	1.5, 3
Termination Interface: Style	Crimp or Compression
Wire Insulation Diameter	1.60mm-1.90mm
Wire Size AWG	N/A
Wire Size mm ²	0.75

Electrical

Current - Maximum per Contact	6A
Voltage - Maximum	250V AC

Material Info

Reference - Drawing Numbers

Application Specification	AS-64321-001, AS-98993-011
Packaging Specification	PK-98913-001
Product Specification	PS-64318-001, PS-64319-001, PS-64321-001
Sales Drawing	SD-64322-001

EU RoHS

ELV and RoHS Compliant
REACH SVHC
 Not Reviewed
Halogen-Free Status
Halogen-Free

China RoHS



Need more information on product environmental compliance?

Email productcompliance@molex.com
 For a multiple part number RoHS Certificate of Compliance, [click here](#)

Please visit the [Contact Us](#) section for any non-product compliance questions.

Search Parts in this Series
[64322Series](#)

Mates With
 CMC Connector [64318](#) , [64319](#) , [64320](#) , [64321](#)

Use With
 CMC Connector [64318](#) , [64319](#) , [64320](#) , [64321](#)

Application Tooling | FAQ

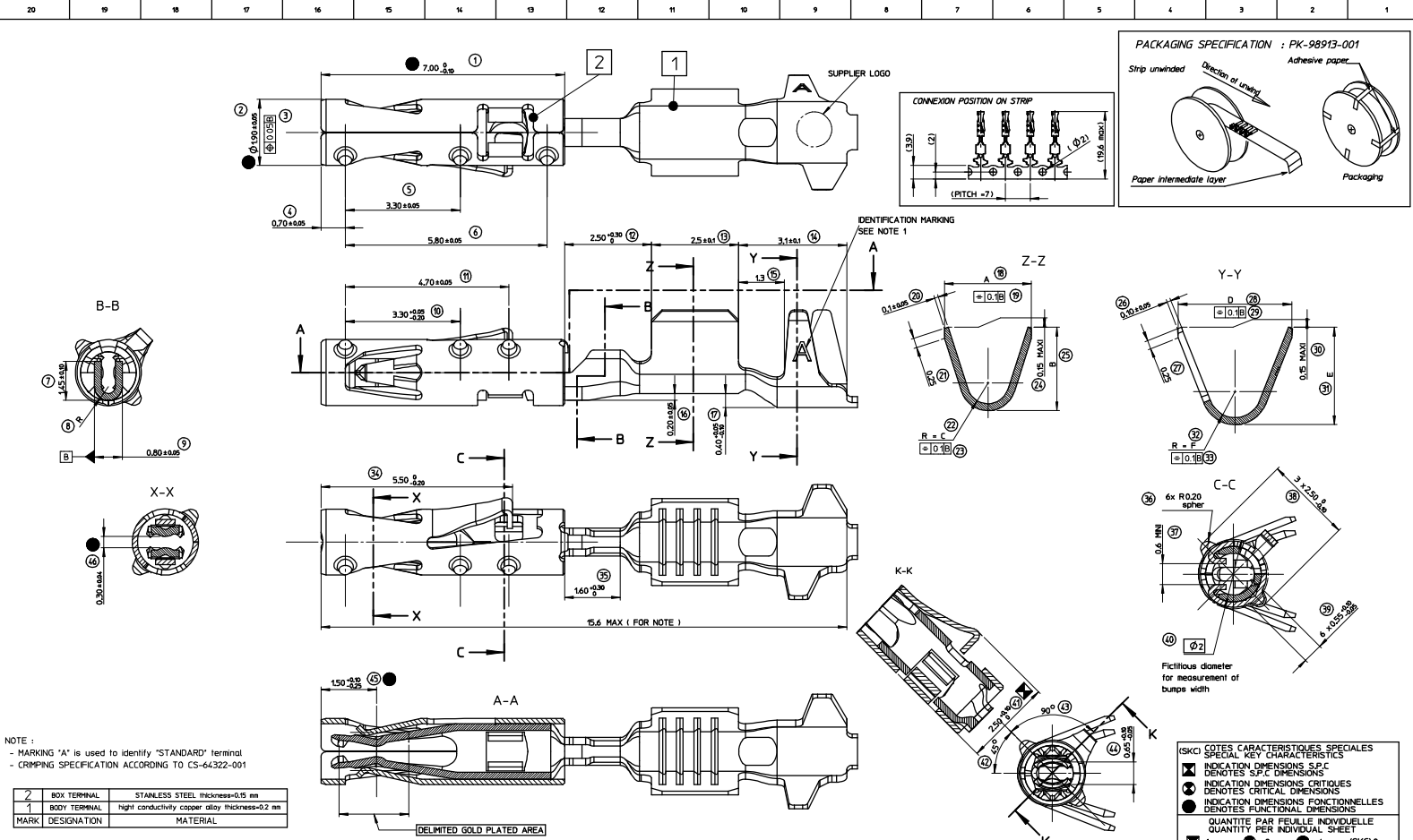
Tooling specifications and manuals are found by selecting the products below. Crimp Height Specifications are then contained in the Application Tooling Specification document.

Global

Description	Product #
FineAdjust™ Applicator	0638689100
Extraction Tool	0638132400
HAND CRIMP TOOL	0638119200

This document was generated on 06/07/2010

PLEASE CHECK WWW.MOLEX.COM FOR LATEST PART INFORMATION



NOTE :
 - MARKING "A" is used to identify "STANDARD" terminal
 - CRIMPING SPECIFICATION ACCORDING TO CS-64322-001

2	BOX TERMINAL	STAINLESS STEEL thickness=0.15 mm
1	BODY TERMINAL	high conductivity copper alloy thickness=0.2 mm
MARK	DESIGNATION	MATERIAL

0643221029	Sn	Sn			0.75	2.5	2.4	0.6	3.3	2.8	0.75	0.119
0643221219	Au 1,27H MINI	Sn		Ni	0.50	2.3	2.2	0.6	3.1	2.6	0.75	0.117
0643221239	Au 1,27H MINI	Sn		Ni	0.22 to 0.44	2.0	1.7	0.6	3.1	2.6	0.75	0.112
0643221019	Sn	Sn										
0643221229	Au 1,27H MINI	Sn		Ni								
PART NUMBER	CONTACT AREA	CRIMPING AREA	UNDERLAYER PLATING		CRIMPING RANGE (mm ²)	A±0.2	B±0.2	rC +0.15 -0.1	D±0.2	E±0.2	rF±0.1	WEIGHT (g)

Revision Dwg EC N°: 064322-010 DRAWN: JULIO 2008/05/19 CHECKED: CAROLARI 2008/05/19 APPROVED: LEIR 2008/05/19 DESCRIPTION:	GENERAL TOLERANCES (UNLESS SPECIFIED): 4 PLACES ± 0.15 3 PLACES ± 0.10 2 PLACES ± 0.10 1 PLACE ± 0.15 ANGULAR ± 2°	DIMENSION STYLE MM ONLY	SCALE 20:1	DESIGN UNIT'S METRIC	DESIGN UNITS FIRST ANGLE PROJECTION	
	DRAWN BY CAROLARI	DATE 2007/09/17	TITLE CP RCPT TRM 0.6			
	CHECKED BY JUDCLOS	DATE 2007/09/17				
	APPROVED BY STICKEIR	DATE 2007/09/17				
MATERIAL NO. SD-64322-001	SEE CHART	DOCUMENT NO. SD-64322-001	MOLEX INCORPORATED			
DRAFT WHERE APPLICABLE MUST REMAIN WITHIN DIMENSIONS		SIZE A1	THIS DRAWING CONTAINS INFORMATION THAT IS PROPRIETARY TO MOLEX INCORPORATED AND SHOULD NOT BE USED WITHOUT WRITTEN PERMISSION			