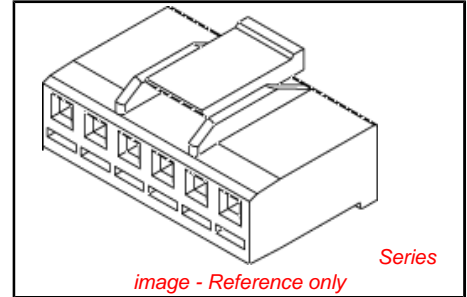


**PLEASE CHECK WWW.MOLEX.COM FOR LATEST PART INFORMATION**

**Part Number:** **0510670900**  
**Status:** **Active**  
**Description:** 3.50mm (.138") Pitch Wire-to-Wire and Wire-to-Board Housing, Positive Lock, 9 Circuits



**Documents:**

- |  |  |
|--|--|
| <a href="#">3D Model</a>                                 | <a href="#">Product Specification PS-51067-007 (PDF)</a> |
| <a href="#">Drawing (PDF)</a>                            | <a href="#">Product Specification PS-51067-008 (PDF)</a> |
| <a href="#">Product Specification PS-51067-001 (PDF)</a> | <a href="#">Product Specification PS-51067-016 (PDF)</a> |
| <a href="#">Product Specification PS-51067-002 (PDF)</a> | <a href="#">Product Specification PS-51067-017 (PDF)</a> |
| <a href="#">Product Specification PS-51067-003 (PDF)</a> | <a href="#">Product Specification PS-51067-018 (PDF)</a> |
| <a href="#">Product Specification PS-51067-004 (PDF)</a> | <a href="#">Product Specification PS-51067-019 (PDF)</a> |
| <a href="#">Product Specification PS-51067-005 (PDF)</a> | <a href="#">Product Specification PS-51067-022 (PDF)</a> |
| <a href="#">Product Specification PS-51067-006 (PDF)</a> | <a href="#">RoHS Certificate of Compliance (PDF)</a>     |

**Agency Certification**

CSA	LR19980
UL	E29179

**General**

Product Family	Crimp Housings
Series	<a href="#">51067</a>
Product Name	N/A

**Physical**

Circuits (maximum)	9
Color - Resin	Natural
Flammability	94V-0
Gender	Female
Glow-Wire Compliant	No
Material - Resin	Polyester
Number of Rows	1
Packaging Type	Bag
Panel Mount	No
Pitch - Mating Interface (in)	0.138 In
Pitch - Mating Interface (mm)	3.50 mm
Stackable	No
Temperature Range - Operating	-40°C to +105°C

**Material Info**

**Reference - Drawing Numbers**

Packaging Specification	SPK-51067-001
Product Specification	PS-51067-001, PS-51067-002, PS-51067-003, PS-51067-004, PS-51067-005, PS-51067-006, PS-51067-007, PS-51067-008, PS-51067-016, PS-51067-017, PS-51067-018, PS-51067-019, PS-51067-022, RPS-51067-001, RPS-51067-002, RPS-51067-003, RPS-51067-006, RPS-51067-007, RPS-51067-008, RPS-51067-014, RPS-51067-020, RPS-51067-021, RPS-51067-022, RPS-51067-024, RPS-51067-025, RPS-51067-027, RPS-51067-028, RPS-51067-030, RPS-51067-034, RPS-51067-035, RPS-51067-036, RPS-51067-037, RPS-51067-041
Sales Drawing	SD-51067-**00

<p><b>EU RoHS</b>  <b>ELV and RoHS</b>  <b>Compliant</b>  <b>REACH SVHC</b>  <b>Contains SVHC: No</b>  <b>Halogen-Free</b>  <b>Status</b>  <b>Not Halogen-Free</b></p>	<p><b>China RoHS</b></p>
--	--------------------------

**Need more information on product environmental compliance?**

Email [productcompliance@molex.com](mailto:productcompliance@molex.com)  
For a multiple part number RoHS Certificate of Compliance, [click here](#)

Please visit the [Contact Us](#) section for any non-product compliance questions.

**Search Parts in this Series**  
[51067Series](#)

**Mates With**  
[51114](#) , [53258](#) , [53259](#) , [53265](#) , [53266](#)

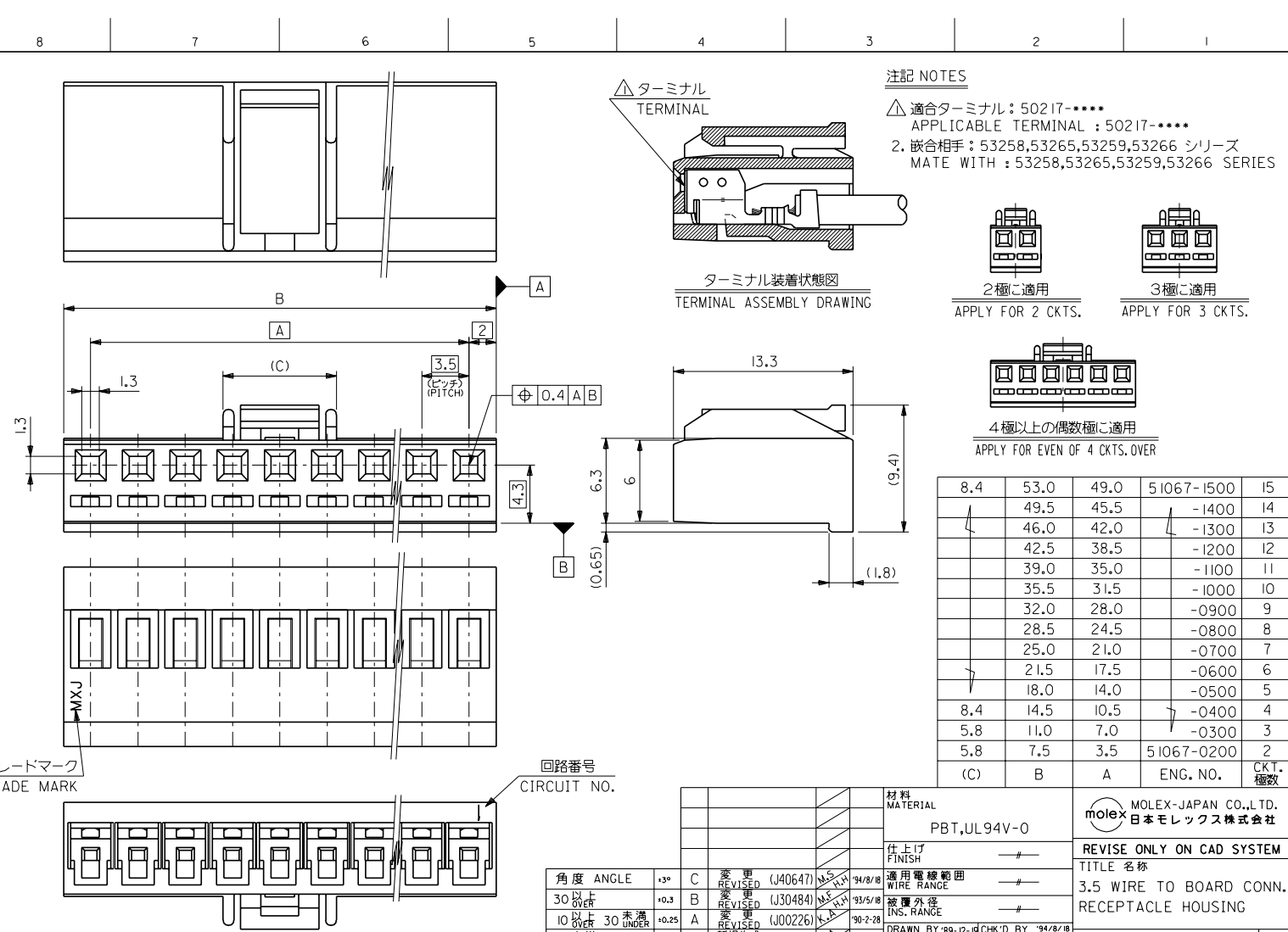
**Use With**  
[50217 Crimp Terminals](#)

This document was generated on 06/07/2010

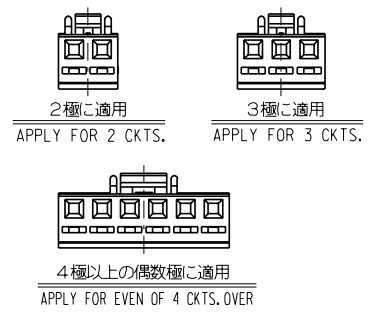
**PLEASE CHECK WWW.MOLEX.COM FOR LATEST PART INFORMATION**

DWG. NO. SD-51067-\*\*\*00

MM DIMENSIONS IN METRIC DO NOT SCALE DRAWING



注記 NOTES  
 △適合ターミナル：50217-\*\*\*\*  
 APPLICABLE TERMINAL : 50217-\*\*\*\*  
 2. 嵌合相手：53258,53265,53259,53266 シリーズ  
 MATE WITH : 53258,53265,53259,53266 SERIES



8.4	53.0	49.0	51067-1500	15
49.5	45.5	-1400	14	
46.0	42.0	-1300	13	
42.5	38.5	-1200	12	
39.0	35.0	-1100	11	
35.5	31.5	-1000	10	
32.0	28.0	-0900	9	
28.5	24.5	-0800	8	
25.0	21.0	-0700	7	
21.5	17.5	-0600	6	
18.0	14.0	-0500	5	
8.4	14.5	10.5	-0400	4
5.8	11.0	7.0	-0300	3
5.8	7.5	3.5	51067-0200	2
(C)	B	A	ENG. NO.	CKT. 極数

角度 ANGLE	±3°	C	変更 REVISED (J40647)	MS	94/8/18	材料 MATERIAL PBT,UL94V-0
30以上 OVER	±0.3	B	変更 REVISED (J30484)	MS	93/5/18	仕上げ FINISH
10以上 未過	±0.25	A	変更 REVISED (J00226)	MS	90-2-28	適用電線範囲 WIRE RANGE
10未満	±0.2	O	新規作成 PROPOSED (J91079)	MS	89-12-19	被覆外径 INS. RANGE
一般公差 GENERAL TOLERANCES						DRAWN BY '89-12-19 CHK'D BY '94/8/18 KASAKAWA H.HIRAMOTO
						APP'D BY '94/8/18 尺度 M.FUKUSHIMA SCALE

MOLEX-JAPAN CO.,LTD. 日本モレックス株式会社	
REVISE ONLY ON CAD SYSTEM	
TITLE 名称 3.5 WIRE TO BOARD CONN. RECEPTACLE HOUSING	
DWG. NO. SD-51067-***00	REV C

THIS DRAWING CONTAINS INFORMATION THAT IS PROPRIETARY TO MOLEX/JAPAN AND SHOULD NOT BE USED WITHOUT WRITTEN PERMISSION  
 本図面は日本モレックス(株)の所有する情報を含むもので、当社の許可なく複製を禁止する。  
 EN-01C(032)MXJ-32