

PLEASE CHECK WWW.MOLEX.COM FOR LATEST PART INFORMATION

Part Number: **0500138000**
Status: **Active**
Description: 2.00mm (.079") Pitch Crimp Terminal, Reel, for 51005 Housing

Documents:

| | |
|-------------------------------|----------------------------------------------------------|
| 3D Model | Product Specification PS-51005-001 (PDF) |
| Drawing (PDF) | RoHS Certificate of Compliance (PDF) |

General

| | |
|-------------------------|-----------------|
| Product Family | Crimp Terminals |
| Series | 50013 |
| Crimp Quality Equipment | Yes |
| Product Name | N/A |

Physical

| | |
|--------------------------------|--------------------------|
| Gender | Female |
| Material - Metal | Phosphor Bronze |
| Material - Plating Mating | Tin |
| Material - Plating Termination | Tin |
| Packaging Type | Reel |
| Plating min: Mating (µin) | 36 |
| Plating min: Mating (µm) | 0.90 |
| Plating min: Termination (µin) | 36 |
| Plating min: Termination (µm) | 0.90 |
| Termination Interface: Style | Crimp or Compression |
| Wire Insulation Diameter | 0.90-1.15mm (.035-.045") |
| Wire Size AWG | 24, 26, 28 |
| Wire Size mm ² | N/A |

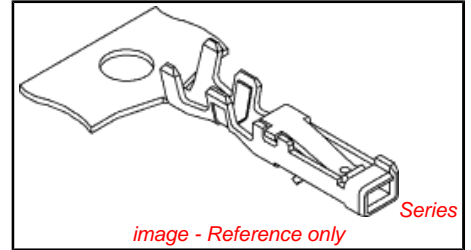
Electrical

| | |
|-------------------------------|------|
| Current - Maximum per Contact | 2A |
| Voltage - Maximum | 125V |

Material Info

Reference - Drawing Numbers

| | |
|-----------------------|--------------------------------------------|
| Product Specification | PS-51005-001, RPS-51005-001, RPS-51005-002 |
| Sales Drawing | SD-50013-001 |



EU RoHS

ELV and RoHS Compliant
REACH SVHC
Contains SVHC: No
Halogen-Free Status
Halogen-Free

China RoHS



Need more information on product environmental compliance?

Email productcompliance@molex.com
 For a multiple part number RoHS Certificate of Compliance, [click here](#)

Please visit the [Contact Us](#) section for any non-product compliance questions.

Search Parts in this Series

50013Series

Mates With

50012

Use With

Crimp Terminal 51005

Application Tooling | FAQ

Tooling specifications and manuals are found by selecting the products below. Crimp Height Specifications are then contained in the Application Tooling Specification document.

Global

| Description | Product # |
|------------------------------|------------|
| Hand Crimp Tool, UL Approved | 0638117800 |
| T2 Terminator Die | 0638515000 |
| FineAdjust™ Applicator | 0638615000 |

Japan

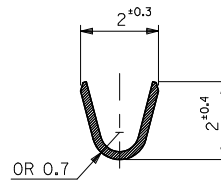
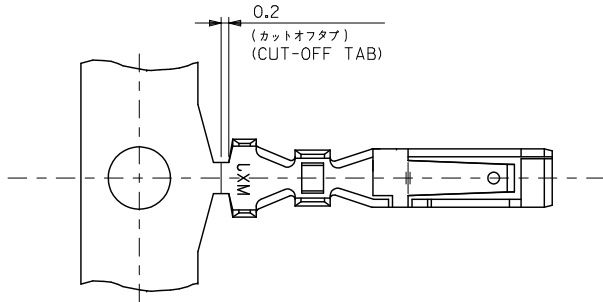
| Description | Product # |
|-----------------------------------------|------------|
| Applicator for M211A Bench Press, 24-28 | 0570453000 |

AWG, for 50012
Crimp Terminal

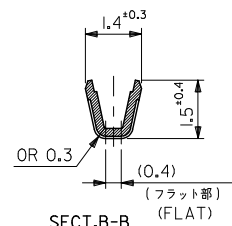
This document was generated on 04/15/2010

PLEASE CHECK WWW.MOLEX.COM FOR LATEST PART INFORMATION

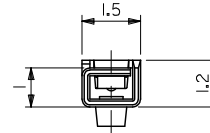
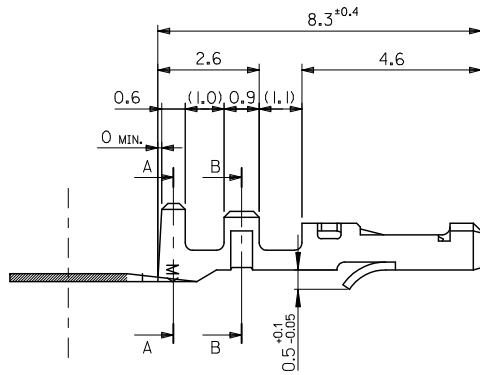
CONFIDENTIAL



SECT.A-A



SECT.B-B



注記
NOTES

- 適合ハウジング : 51005
APPLICABLE HOUSING : 51005
- 嵌合相手 : 50012
MATE WITH : 50012
- ELV 及び RoHS適合品
ELV AND RoHS COMPLIANT.

| | |
|------------|------------------------------|
| 50013-8100 | バラ状 LOOSE |
| 50013-8000 | 連鎖状 CHAIN |
| MODEL NO. | MATERIAL NO. 端子形状 FORM |

| | |
|----------------------|-------------------------------------------------------|
| 材料 MATERIAL | リン青銅 錫メッキ (t=0.2) PHOS. BRO. PRE-TINNED (t=0.2) |
| 仕上げ FINISH | — |
| 適用電線範囲 WIRE RANGE | AWG#24 ~ #28 |
| 被覆外径 INS. RANGE | φ0.9 ~ φ1.15 |

| | | |
|----------------------------|----------------------------|------------------------------------------------------------|
| REVISED | DESCRIPTION | GENERAL TOLERANCES (UNLESS SPECIFIED) |
| EC NO: J2010-0035 | DRWN:TKAGAWA01 2009/07/06 | 10 UNDER ±0.2 |
| DRWN:TKAGAWA01 2009/07/06 | CHK:CHMATSUJOTO 2009/07/06 | 10 OVER 30 UNDER ±0.25 |
| CHK:CHMATSUJOTO 2009/07/06 | APPR:NIKIITA 2009/07/06 | 30 OVER ±0.3 |
| APPR:NIKIITA 2009/07/06 | | ANGULAR ±3 ° |
| | | DRAFT WHERE APPLICABLE MUST REMAIN WITHIN DIMENSIONS |

| | | | | |
|----------------------------|-------------------|-----------------------------------------------|------------------------|---------------------------|
| DIMENSION STYLE MM ONLY | | SCALE 10:1 | DESIGN UNITS METRIC | THIRD ANGLE PROJECTION |
| DRAWN BY T. YASUI | DATE '95/08/21 | TITLE 2.0 WIRE TO WIRE CONN. CRIMP REC. | | |
| CHECKED BY H. HIRAMOTO | DATE '95/08/22 | APPROVED BY M. FUKUSHIMA '95/08/22 | | |
| MATERIAL NO. | | DOCUMENT NO. | | |
| SEE TABLE | | SD-50013-001 | | |

| | | |
|----------------------------------------------------------------------------------------------------------------------------------|--|---------------------|
| MOLEX INCORPORATED | | SHEET NO. 1 OF 1 |
| THIS DRAWING CONTAINS INFORMATION THAT IS PROPRIETARY TO MOLEX INCORPORATED AND SHOULD NOT BE USED WITHOUT WRITTEN PERMISSION | | |