

PLEASE CHECK WWW.MOLEX.COM FOR LATEST PART INFORMATION

Part Number: [0473882001](#)
Status: **Active**
Description: 2.54mm (.100") Pitch SIM Card Connector, 6 Circuits, Surface Mount, with PCB Retention Solder Tabs, with Cover Shell, Housing Height 1.90mm (.075"), with 4 Dimples, Lead Free

Documents:

[3D Model](#) [Product Specification PS-47388-201 \(PDF\)](#)
[Drawing \(PDF\)](#) [RoHS Certificate of Compliance \(PDF\)](#)

General

Product Family	Memory Card Sockets
Series	47388
Button Type	N/A
Comments	With 4 Dimples; Terminal Width 1.14mm (.045")
Component Type	Card Holder (Host)
Product Name	SIM
Type	N/A

Physical

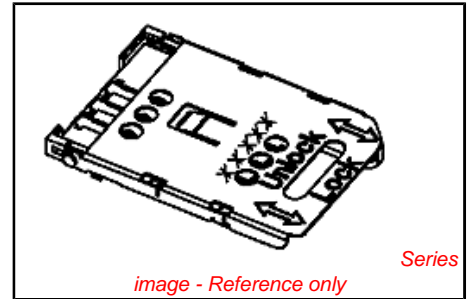
Card Detection Switch	No
Circuits (Loaded)	6
Circuits (maximum)	6
Color - Resin	Black
Durability (mating cycles max)	5,000
Ejector Button Side	No Ejector Button Present
Entry Angle	Horizontal
Keying to Mating Part	Yes
Material - Metal	Phosphor Bronze
Material - Plating Mating	Gold
Material - Plating Termination	Tin
Material - Resin	High Temperature Thermoplastic
PCB Locator	No
PCB Mounting Side	Reverse
PCB Retention	Yes
Packaging Type	Embossed Tape on Reel
Pitch - Mating Interface (in)	0.100 In
Pitch - Mating Interface (mm)	2.54 mm
Pitch - Term. Interface (in)	0.100 In
Pitch - Term. Interface (mm)	2.54 mm
Plating min: Mating (µin)	29.5
Plating min: Mating (µm)	0.75
Plating min: Termination (µin)	150
Plating min: Termination (µm)	3.80
Ports	1
Temperature Range - Operating	-40°C to +85°C
Termination Interface: Style	Surface Mount

Electrical

Current - Maximum per Contact	0.05A
Shielded	Yes
Voltage - Maximum	5V

Solder Process Data

Duration at Max. Process Temperature (seconds)	3
Lead-free Process Capability	Reflow Capable (SMT only)



EU RoHS **China RoHS**

RoHS Compliant by Exemption

REACH SVHC

Not Reviewed

Halogen-Free

Status

Halogen-Free

Need more information on product environmental compliance?

Email productcompliance@molex.com
 For a multiple part number RoHS Certificate of Compliance, [click here](#)

Please visit the [Contact Us](#) section for any non-product compliance questions.



Search Parts in this Series
[47388Series](#)

Mates With
 Standard SIM Card

Max. Cycles at Max. Process Temperature	1
Process Temperature max. C	255

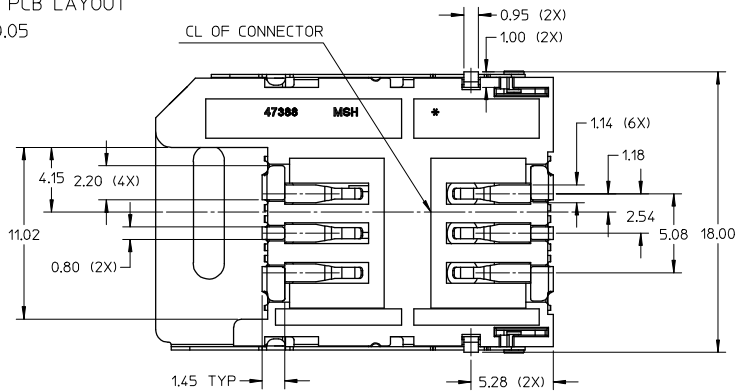
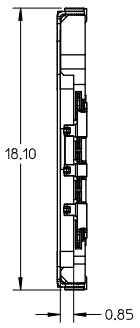
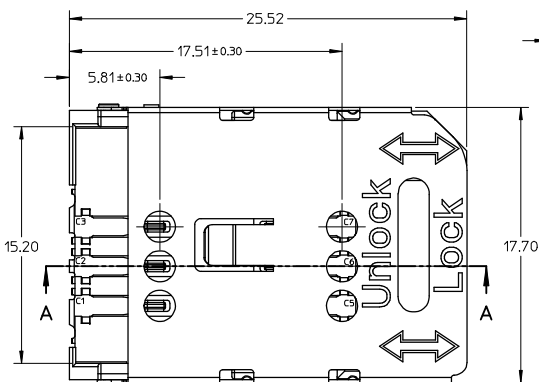
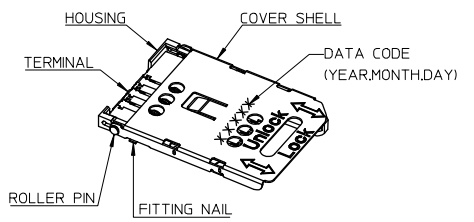
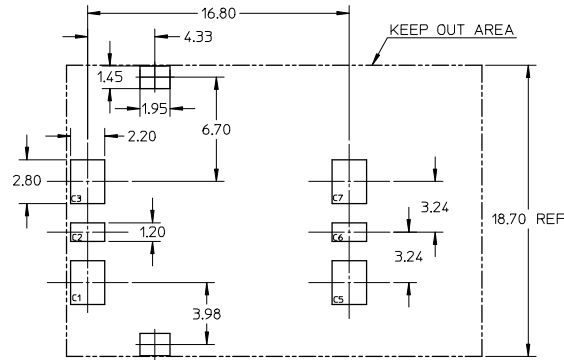
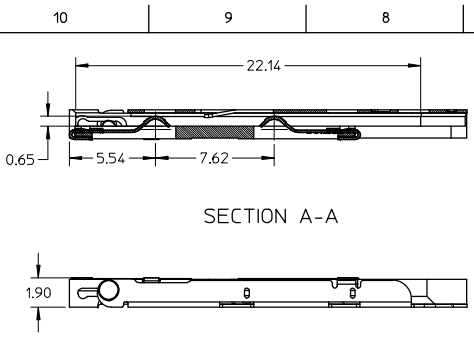
Material Info

Reference - Drawing Numbers

Product Specification	PS-47388-201
Sales Drawing	SD-47388-201

This document was generated on 04/21/2010

PLEASE CHECK WWW.MOLEX.COM FOR LATEST PART INFORMATION



NOTES:
 1.MATERIALS:
 HOUSING: LCP, GLASS FILLED, UL 94V-0, COLOR IS BLACK.
 TERMINAL:PHOSPHOR BRONZE, THICKNESS: 0.15mm.
 COVER SHELL:STAINLESS STEEL,THICKNESS: 0.2mm.
 ROLLER PIN:BRASS
 FITTING NAIL:BRASS THICKNESS 0.2mm
 2.FINISH:
 TERMINAL:
 CONTACT AREA:0.75 MICRON GOLD PLATE OVER 1.27 MICRON MIN NICKEL.
 SOLDER AREA:3.8 MICRON TIN PLATE OVER 1.27 MICRON MIN NICKEL.
 ROLLER PIN:2.54 MICRON MIN NICKEL OVERALL.
 FITTING NAIL:2.54 MICRON MIN TIN OVER 1.27 MICRO NICKEL OVERALL
 3.COPLANARITY:0.1 MAX.AMONG ALL SOLDER TAILS.
 4.PRODUCT SPECIFICATION:PS-47388-201
 5.PACKAGING INFORMATION:PK-47388-001

RELEASED EIC NO: SH2008-0464 2008/06/30 DRAWN:WANG91 2008/07/01 CHECK:YLZHU 2008/07/23 APPR:HMANG 2008/07/23 REV DESCRIPTION	QUALITY SYMBOLS	GENERAL TOLERANCES (UNLESS SPECIFIED)	DIMENSION STYLE	SCALE	DESIGN UNITS	THIRD ANGLE PROJECTION											
	$\nabla=0$ $\nabla=0$	<table border="1"> <tr><th>mm</th><th>INCH</th></tr> <tr><td>4 PLACES ±---</td><td>±---</td></tr> <tr><td>3 PLACES ±---</td><td>±---</td></tr> <tr><td>2 PLACES ±0.25</td><td>±---</td></tr> <tr><td>1 PLACE ±---</td><td>±---</td></tr> </table>	mm	INCH	4 PLACES ±---	±---	3 PLACES ±---	±---	2 PLACES ±0.25	±---	1 PLACE ±---	±---	MM ONLY	4:1	METRIC		
	mm	INCH															
	4 PLACES ±---	±---															
3 PLACES ±---	±---																
2 PLACES ±0.25	±---																
1 PLACE ±---	±---																
DRAFT WHERE APPLICABLE MUST REMAIN WITHIN DIMENSIONS	<table border="1"> <tr><td>DRAWN BY</td><td>DATE</td></tr> <tr><td>YUWANG</td><td>2007/05/28</td></tr> <tr><td>CHECKED BY</td><td>DATE</td></tr> <tr><td>XIXU</td><td>2007/05/28</td></tr> <tr><td>APPROVED BY</td><td>DATE</td></tr> <tr><td>JNCHEN</td><td>2007/05/28</td></tr> </table>	DRAWN BY	DATE	YUWANG	2007/05/28	CHECKED BY	DATE	XIXU	2007/05/28	APPROVED BY	DATE	JNCHEN	2007/05/28	TITLE	190MM SIM CARD READER CONNECTOR		
DRAWN BY	DATE																
YUWANG	2007/05/28																
CHECKED BY	DATE																
XIXU	2007/05/28																
APPROVED BY	DATE																
JNCHEN	2007/05/28																
		MATERIAL NO.	DOCUMENT NO.	SHEET NO.													
		473882001	SD-47388-201	1 OF 1													
		THIS DRAWING CONTAINS INFORMATION THAT IS PROPRIETARY TO MOLEX INCORPORATED AND SHOULD NOT BE USED WITHOUT WRITTEN PERMISSION															

tb_frame_A3_P_AM.T
 Rev. D 2004/06/28