

**PLEASE CHECK WWW.MOLEX.COM FOR LATEST PART INFORMATION**

**Part Number:** [0447690802](#)  
**Status:** **Active**  
**Overview:** [microfit\\_30](#)  
**Description:** 3.00mm (.118") Pitch Micro-Fit 3.0, BMI™ Receptacle Header, Dual Row, Vertical, with Press-fit Plastic Pegs, 0.38µm (15µ") Gold (Au) Selective, 8 Circuits

**Documents:**

<a href="#">3D Model</a>	<a href="#">Product Specification PS-44300-001 (PDF)</a>
<a href="#">Drawing (PDF)</a>	<a href="#">RoHS Certificate of Compliance (PDF)</a>

**Agency Certification**

CSA	LR19980
TUV	R72081037
UL	E29179

**General**

Product Family	PCB Receptacles
Series	<a href="#">44769</a>
Application	Board-to-Board, Wire-to-Board
Overview	<a href="#">microfit_30</a>
Product Literature Order No	USA-106
Product Name	Micro-Fit 3.0 BMI™

**Physical**

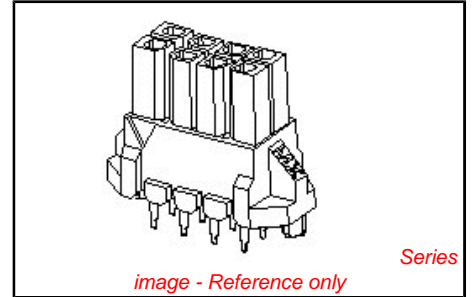
Circuits (Loaded)	8
Color - Resin	Black
Durability (mating cycles max)	30
Flammability	94V-0
Glow-Wire Compliant	No
Material - Metal	Phosphor Bronze
Material - Plating Mating	Gold
Material - Plating Termination	Tin
Material - Resin	High Temperature Thermoplastic
Number of Rows	2
Orientation	Vertical
PCB Locator	Yes
PCB Retention	Yes
PCB Thickness Recommended (in)	0.062 In
PCB Thickness Recommended (mm)	1.60 mm
Packaging Type	Tray
Pitch - Mating Interface (in)	0.118 In
Pitch - Mating Interface (mm)	3.00 mm
Plating min: Mating (µin)	15.2
Plating min: Mating (µm)	0.38
Plating min: Termination (µin)	100
Plating min: Termination (µm)	2.5
Polarized to PCB	Yes
Surface Mount Compatible (SMC)	No
Temperature Range - Operating	-40°C to +105°C
Termination Interface: Style	Through Hole

**Electrical**

Current - Maximum per Contact	5A
Voltage - Maximum	250V

**Solder Process Data**

Duration at Max. Process Temperature (seconds)	5
--	---



<b>EU RoHS</b> <b>ELV and RoHS</b> <b>Compliant</b> <b>REACH SVHC</b> <b>Contains SVHC: No</b> <b>Halogen-Free</b> <b>Status</b> <b>Not Halogen-Free</b>	<b>China RoHS</b> 
---	--

**Need more information on product environmental compliance?**

Email [productcompliance@molex.com](mailto:productcompliance@molex.com)  
 For a multiple part number RoHS Certificate of Compliance, [click here](#)

Please visit the [Contact Us](#) section for any non-product compliance questions.

**Search Parts in this Series**  
[44769Series](#)

**Mates With**  
[44428](#) , [44300](#) , [44432](#)

Lead-free Process Capability  
Max. Cycles at Max. Process Temperature  
Process Temperature max. C

Wave Capable (TH only)  
1  
260

### **Material Info**

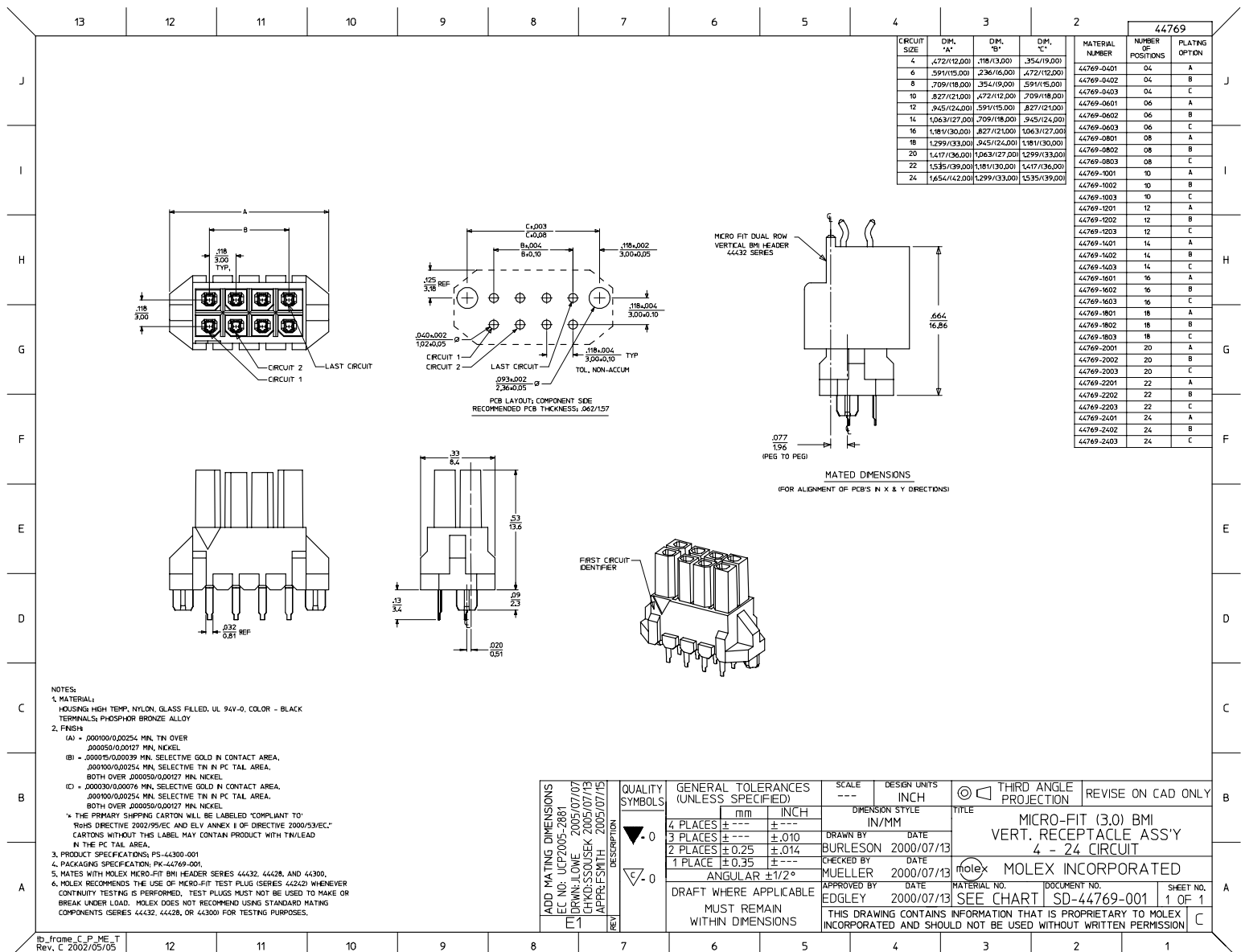
### **Reference - Drawing Numbers**

Packaging Specification  
Product Specification  
Sales Drawing

PK-44769-001  
PS-44300-001, RPS-44300-001  
SD-44769-001

This document was generated on 05/21/2010

**PLEASE CHECK [WWW.MOLEX.COM](http://WWW.MOLEX.COM) FOR LATEST PART INFORMATION**



				44769		
CIRCUIT SIZE	DIM. "A"	DIM. "B"	DIM. "C"	MATERIAL NUMBER	NUMBER OF POSITIONS	PLATING OPTION
4	.472(12.00)	.18(3.00)	.354(9.00)	44769-0401	04	A
6	.591(15.00)	.236(6.00)	.473(12.00)	44769-0402	04	B
8	.709(18.00)	.354(9.00)	.591(15.00)	44769-0403	04	C
10	.827(21.00)	.472(12.00)	.709(18.00)	44769-0601	06	A
12	.945(24.00)	.591(15.00)	.827(21.00)	44769-0602	06	B
14	1.063(27.00)	.709(18.00)	.945(24.00)	44769-0603	06	C
16	1.181(30.00)	.827(21.00)	1.063(27.00)	44769-0801	08	A
18	1.299(33.00)	.945(24.00)	1.181(30.00)	44769-0802	08	B
20	1.417(36.00)	1.063(27.00)	1.299(33.00)	44769-0803	08	C
22	1.535(39.00)	1.181(30.00)	1.417(36.00)	44769-1001	10	A
24	1.654(42.00)	1.299(33.00)	1.535(39.00)	44769-1002	10	B
				44769-1003	10	C
				44769-1201	12	A
				44769-1202	12	B
				44769-1203	12	C
				44769-1401	14	A
				44769-1402	14	B
				44769-1403	14	C
				44769-1601	16	A
				44769-1602	16	B
				44769-1603	16	C
				44769-1801	18	A
				44769-1802	18	B
				44769-1803	18	C
				44769-2001	20	A
				44769-2002	20	B
				44769-2003	20	C
				44769-2201	22	A
				44769-2202	22	B
				44769-2203	22	C
				44769-2401	24	A
				44769-2402	24	B
				44769-2403	24	C

NOTES:  
 1. MATERIAL:  
 HOUSING: HIGH TEMP. NYLON, GLASS FILLED, UL 94V-0, COLOR - BLACK  
 TERMINALS: PHOSPHOR BRONZE ALLOY  
 2. FINISH:  
 (A) = .000100/0.00254 MIN. TIN OVER  
 .00050/0.00127 MIN. NICKEL  
 (B) = .000015/0.00039 MIN. SELECTIVE GOLD IN CONTACT AREA,  
 .000100/0.00254 MIN. SELECTIVE TIN IN PC TAIL AREA,  
 BOTH OVER .000050/0.00127 MIN. NICKEL  
 (C) = .000030/0.00076 MIN. SELECTIVE GOLD IN CONTACT AREA,  
 .000100/0.00254 MIN. SELECTIVE TIN IN PC TAIL AREA,  
 BOTH OVER .000050/0.00127 MIN. NICKEL  
 \* THE PRIMARY SHIPPING CARTON WILL BE LABELED COMPLIANT TO  
 ROHS DIRECTIVE 2002/95/EC AND ELY ANNEX II OF DIRECTIVE 2000/53/EC  
 CARTONS WITHOUT THIS LABEL MAY CONTAIN PRODUCT WITH TIN/LEAD  
 IN THE PC TAIL AREA.  
 3. PRODUCT SPECIFICATIONS: PS-44300-001  
 4. PACKAGING SPECIFICATION: PK-44769-001.  
 5. MATES WITH MOLEX MICRO-FIT BMI HEADER SERIES 44432, 44428, AND 44300.  
 6. MOLEX RECOMMENDS THE USE OF MICRO-FIT TEST PLUG (SERIES 44242) WHENEVER  
 CONTINUITY TESTING IS PERFORMED. TEST PLUGS MUST NOT BE USED TO MAKE OR  
 BREAK UNDER LOAD. MOLEX DOES NOT RECOMMEND USING STANDARD MATING  
 COMPONENTS (SERIES 44432, 44428, OR 44300) FOR TESTING PURPOSES.

ADD MATING DIMENSIONS EC NO: UCP2005-2881 DRWN: JLOWE 2005/07/13 CHKD: SMOUSEK 2005/07/13 APPR: F SMITH 2005/07/13	QUALITY SYMBOLS -0 -0	GENERAL TOLERANCES (UNLESS SPECIFIED)	SCALE ---	DESIGN UNITS INCH	THIRD ANGLE PROJECTION	REVISE ON CAD ONLY																	
		<table border="1"> <tr><th colspan="2">mm</th><th colspan="2">INCH</th></tr> <tr><td>4 PLACES</td><td>± .010</td><td>± .010</td><td>± .010</td></tr> <tr><td>3 PLACES</td><td>± .015</td><td>± .015</td><td>± .015</td></tr> <tr><td>2 PLACES</td><td>± .025</td><td>± .025</td><td>± .025</td></tr> <tr><td>1 PLACE</td><td>± .035</td><td>± .035</td><td>± .035</td></tr> </table>	mm		INCH		4 PLACES	± .010	± .010	± .010	3 PLACES	± .015	± .015	± .015	2 PLACES	± .025	± .025	± .025	1 PLACE	± .035	± .035	± .035	DIMENSION STYLE IN/MM
mm		INCH																					
4 PLACES	± .010	± .010	± .010																				
3 PLACES	± .015	± .015	± .015																				
2 PLACES	± .025	± .025	± .025																				
1 PLACE	± .035	± .035	± .035																				
		DRAFT WHERE APPLICABLE	DRAWN BY BURLERSON	DATE 2000/07/13	CHECKED BY MUELLER	DATE 2000/07/13																	
		MUST REMAIN WITHIN DIMENSIONS	APPROVED BY EDGLEY	DATE 2000/07/13	MATERIAL NO. SEE CHART	DOCUMENT NO. SD-44769-001																	
			THIS DRAWING CONTAINS INFORMATION THAT IS PROPRIETARY TO MOLEX INCORPORATED AND SHOULD NOT BE USED WITHOUT WRITTEN PERMISSION																				