

**PLEASE CHECK WWW.MOLEX.COM FOR LATEST PART INFORMATION**

**Part Number:** [0444761111](#)  
**Status:** **Active**  
**Overview:** [minifit\\_plus\\_hcs](#)  
**Description:** Mini-Fit HCS™ Crimp Terminal 44476, 18-20 AWG, Reel, Copper (Cu) Alloy, Tin (Sn)

**Documents:**

[Drawing \(PDF\)](#) [RoHS Certificate of Compliance \(PDF\)](#)  
[Product Specification PS-44476-001 \(PDF\)](#)

**General**

Product Family	Crimp Terminals
Series	44476
Comments	High Current
Crimp Quality Equipment	Yes
Overview	<a href="#">minifit_plus_hcs</a>
Product Name	Mini-Fit HCS™

**Physical**

Gender	Female
Material - Metal	High Performance Alloy (HPA)
Material - Plating Mating	Tin
Material - Plating Termination	Tin
Packaging Type	Reel
Plating min: Mating (µin)	100
Plating min: Mating (µm)	2.5
Termination Interface: Style	Crimp or Compression
Wire Insulation Diameter	1.30-3.10mm (.051-.122")
Wire Size AWG	18, 20
Wire Size mm²	N/A

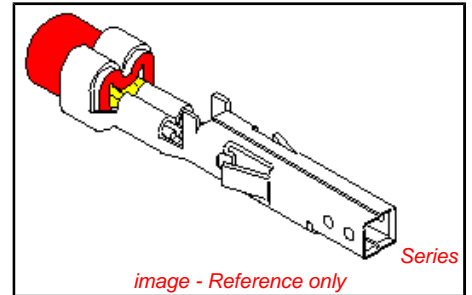
**Electrical**

Current - Maximum per Contact	11A
-------------------------------	-----

**Material Info**

**Reference - Drawing Numbers**

Packaging Specification	PK-44476-001
Product Specification	PS-44476-001, RPS-44476-001
Sales Drawing	SD-44476-****



**EU RoHS**

**ELV and RoHS Compliant**  
**REACH SVHC Contains SVHC: No**  
**Halogen-Free Status**  
**Halogen-Free**

**China RoHS**



**Need more information on product environmental compliance?**

Email [productcompliance@molex.com](mailto:productcompliance@molex.com)  
 For a multiple part number RoHS Certificate of Compliance, [click here](#)

Please visit the [Contact Us](#) section for any non-product compliance questions.

**Search Parts in this Series**

44476Series

**Application Tooling | FAQ**

*Tooling specifications and manuals are found by selecting the products below. Crimp Height Specifications are then contained in the Application Tooling Specification document.*

**Global**

Description	Product #
Hand Crimp Tool for Mini-Fit™ Jr. Male and Female Crimp Terminals, 16-24 AWG	<a href="#">0638190900</a>
Extraction Tool	<a href="#">0011030044</a>
T2 Terminator	<a href="#">0639102900</a>
Tooling Die	
FineAdjust™	<a href="#">0639015600</a>
Applicator for Mini-Fit Jr.™, Mini-Fit HCS™ Crimp Terminals,	

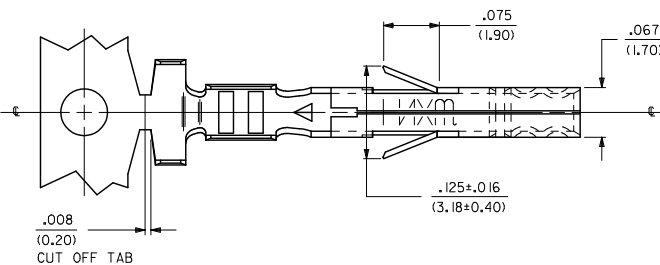
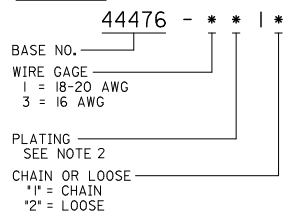
18-24 AWG and smaller insulation T2 Terminator Die	<a href="#">0639102600</a>
FineAdjust™ Applicator	<a href="#">0639002600</a>
FineAdjust™ Applicator, Small Insulation	<a href="#">0639002900</a>

This document was generated on 05/27/2010

**PLEASE CHECK [WWW.MOLEX.COM](http://WWW.MOLEX.COM) FOR LATEST PART INFORMATION**

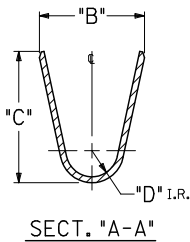
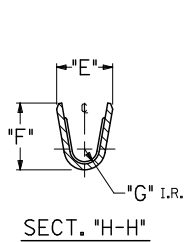
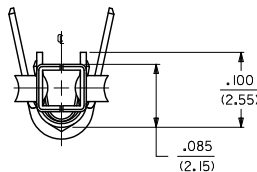
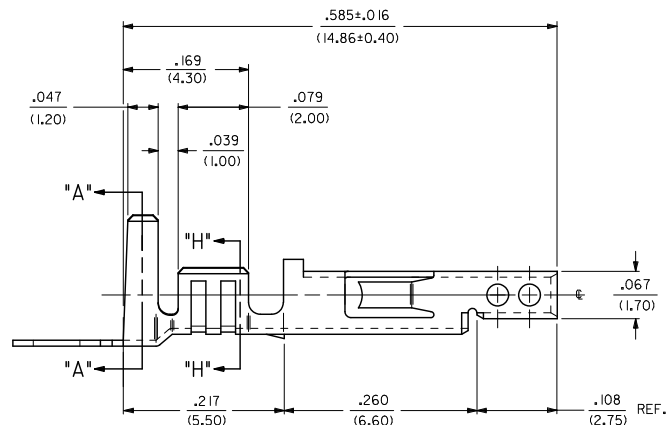
ITEM NO.	FORM	WIRE GAGE	QUANTITY PER REEL	DIM. "B"	DIM. "C"	DIM. "D"	DIM. "E"	DIM. "F"	DIM. "G"
44476-1111	CHAIN	18-20 GA.	4,000	.142±.012	.177±.016	.035	.075±.012	.091±.016	.020
44476-1112	LOOSE			(3.60±0.30)	(4.50±0.40)	(0.90)	(1.90±0.30)	(2.30±0.40)	(0.50)
44476-3111	CHAIN	16 GA.	4,000	.142±.012	.177±.016	.035	.091±.012	.106±.016	.024
44476-3112	LOOSE			(3.60±0.30)	(4.50±0.40)	(0.90)	(2.30±0.30)	(2.70±0.40)	(0.60)

**LEGEND:**



**NOTES:**

- MATERIAL: COPPER ALLOY, .008/(.203) THICK.
- FINISH:
  - \*1 = POSTPLATE .000100/(.00254) MIN. BRIGHT TIN OVER .000050/(0.00127) MIN. NICKEL OVERALL.
  - \*THE PRIMARY SHIPPING CARTON WILL BE LABELED "COMPLIANT TO RoHS DIRECTIVE 2002/95/EC AND ELV ANNEX II OF DIRECTIVE 2000/53/EC." CARTONS WITHOUT THIS LABEL MAY CONTAIN PRODUCT WITH TIN-LEAD PLATING.
- PRODUCT SPECIFICATION AND PROCESSING PARAMETERS: SEE PS-44476-001.
- PACKAGING SPECIFICATION: PK-44476-001 FOR CHAIN TERMINALS  
PK-5556-003 FOR LOOSE TERMINALS
- MATES WITH 44478 MALE TERMINAL AND 43810, 44068, 44472, 44473, 44474, 42404, 5569 AND 30070 SERIES CONNECTORS.
- TERMINAL FOR USE WITH 5557, 30067 & 42474 SERIES HOUSINGS.
- ITEM NUMBERS PRECEDED BY AN "X" IN THE CHART ARE NOT AVAILABLE.



<b>CHANGED NOTE 4</b> EC NO. UCP2010-0471 DRAWN: JAGUILAR 2009/12/23 CHKD: BELL 2009/12/23 APPROV: SMITH 2009/12/28 REV. DESCRIPTION	QUALITY SYMBOLS	GENERAL TOLERANCES (UNLESS SPECIFIED)	DIMENSION STYLE IN/MM	SCALE 10:1	DESIGN UNITS METRIC	THIRD ANGLE PROJECTION	
	$\nabla=0$ $\nabla=0$	4 PLACES ±--- ±--- 3 PLACES ±--- ±.010 2 PLACES ±0.25 ±.014 1 PLACE ±0.38 ±--- ANGULAR ±1/2°	DRAWN BY GEP DATE 1992/09/14 CHECKED BY RJJ DATE 1992/09/14 APPROVED BY RJJ DATE 1992/09/14	TITLE	TERMINAL, FEMALE, CRIMP MINI-FIT H.C.S. SERIES BLANK-PLATE-FORM		
				MATERIAL NO. SEE CHART	DOCUMENT NO. SD-44476-****	MOLEX INCORPORATED	
				DRAFT WHERE APPLICABLE MUST REMAIN WITHIN DIMENSIONS	THIS DRAWING CONTAINS INFORMATION THAT IS PROPRIETARY TO MOLEX INCORPORATED AND SHOULD NOT BE USED WITHOUT WRITTEN PERMISSION		