

PLEASE CHECK WWW.MOLEX.COM FOR LATEST PART INFORMATION

Part Number: [0444720855](#)
Status: **Active**
Description: 4.20mm (.165") Pitch Mini-Fit HCS™ Header, Dual Row, Vertical, without Snap-in Plastic Peg PCB Lock, 8 Circuits, PA Polyamide Nylon 6/6 94V-0, without Drain Holes

Documents:

3D Model	Product Specification PS-44476-001 (PDF)
Drawing (PDF)	RoHS Certificate of Compliance (PDF)
Packaging Specification (PDF)	

Agency Certification

CSA	LR19980
UL	E29179

General

Product Family	PCB Headers
Series	44472
Application	Wire-to-Board
Comments	Square Pin Solder Type
Product Name	Mini-Fit HCS™

Physical

Breakaway	No
Circuits (Loaded)	8
Circuits (maximum)	8
Color - Resin	Natural (White)
Durability (mating cycles max)	30
Flammability	94V-0
Glow-Wire Compliant	No
Material - Metal	High Performance Alloy (HPA)
Material - Plating Mating	Tin
Material - Plating Termination	Tin
Material - Resin	Nylon
Number of Rows	2
Orientation	Vertical
PCB Locator	Yes
PCB Retention	None
PCB Thickness Recommended (in)	0.070 In
PCB Thickness Recommended (mm)	1.80 mm
Packaging Type	Tray
Pitch - Mating Interface (in)	0.165 In
Pitch - Mating Interface (mm)	4.20 mm
Plating min: Mating (µin)	100
Plating min: Mating (µm)	2.50
Plating min: Termination (µin)	100
Plating min: Termination (µm)	2.50
Polarized to PCB	Yes
Shrouded	Partial
Stackable	No
Surface Mount Compatible (SMC)	No
Temperature Range - Operating	-40°C to +105°C
Termination Interface: Style	Through Hole

Electrical

Current - Maximum per Contact	11A
Voltage - Maximum	600V

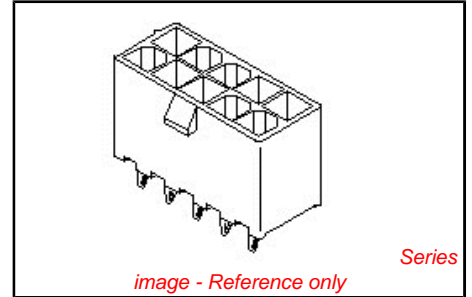


image - Reference only

EU RoHS ELV and RoHS Compliant REACH SVHC Contains SVHC: No Halogen-Free Status Halogen-Free	China RoHS
---	-----------------------

Need more information on product environmental compliance?

Email productcompliance@molex.com
 For a multiple part number RoHS Certificate of Compliance, [click here](#)

Please visit the [Contact Us](#) section for any non-product compliance questions.

Search Parts in this Series
44472Series

Mates With
5557d

Solder Process Data

Duration at Max. Process Temperature (seconds)	5
Lead-free Process Capability	Wave Capable (TH only)
Max. Cycles at Max. Process Temperature	1
Process Temperature max. C	260

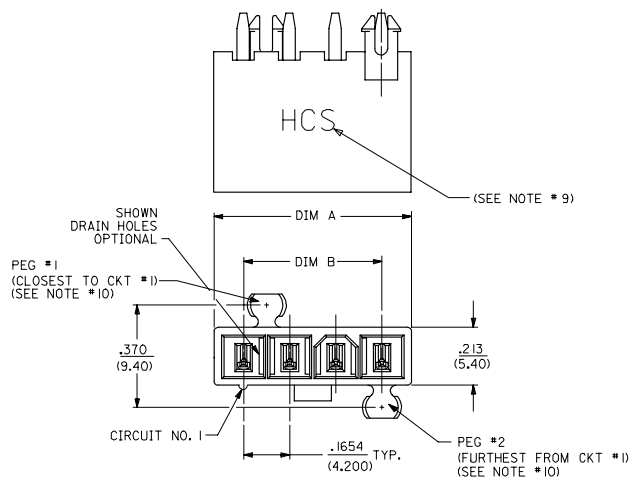
Material Info**Reference - Drawing Numbers**

Product Specification	PS-44476-001, RPS-44476-001
Sales Drawing	SDA-44472-****

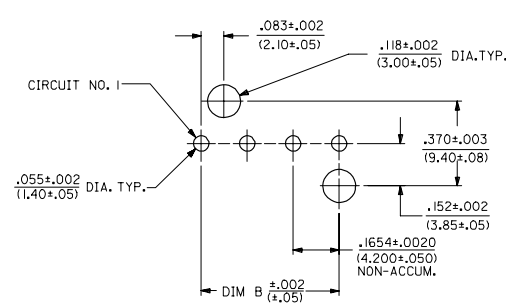
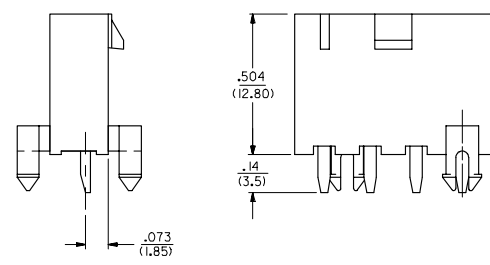
This document was generated on 03/19/2010

PLEASE CHECK WWW.MOLEX.COM FOR LATEST PART INFORMATION

CKT SIZE	DIM A	DIM B
4	.709 (18.00)	.496 (12.60)
5	.874 (22.20)	.661 (16.80)
6	1.039 (26.40)	.827 (21.00)
7	1.205 (30.60)	.992 (25.20)
8	1.370 (34.80)	1.157 (29.40)
9	1.535 (39.00)	1.323 (33.60)
10	1.701 (43.20)	1.488 (37.80)
11	1.866 (47.40)	1.654 (42.00)
12	2.031 (51.60)	1.819 (46.20)



- NOTES:
- MATERIALS:
HOUSING:
*1"-NYLON 6/6, UL94 V-2, COLOR: NATURAL
*2"-NYLON 6/6, UL94 V-0, COLOR: NATURAL
*3"-NYLON 6/6, UL94 V-2, COLOR: BLACK
TERMINALS:
COPPER ALLOY
 - TERMINAL PLATING:
*T"=.000100/(0.00254) MIN. BRIGHT TIN OVER
.000050/(0.00127) MIN. NICKEL
*W"=.000030/(0.00076) MIN. SELECT GOLD AND
.000100/(0.00254) MIN. SELECT MATTE TIN
OVER .000050/(0.00127) MIN. NICKEL OVERALL
*3"=.000100/(0.00254) MIN. MATTE TIN OVER
.000050/(0.00127) MIN. NICKEL
*THE PRIMARY SHIPPING CARTON WILL BE LABELED
"ELV AND ROHS COMPLIANT", CARTONS WITHOUT THIS
LABEL MAY CONTAIN PRODUCT WITH TIN-LEAD PLATING.
 - PRODUCT SPECIFICATION: PS-44476-001
 - PACKAGING: SEE CHARTS
 - PART MATES WITH MINI-FIT JR. RECEPTACLE NO. 5557.
 - PART IS NOT DESIGNED FOR CURRENT SHARING.
 - PARTS ARE NOT TO BE MATED OR UN-MATED WHILE CIRCUITS ARE LIVE.
 - 44472-2470 ONLY FOR WIDER LOCKING RAMP.
 - PARTS PRODUCED AFTER JULY 1, 2004 WILL HAVE "HCS" MARKING INSTEAD OF BLACK STRIPE.
 - SEE CHART FOR PARTS WITH PEGS REMOVED.
 - PART CONFORMS TO CLASS 'B' REQUIREMENTS OF COSMETIC SPECIFICATION PS-45499-002.

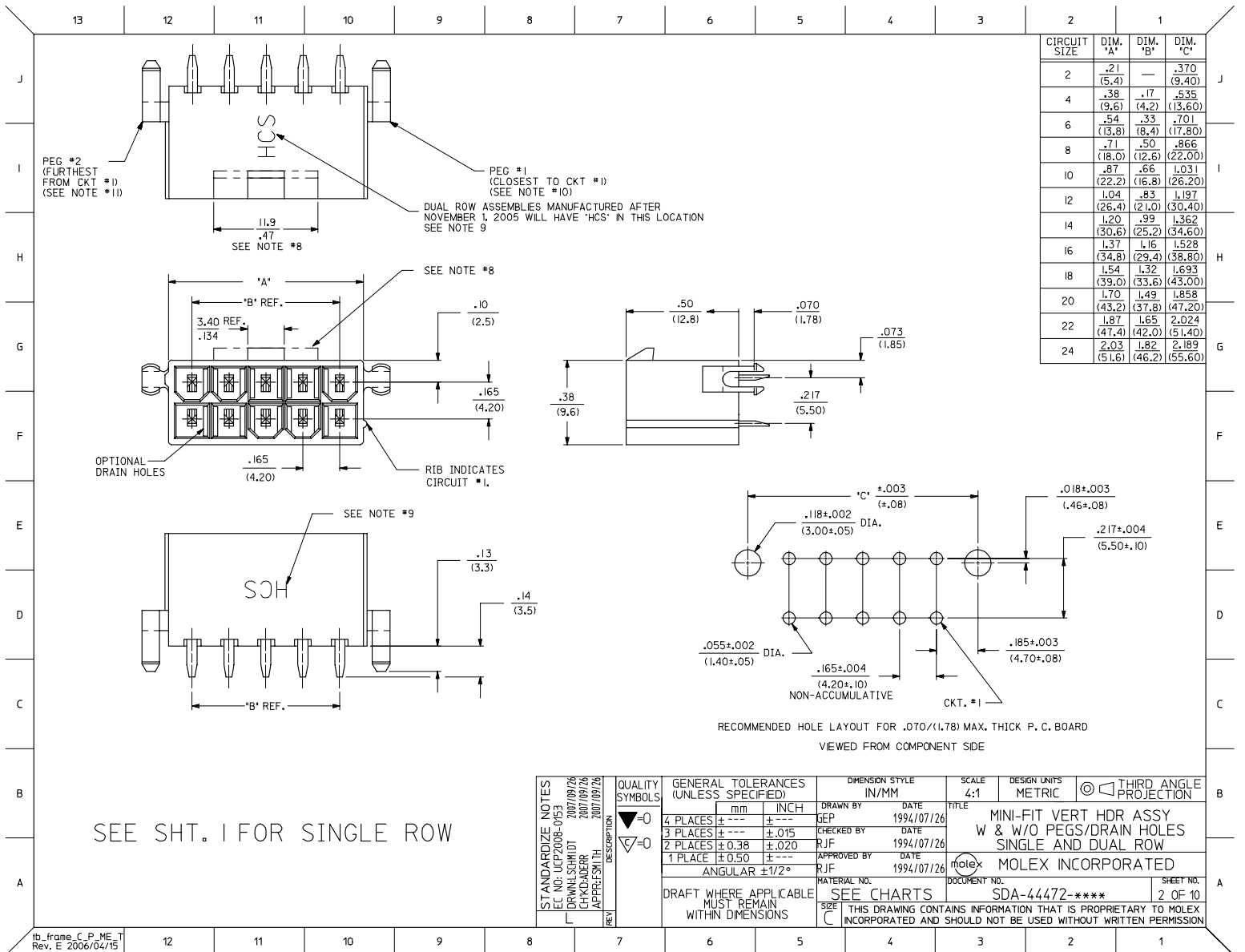


10	L
9	L
8	L
7	L
6	L
5	L
4	L
3	L
2	L
1	L
SHT	REV

LEGEND:
44472 - ** **
CIRCUIT SIZE
(04-12 FOR SINGLE ROW)
(02-24 FOR DUAL ROW)
ASSEMBLY VERSION
(01 THRU 49 FOR SINGLE ROW)
(50 THRU 99 FOR DUAL ROW)

SEE SHT. 2 FOR DUAL ROW
• THE CHART FOR SINGLE ROW PRODUCT IS ON PAGE 7

STANDARDIZE NOTES	QUALITY SYMBOLS	GENERAL TOLERANCES (UNLESS SPECIFIED)		DIMENSION STYLE	SCALE	DESIGN UNITS	THIRD ANGLE PROJECTION
		mm	INCH	IN/MM	4:1	METRIC	
EC NO: UCP2008-0163 DRW:LSCHMIDT 2007/09/26 CHK:RADER 2007/09/26 APPR:SMITH 2007/09/26 REV DESCRIPTION	▽=0	4 PLACES ±---	±---	DRAWN BY	DATE	TITLE	MINI-FIT VERT HDR ASSY W & W/O PEGS/DRAIN HOLES SINGLE AND DUAL ROW MOLEX INCORPORATED
	▽=0	3 PLACES ±---	±.015	CHECKED BY	DATE		
		2 PLACES ±0.38	±.020	APPROVED BY	DATE		
		1 PLACE ±0.50	±---	R/JF	1994/07/25		
		ANGULAR ±1/2°					
		DRAFT WHERE APPLICABLE MUST REMAIN WITHIN DIMENSIONS		MATERIAL NO.	DOCUMENT NO.	SHEET NO.	
				SEE CHARTS	SDA-44472-****	1 OF 10	
				THIS DRAWING CONTAINS INFORMATION THAT IS PROPRIETARY TO MOLEX INCORPORATED AND SHOULD NOT BE USED WITHOUT WRITTEN PERMISSION			



CIRCUIT SIZE	DIM. 'A'	DIM. 'B'	DIM. 'C'
2	.21 (5.4)	—	.370 (9.40)
4	.38 (9.6)	.17 (4.2)	.535 (13.60)
6	.54 (13.8)	.33 (8.4)	.701 (17.80)
8	.71 (18.0)	.50 (12.6)	.866 (22.00)
10	.87 (22.2)	.66 (16.8)	1.031 (26.20)
12	1.04 (26.4)	.83 (21.0)	1.197 (30.40)
14	1.20 (30.6)	.99 (25.2)	1.362 (34.60)
16	1.37 (34.8)	1.16 (29.4)	1.528 (38.80)
18	1.54 (39.0)	1.32 (33.6)	1.693 (43.00)
20	1.70 (43.2)	1.49 (37.8)	1.858 (47.20)
22	1.87 (47.4)	1.65 (42.0)	2.024 (51.40)
24	2.03 (51.6)	1.82 (46.2)	2.189 (55.60)

SEE SHT. I FOR SINGLE ROW

STANDARDIZE NOTES EC NO. UCP2008-0163 DRAWN/SCHMIDT 2007/09/26 CHK/ADDER 2007/09/26 APPROV/SWITH 2007/09/26	QUALITY SYMBOLS ▽=0 ▽=0	GENERAL TOLERANCES (UNLESS SPECIFIED)	DIMENSION STYLE IN/MM	SCALE 4:1	DESIGN UNITS METRIC	THIRD ANGLE PROJECTION	
		4 PLACES ± --- ± --- 3 PLACES ± --- ± .015 2 PLACES ± 0.38 ± .020 1 PLACE ± 0.50 ± --- ANGULAR ±1/2°	DRAWN BY SEP	DATE 1994/07/26	TITLE MINI-FIT VERT HDR ASSY W & W/O PEGS/DRAIN HOLES SINGLE AND DUAL ROW		
		DRAFT WHERE APPLICABLE MUST REMAIN WITHIN DIMENSIONS	CHECKED BY R/JF	DATE 1994/07/26	APPROVED BY R/JF	DATE 1994/07/26	MATERIAL NO. SEE CHARTS
							DOCUMENT NO. SDA-44472-****

	13	12	11	10	9	8	7	6	5	4	3	2	1
J	PLATING: 1 (SEE NOTE 2) DRAINS: WITHOUT DRAIN HOLES PEGS: WITH PEGS MAT'L: 94V-2 [NATURAL] PACKAGING: PK-44472-001			PLATING: 1 (SEE NOTE 2) DRAINS: WITHOUT DRAIN HOLES PEGS: WITH PEGS MAT'L: 94V-O [NATURAL] PACKAGING: PK-44472-001			PLATING: 1 (SEE NOTE 2) DRAINS: WITH DRAIN HOLES PEGS: WITH PEGS MAT'L: 94V-2 [NATURAL] PACKAGING: PK-44472-001			PLATING: 1 (SEE NOTE 2) DRAINS: WITH DRAIN HOLES PEGS: WITH PEGS MAT'L: 94V-O [NATURAL] PACKAGING: PK-44472-001			
I	ITEM NO.		CKTS	ITEM NO.		CKTS	ITEM NO.		CKTS	ITEM NO.		CKTS	
	44472-0250		2	44472-0251		2	44472-0252		2	44472-0253		2	
	44472-0450		4	44472-0451		4	44472-0452		4	44472-0453		4	
	44472-0650		6	44472-0651		6	44472-0652		6	44472-0653		6	
	44472-0850		8	44472-0851		8	44472-0852		8	44472-0853		8	
	44472-1050		10	44472-1051		10	44472-1052		10	44472-1053		10	
	44472-1250		12	44472-1251		12	44472-1252		12	44472-1253		12	
	44472-1450		14	44472-1451		14	44472-1452		14	44472-1453		14	
	44472-1650		16	44472-1651		16	44472-1652		16	44472-1653		16	
H	44472-1850		18	44472-1851		18	44472-1852		18	44472-1853		18	
	44472-2050		20	44472-2051		20	44472-2052		20	44472-2053		20	
	44472-2250		22	44472-2251		22	44472-2252		22	44472-2253		22	
	44472-2450		24	44472-2451		24	44472-2452		24	44472-2453		24	

G	PLATING: 1 (SEE NOTE 2) DRAINS: WITHOUT DRAIN HOLES PEGS: WITHOUT PEGS MAT'L: 94V-2 [NATURAL] PACKAGING: PK-44472-001			PLATING: 1 (SEE NOTE 2) DRAINS: WITHOUT DRAIN HOLES PEGS: WITHOUT PEGS MAT'L: 94V-O [NATURAL] PACKAGING: PK-44472-001		
F	ITEM NO.	HOUSING NO.	CKTS	ITEM NO.		CKTS
	44472-0254		2	44472-0255		2
	44472-0454		4	44472-0455		4
	44472-0654		6	44472-0655		6
	44472-0854		8	44472-0855		8
	44472-1054		10	44472-1055		10
	44472-1254		12	44472-1255		12
	44472-1454		14	44472-1455		14
	44472-1654		16	44472-1655		16
	44472-1854		18	44472-1855		18
	44472-2054		20	44472-2055		20
	44472-2254		22	44472-2255		22
	44472-2454		24	44472-2455		24

• ITEMS PRECEDED BY AN *X* ARE NOT AVAILABLE.

PLATING NOTE EC NO: UCP2008-0163 DRWLSCHMIDT 2007/09/26 CHKADDER 2007/09/26 APPRESMITH 2007/09/26 REV DESCRIPTION	QUALITY SYMBOLS	GENERAL TOLERANCES (UNLESS SPECIFIED)	DIMENSION STYLE	SCALE	DESIGN UNITS	THIRD ANGLE PROJECTION
	▽=0	4 PLACES ± --- ± --- 3 PLACES ± --- ± --- 2 PLACES ± --- ± --- 1 PLACE ± --- ± ---	mm INCH	IN/MM	METRIC	
	▽=0	ANGULAR ±1/2°				
		DRAFT WHERE APPLICABLE MUST REMAIN WITHIN DIMENSIONS	SEE CHART			
			DRAWN BY	DATE	TITLE	
			LEM	1999/02/22	MINI-FIT VERT HDR ASSY W & W/O PEGS/DRAIN HOLES SINGLE AND DUAL ROW	
			CHECKED BY	DATE		
			MAB	1999/02/22		
			APPROVED BY	DATE		
			RRE	1999/02/22		
			MATERIAL NO.	DOCUMENT NO.		
				SDA-44472-****		
			SIZE			SHEET NO.
			C			3 OF 10
			THIS DRAWING CONTAINS INFORMATION THAT IS PROPRIETARY TO MOLEX INCORPORATED AND SHOULD NOT BE USED WITHOUT WRITTEN PERMISSION			