

PLEASE CHECK WWW.MOLEX.COM FOR LATEST PART INFORMATION

Part Number: [0428788408](#)
Status: **Active**
Overview: [modular_plugs_jacks](#)
Description: Modular Jack, Vertical, Low Profile, 8/8, Panel Stops

Documents:

[3D Model](#) [Product Specification PS-42878 \(PDF\)](#)
[Drawing \(PDF\)](#) [RoHS Certificate of Compliance \(PDF\)](#)

Agency Certification

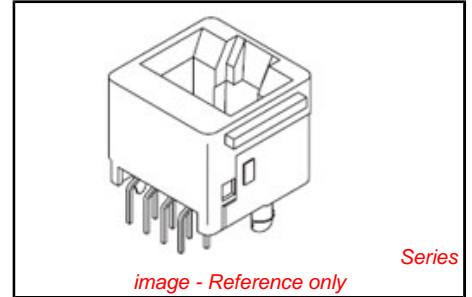
CSA LR19980
 UL E107635

General

Product Family Modular Jacks/Plugs
 Series [42878](#)
 Comments Flush Mount|Flangeless|2 PCB Thick
 Component Type PCB Jack
 Magnetic No
 Overview [modular_plugs_jacks](#)
 Performance Category 3
 Power over Ethernet (PoE) N/A
 Product Name RJ45

Physical

Boot Color N/A
 Color - Resin Black
 Durability (mating cycles max) 500
 Flammability 94V-0
 Inverted / Top Latch N/A
 Keying to Mating Part None
 Lightpipes/LEDs None
 Material - Metal Phosphor Bronze
 Material - Plating Mating Gold
 Material - Plating Termination Tin
 Material - Resin Polyester
 Orientation Vertical (Top Entry)
 PCB Locator Yes
 PCB Retention Yes
 PCB Thickness Recommended (in) 0.062 In
 PCB Thickness Recommended (mm) 1.57 mm
 Packaging Type Tray
 Panel Mount With Flange
 Pitch - Mating Interface (in) 0.040 In
 Pitch - Mating Interface (mm) 1.02 mm
 Pitch - Term. Interface (in) 0.050 In
 Pitch - Term. Interface (mm) 1.27 mm
 Plating min: Mating (µin) 50
 Plating min: Mating (µm) 1.25
 Plating min: Termination (µin) 100
 Plating min: Termination (µm) 2.5
 Ports 1
 Positions / Loaded Contacts 8/8
 Surface Mount Compatible (SMC) No
 Temperature Range - Operating -40°C to +85°C
 Termination Interface: Style Through Hole



EU RoHS **China RoHS**

ELV and RoHS Compliant
REACH SVHC
Contains SVHC: No
Halogen-Free Status
Not Halogen-Free



Need more information on product environmental compliance?

Email productcompliance@molex.com
 For a multiple part number RoHS Certificate of Compliance, [click here](#)

Please visit the [Contact Us](#) section for any non-product compliance questions.

Search Parts in this Series
[42878Series](#)

Mates With
 FCC 68 Plugs

Waterproof / Dustproof No
Wire/Cable Type N/A

Electrical

Current - Maximum per Contact 1.5A
Grounding to PCB No
Grounding to Panel None
Shielded No
Voltage - Maximum 150V AC (RMS)

Solder Process Data

Duration at Max. Process Temperature (seconds) 5
Lead-free Process Capability Wave Capable (TH only)
Max. Cycles at Max. Process Temperature 1
Process Temperature max. C 235

Material Info

Reference - Drawing Numbers

Packaging Specification PK-42878-492
Product Specification PS-42878
Sales Drawing SDA-42878-****
Test Summary TS-42878-001

This document was generated on 06/07/2010

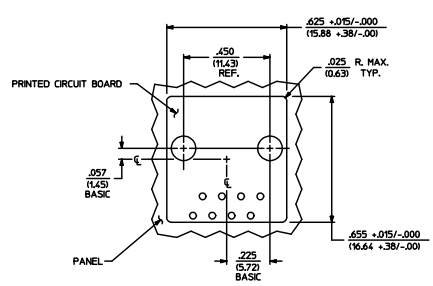
PLEASE CHECK WWW.MOLEX.COM FOR LATEST PART INFORMATION

MODULAR JACK CHARACTERISTICS LEGEND									
EXTERNAL CONNECTOR BODY DIMENSIONS (SEE NOTES 8 AND 9) JACKS ARE AVAILABLE IN STANDARD 4, 6, AND 8 POSITION BODY SIZES									
NUMBER OF CONTACT POSITIONS: CONNECTOR SIZE 4 CAN ACCOMMODATE 2 OR 4 TERMINALS, CONNECTOR SIZE 6 CAN ACCOMMODATE 2, 4, OR 6 TERMINALS, CONNECTOR SIZE 8 CAN ACCOMMODATE 2, 4, 6, 8, OR 10 TERMINALS									
POLARIZATION OPTION: "NO" JACKS WITHOUT KEYING SLOT "YES" JACKS WITH KEYING SLOT (AVAILABLE ON CONNECTOR SIZE 8 ONLY)									
MOUNTING EARS OPTION: "YES" JACKS WITH MOUNTING EARS "NO" JACKS WITHOUT MOUNTING EARS									

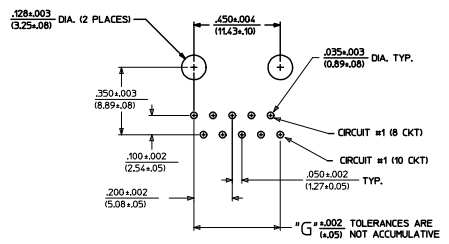
- NOTES:
- 1) MATERIALS: HOUSING- POLYESTER, GLASS FILLED, UL94V-0, COLOR - BLACK
TERMINALS- PHOSPHOR BRONZE ALLOY, .015/(0.38) THICK.
 - 2) TERMINAL PLATING:
SELECT GOLD IN CONTACT AREA: 50 MICRONS MIN.
SELECT TIN IN PC TAIL AREA: 100 MICRONS MIN.
WITH OVERALL NICKEL UNDERPLATE: 50 MICRONS MIN.
*THE PRIMARY SHIPPING CARTON WILL BE LABELED 'COMPLIANT TO ROHS DIRECTIVE 2002/95/EC AND ELV ANNEX II OF DIRECTIVE 2000/53/EC'. CARTONS WITHOUT THIS LABEL MAY CONTAIN PRODUCT WITH TIN-LEAD IN THE PC TAIL.
 - 3) THESE MODULAR JACKS MEET THE PERFORMANCE REQUIREMENTS OF MOLEX PRODUCT SPECIFICATION PS-42878.
 - 4) CONNECTORS ARE SHIPPED IN THERMOFORMED TRAYS, PER PACKAGING SPECIFICATION PK-42878-492.
 - 5) ALL JACKS ARE DESIGNED TO BE USED WITH .062/(1.57) OR .125/(3.18) THICK P.C. BOARDS.
 - 6) ALL JACKS CONFORM TO AND ACCEPT PLUGS WHICH CONFORM TO FCC RULES AND REGULATIONS PART 68, SUBPART F.
 - 7) ALL JACKS MUST BE CAPABLE OF FITTING INTO MOLEX GAGE G-42410 (CONNECTOR SIZE 8).
 - 8) SEE SHEETS 1 & 4 FOR CONNECTOR SIZE 4.
 - 9) SEE SHEETS 2 & 4 FOR CONNECTOR SIZE 6.
 - 10) ENGRAVED NUMBERS ON HOUSING BODY ARE FOR HOLDING IDENTIFICATION ONLY. THEY ARE NOT INTENDED FOR ASSEMBLY IDENTIFICATION PURPOSES.
 - 11) THIS PART CONFORMS TO CLASS B REQUIREMENTS OF COSMETIC SPECIFICATION PS-45499-002 WITH THE EXCEPTION OF THE SNK WHICH CONFORMS TO CLASS C REQUIREMENTS.

P.C. BOARD THICKNESS	DIM. "D" (MTG. PEGS)	DIM. "F" (P.C. TAILS)
.062/(1.57)	.128 (3.25)	.20 +.015/-.025 (3.05 +.38/-.63)
.125/(3.18)	.191 (4.85)	.305 +.015/-.025 (5.21 +.38/-.63)

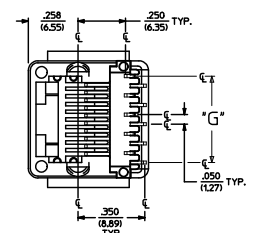
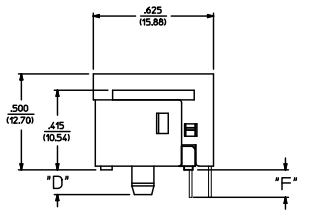
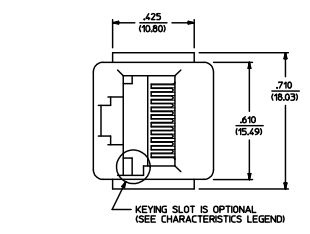
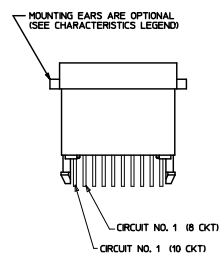
CONNECTOR SIZE	CIRCUIT SIZE	DIM. "G"
8	10	.450 (11.43)
8	8	.350 (8.89)
8	6	.250 (6.35)
8	4	.150 (3.81)
8	2	.050 (1.27)



PANEL CUT-OUT FOR CONNECTOR SIZE 8



P.C. BOARD LAYOUT FOR CONNECTOR SIZE 8
10 CIRCUIT SHOWN



SIZE 8 MODULAR JACK LOADED WITH 10 TERMINALS SHOWN ABOVE

ADD COSMETIC SPEC ESD CONTROL PLAN HZ DRAWING INDUSTRIES INC 2008/10/01 CHKD: BELL 2008/10/01 APPROV: SMITH 2008/10/01 REV	QUALITY SYMBOLS	GENERAL TOLERANCES (UNLESS SPECIFIED)	DIMENSION STYLE	SCALE	DESIGN UNITS	THIRD ANGLE PROJECTION	
	▽	4 PLACES ± .010	IN/MM	1:1	INCH	⊙	
	▽	3 PLACES ± .010	BAP	DATE	1992/04/09	TITLE	ASSEMBLY, VERTICAL LOW PROFILE MODULAR JACKS (CONNECTOR SIZE 8)
	▽	2 PLACES ± 0.25	BAP	DATE	1992/04/09	APPROVED BY	DATE
		1 PLACE B ± .010	RAS	DATE	1992/04/09	MOLEX INCORPORATED	
		ANGULAR ±1/2°	PATENT NO.	DOCUMENT NO.	SDA-42878-****	SHEET NO. 3 OF 5	
		DRAFT WHERE APPLICABLE MUST REMAIN WITHIN DIMENSIONS	SEE SHEET 5				
			THIS DRAWING CONTAINS INFORMATION THAT IS PROPRIETARY TO MOLEX INCORPORATED AND SHOULD NOT BE USED WITHOUT WRITTEN PERMISSION				

ASSEMBLY ITEM NUMBER	PART CHARACTERISTICS				
	EXTERNAL CONNECTOR SIZE	NUMBER OF POSITIONS	P. C. BOARD THICKNESS	POLARIZATION OPTION	MOUNTING EARS OPTION
42878-8408	8 POS. BODY	8	.062	NO	YES
42878-8410	↑	↑	↑	NO	NO
42878-8458	↑	↑	↑	YES	YES
42878-8458	↑	↑	.062	YES	NO
42878-8504	↑	↑	.125	NO	YES
42878-8506	↑	↑	↑	NO	NO
42878-8552	↑	↑	↑	YES	YES
42878-8554	8	.125	YES	NO	NO
42878-8696	6	.062	NO	YES	YES
42878-8698	↑	↑	↑	NO	NO
42878-8744	↑	↑	↑	YES	YES
42878-8746	↑	↑	.062	YES	NO
42878-8792	↑	↑	.125	NO	YES
42878-8794	↑	↑	↑	NO	NO
42878-8840	↑	↑	↑	YES	YES
42878-8842	8 POS. BODY	6	.125	YES	NO

ASSEMBLY ITEM NUMBER	PART CHARACTERISTICS				
	EXTERNAL CONNECTOR SIZE	NUMBER OF POSITIONS	BOARD THICKNESS/ P.C. TAIL OPTION	POLARIZATION OPTION	MOUNTING EARS OPTION
42878-8984	8 POS. BODY	4	.062	NO	YES
42878-8986	↑	↑	↑	NO	NO
42878-9032	↑	↑	↑	YES	YES
42878-9034	↑	↑	.062	YES	NO
42878-9080	↑	↑	.125	NO	YES
42878-9082	↑	↑	↑	NO	NO
42878-9128	↑	↑	↑	YES	YES
42878-9130	↑	↑	.125	YES	NO
42878-9272	↑	2	.062	NO	YES
42878-9274	↑	↑	↑	NO	NO
42878-9320	↑	↑	↑	YES	YES
42878-9322	↑	↑	.062	YES	NO
42878-9368	↑	↑	.125	NO	YES
42878-9370	↑	↑	↑	NO	NO
42878-9416	↑	↑	↑	YES	YES
42878-9418	8 POS. BODY	2	.125	YES	NO

ASSEMBLY ITEM NUMBER	PART CHARACTERISTICS				
	EXTERNAL CONNECTOR SIZE	NUMBER OF POSITIONS	BOARD THICKNESS/ P.C. TAIL OPTION	POLARIZATION OPTION	MOUNTING EARS OPTION
42878-1001	8 POS. BODY	10	.062	NO	YES
42878-1003	↑	↑	.062	NO	NO
42878-1025	↑	↑	.125	NO	YES
42878-1027	↑	↑	↑	NO	NO
42878-1037	↑	↑	↑	YES	YES
42878-1039	8 POS. BODY	10	.125	YES	NO

CHARACTERISTICS LEGEND	
EXTERNAL CONNECTOR BODY DIMENSIONS:	AVAILABLE IN 4, 6, AND 8 POSITION BODY
NUMBER OF CONTACT POSITIONS:	CONNECTOR SIZE 4 ACCOMMODATES 2, OR 4 TERMINALS; CONNECTOR SIZE 6 ACCOMMODATES 2, 4, OR 6 TERMINALS; CONNECTOR SIZE 8 ACCOMMODATES 2, 4, 6, 8, OR 10 TERMINALS
POLARIZATION OPTION: (AVAILABLE ON CONNECTOR SIZE 8 ONLY)	"NO" - WITHOUT KEYING SLOT "YES" - WITH KEYING SLOT
MOUNTING EARS OPTION:	"YES" - PART WITH MOUNTING EARS "NO" - PART WITHOUT MOUNTING EARS
(SEE SHEET 3 FOR PART DESCRIPTIONS AND DIMENSIONS)	

SEE SHEET ONE EC NO. UEP2004-167 DRINKSCHMIDT 2004/03/03 CHOKLSCHMIDT 2004/03/03 APPROVED: 1992/04/09 H	QUALITY SYMBOLS	GENERAL TOLERANCES (UNLESS SPECIFIED)	SCALE	DESIGN UNITS	THIRD ANGLE PROJECTION	REVISE ON CAD ONLY
	▽0	mm INCH	---	INCH	ASSEMBLY, VERTICAL LOW PROFILE MODULAR JACKS (CONNECTOR SIZE 8) MOLEX INCORPORATED MATERIAL NO. _____ DOCUMENT NO. _____ SEE CHART SDA-42878-***** 5 OF 5 THIS DRAWING CONTAINS INFORMATION THAT IS PROPRIETARY TO MOLEX INCORPORATED AND SHOULD NOT BE USED WITHOUT WRITTEN PERMISSION	SHEET NO.
	▽0	4 PLACES ±--- ±---	DRAWN BY	DATE		
		3 PLACES ±--- ±---	BAP	1992/04/09		
	2 PLACES ±--- ±---	CHECKED BY	DATE			
	1 PLACE ±--- ±---	BAP	1992/04/09			
		ANGULAR ±1/2°	APPROVED BY	DATE		
		DRAFT WHERE APPLICABLE	RAS	1992/04/09		
		MUST REMAIN WITHIN DIMENSIONS				