

**PLEASE CHECK WWW.MOLEX.COM FOR LATEST PART INFORMATION**

**Part Number:** [0039310040](#)  
**Status:** **Active**  
**Overview:** [minifit\\_jr](#)  
**Description:** 4.20mm (.165") Pitch Mini-Fit Jr.™ Header, Dual Row, Vertical, without Snap-in Plastic Peg PCB Lock, 4 Circuits, PA Polyamide Nylon 6/6 94V-0, Tin (Sn) Plating, with Drain Holes

**Documents:**

[3D Model](#)  
[Drawing \(PDF\)](#)

[RoHS Certificate of Compliance \(PDF\)](#)

**Agency Certification**

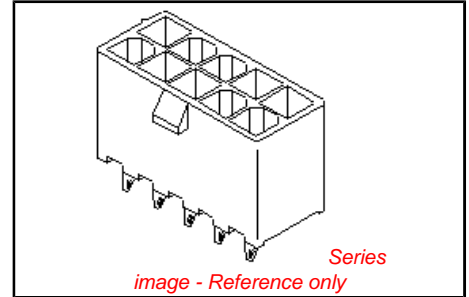
CSA	LR19980
TUV	R72081037
UL	E29179

**General**

Product Family	PCB Headers
Series	5566
Application	Wire-to-Board
Comments	Current = 13A max. per circuit when header is mated to a receptacle loaded with 45750 Mini-Fit Plus HCS™ Crimp Terminal Crimped to to 16 AWG wire. . See Molex product specification PS-45750-001 for additional current de-rating information.. High Temperature, Square Pin, Solder Type
Overview	<a href="#">minifit_jr</a>
Product Name	Mini-Fit Jr.™

**Physical**

Breakaway	No
Circuits (Loaded)	4
Circuits (maximum)	4
Color - Resin	Natural
Durability (mating cycles max)	30
First Mate / Last Break	No
Flammability	94V-0
Glow-Wire Compliant	No
Guide to Mating Part	No
Keying to Mating Part	None
Lock to Mating Part	Yes
Material - Metal	Brass
Material - Plating Mating	Gold
Material - Plating Termination	Tin
Material - Resin	Nylon
Number of Rows	2
Orientation	Vertical
PC Tail Length (in)	0.138 In
PC Tail Length (mm)	3.50 mm
PCB Locator	Yes
PCB Retention	None
PCB Thickness Recommended (in)	0.062 In
PCB Thickness Recommended (mm)	1.60 mm
Packaging Type	Bag
Pitch - Mating Interface (in)	0.165 In
Pitch - Mating Interface (mm)	4.20 mm



**EU RoHS**

**ELV and RoHS Compliant**  
**REACH SVHC**  
 Not Reviewed  
**Halogen-Free Status**  
**Halogen-Free**

**China RoHS**



**Need more information on product environmental compliance?**

Email [productcompliance@molex.com](mailto:productcompliance@molex.com)  
 For a multiple part number RoHS Certificate of Compliance, [click here](#)

Please visit the [Contact Us](#) section for any non-product compliance questions.

**Search Parts in this Series**  
[5566Series](#)

**Mates With**  
[5557 Mini-Fit Jr.™ Receptacle Housing](#)

Pitch - Term. Interface (in)	0.165 In
Pitch - Term. Interface (mm)	4.20 mm
Polarized to Mating Part	Yes
Polarized to PCB	Yes
Shrouded	Fully
Stackable	No
Surface Mount Compatible (SMC)	No
Temperature Range - Operating	-40°C to +105°C
Termination Interface: Style	Through Hole

**Electrical**

Current - Maximum per Contact	13A
Voltage - Maximum	600V

**Material Info**

Old Part Number	A556604B210
-----------------	-------------

**Reference - Drawing Numbers**

Sales Drawing	SD-5566-002
---------------	-------------

This document was generated on 05/21/2010

**PLEASE CHECK [WWW.MOLEX.COM](http://WWW.MOLEX.COM) FOR LATEST PART INFORMATION**

CIRCUIT SIZE	DIM. 'A'	DIM. 'B'
2	.21 (5.4)	—
4	.38 (9.6)	.17 (4.2)
6	.54 (13.8)	.33 (8.4)
8	.71 (18.0)	.50 (12.6)
10	.87 (22.2)	.66 (16.8)
12	1.04 (26.4)	.83 (21.0)
14	1.20 (30.6)	.99 (25.2)
16	1.37 (34.8)	1.16 (29.4)
18	1.54 (39.0)	1.32 (33.6)
20	1.70 (43.2)	1.49 (37.8)
22	1.87 (47.4)	1.65 (42.0)
24	2.03 (51.6)	1.82 (46.2)

**LEGEND**

BASE NUMBER 5566 - N \* \* \* \* \*

CIRCUIT SIZE

ASS'Y TYPE  
A : WITHOUT DRAIN HOLES  
B : WITH DRAIN HOLES

TERMINAL MATERIAL  
SEE NOTE 1

TERMINAL PLATING  
SEE NOTE 2

HOUSING MATERIAL  
SEE NOTE 1

COLOR OR PACKAGING  
BL : BLACK RE : RED GR : GRAY  
BU : BLUE YE : YELLOW GRE : GREEN  
TA : TRAY PACKAGING SEE NOTE 4

**NOTES:**

1. MATERIALS:  
HOUSING:  
"BLANK"=NYLON 6/6, UL94V-2, COLOR: NATURAL  
"210"=NYLON 6/6, UL94V-0, COLOR: NATURAL  
"400"=NYLON 6/6, UL94V-0, COLOR: BLACK

TERMINALS:  
"BLANK" = BRASS  
"PB" = PHOSPHOR BRONZE

2. TERMINAL PLATING:  
"BLANK" = BRIGHT TIN 0.00035/(0.00090) MIN.  
OVER COPPER .00020/(0.00050) MIN. (BRASS)  
TIN .00035/(0.00090) MIN. REFLOW TREATMENT  
OR BRIGHT TIN .00035/(0.00090) MIN. (PHOSPHOR BRONZE)  
"S"=.000100/(0.00254) MIN. BRIGHT TIN OVER  
.000050/(0.00127) MIN. NICKEL  
"GS2"=.00015/(0.0038) MIN. SELECT GOLD AND  
.00100/(0.00254) MIN. SELECT MATTE TIN  
OVER .000050/(0.00127) MIN. NICKEL OVERALL  
"GS"=.00030/(0.00076) MIN. SELECT GOLD AND  
.00100/(0.00254) MIN. SELECT MATTE TIN  
OVER .000050/(0.00127) MIN. NICKEL OVERALL

3. PRODUCT SPECIFICATION: PS-5556-001

4. PACKAGING: "BLANK"= BULK PACKED, "TA"=TRAY PACK PER PK-5566-001

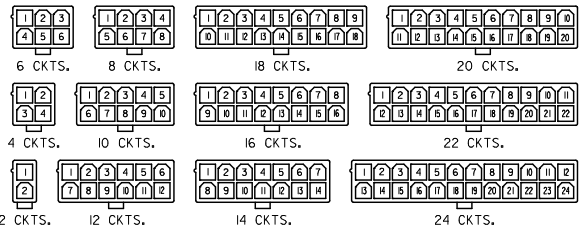
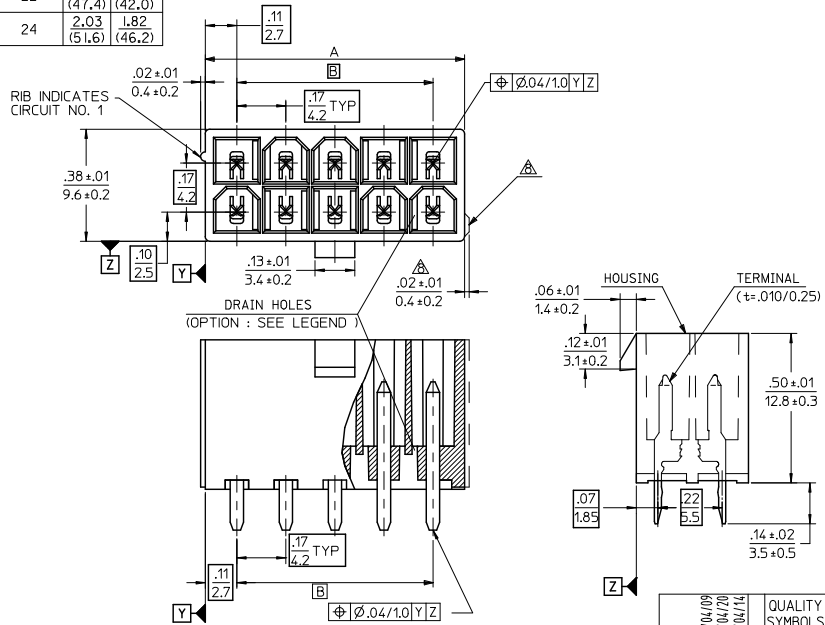
5. PART MATES WITH MINI-FIT JR. RECEPTACLE NO. 5557.

6. PART IS NOT DESIGNED FOR CURRENT SHARING.

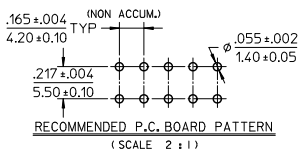
7. PARTS ARE NOT DESIGNED TO BE MATED OR UN-MATED WHILE CIRCUITS ARE LIVE.

8. ANTI-SHINGLING RIB MAY OR MAY NOT APPEAR ON HOUSINGS.

9. PART CONFORMS TO CLASS 'B' REQUIREMENTS OF COSMETIC SPECIFICATION PS-45499-002.



CIRCUIT SIZE LAYOUT



CORRECTED PN EC NO. UCP200-2614 DRAWN: JAGUILAR 2010/04/09 CHKD: JEBEL 94/04/20 APPROV: SMITH 2010/04/14	QUALITY SYMBOLS ▽=0 ▽=0 ▽=0	GENERAL TOLERANCES (UNLESS SPECIFIED):	DIMENSION STYLE IN/MM	SCALE 4:1	DESIGN UNITS METRIC	THIRD ANGLE PROJECTION
		4 PLACES ±.005 ±.005 3 PLACES ±.005 ±.005 2 PLACES ±.010 ±.010 1 PLACE ±.025 ±.025 ANGULAR ± 3°	DRAWN BY H. HIRAMOTO DATE '89/04/03 CHECKED BY M. FUKUSHIMA DATE '94/04/20 APPROVED BY M. FUKUSHIMA DATE '94/04/20	TITLE <b>NEW MINI FIT CONNECTOR HEADER HOUSING ASS'Y -LEAD FREE-</b>	MATERIAL NO. SD-5566-002	
DRAFT WHERE APPLICABLE MUST REMAIN WITHIN DIMENSIONS		SEE TABLE	THIS DRAWING CONTAINS INFORMATION THAT IS PROPRIETARY TO MOLEX INCORPORATED AND SHOULD NOT BE USED WITHOUT WRITTEN PERMISSION			

	10	9	8	7	6	5	4	3	2	1	
F	39-30-9247 ▲ -9227 -9207 -9187 -9167 -9147 -9127 -9107 -9087 -9067 ▼ -9047	5566-24BGS2-210 ▲ -22BGS2-210 -20BGS2-210 -18BGS2-210 -16BGS2-210 -14BGS2-210 -12BGS2-210 -10BGS2-210 -08BGS2-210 -06BGS2-210 ▼ -04BGS2-210	39-31-0248 ▲ -0228 -0208 -0188 -0168 -0148 -0128 -0108 -0088 -0068 ▼ -0048	5566-24BGS-210 ▲ -22BGS-210 -20BGS-210 -18BGS-210 -16BGS-210 -14BGS-210 -12BGS-210 -10BGS-210 -08BGS-210 -06BGS-210 ▼ -04BGS-210	39-31-0242 ▲ -0222 -0202 -0182 -0162 -0142 -0122 -0102 -0082 -0062 ▼ -0042	5566-24BS-210 ▲ -22BS-210 -20BS-210 -18BS-210 -16BS-210 -14BS-210 -12BS-210 -10BS-210 -08BS-210 -06BS-210 ▼ -04BS-210	39-31-0240 ▲ -0220 -0200 -0180 -0160 -0140 -0120 -0100 -0080 -0060 ▼ -0040	5566-24B-210 ▲ -22B-210 -20B-210 -18B-210 -16B-210 -14B-210 -12B-210 -10B-210 -08B-210 -06B-210 ▼ -04B-210	39-30-6244 ▲ -6224 -6204 -6184 -6164 -6144 -6124 -6104 -6084 -6064 ▼ -6044	5566-24APBS-210 ▲ -22APBS-210 -20APBS-210 -18APBS-210 -16APBS-210 -14APBS-210 -12APBS-210 -10APBS-210 -08APBS-210 -06APBS-210 ▼ -04APBS-210	24 22 20 18 16 14 12 10 8 6 4 2
E	EDP NO.	ENG. NO.	EDP NO.	ENG. NO.	EDP NO.	ENG. NO.	EDP NO.	ENG. NO.	EDP NO.	ENG. NO.	CKT. SIZE
	5566-NBGS2-210		5566-NBGS-210		5566-NBS-210		5566-NB-210		5566-NAPBS-210		
	39-30-9246 ▲ -9226 -9206 -9186 -9166 -9146 -9126 -9106 -9086 -9066 ▼ -9046	5566-24BGS2 ▲ -22BGS2 -20BGS2 -18BGS2 -16BGS2 -14BGS2 -12BGS2 -10BGS2 -08BGS2 -06BGS2 ▼ -04BGS2	39-31-0247 ▲ -0227 -0207 -0187 -0167 -0147 -0127 -0107 -0087 -0067 ▼ -0047	5566-24BGS ▲ -22BGS -20BGS -18BGS -16BGS -14BGS -12BGS -10BGS -08BGS -06BGS ▼ -04BGS	39-31-0241 ▲ -0221 -0201 -0181 -0161 -0141 -0121 -0101 -0081 -0061 ▼ -0041	5566-24BS ▲ -22BS -20BS -18BS -16BS -14BS -12BS -10BS -08BS -06BS ▼ -04BS	39-29-3246 ▲ -3226 -3206 -3186 -3166 -3146 -3126 -3106 -3086 -3066 ▼ -3046	5566-24B ▲ -22B -20B -18B -16B -14B -12B -10B -08B -06B ▼ -04B	39-30-6243 ▲ -6223 -6203 -6183 -6163 -6143 -6123 -6103 -6083 -6063 ▼ -6043	5566-24APBS ▲ -22APBS -20APBS -18APBS -16APBS -14APBS -12APBS -10APBS -08APBS -06APBS ▼ -04APBS	24 22 20 18 16 14 12 10 8 6 4 2
D	EDP NO.	ENG. NO.	EDP NO.	ENG. NO.	EDP NO.	ENG. NO.	EDP NO.	ENG. NO.	EDP NO.	ENG. NO.	CKT. SIZE
	5566-NBGS2		5566-NBGS		5566-NBS		5566-NB		5566-NAPBS		
	39-30-9026 ▲ -9226 -9206 -9186 -9166 -9146 -9126 -9106 -9086 -9066 ▼ -9046	5566-02BGS2 ▲ -22BGS2 -20BGS2 -18BGS2 -16BGS2 -14BGS2 -12BGS2 -10BGS2 -08BGS2 -06BGS2 ▼ -04BGS2	39-31-0027 ▲ -0227 -0207 -0187 -0167 -0147 -0127 -0107 -0087 -0067 ▼ -0047	5566-02BGS ▲ -22BGS -20BGS -18BGS -16BGS -14BGS -12BGS -10BGS -08BGS -06BGS ▼ -04BGS	39-31-0021 ▲ -0221 -0201 -0181 -0161 -0141 -0121 -0101 -0081 -0061 ▼ -0041	5566-02BS ▲ -22BS -20BS -18BS -16BS -14BS -12BS -10BS -08BS -06BS ▼ -04BS	39-29-3026 ▲ -3226 -3206 -3186 -3166 -3146 -3126 -3106 -3086 -3066 ▼ -3046	5566-02B ▲ -22B -20B -18B -16B -14B -12B -10B -08B -06B ▼ -04B	39-30-6023 ▲ -6223 -6203 -6183 -6163 -6143 -6123 -6103 -6083 -6063 ▼ -6043	5566-02APBS ▲ -22APBS -20APBS -18APBS -16APBS -14APBS -12APBS -10APBS -08APBS -06APBS ▼ -04APBS	24 22 20 18 16 14 12 10 8 6 4 2
C	EDP NO.	ENG. NO.	EDP NO.	ENG. NO.	EDP NO.	ENG. NO.	EDP NO.	ENG. NO.	EDP NO.	ENG. NO.	CKT. SIZE
	5566-NBGS2		5566-NBGS		5566-NBS		5566-NB		5566-NAPBS		
	39-31-0245 ▲ -0225 -0205 -0185 -0165 -0145 -0125 -0105 -0085 -0065 ▼ -0045	5566-24BPBS ▲ -22BPBS -20BPBS -18BPBS -16BPBS -14BPBS -12BPBS -10BPBS -08BPBS -06BPBS ▼ -04BPBS	39-31-0243 ▲ -0223 -0203 -0183 -0163 -0143 -0123 -0103 -0083 -0063 ▼ -0043	5566-24BPS ▲ -22BPS -20BPS -18BPS -16BPS -14BPS -12BPS -10BPS -08BPS -06BPS ▼ -04BPS	39-31-0243 ▲ -0223 -0203 -0183 -0163 -0143 -0123 -0103 -0083 -0063 ▼ -0043	5566-24BPB ▲ -22BPB -20BPB -18BPB -16BPB -14BPB -12BPB -10BPB -08BPB -06BPB ▼ -04BPB	39-31-0246 ▲ -0226 -0206 -0186 -0166 -0146 -0126 -0106 -0086 -0066 ▼ -0046	5566-24BPBS-210 ▲ -22BPBS-210 -20BPBS-210 -18BPBS-210 -16BPBS-210 -14BPBS-210 -12BPBS-210 -10BPBS-210 -08BPBS-210 -06BPBS-210 ▼ -04BPBS-210	39-31-0244 ▲ -0224 -0204 -0184 -0164 -0144 -0124 -0104 -0084 -0064 ▼ -0044	5566-24BPB-210 ▲ -22BPB-210 -20BPB-210 -18BPB-210 -16BPB-210 -14BPB-210 -12BPB-210 -10BPB-210 -08BPB-210 -06BPB-210 ▼ -04BPB-210	24 22 20 18 16 14 12 10 8 6 4 2
B	EDP NO.	ENG. NO.	EDP NO.	ENG. NO.	EDP NO.	ENG. NO.	EDP NO.	ENG. NO.	EDP NO.	ENG. NO.	CKT. SIZE
	5566-NBPBS		5566-NBPB		5566-NBPBS-210		5566-NBPB-210				
A	PARTS WITH DRAIN HOLES										

SEE SHEET 1 EC NO: UCP2010-2614 DRWN: JAGUILAR 2010/04/09 CHKD: BELL 94/04/20 APPR: SMITH 2010/04/14 REV:	GENERAL TOLERANCES (UNLESS SPECIFIED)		DIMENSION STYLE IN/MM		SCALE ---	DESIGN UNITS METRIC	THIRD ANGLE PROJECTION
	10 UNDER	± ---	DRAWN BY H. HIRAMOTO	DATE 89/04/03	TITLE NEW MINI FIT CONNECTOR HEADER HOUSING ASS'Y - LEAD FREE-		
	10 OVER 30 UNDER	± ---	CHECKED BY M. FUKUSHIMA	DATE 94/04/20	MOLEX INCORPORATED		
	30 OVER	± ---	APPROVED BY M. FUKUSHIMA	DATE 94/04/20	DOCUMENT NO. SD-5566-002 SHEET NO. 3 OF 6		
ANGULAR ± --- °		DRAFT WHERE APPLICABLE MUST REMAIN WITHIN DIMENSIONS		MATERIAL NO. SEE TABLE		THIS DRAWING CONTAINS INFORMATION THAT IS PROPRIETARY TO MOLEX INCORPORATED AND SHOULD NOT BE USED WITHOUT WRITTEN PERMISSION	