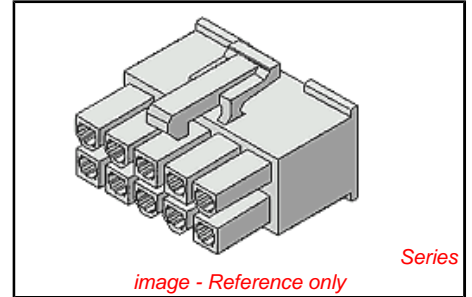


**PLEASE CHECK WWW.MOLEX.COM FOR LATEST PART INFORMATION**

**Part Number:** [0039013048](#)  
**Status:** **Active**  
**Overview:** [minifit\\_jr](#)  
**Description:** 4.20mm (.165") Pitch Mini-Fit Jr.™ Receptacle Housing, Dual Row, PA Polyamide Nylon 6/6, UL 94V-0, 4 Circuits

**Documents:**

<a href="#">3D Model</a>	<a href="#">Product Specification PS-5556-001 (PDF)</a>
<a href="#">Test Summary (PDF)</a>	<a href="#">RoHS Certificate of Compliance (PDF)</a>
<a href="#">Drawing (PDF)</a>	



**Agency Certification**

CSA	LR19980
TUV	R72081037
UL	E29179

**General**

Product Family	Crimp Housings
Series	5557
Comments	Current = 13A max. per circuit when header is mated to a receptacle loaded with 45750 series terminals crimped to 16 AWG wire. . See Molex product specification PS-45750-001 for additional current de-rating information.. See Molex product specification PS-5556-001 for additional current de-rating information.
Overview	<a href="#">minifit_jr</a>
Product Name	Mini-Fit Jr.™

**Physical**

Breakaway	No
Circuits (maximum)	4
Color - Resin	Natural (White)
Flammability	94V-0
Gender	Female
Glow-Wire Compliant	No
Keying to Mating Part	None
Lock to Mating Part	Yes
Material - Resin	Nylon
Number of Rows	2
Packaging Type	Bag
Panel Mount	No
Pitch - Mating Interface (in)	0.165 In
Pitch - Mating Interface (mm)	4.20 mm
Pitch - Term. Interface (in)	0.165 In
Pitch - Term. Interface (mm)	4.20 mm
Polarized to Mating Part	Yes
Stackable	No
Temperature Range - Operating	-40°C to +105°C

**Electrical**

Current - Maximum per Contact	13A
-------------------------------	-----

**Material Info**

Old Part Number	5557-04R1-210
-----------------	---------------

**Reference - Drawing Numbers**

Product Specification	PS-5556-001
-----------------------	-------------

**EU RoHS**

**ELV and RoHS Compliant**  
**REACH SVHC**  
 Not Reviewed  
**Halogen-Free Status**  
**Halogen-Free**

**China RoHS**



**Need more information on product environmental compliance?**

Email [productcompliance@molex.com](mailto:productcompliance@molex.com)  
 For a multiple part number RoHS Certificate of Compliance, [click here](#)

Please visit the [Contact Us](#) section for any non-product compliance questions.

**Search Parts in this Series**  
[5557Series](#)

**Mates With**

39-01-2046 Panel Mount Plug, 39-01-3049 Free Hanging Plug, 5566 Vertical Headers, 5569Right Angle Headers, 42440 PCB Headers

**Use With**

44476 Mini-Fit HCS™ Female Crimp Terminals. 45750 Mini-Fit Plus HCS™ Female Crimp Terminals. 5556 Mini-Fit Jr.™ Female Crimp Terminals. 444851211 Mini-Fit® High Cycle Female Crimp Terminal

Sales Drawing  
Test Summary

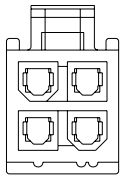
SD-5557-\*\*R1-\*

TS-5556-002

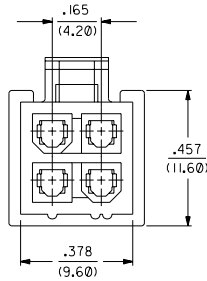
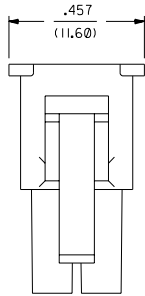
This document was generated on 05/19/2010

**PLEASE CHECK [WWW.MOLEX.COM](http://WWW.MOLEX.COM) FOR LATEST PART INFORMATION**

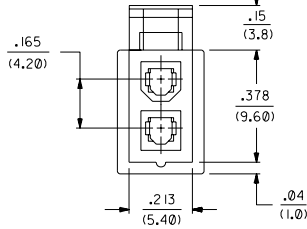
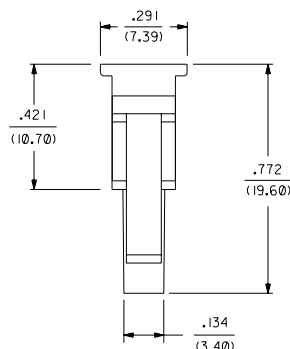
PART NUMBER	ENG. NUMBER	MATERIAL (SEE NOTE 1)
39-01-3028	5557-02R1-210	94V-0
39-01-3048	5557-04R1-210	94V-0
39-01-3022	5557-02R1	94V-2
39-01-3042	5557-04R1	94V-2
15-04-6021	5557-02R1-220	94V-2, U.V. STABLE
NO E.D.P.	5557-04R1-220	94V-2, U.V. STABLE
39-01-6026	5557-02R1-BL	94V-2, BLACK
NO E.D.P.	5557-04R1-BL	94V-2, BLACK



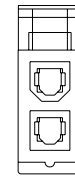
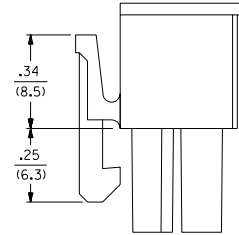
5557-04R-\*\*-  
(WITHOUT SIDE PULL TABS)  
(SHOWN FOR REFERENCE ONLY)



5557-04R1-\*\*-



5557-02R1-\*\*-

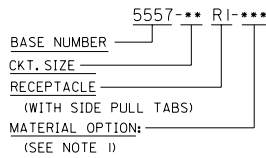


5557-02R-\*\*-  
(WITHOUT SIDE PULL TABS)  
(SHOWN FOR REFERENCE ONLY)

**NOTES:**

- MATERIAL:  
 \*BLANK\* = NYLON 6/6, U.L. 94V-2, COLOR: NATURAL.  
 \*210\* = NYLON 6/6, U.L. 94V-0, COLOR: NATURAL.  
 \*220\* = NYLON 6/6, U.L. 94V-2, U.V. STABILIZED, COLOR: BLACK.  
 \*BL\* = NYLON 6/6, U.L. 94V-2, COLOR: BLACK.
- PART IS FOR USE WITH MOLEX FEMALE TERMINAL #5556.
- PART MATES WITH MOLEX PLUG #5559.
- PART IS DESIGNED IN METRIC.
- PRODUCT SPECIFICATION: PS-5556-001.
- PARTS TO BE PACKAGED PER PK-5557-002

**LEGEND:**



REV.	DESCRIPTION
G1	ADD NOTE 6 ECN #1022004-0347 CSTEWART.03-09-19
G	REV PS NOTE 10/2003-0396 9/3/2002 SAMEEC
F	ADDED -BL OPTION PER ECN U11972 10-8-91 RJF
E1	94V-2 WAS 94V-0 ECN U11607 GEP 7-26-91 RJF
E	ADDED NOTE 5 ECN U11273 GEP 7-26-91 RJF
D	ADDED -NR VIEWS ECR U10958 2-27-91 RJF
C	ADDED DIM'S PER ECR U06735 GEP 10-4-90 RJF
B	REDRAWN ON CAD ECR U09570 GEP 8-9-90 RJF

DIMENSIONS SHOWN (METRIC) INCH		MFG. SH. REV. LTR. REVISIONS	
UNLESS OTHERWISE SPECIFIED TOLERANCES ANGULAR ± 0.2°		REVISE ONLY ON CAD SYSTEM	
1 PLACE ± .015	2 PLACE ± .005	TITLE 2 & 4 CKT. RECEPTACLE, MINI-FIT JR. SERIES	
3 PLACE ± .0025	4 PLACE ± .0015	MOLEX INCORPORATED SHEET NO. DATE 1 OF 1 8 / 8 / 90	
DRAFT WHERE APPLICABLE MUST REMAIN WITHIN DIMENSIONS		PART NO. DRWG. NO. SD-5557-**-RI-**-	
DRG. BY: GEP	CHK'D. BY: RJF	SEE CHART	
APP'D. RAS	SCALE 4 : 1	FILE NAME: 5555124X1 000	
NO DIMENSIONS CONTAINING INFORMATION THAT IS PROPRIETARY TO MOLEX INC. AND SHOULD NOT BE USED WITHOUT WRITTEN PERMISSION.		CP C	