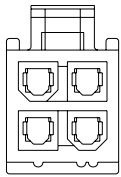
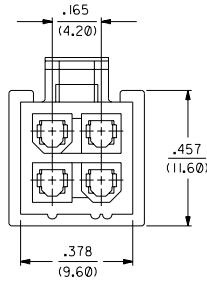
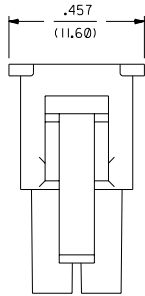


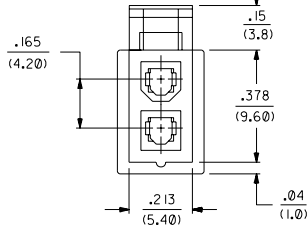
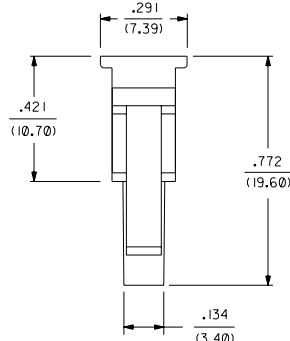
PART NUMBER	ENG. NUMBER	MATERIAL (SEE NOTE 1)
39-01-3028	5557-02R1-210	94V-0
39-01-3048	5557-04R1-210	94V-0
39-01-3022	5557-02R1	94V-2
39-01-3042	5557-04R1	94V-2
15-04-6021	5557-02R1-220	94V-2, U.V. STABLE
NO E.D.P.	5557-04R1-220	94V-2, U.V. STABLE
39-01-6026	5557-02R1-BL	94V-2, BLACK
NO E.D.P.	5557-04R1-BL	94V-2, BLACK



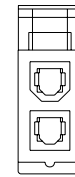
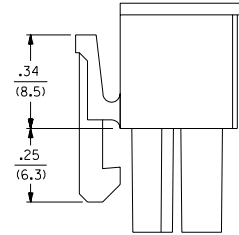
5557-04R-\*\*-  
(WITHOUT SIDE PULL TABS)  
(SHOWN FOR REFERENCE ONLY)



5557-04R1-\*\*-



5557-02R1-\*\*-

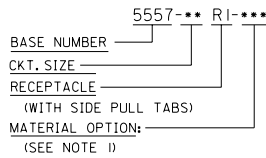


5557-02R-\*\*-  
(WITHOUT SIDE PULL TABS)  
(SHOWN FOR REFERENCE ONLY)

**NOTES:**

- MATERIAL:  
 \*BLANK\* = NYLON 6/6, U.L. 94V-2, COLOR: NATURAL.  
 \*210\* = NYLON 6/6, U.L. 94V-0, COLOR: NATURAL.  
 \*220\* = NYLON 6/6, U.L. 94V-2, U.V. STABILIZED, COLOR: BLACK.  
 \*BL\* = NYLON 6/6, U.L. 94V-2, COLOR: BLACK.
- PART IS FOR USE WITH MOLEX FEMALE TERMINAL #5556.
- PART MATES WITH MOLEX PLUG #5559.
- PART IS DESIGNED IN METRIC.
- PRODUCT SPECIFICATION: PS-5556-001.
- PARTS TO BE PACKAGED PER PK-5557-002

**LEGEND:**



REV.	DESCRIPTION
G1	ADD NOTE 6 ECN #1022004-0347 CSTEWART.03-09-19
G	REV PS NOTE 10/2003-0396 9/3/2002 SAMEEC
F	ADDED -BL OPTION PER ECN U11972 10-8-91 RJF
E1	94V-2 WAS 94V-0 ECN U11607 GEP 7-26-91 RJF
E	ADDED NOTE 5 ECN U11273 GEP 7-26-91 RJF
D	ADDED -NR VIEWS ECR U10958 2-27-91 RJF
C	ADDED DIM'S PER ECR U06735 GEP 10-4-90 RJF
B	REDRAWN ON CAD ECR U09570 GEP 8-9-90 RJF

DIMENSIONS SHOWN (METRIC) INCH		MFG. SH. REV. LTR. REVISIONS									
UNLESS OTHERWISE SPECIFIED TOLERANCES ANGULAR ± 1/2°		REVISE ONLY ON CAD SYSTEM									
<table border="1"> <thead> <tr> <th>INCH</th> <th>METRIC</th> </tr> </thead> <tbody> <tr> <td>3 PLACE ± .015</td> <td>---</td> </tr> <tr> <td>2 PLACE ± .---</td> <td>± .38</td> </tr> <tr> <td>1 PLACE ± .---</td> <td>± .---</td> </tr> </tbody> </table>		INCH	METRIC	3 PLACE ± .015	---	2 PLACE ± .---	± .38	1 PLACE ± .---	± .---	TITLE: 2 & 4 CKT. RECEPTACLE, MINI-FIT JR. SERIES MFG. INCORPORATED SHEET NO. DATE U.S.A. 1 OF 1 8 / 8 / 90	
INCH	METRIC										
3 PLACE ± .015	---										
2 PLACE ± .---	± .38										
1 PLACE ± .---	± .---										
DRAFT WHERE APPLICABLE MUST REMAIN WITHIN DIMENSIONS ORG. BY: GEP CWD. BY: RJF APP'D. RAS SCALE: 4 : 1		SEE CHART SD-5557-**-RI-** FILE NAME: 5555124X1 NO. DRAWING CONTAINS INFORMATION THAT IS PROPRIETARY TO MOLEX INC. AND SHOULD NOT BE USED WITHOUT WRITTEN PERMISSION. CP C									