

**PLEASE CHECK WWW.MOLEX.COM FOR LATEST PART INFORMATION**

**Part Number:** [0350211201](#)  
**Status:** **Active**  
**Description:** Board-In Right Angle Crimp Terminal 35021, Reel, Brass Tin (Sn)

**Documents:**

<a href="#">3D Model</a>	<a href="#">Product Specification PS-35044-001 (PDF)</a>
<a href="#">Drawing (PDF)</a>	<a href="#">RoHS Certificate of Compliance (PDF)</a>

**General**

Product Family	Crimp Terminals
Series	35021
Comments	Right Angle, Use with Housing 35023
Crimp Quality Equipment	Yes
Product Name	Board-In

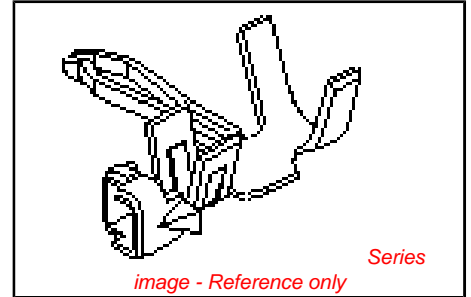
**Physical**

Gender	Male
Material - Metal	Brass
Material - Plating Mating	Tin
Material - Plating Termination	Tin
Packaging Type	Reel
Plating min: Mating (µin)	32.00
Plating min: Mating (µm)	0.800
Plating min: Termination (µin)	32.00
Plating min: Termination (µm)	0.80
Termination Interface: Style	Crimp or Compression
Wire Insulation Diameter	1.5 mm Max (.059" Max)
Wire Size AWG	24, 30
Wire Size mm <sup>2</sup>	N/A

**Material Info**

**Reference - Drawing Numbers**

Product Specification	PS-35044-001
Sales Drawing	SD-35021-001, SD-35021-1***



<b>EU RoHS</b> <b>ELV and RoHS</b> <b>Compliant</b>	<b>China RoHS</b>
<b>REACH SVHC</b> <b>Contains SVHC: No</b>	
<b>Halogen-Free</b> <b>Status</b> <b>Halogen-Free</b>	

**Need more information on product environmental compliance?**

Email [productcompliance@molex.com](mailto:productcompliance@molex.com)  
 For a multiple part number RoHS Certificate of Compliance, [click here](#)

Please visit the [Contact Us](#) section for any non-product compliance questions.

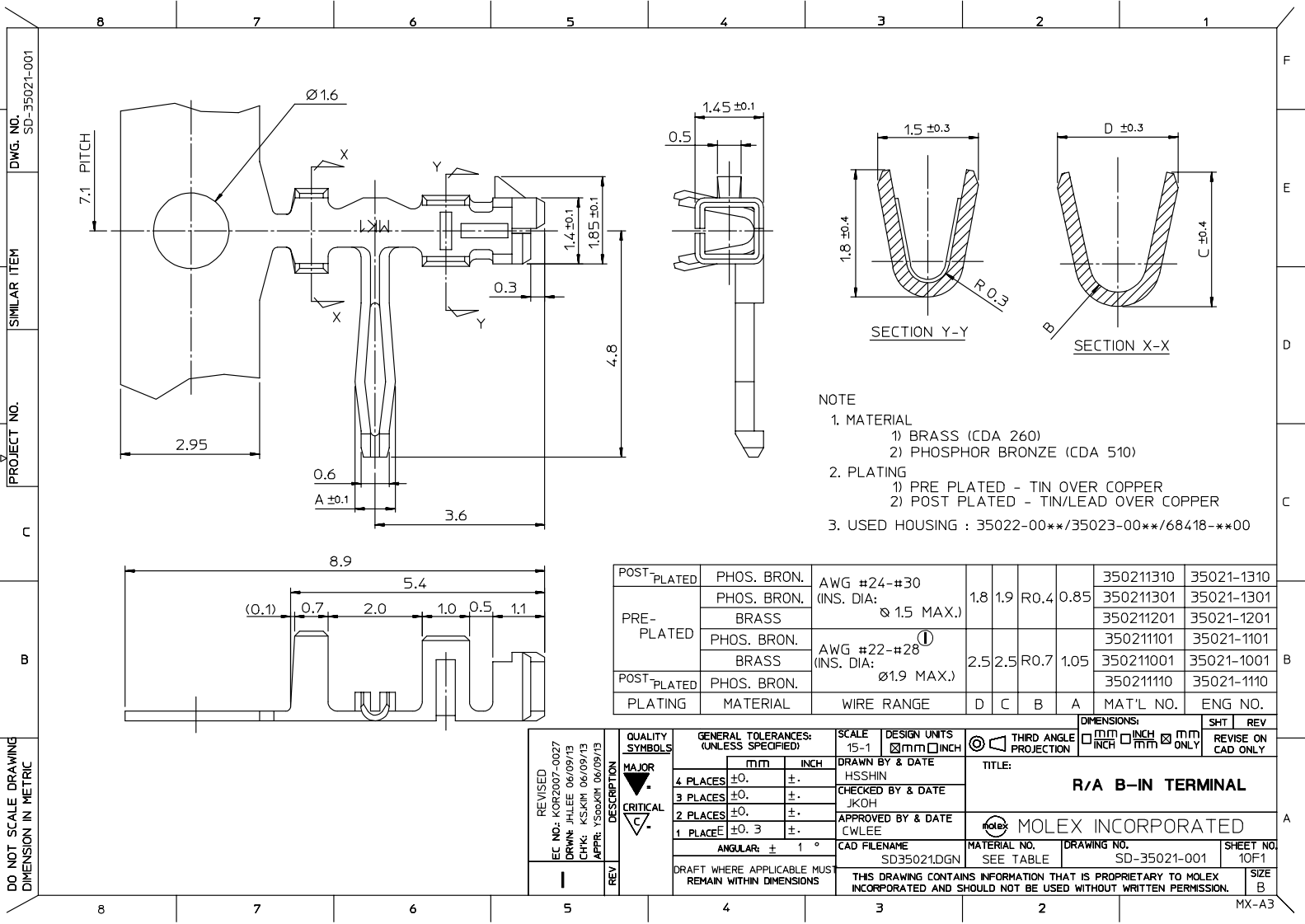
**Search Parts in this Series**  
35021Series

**Use With**  
35023 Housing

**Application Tooling | FAQ**  
*Tooling specifications and manuals are found by selecting the products below. Crimp Height Specifications are then contained in the Application Tooling Specification document.*

<b>Global</b>	<b>Description</b>	<b>Product #</b>
	HAND CRIMP TOOL	0638116900
	T2 Terminator Die	0638532000
	FineAdjust™	0638632000
	Applicator	

**PLEASE CHECK WWW.MOLEX.COM FOR LATEST PART INFORMATION**



- NOTE
- MATERIAL
    - BRASS (CDA 260)
    - PHOSPHOR BRONZE (CDA 510)
  - PLATING
    - PRE PLATED - TIN OVER COPPER
    - POST PLATED - TIN/LEAD OVER COPPER
  - USED HOUSING : 35022-00\*\*/35023-00\*\*/68418-\*\*\*00

POST-PLATED	PHOS. BRON.	AWG #24-#30	1.8	1.9	R0.4	0.85	350211310	35021-1310
PRE-PLATED	PHOS. BRON.	(INS. DIA: Ø 1.5 MAX.)					350211301	35021-1301
	BRASS						350211201	35021-1201
PRE-PLATED	PHOS. BRON.	AWG #22-#28 ①					350211101	35021-1101
	BRASS	(INS. DIA: Ø1.9 MAX.)	2.5	2.5	R0.7	1.05	350211001	35021-1001
POST-PLATED	PHOS. BRON.						350211110	35021-1110
PLATING	MATERIAL	WIRE RANGE	D	C	B	A	MAT'L NO.	ENG NO.

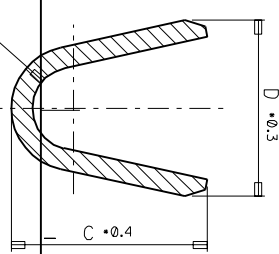
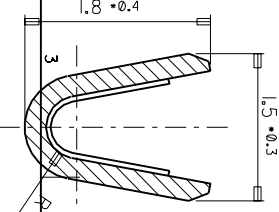
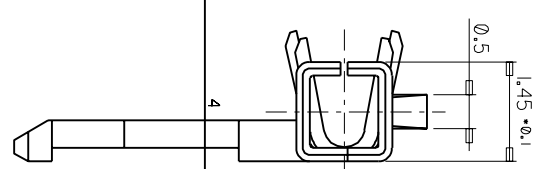
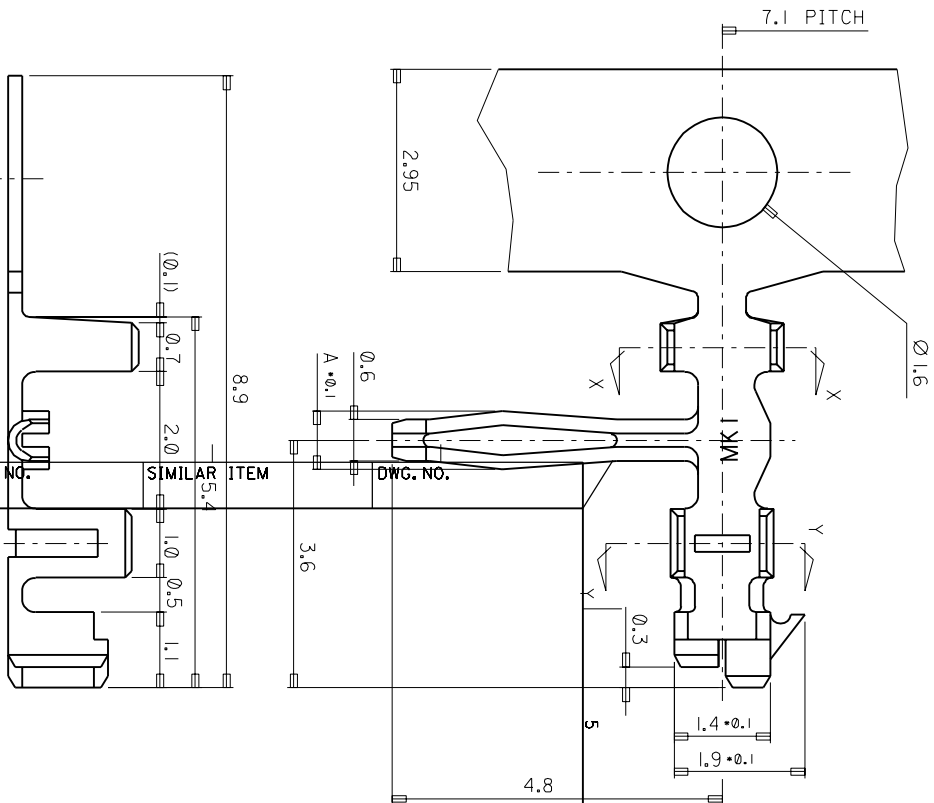
DO NOT SCALE DRAWING  
DIMENSION IN METRIC

REVISED EC NO: KOR2007-0027 DRWN: JHLEE 06/09/13 CHK: KSJIM 06/09/13 APPR: YSOOKIM 06/09/13	QUALITY SYMBOLS MAJOR CRITICAL REVISIONS	GENERAL TOLERANCES: (UNLESS SPECIFIED)		SCALE 15-1	DESIGN UNITS <input checked="" type="checkbox"/> mm <input type="checkbox"/> INCH	THIRD ANGLE PROJECTION <input checked="" type="checkbox"/> <input type="checkbox"/>	DIMENSIONS: <input type="checkbox"/> mm <input type="checkbox"/> INCH <input checked="" type="checkbox"/> mm ONLY		SHT REV	
		DRAWN BY & DATE		CHECKED BY & DATE		APPROVED BY & DATE		TITLE: R/A B-IN TERMINAL		REVISE ON CAD ONLY
		4 PLACES ±0. ±.		3 PLACES ±0. ±.		2 PLACES ±0. ±.		1 PLACE ±0.3 ±.		
		ANGULAR: ± 1 °		CAD FILENAME SD35021.DGN		MATERIAL NO. SEE TABLE		DRAWING NO. SD-35021-001		SHEET NO. 10F1
DRAFT WHERE APPLICABLE MUST REMAIN WITHIN DIMENSIONS				THIS DRAWING CONTAINS INFORMATION THAT IS PROPRIETARY TO MOLEX INCORPORATED AND SHOULD NOT BE USED WITHOUT WRITTEN PERMISSION.						SIZE B

MX-A3

DO NOT SCALE DRAWING  
DIMENSION IN METRIC

PROJECT NO. SIMILAR ITEM DWG. NO.  
35021-1\*\*\* SD 35021-1\*\*\*



NOTE

1. MATERIAL  
1) BRASS (CDA 260)  
2) PHOSPHOR BRONZE (CDA 510)
2. PLATING  
1) PRE PLATED - TIN OVER COPPER  
2) POST PLATED - TIN/LEAD OVER COPPER
3. USED HOUSING : 35022-00\*\* / 35023-00\*\*

POST-PLATED	PHOS. BRON.	AWG #24-#30	1.8	1.9	R0.4	0.85	35021-1310
PRE-PLATED	PHOS. BRON.	(INS. DIA: Ø 1.5 MAX.)	1.8	1.9	R0.4	0.85	35021-1301
	BRASS						35021-1201
	PHOS. BRON.						35021-1101
	BRASS	AWG #22-#30	2.5	2.5	R0.7	1.05	35021-1001
	PHOS. BRON.	(INS. DIA: Ø 1.9 MAX.)					35021-1110
PLATING	MATERIAL	WIRE RANGE	D	C	B	A	ENG. NO.

REVISED  
EC NO. KOR1998-0091  
DRWN: HSSHIN(980609)  
CHK: JKOH  
APPR: CWLEE

REVISIONS  
C  
DESCRIPTION  
CRITICAL  
MAJOR

QUALITY SYMBOLS  
GENERAL TOLERANCES:  
(UNLESS SPECIFIED)  
MIN INCH  
4 PLACES ±.  
3 PLACES ±.  
2 PLACES ±.  
1 PLACE ±.  
ANGULAR: ± 1°

SCALE DESIGN UNITS  
15-1 DIM INCH  
DRAWN BY & DATE  
HSSHIN  
CHECKED BY & DATE  
JKOH  
APPROVED BY & DATE  
CWLEE

TITLE: R/A B-IN TERMINAL  
THIRD ANGLE PROJECTION  
DIMENSIONS: INCH, MM, INCH, MM, INCH, MM, INCH, MM  
SHT REV  
REVISE ON CAD ONLY  
MATERIAL NO. 35021-1\*\*\*  
DRAWING NO. SD 35021-1\*\*\*  
SHEET NO. 10F1  
SIZE  
MATERIAL NO. 35021-1\*\*\*  
DRAWING NO. SD 35021-1\*\*\*  
SHEET NO. 10F1  
SIZE

MATERIAL NO. 35021-1\*\*\*  
DRAWING NO. SD 35021-1\*\*\*  
SHEET NO. 10F1  
SIZE

MOLEX INCORPORATED  
KOREA

MX-AB