

PLEASE CHECK WWW.MOLEX.COM FOR LATEST PART INFORMATION

Part Number: [0026034111](#)
Status: **Active**
Overview: [kk](#)
Description: 3.96mm (.156") Pitch KK@ Crimp Terminal Housing - Use With Trifurcon® Terminals, Friction Ramp, 11 Circuits

Documents:

3D Model	Product Specification PS-40-02 (PDF)
Drawing (PDF)	RoHS Certificate of Compliance (PDF)

Agency Certification

CSA LR19980

General

Product Family	Crimp Housings
Series	6442
Overview	kk
Product Name	KK@

Physical

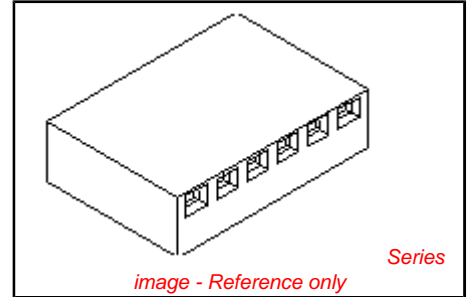
Circuits (maximum)	11
Color - Resin	Natural
Flammability	94V-2
Gender	Female
Glow-Wire Compliant	No
Lock to Mating Part	Yes
Material - Resin	Nylon
Number of Rows	1
Packaging Type	Bag
Panel Mount	No
Pitch - Mating Interface (in)	0.156 In
Pitch - Mating Interface (mm)	3.96 mm
Stackable	No
Temperature Range - Operating	0°C to +75°C

Material Info

Old Part Number 6442-R11-Z

Reference - Drawing Numbers

Product Specification	PS-40-02
Sales Drawing	SD-6442



EU RoHS

ELV and RoHS Compliant

REACH SVHC

Not Reviewed

Halogen-Free

Status

Not Reviewed

Need more information on product environmental compliance?

Email productcompliance@molex.com
 For a multiple part number RoHS Certificate of Compliance, [click here](#)

Please visit the [Contact Us](#) section for any non-product compliance questions.

China RoHS



Search Parts in this Series

[6442Series](#)

Mates With

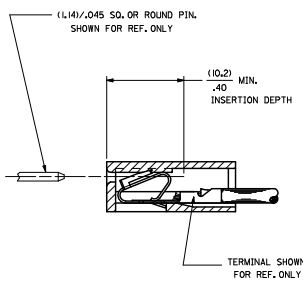
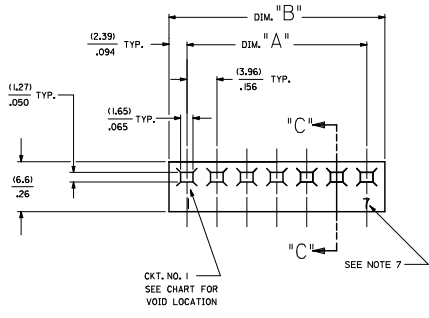
Molex 3.96mm (.156") pitch KK@ headers

Use With

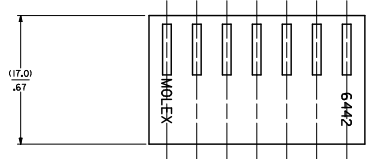
[6838](#) and [7258](#) KK@ Trifurcon crimp terminals

PLEASE CHECK WWW.MOLEX.COM FOR LATEST PART INFORMATION

20 19 18 17 16 15 14 13 12 11 10 9 8 7 6 5 4 3 2 1



SECTION "C-C"



NO. OF CKT'S.	DIM. A	DIM. B
1	-----	(4.78±.18)
2	(3.96±.13)	(8.74±.18)
3	(7.92±.13)	(12.70±.18)
4	(11.89±.13)	(16.66±.18)
5	(15.85±.13)	(20.62±.18)
6	(19.81±.13)	(24.59±.18)
7	(23.77±.13)	(28.55±.18)
8	(27.74±.25)	(32.51±.30)
9	(31.70±.25)	(36.47±.30)
10	(35.66±.25)	(40.44±.30)
11	(39.62±.25)	(44.40±.30)
12	(43.59±.25)	(48.36±.30)
13	(47.55±.30)	(52.32±.36)
14	(51.51±.36)	(56.29±.41)
15	(55.47±.36)	(60.25±.41)
16	(59.44±.36)	(64.21±.41)
17	(63.40±.36)	(68.17±.41)
18	(67.36±.36)	(72.14±.41)
19	(71.32±.36)	(76.10±.41)
20	(75.29±.46)	(80.06±.51)
21	(79.25±.46)	(84.02±.51)
22	(83.21±.46)	(87.99±.51)
23	(87.17±.46)	(91.95±.51)
24	(91.14±.46)	(95.91±.51)
	(3.588±.018)	(3.776±.020)

- NOTES:
 1. MATERIAL A: NYLON 6/6 UL94V-2. COLOR: NATURAL
 2. FINISH: N/A
 3. THIS PART COMPLIES WITH PRODUCT SPECIFICATION PS-40-02.
 4. SEE SHEET 2 FOR OPTIONS.
 5. HOUSING SHOWN ABOVE IS STANDARD HOUSING WITH NO OPTIONS.
 6. THIS HOUSING FOR USE WITH TERMINAL NO.
 6438-*, (19-22 GA.) WITH (2.79)/.110 MAX. INSULATION DIA.
 6838-*, (19-24 GA.) WITH (2.79)/.110 MAX. INSULATION DIA.
 7238-*, (22-26 GA.) WITH (1.65)/.065 MAX. INSULATION DIA.
 7. CIRCUIT SIZE MOLDED ON 4 THRU 24 CIRCUIT HOUSINGS ONLY.
 8. THIS PART CONFORMS TO CLASS B REQUIREMENTS OF COSMETIC SPECIFICATION PS-45499-002.

HOUSING OPTIONS

CODE	HOOKS	SIDE HOOKS	RAMP
BLANK	NONE	NONE	NONE
A	NONE	YES	NONE
R	NONE	NONE	FRICTION
B	NONE	NONE	TYPE B
C	NONE	NONE	TYPE C

6442- * N * - * - *

VOLTAGE RATING OPTION
 BLANK-NONE
 V= '250 VAC' ON HOUSING

MAT'L. OPTION
 BLANK= MATERIAL A (SEE NOTE 1)

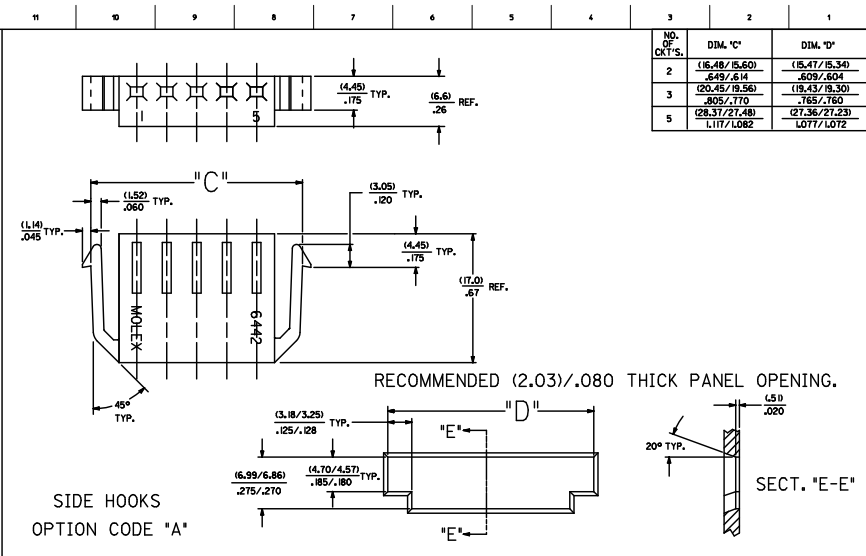
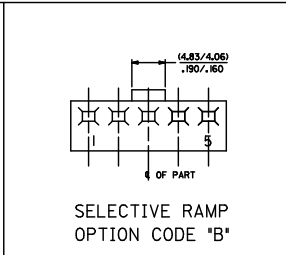
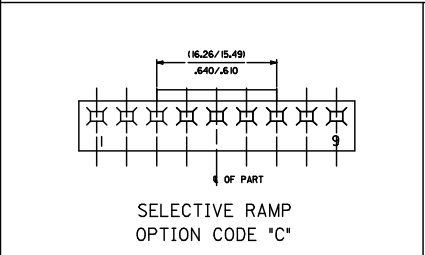
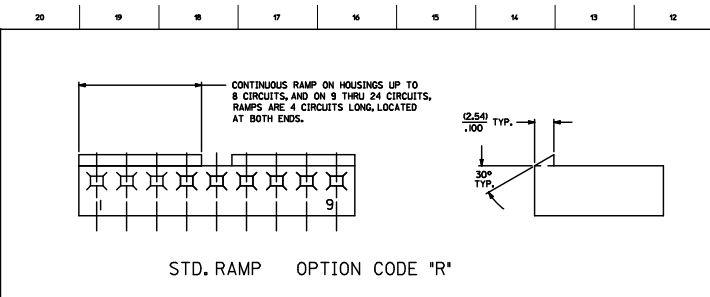
MOLDED VOID CODE
 Z=NO VOIDS
 A=CKT. 1 VOID,
 B=CKT. 2 VOID, ETC.
 51=1ST MULTIPLE VOID,
 52=2ND MULTIPLE VOID, ETC.

NO. OF CKT'S. 4 J
3 J
2 J
1 J

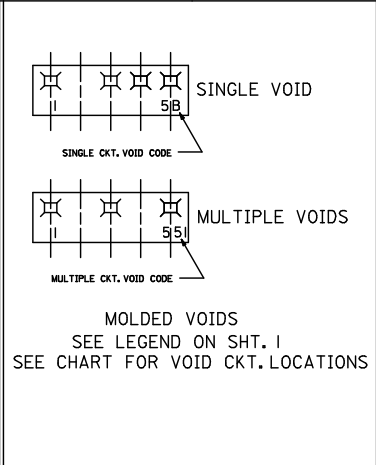
REMOVED OPTION SEE NOTE 1 J DRINKWATER CHROSSOUSEK APPROVALS 2006/07/13 2006/07/13 2006/07/13	QUALITY SYMBOLS	GENERAL TOLERANCES (UNLESS SPECIFIED)	DIMENSION STYLE	SCALE	DESIGN UNITS	THIRD ANGLE PROJECTION
	4 PLACES ±.010	MIN INCH	MM/IN	---	INCH	☐
	3 PLACES ±.010	±.010	POLGAR	1986/12/03	DATE	DATE
	2 PLACES ±0.25	±.014	PAIEL	1986/12/03	DATE	DATE
1 PLACE ±0.36	±.010	ANGULAR ±1/2°	APPROVED BY	DATE	DATE	DATE
			LENZ	1986/12/03		
		DRAFT WHERE APPLICABLE MUST REMAIN WITHIN DIMENSIONS	MATERIAL NO.	DOCUMENT NO.		
			SEE CHART	SD-6442		
			THIS DRAWING CONTAINS INFORMATION THAT IS PROPRIETARY TO MOLEX INCORPORATED AND SHOULD NOT BE USED WITHOUT WRITTEN PERMISSION			

MOLEX MOLEX INCORPORATED

SHEET NO. 1 OF 4



NO. OF CTS.	DIM. 'C'	DIM. 'D'
2	.1648/.15.60	(.15.47/.15.34)
3	.649/.614	.609/.604
5	(20.45/19.36)	(19.43/18.30)
	.895/.770	.765/.760
	(28.37/27.48)	(27.36/27.23)
	L117/L082	L077/L072



QUALITY SYMBOLS	GENERAL TOLERANCES (UNLESS SPECIFIED)		DIMENSION STYLE	SCALE	DESIGN UNITS	THIRD ANGLE PROJECTION
	MIN	INCH				
▽=0	4 PLACES ± .010	± .010	MM/IN	---	INCH	☉
▽=0	3 PLACES ± .025	± .014				
	2 PLACES ± 0.36	± .---				
	1 PLACE ± 0.36	± .---				
	ANGULAR ± 1/2°					

SEE SHEET 1	DATE	DRAWN BY	DATE	TITLE
REV. 1	2006/07/19	POLGAR	1986/12/05	KK (3.96)/156 TRIFURCON CRIMP TERMINAL HOUSING 6442 SERIES
REV. 2	2006/07/19	CHECKED BY	DATE	
REV. 3	2006/07/19	PATEL	1986/12/05	
REV. 4	2006/07/19	APPROVED BY	DATE	
		LENZ	1986/12/05	

MATERIAL NO.	DOCUMENT NO.	SHEET NO.
SEE CHART	SD-6442	2 OF 4

THIS DRAWING CONTAINS INFORMATION THAT IS PROPRIETARY TO MOLEX INCORPORATED AND SHOULD NOT BE USED WITHOUT WRITTEN PERMISSION

15-frame_D.P.M.E.T
Rev. E 2006/04/15

6442-N**			6442-RN**			6442-RN**			6442-RND**			6442-BN**			6442-CN**		
PART NO.	ENG. NO.	VOIDS	PART NO.	ENG. NO.	VOIDS	PART NO.	ENG. NO.	VOIDS	PART NO.	ENG. NO.	VOIDS	PART NO.	ENG. NO.	VOIDS	PART NO.	ENG. NO.	VOIDS
26-03-3011	6442-1-Z		26-03-4011	6442-R1-Z													
26-03-3021	6442-2-Z		26-03-4020	6442-R2-Z					26-03-7021	6442-R10-Z			6442-B1-Z				
26-03-3031	6442-3-Z		26-03-4030	6442-R3-Z					26-03-7031	6442-R30-Z			6442-B2-Z				
26-03-3041	6442-4-Z		26-03-4041	6442-R4-Z					26-03-7041	6442-R40-Z			6442-B3-Z				
26-03-3051	6442-5-Z		26-03-4050	6442-R5-Z						6442-R50-Z			6442-B4-Z				
26-03-3061	6442-6-Z		26-03-4061	6442-R6-Z						6442-R60-Z			6442-B5-Z				
26-03-3071	6442-7-Z		26-03-4070	6442-R7-Z					26-03-7071	6442-R70-Z			6442-B6-Z				
26-03-3081	6442-8-Z		26-03-4081	6442-R8-Z						6442-R80-Z			6442-B7-Z				
26-03-3091	6442-9-Z		26-03-4090	6442-R9-Z					26-03-7091	6442-R90-Z			6442-B8-Z				
26-03-3101	6442-10-Z		26-03-4101	6442-R10-Z						6442-R100-Z			6442-B9-Z				
26-03-3111	6442-11-Z		26-03-4111	6442-R11-Z						6442-R110-Z			6442-B10-Z				
26-03-3121	6442-12-Z		26-03-4121	6442-R12-Z				26-03-7121	6442-R120-Z			6442-B11-Z					
26-03-3131	6442-13-Z		26-03-4131	6442-R13-Z					6442-R130-Z			6442-B12-Z					
26-03-3141	6442-14-Z		26-03-4141	6442-R14-Z					6442-R140-Z			6442-B13-Z					
26-03-3151	6442-15-Z		26-03-4151	6442-R15-Z					6442-R150-Z			6442-B14-Z					
26-03-3161	6442-16-Z		26-03-4161	6442-R16-Z					6442-R160-Z			6442-B15-Z					
26-03-3171	6442-17-Z		26-03-4171	6442-R17-Z					6442-R170-Z			6442-B16-Z					
26-03-3181	6442-18-Z		26-03-4181	6442-R18-Z				26-03-7171	6442-R170-Z			6442-B17-Z					
26-03-3191	6442-19-Z		26-03-4191	6442-R19-Z					6442-R180-Z			6442-B18-Z					
26-03-3201	6442-20-Z		26-03-4201	6442-R20-Z					6442-R190-Z			6442-B19-Z					
26-03-3211	6442-21-Z		26-03-4211	6442-R21-Z					6442-R200-Z			6442-B20-Z					
26-03-3221	6442-22-Z		26-03-4221	6442-R22-Z					6442-R210-Z			6442-B21-Z					
26-03-3231	6442-23-Z		26-03-4231	6442-R23-Z					6442-R220-Z			6442-B22-Z					
26-03-3241	6442-24-Z		26-03-4241	6442-R24-Z					6442-R230-Z			6442-B23-Z					
	6442-15-B	2	26-03-4043	6442-R4-C	3				26-03-7042	6442-R40-B	2		6442-B24-Z				
	6442-9-B	2	26-03-4053	6442-R5-E	5				26-03-7072	6442-R10-C	3						
	6442-12-F	6	26-03-4065	6442-R6-E	5				26-03-7092	6442-R90-B	2						
	6442-7-5	1,7	26-03-4086	6442-R8-F	6				26-03-7093	6442-R90-E	5						
	6442-9-5	1,9	26-03-4097	6442-R9-G	7				26-03-7122	6442-R120-E	5						
	6442-9-52	2,9	26-03-4108	6442-R10-H	8				26-03-7172	6442-R170-E	5						
	6442-8-B	2	26-03-4120	6442-R12-J	10												
	6442-8-F	6	26-03-4157	6442-R15-G	7												
	6442-10-D	4	26-03-4073	6442-R17-C	3												
	6442-9-B	2	26-03-4094	6442-R9-D	4												
	6442-10-B	2	26-03-4096	6442-R9-F	6												
	6442-5-C	3	26-03-4092	6442-R9-B	2												
	6442-13-B	2	26-03-4064	6442-R6-D	4												
	6442-11-E	5	26-03-4075	6442-R11-E	5												
			26-03-4095	6442-R9-E	5												
			26-03-4085	6442-R8-E	5												
			26-03-4072	6442-R11-B	2												
			26-03-4012	6442-R7-B	2												
			26-03-4063	6442-R6-C	3												
			26-03-4062	6442-R6-B	2												
			26-03-4125	6442-R12-E	5												
			26-03-4123	6442-R12-C	3												
			26-03-4016	6442-R11-F	6												
			26-03-4129	6442-R12-I	9												
			26-03-4143	6442-R14-C	3												
			26-03-4093	6442-R9-C	3												
			26-03-4094	6442-R9-D	4												
			26-03-4052	6442-R5-B	2												
			26-03-4103	6442-R10-C	3												
			26-03-4042	6442-R4-B	2												
			26-03-4106	6442-R10-F	6												
				6442-R12-F	6												
			26-03-4112	6442-R11-B	2												
				6442-R13-B	2												
			26-03-4175	6442-R17-E	5												
			26-03-4102	6442-R10-B	2												
			26-03-4032	6442-R3-B	2												
			26-03-4082	6442-R8-B	2												
				6442-R7-5	1,7												
				6442-R9-5	1,9												
			26-03-4099	6442-R9-52	2,9												
			26-03-4149	6442-R14-M	13												
				6442-R4-A	1												
			26-03-4152	6442-R15-N	14												
				6442-R10-5	1,10												
			26-03-4083	6442-R10-8-C	3												

UPDATE TITLE LUC LEE 2005-04-8 J. DRINKWATER 2006/07/13 CHIKO SUDO 2006/07/13 APPROVALS REV DESCRIPTION 2006/06/05	QUALITY SYMBOLS	GENERAL TOLERANCES (UNLESS SPECIFIED)	DIMENSION STYLE	SCALE	DESIGN UNITS	THIRD ANGLE PROJECTION	
	4 PLACES ± --- ± --- 3 PLACES ± --- ± --- 2 PLACES ± --- ± --- 1 PLACE ± --- ± ---	mm INCH POLGAR PATEL LENZ	DRAWN BY DATE 1986/12/02 CHECKED BY DATE 1986/12/02 APPROVED BY DATE 1986/12/02	MM/IN	---	INCH	<input checked="" type="checkbox"/> THIRD ANGLE <input type="checkbox"/> FIRST ANGLE
	ANGULAR ±1/2° DRAFT WHERE APPLICABLE MUST REMAIN WITHIN DIMENSIONS	MATERIAL NO. SEE CHART	DOCUMENT NO. SD-6442	KK (3.96)/156 TRIFURCON CRIMP TERMINAL HOUSING 6442 SERIES MOLEX INCORPORATED			
	SHEET NO. 3 OF 4		THIS DRAWING CONTAINS INFORMATION THAT IS PROPRIETARY TO MOLEX INCORPORATED AND SHOULD NOT BE USED WITHOUT WRITTEN PERMISSION				