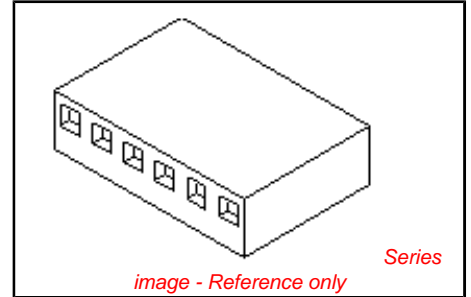


PLEASE CHECK WWW.MOLEX.COM FOR LATEST PART INFORMATION

Part Number: [0022012155](#)
Status: **Active**
Overview: [kk](#)
Description: 2.54mm (.100") Pitch KK@ Crimp Terminal Housing, Friction Ramp, 15 Circuits, Use with 4809

Documents:

3D Model	Product Specification PS-99020-0088 (PDF)
Drawing (PDF)	RoHS Certificate of Compliance (PDF)
Product Specification PS-10-07 (PDF)	



Agency Certification

CSA	LR19880
UL	E29179

General

Product Family	Crimp Housings
Series	6471
Overview	kk
Product Name	KK@

Physical

Circuits (maximum)	15
Color - Resin	Natural (White)
Flammability	94V-0
Gender	Female
Glow-Wire Compliant	No
Lock to Mating Part	Yes
Material - Resin	Nylon
Number of Rows	1
Packaging Type	Bag
Panel Mount	No
Pitch - Mating Interface (in)	0.100 In
Pitch - Mating Interface (mm)	2.54 mm
Polarized to Mating Part	Yes
Stackable	No
Temperature Range - Operating	0°C to +75°C

Solder Process Data

Duration at Max. Process Temperature (seconds)	5
Lead-free Process Capability	Wave Capable (TH only)
Max. Cycles at Max. Process Temperature	1
Process Temperature max. C	230

Material Info

Old Part Number	6471-15(l)
-----------------	------------

Reference - Drawing Numbers

Product Specification	PS-10-07, PS-99020-0088
Sales Drawing	SD-6471-N*-, SDE-6471-N*-

EU RoHS

ELV and RoHS Compliant

REACH SVHC

Not Reviewed

Halogen-Free

Status

Halogen-Free

Need more information on product environmental compliance?

Email productcompliance@molex.com
 For a multiple part number RoHS Certificate of Compliance, [click here](#)

Please visit the [Contact Us](#) section for any non-product compliance questions.

China RoHS



Search Parts in this Series

[6471Series](#)

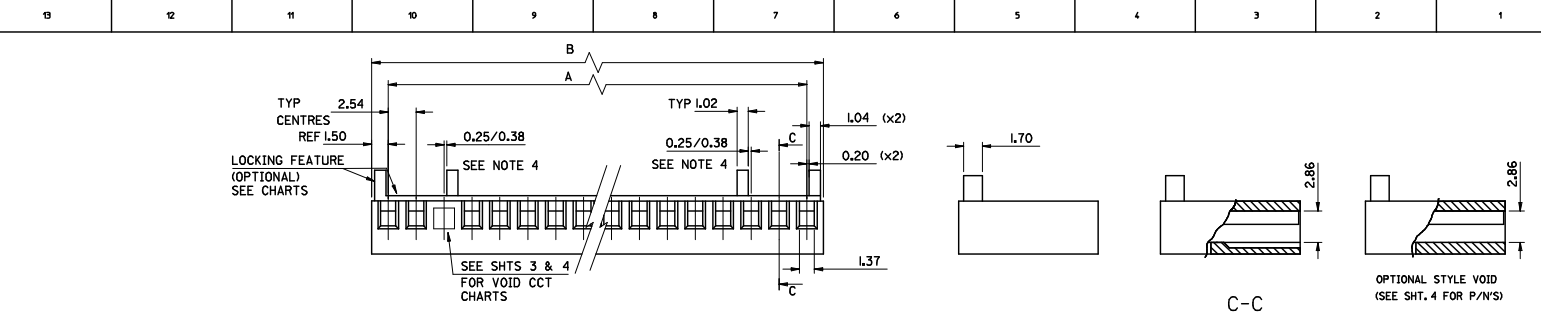
Mates With

2.54mm (.100") Pitch KK @ PCB Headers

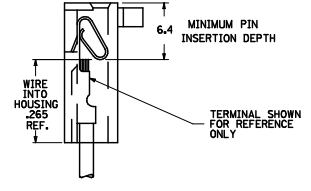
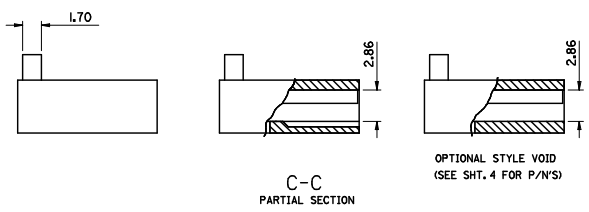
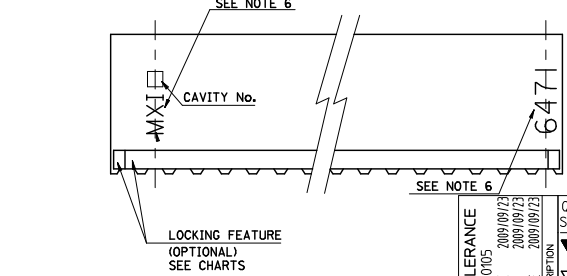
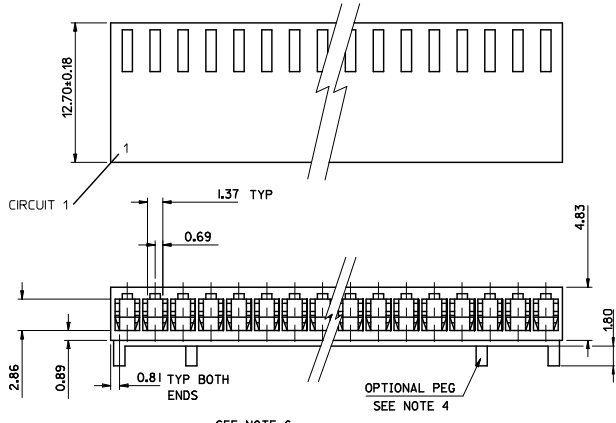
Use With

4809 KK@ Crimp Terminal

PLEASE CHECK WWW.MOLEX.COM FOR LATEST PART INFORMATION



28	68.58±0.35	71.58±0.35
27	66.04±0.35	69.04±0.35
26	63.50±0.35	66.50±0.35
25	60.96±0.35	63.96±0.35
24	58.42±0.35	61.42±0.35
23	55.88±0.35	58.88±0.35
22	53.34±0.35	56.34±0.35
21	50.80±0.35	53.80±0.35
20	48.26±0.35	51.26±0.35
19	45.72±0.35	48.72±0.35
18	43.18±0.35	46.18±0.35
17	40.64±0.35	43.64±0.35
16	38.10±0.35	41.10±0.35
15	35.56±0.35	38.56±0.35
14	33.02±0.35	36.02±0.35
13	30.48±0.35	33.48±0.35
12	27.94±0.35	30.94±0.35
11	25.40±0.35	28.40±0.35
10	22.86±0.35	25.86±0.35
9	20.32±0.35	23.32±0.35
8	17.78±0.35	20.78±0.35
7	15.24±0.35	18.24±0.35
6	12.70±0.15	15.70±0.15
5	10.16±0.15	13.16±0.15
4	7.62±0.15	10.62±0.15
3	5.08±0.15	8.08±0.15
2	2.54±0.15	5.54±0.15
No. OF CCTS	DIM A	DIM B



- NOTES:
- MATERIAL: POLYAMIDE (PA66/6), UL94 V-0
COLOR: NATURAL PER THE FOLLOWING 89992-0086
 - FOR USE WITH ANTI-FISH HOOKING TERMINAL No. 4809-*
 - SEE SHT. 3 FOR PARTS WITH VOIDS.
 - OPTIONAL CENTRE PEGS TO BE USED ON Tact & LARGER SIZES ONLY. SEE SHT. 3 FOR CHARTED ENG. No.'S.
 - PART No. PRECEDED BY CODE LETTER DESIGNATES MFG. LOC'N. I=IRELAND
- E-6471-N-***
- No. OF CCTS
- BLANK = STD. VOID
 - B = OPT. STYLE VOID
 - VOID CCT LOC'N.
- BLANK NO LOCKING RAMP
- HOUSING STYLE
- I = LOCKING RAMP & POL. RIB
 - S = OPT. PEG
 - R = LOCKING RAMP ONLY
6. 'MX*' MARK AND PART I.D. '6471' APPEAR EITHER ON FRONT OR BACK SIDE. SEE END VIEW FOR SIDE ORIENTATION.

ADJUST TOLERANCE EC NO: E2010-0105 DRAWN: BMAGUIRE 2009/09/23 CHKD: 2009/09/23 APPR: BMAGUIRE 2009/09/23 REV	QUALITY SYMBOLS	GENERAL TOLERANCES (UNLESS SPECIFIED)	DIMENSION STYLE	SCALE	DESIGN UNITS	THIRD ANGLE PROJECTION
	▽=0	4 PLACES ± --- ± --- SF	MM ONLY	1:1	METRIC	
	▽=0	3 PLACES ± --- ± --- SF				
		2 PLACES ± 0.15 ± --- SF				
		1 PLACE ± 0.25 ± --- SF				
		ANGULAR ± --- °				
		DRAFT WHERE APPLICABLE MUST REMAIN WITHIN DIMENSIONS	SEE CHART			
			MATERIAL NO.	DOCUMENT NO.		SHEET NO.
				SD-6471-N-***		1 OF 5
			THIS DRAWING CONTAINS INFORMATION THAT IS PROPRIETARY TO MOLEX INCORPORATED AND SHOULD NOT BE USED WITHOUT WRITTEN PERMISSION			

PART NO.
SEE CHART
DWG. NO.
SD-6471-N-***

PART No.	ENG No.	No. OF CIRCUITS	RAMP & POL. RIBS	DIM. A	DIM. B
22-01-2025	E-6471-021	2	YES	↑	↑
↑	-2035	3	↑		
	-2045	4			
	-2055	5			
	-2065	6			
	-2075	7			
	-2085	8			
	-2095	9			
	-2105	10			
	-2115	11			
	-2125	12			
	-2135	13			
	-2145	14			
	-2155	15			
	-2165	16			
	-2175	17			
	-2185	18			
	-2195	19			
	-2205	20			
	-2215	21			
	-2225	22			
	-2235	23			
	22-01-2245	24			
	NOT TOOLED	25			
	22-01-2265	26			
	NOT TOOLED	27			
	22-01-2285	E-6471-281	28	YES	↓

SEE SHEET I FOR DIMENSION

SEE SHEET I FOR DIMENSION

PART No.	ENG No.	No. OF CIRCUITS	LOCKING FEATURE	DIM. A	DIM. B
22-01-2026	E-6471-2	2	NO	↑	↑
↑	-2036	3	↑		
	-2046	4			
	-2056	5			
	-2066	6			
	-2076	7			
	-2086	8			
	-2096	9			
	-2106	10			
	-2116	11			
	-2126	12			
	-2136	13			
	-2146	14			
	-2156	15			
	-2166	16			
	-2176	17			
	-2186	18			
	-2196	19			
	-2206	20			
	-2216	21			
	22-01-2226	22			
	NOT TOOLED	23			
	22-01-2246	24			
	NOT TOOLED	25			
	22-01-2266	26			
	22-01-2276	27			
	22-01-2286	E-6471-28	28	NO	↓

SEE SHEET I FOR DIMENSION

SEE SHEET I FOR DIMENSION

REVISE ONLY ON CAD SYSTEM		SH.	REV.
CAD/CAM FILENAME SD-6471-N-*.S02	THIS DRAWING CONTAINS INFORMATION THAT IS PROPRIETARY TO MOLEX INC. & SHOULD NOT BE USED WITHOUT WRITTEN PERMISSION		
TITLE 2.54 mm KK Crp Trm Hsg II			
MOLEX EUROPE		SHEET NO. 20F	DATE 15/07/00
PART NO. SEE CHART	DWG. NO. SD-6471-N-***	SIZE B	

A SEE SHEET I

REVISIONS

DIMENSIONS SHOWN (METRIC) INCH	DRWG BY	SF
UNLESS OTHERWISE SPECIFIED TOLERANCES: ANGULAR ± 8	CHK'D BY	
	APP'D BY	
DESIGN DIMENSION (PRIMARY) <input type="checkbox"/> (MM) <input type="checkbox"/> IN.	SCALE	-
EQUIVALENT DIMENSION (SECONDARY) <input type="checkbox"/> (MM) <input type="checkbox"/> IN.		

7132-1283

	10	9	8	7	6	5	4	3	2	1																																																																																																																																																																																																																																																																																																																																																																																																										
F	PART NO. SEE CHART DWG. NO. SD-6471-N-***	<table border="1"> <thead> <tr> <th>PART No.</th> <th>ENG No.</th> <th>No. OF CIRCUITS</th> <th>RAMP & POL. RIBS</th> <th>VOID CCT LOCATION</th> <th>DIM. A</th> <th>DIM. B</th> </tr> </thead> <tbody> <tr><td>22-01-4022</td><td>E-6471-021-02</td><td>2</td><td>YES</td><td>2</td><td>↑</td><td>↑</td></tr> <tr><td>↑ -4032</td><td>↑ -031-02</td><td>3</td><td>↑</td><td>↑</td><td></td><td></td></tr> <tr><td>-4042</td><td>-041-02</td><td>4</td><td></td><td></td><td></td><td></td></tr> <tr><td>-4052</td><td>-051-02</td><td>5</td><td></td><td></td><td></td><td></td></tr> <tr><td>-4062</td><td>-061-02</td><td>6</td><td></td><td></td><td></td><td></td></tr> <tr><td>-4072</td><td>-071-02</td><td>7</td><td></td><td></td><td></td><td></td></tr> <tr><td>-4082</td><td>-081-02</td><td>8</td><td></td><td></td><td></td><td></td></tr> <tr><td>-4092</td><td>-091-02</td><td>9</td><td></td><td></td><td></td><td></td></tr> <tr><td>-4102</td><td>-101-02</td><td>10</td><td></td><td></td><td></td><td></td></tr> <tr><td>-4112</td><td>-111-02</td><td>11</td><td></td><td></td><td></td><td></td></tr> <tr><td>-4122</td><td>-121-02</td><td>12</td><td></td><td></td><td></td><td></td></tr> <tr><td>-4132</td><td>-131-02</td><td>13</td><td></td><td></td><td></td><td></td></tr> <tr><td>-4142</td><td>-141-02</td><td>14</td><td></td><td></td><td></td><td></td></tr> <tr><td>-4152</td><td>-151-02</td><td>15</td><td></td><td></td><td></td><td></td></tr> <tr><td>-4162</td><td>-161-02</td><td>16</td><td></td><td></td><td></td><td></td></tr> <tr><td>-4172</td><td>-171-02</td><td>17</td><td></td><td></td><td></td><td></td></tr> <tr><td>-4182</td><td>-181-02</td><td>18</td><td></td><td></td><td></td><td></td></tr> <tr><td>-4192</td><td>-191-02</td><td>19</td><td></td><td></td><td></td><td></td></tr> <tr><td>-4202</td><td>-201-02</td><td>20</td><td></td><td></td><td></td><td></td></tr> <tr><td>-4212</td><td>-211-02</td><td>21</td><td></td><td></td><td></td><td></td></tr> <tr><td>-4222</td><td>-221-02</td><td>22</td><td></td><td></td><td></td><td></td></tr> <tr><td>-4232</td><td>-231-02</td><td>23</td><td></td><td></td><td></td><td></td></tr> <tr><td>-4242</td><td>-241-02</td><td>24</td><td></td><td></td><td></td><td></td></tr> <tr><td>-4252</td><td>-251-02</td><td>25</td><td></td><td></td><td></td><td></td></tr> <tr><td>-4262</td><td>-261-02</td><td>26</td><td></td><td></td><td></td><td></td></tr> <tr><td>↓ -4272</td><td>↓ -271-02</td><td>27</td><td></td><td></td><td></td><td></td></tr> <tr><td>22-01-4282</td><td>E-6471-281-02</td><td>28</td><td>YES</td><td>2</td><td>↓</td><td>↓</td></tr> </tbody> </table>					PART No.	ENG No.	No. OF CIRCUITS	RAMP & POL. RIBS	VOID CCT LOCATION	DIM. A	DIM. B	22-01-4022	E-6471-021-02	2	YES	2	↑	↑	↑ -4032	↑ -031-02	3	↑	↑			-4042	-041-02	4					-4052	-051-02	5					-4062	-061-02	6					-4072	-071-02	7					-4082	-081-02	8					-4092	-091-02	9					-4102	-101-02	10					-4112	-111-02	11					-4122	-121-02	12					-4132	-131-02	13					-4142	-141-02	14					-4152	-151-02	15					-4162	-161-02	16					-4172	-171-02	17					-4182	-181-02	18					-4192	-191-02	19					-4202	-201-02	20					-4212	-211-02	21					-4222	-221-02	22					-4232	-231-02	23					-4242	-241-02	24					-4252	-251-02	25					-4262	-261-02	26					↓ -4272	↓ -271-02	27					22-01-4282	E-6471-281-02	28	YES	2	↓	↓	<table border="1"> <thead> <tr> <th>PART No.</th> <th>ENG No.</th> <th>No. OF CIRCUITS</th> <th>LOCKING FEATURE</th> <th>VOID CCT LOCATION</th> <th>DIM. A</th> <th>DIM. B</th> </tr> </thead> <tbody> <tr><td>22-01-4021</td><td>E-6471-02-02</td><td>2</td><td>NO</td><td>2</td><td>↑</td><td>↑</td></tr> <tr><td>↑ -4031</td><td>↑ -03-02</td><td>3</td><td>↑</td><td>↑</td><td></td><td></td></tr> <tr><td>-4041</td><td>-04-02</td><td>4</td><td></td><td></td><td></td><td></td></tr> <tr><td>-4051</td><td>-05-02</td><td>5</td><td></td><td></td><td></td><td></td></tr> <tr><td>-4061</td><td>-06-02</td><td>6</td><td></td><td></td><td></td><td></td></tr> <tr><td>-4071</td><td>-07-02</td><td>7</td><td></td><td></td><td></td><td></td></tr> <tr><td>-4081</td><td>-08-02</td><td>8</td><td></td><td></td><td></td><td></td></tr> <tr><td>-4091</td><td>-09-02</td><td>9</td><td></td><td></td><td></td><td></td></tr> <tr><td>-4101</td><td>-10-02</td><td>10</td><td></td><td></td><td></td><td></td></tr> <tr><td>-4111</td><td>-11-02</td><td>11</td><td></td><td></td><td></td><td></td></tr> <tr><td>-4121</td><td>-12-02</td><td>12</td><td></td><td></td><td></td><td></td></tr> <tr><td>-4131</td><td>-13-02</td><td>13</td><td></td><td></td><td></td><td></td></tr> <tr><td>-4141</td><td>-14-02</td><td>14</td><td></td><td></td><td></td><td></td></tr> <tr><td>-4151</td><td>-15-02</td><td>15</td><td></td><td></td><td></td><td></td></tr> <tr><td>-4161</td><td>-16-02</td><td>16</td><td></td><td></td><td></td><td></td></tr> <tr><td>-4171</td><td>-17-02</td><td>17</td><td></td><td></td><td></td><td></td></tr> <tr><td>-4181</td><td>-18-02</td><td>18</td><td></td><td></td><td></td><td></td></tr> <tr><td>-4191</td><td>-19-02</td><td>19</td><td></td><td></td><td></td><td></td></tr> <tr><td>-4201</td><td>-20-02</td><td>20</td><td></td><td></td><td></td><td></td></tr> <tr><td>-4211</td><td>-21-02</td><td>21</td><td></td><td></td><td></td><td></td></tr> <tr><td>-4221</td><td>-22-02</td><td>22</td><td></td><td></td><td></td><td></td></tr> <tr><td>-4231</td><td>-23-02</td><td>23</td><td></td><td></td><td></td><td></td></tr> <tr><td>-4241</td><td>-24-02</td><td>24</td><td></td><td></td><td></td><td></td></tr> <tr><td>-4251</td><td>-25-02</td><td>25</td><td></td><td></td><td></td><td></td></tr> <tr><td>-4261</td><td>-26-02</td><td>26</td><td></td><td></td><td></td><td></td></tr> <tr><td>↓ -4271</td><td>↓ -27-02</td><td>27</td><td></td><td></td><td></td><td></td></tr> <tr><td>22-01-4281</td><td>E-6471-28-02</td><td>28</td><td>NO</td><td>2</td><td>↓</td><td>↓</td></tr> </tbody> </table>					PART No.	ENG No.	No. OF CIRCUITS	LOCKING FEATURE	VOID CCT LOCATION	DIM. A	DIM. B	22-01-4021	E-6471-02-02	2	NO	2	↑	↑	↑ -4031	↑ -03-02	3	↑	↑			-4041	-04-02	4					-4051	-05-02	5					-4061	-06-02	6					-4071	-07-02	7					-4081	-08-02	8					-4091	-09-02	9					-4101	-10-02	10					-4111	-11-02	11					-4121	-12-02	12					-4131	-13-02	13					-4141	-14-02	14					-4151	-15-02	15					-4161	-16-02	16					-4171	-17-02	17					-4181	-18-02	18					-4191	-19-02	19					-4201	-20-02	20					-4211	-21-02	21					-4221	-22-02	22					-4231	-23-02	23					-4241	-24-02	24					-4251	-25-02	25					-4261	-26-02	26					↓ -4271	↓ -27-02	27					22-01-4281	E-6471-28-02	28	NO	2	↓	↓	
		PART No.	ENG No.	No. OF CIRCUITS	RAMP & POL. RIBS	VOID CCT LOCATION	DIM. A	DIM. B																																																																																																																																																																																																																																																																																																																																																																																																												
22-01-4022	E-6471-021-02	2	YES	2	↑	↑																																																																																																																																																																																																																																																																																																																																																																																																														
↑ -4032	↑ -031-02	3	↑	↑																																																																																																																																																																																																																																																																																																																																																																																																																
-4042	-041-02	4																																																																																																																																																																																																																																																																																																																																																																																																																		
-4052	-051-02	5																																																																																																																																																																																																																																																																																																																																																																																																																		
-4062	-061-02	6																																																																																																																																																																																																																																																																																																																																																																																																																		
-4072	-071-02	7																																																																																																																																																																																																																																																																																																																																																																																																																		
-4082	-081-02	8																																																																																																																																																																																																																																																																																																																																																																																																																		
-4092	-091-02	9																																																																																																																																																																																																																																																																																																																																																																																																																		
-4102	-101-02	10																																																																																																																																																																																																																																																																																																																																																																																																																		
-4112	-111-02	11																																																																																																																																																																																																																																																																																																																																																																																																																		
-4122	-121-02	12																																																																																																																																																																																																																																																																																																																																																																																																																		
-4132	-131-02	13																																																																																																																																																																																																																																																																																																																																																																																																																		
-4142	-141-02	14																																																																																																																																																																																																																																																																																																																																																																																																																		
-4152	-151-02	15																																																																																																																																																																																																																																																																																																																																																																																																																		
-4162	-161-02	16																																																																																																																																																																																																																																																																																																																																																																																																																		
-4172	-171-02	17																																																																																																																																																																																																																																																																																																																																																																																																																		
-4182	-181-02	18																																																																																																																																																																																																																																																																																																																																																																																																																		
-4192	-191-02	19																																																																																																																																																																																																																																																																																																																																																																																																																		
-4202	-201-02	20																																																																																																																																																																																																																																																																																																																																																																																																																		
-4212	-211-02	21																																																																																																																																																																																																																																																																																																																																																																																																																		
-4222	-221-02	22																																																																																																																																																																																																																																																																																																																																																																																																																		
-4232	-231-02	23																																																																																																																																																																																																																																																																																																																																																																																																																		
-4242	-241-02	24																																																																																																																																																																																																																																																																																																																																																																																																																		
-4252	-251-02	25																																																																																																																																																																																																																																																																																																																																																																																																																		
-4262	-261-02	26																																																																																																																																																																																																																																																																																																																																																																																																																		
↓ -4272	↓ -271-02	27																																																																																																																																																																																																																																																																																																																																																																																																																		
22-01-4282	E-6471-281-02	28	YES	2	↓	↓																																																																																																																																																																																																																																																																																																																																																																																																														
PART No.	ENG No.	No. OF CIRCUITS	LOCKING FEATURE	VOID CCT LOCATION	DIM. A	DIM. B																																																																																																																																																																																																																																																																																																																																																																																																														
22-01-4021	E-6471-02-02	2	NO	2	↑	↑																																																																																																																																																																																																																																																																																																																																																																																																														
↑ -4031	↑ -03-02	3	↑	↑																																																																																																																																																																																																																																																																																																																																																																																																																
-4041	-04-02	4																																																																																																																																																																																																																																																																																																																																																																																																																		
-4051	-05-02	5																																																																																																																																																																																																																																																																																																																																																																																																																		
-4061	-06-02	6																																																																																																																																																																																																																																																																																																																																																																																																																		
-4071	-07-02	7																																																																																																																																																																																																																																																																																																																																																																																																																		
-4081	-08-02	8																																																																																																																																																																																																																																																																																																																																																																																																																		
-4091	-09-02	9																																																																																																																																																																																																																																																																																																																																																																																																																		
-4101	-10-02	10																																																																																																																																																																																																																																																																																																																																																																																																																		
-4111	-11-02	11																																																																																																																																																																																																																																																																																																																																																																																																																		
-4121	-12-02	12																																																																																																																																																																																																																																																																																																																																																																																																																		
-4131	-13-02	13																																																																																																																																																																																																																																																																																																																																																																																																																		
-4141	-14-02	14																																																																																																																																																																																																																																																																																																																																																																																																																		
-4151	-15-02	15																																																																																																																																																																																																																																																																																																																																																																																																																		
-4161	-16-02	16																																																																																																																																																																																																																																																																																																																																																																																																																		
-4171	-17-02	17																																																																																																																																																																																																																																																																																																																																																																																																																		
-4181	-18-02	18																																																																																																																																																																																																																																																																																																																																																																																																																		
-4191	-19-02	19																																																																																																																																																																																																																																																																																																																																																																																																																		
-4201	-20-02	20																																																																																																																																																																																																																																																																																																																																																																																																																		
-4211	-21-02	21																																																																																																																																																																																																																																																																																																																																																																																																																		
-4221	-22-02	22																																																																																																																																																																																																																																																																																																																																																																																																																		
-4231	-23-02	23																																																																																																																																																																																																																																																																																																																																																																																																																		
-4241	-24-02	24																																																																																																																																																																																																																																																																																																																																																																																																																		
-4251	-25-02	25																																																																																																																																																																																																																																																																																																																																																																																																																		
-4261	-26-02	26																																																																																																																																																																																																																																																																																																																																																																																																																		
↓ -4271	↓ -27-02	27																																																																																																																																																																																																																																																																																																																																																																																																																		
22-01-4281	E-6471-28-02	28	NO	2	↓	↓																																																																																																																																																																																																																																																																																																																																																																																																														
E																																																																																																																																																																																																																																																																																																																																																																																																																				
D																																																																																																																																																																																																																																																																																																																																																																																																																				
C																																																																																																																																																																																																																																																																																																																																																																																																																				
B																																																																																																																																																																																																																																																																																																																																																																																																																				
A																																																																																																																																																																																																																																																																																																																																																																																																																				

SEE SHEET I.	REVISIONS	DIMENSIONS SHOWN (METRIC) INCH	DRWG BY	REVISE ONLY ON CAD SYSTEM		SHL	REV.
		UNLESS OTHERWISE SPECIFIED TOLERANCES: ANGULAR ± 8	SF	THIS DRAWING CONTAINS INFORMATION THAT IS PROPRIETARY TO MOLEX INC. & SHOULD NOT BE USED WITHOUT WRITTEN PERMISSION			
		3 PLACE ± .	CHK'D BY	TITLE			
		2 PLACE ± .	APP'D BY	2.54 mm KK Crp Trm Hsg II			
		DRAFT WHERE APPL (CABLE MUST REMAIN WITHIN DIMENSIONS)	SCALE	MOLEX EUROPE		SHEET NO.	DATE
		DESIGN DIMENSION (PRIMARY) <input type="checkbox"/> (MM) <input type="checkbox"/> IN.	-	SEE CHART		30F	13/07/00
		EQUIVALENT DIMENSION (SECONDARY) <input type="checkbox"/> (MM) <input type="checkbox"/> IN.		PART NO. SD-6471-N-***		SIZE	B

PART NO.
SEE CHART
DWG. NO.
SD-6471-N-***

HOUSING WITH OPTIONAL PEGS

PART No.	ENG No.	No. OF CIRCUITS	RAMP & POL. RIBS	DIM. A	DIM. B
NOT TOOLED	E-6471-7S	7	YES	↑	↑
↑	↑	↑	↑	↑	↑
	-8S	8			
	-9S	9			
	-10S	10			
	-11S	11			
	-12S	12			
	-13S	13			
	-14S	14			
	-15S	15			
	-16S	16			
	-17S	17			
	-18S	18			
	-19S	19			
	-20S	20			
	-21S	21			
	-22S	22			
	-23S	23			
	-24S	24			
	-25S	25			
	-26S	26			
	-27S	27			
NOT TOOLED	E-6471-28S	28	YES	↓	↓

SEE SHEET I FOR DIMENSION

PART No.	ENG No.	No. OF CIRCUITS	RAMP & POL. RIBS	VOID CCT LOCATION	DIM. A	DIM. B
22-01-4123	E-6471-12-11	12	NO	11	↑	↑
22-01-4124	-121-11	12	YES	11	↑	↑
NOT TOOLED	-24-01	24	NO	1		
NOT TOOLED	-241-01	24	YES	1		
22-01-6132	-13-51	13	NO	2 & 5		
NOT TOOLED	-131-51	13	YES	2 & 5		
22-01-6134	-13-52	13	NO	9 & 12		
22-01-6135	-131-52	13	YES	9 & 12		
NOT TOOLED	-7-3	7	NO	3		
97-00-0739	-71-3	7	YES	3		
97-00-0061	-15-51	15	NO	2 & 8		
NOT TOOLED	-151-51	15	YES	2 & 8		
97-00-0189	-5-4	5	NO	4		
97-00-0620	-51-4	5	YES	4		
97-00-0619	-51-3	5	YES	3		
97-00-0740	E-6471-61-3	6	YES	3	↓	↓

SEE SHEET I FOR DIMENSION

A SEE SHEET I	LTR	REVISIONS	DIMENSIONS SHOWN (METRIC) INCH		DWG BY SF	REVISE ONLY ON CAD SYSTEM		SH.	REV.
			UNLESS OTHERWISE SPECIFIED TOLERANCES: ANGULAR ± 8			CAD/CAM FILENAME SD-6471-N - .104		THIS DRAWING CONTAINS INFORMATION THAT IS PROPRIETARY TO MOLEX INC. & SHOULD NOT BE USED WITHOUT WRITTEN PERMISSION	
			3 PLACE ± .	#		TITLE 2.54 mm KK Crp Trm Hsg il		SHEET NO. DATE 40F 17/07/00	
			2 PLACE ± .	#		MOLEX EUROPE		PART NO. DWG NO. SEE CHART SD-6471-N-***	
			1 PLACE ± .	#	APP'D BY	SCALE			
			DRAFT WHERE APPL (CABLE MUST REMAIN WITHIN DIMENSIONS)						
			DESIGN DIMENSION (PRIMARY)	<input type="checkbox"/> (MM)					
			EQUIVALENT DIMENSION (SECONDARY)	<input type="checkbox"/> (MM)					

7132-1283

PART NO.
SEE CHART
DWG. NO.
SD-6471-N-...

OPTIONAL STYLE VOID (SECTION E-E)

PART No.	ENG No.	No. OF CIRCUITS	VOID CCT LOCATION	RAMP & POL. RIBS	DIM. A	DIM. B
22-01-6021	E-6471-02-02B	2	2	NO	↑	↑
NOT TOOLED	↑ -021-02B	2	↑	YES	↑ FOR DIM	↑ FOR DIM
22-01-6071	-07-02B	7		NO		
NOT TOOLED	-071-02B	7		YES		
22-01-6101	-10-02B	10		NO		
NOT TOOLED	-101-02B	10		YES		
22-01-6111	↓ -11-02B	11	↓	NO	↓	↓
NOT TOOLED	E-6471-111-02B	11	2	YES	↓ SEE SHT. 1 FOR DIM	↓ SEE SHT. 1 FOR DIM

PART No.	ENG No.	No. OF CIRCUITS	RAMP ONLY	DIM. A	DIM. B
97-00-1062	E-6471-2R	2	YES	↑	↑
↑ -1063	↑ -3R	3	↑		
-1064	-4R	4			
-1065	-5R	5			
-1066	-6R	6			
-1067	-7R	7			
-1068	-8R	8			
-1069	-9R	9			
-1070	-10R	10			
-1071	-11R	11			
-1072	-12R	12			
-1073	-13R	13			
-1074	-14R	14			
-1075	-15R	15			
↓ -1076	-16R	16			
97-00-1077	-17R	17			
NOT TOOLED	-18R	18			
↑	-19R	19			
	-20R	20			
	-21R	21			
	-22R	22			
	-23R	23			
	-24R	24			
	-25R	25			
	-26R	26			
	-27R	27			
NOT TOOLED	E-6471-28R	28	YES	↓	↓

SEE SHEET 1 FOR DIMENSION

SEE SHEET 1 FOR DIMENSION

SEE SHEET 1.

DIMENSIONS SHOWN (METRIC) INCH UNLESS OTHERWISE SPECIFIED TOLERANCES: ANGULAR ± 8° 3 PLACE ± . 2 PLACE ± . 1 PLACE ± . DRAFT WHERE APPL (CABLE MUST REMAIN WITHIN DIMENSIONS DESIGN DIMENSION (PRIMARY) <input type="checkbox"/> (MM) <input type="checkbox"/> IN. EQUIVALENT DIMENSION (SECONDARY) <input type="checkbox"/> (MM) <input type="checkbox"/> IN.	DRWG BY SF CHK'D BY APP'D BY SCALE -	REVISE ONLY ON CAD SYSTEM		SH. REV.	
		CAD/CAM FILENAME SD-6471-N - .305		THIS DRAWING CONTAINS INFORMATION THAT IS PROPRIETARY TO MOLEX INC. & SHOULD NOT BE USED WITHOUT WRITTEN PERMISSION	
		TITLE 2.54 mm KK Cpr Trm Hsg II			
		MOLEX EUROPE		SHEET NO. 50F	DATE 17/07/00
PART NO. SEE CHART		DWG NO. SD-6471-N-...		SIZE B	

7132-1283

DWG. NO. SDE-6471-N**

F

E

D

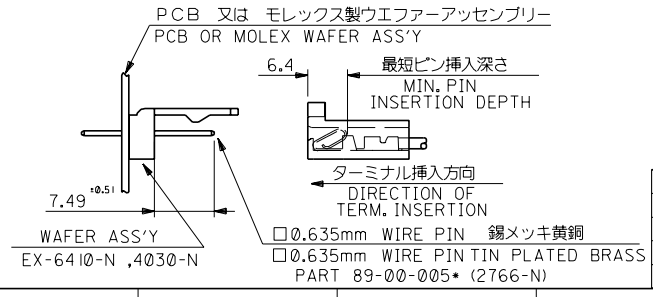
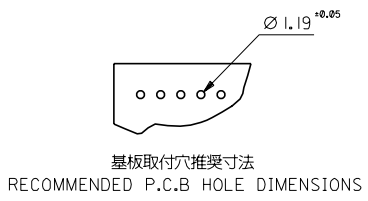
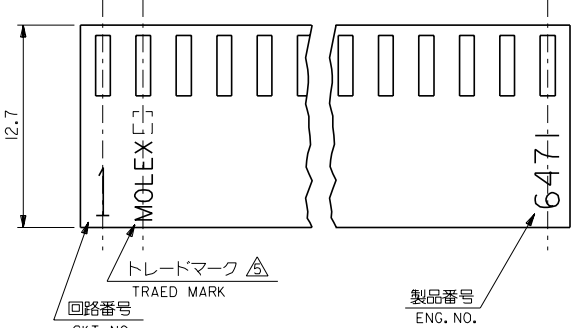
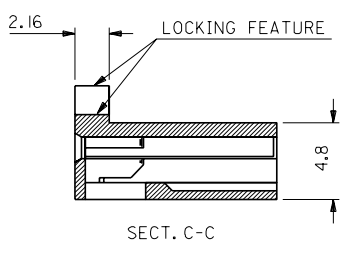
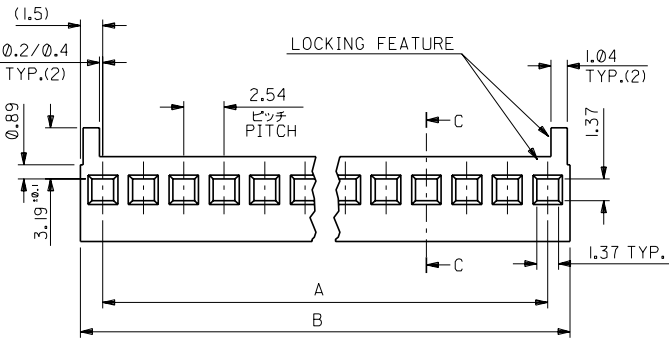
C

B

A

A

V



角度 ANGLE	公差 TOLERANCE
30°以上 OVER	+0.3
10°以上 30° UNDER	+0.25
未過 UNDER	+0.2
一般公差 GENERAL TOLERANCES	

材料 MATERIAL	ナイロン6/6, UL94V-0 NYLON6/6, UL94V-0
仕上げ FINISH	—
適用電線範囲 WIRE RANGE	—
被覆外径 INS. RANGE	—
DRAWN BY	97/09/18 Y.KANNO
CHK'D BY	97/09/19 Y.MIZUNO
APPR'D BY	97/09/19 M.FUKUSHIMA
DATE	

MOLEX	MOLEX-JAPAN CO., LTD. 日本モレックス株式会社
REVISE ONLY ON CAD SYSTEM	
TITLE 名称 HOUSING ,KK (2.54) / .100 CRIMP TYPE ,ANTI FISH-HOOKING TERMINAL WITH LOCKING RAMP	
DWG. NO.	SHEET 1 OF 2
SDE-6471-N**	REV V

68.58 ^{+0.33}	71.58 ^{+0.46}	E-6471-281	28
66.04 ^{+0.33}	69.04 ^{+0.46}	-271	27
63.50 ^{+0.33}	66.50 ^{+0.46}	-261	26
60.96 ^{+0.33}	63.96 ^{+0.43}	-251	25
58.42 ^{+0.31}	61.42 ^{+0.43}	-241	24
55.88 ^{+0.31}	58.88 ^{+0.43}	-231	23
53.34 ^{+0.30}	56.34 ^{+0.41}	-221	22
50.80 ^{+0.30}	53.80 ^{+0.41}	-211	21
48.26 ^{+0.25}	51.26 ^{+0.36}	-201	20
45.72 ^{+0.23}	48.72 ^{+0.33}	-191	19
43.18 ^{+0.23}	46.18 ^{+0.33}	-181	18
40.64 ^{+0.20}	43.64 ^{+0.30}	-171	17
38.10 ^{+0.20}	41.10 ^{+0.30}	-161	16
35.56 ^{+0.20}	38.56 ^{+0.30}	-151	15
33.02 ^{+0.18}	36.42 ^{+0.28}	-141	14
30.48 ^{+0.16}	33.48 ^{+0.28}	-131	13
27.94 ^{+0.16}	30.94 ^{+0.28}	-121	12
25.40 ^{+0.15}	28.40 ^{+0.25}	-111	11
22.86 ^{+0.15}	25.86 ^{+0.25}	-101	10
20.32 ^{+0.13}	23.32 ^{+0.23}	-091	9
17.78 ^{+0.13}	20.78 ^{+0.23}	-081	8
15.24 ^{+0.13}	18.24 ^{+0.23}	-071	7
12.70 ^{+0.10}	15.70 ^{+0.23}	-061	6
10.16 ^{+0.10}	13.16 ^{+0.20}	-051	5
7.62 ^{+0.10}	10.62 ^{+0.20}	-041	4
5.08 ^{+0.10}	8.07 ^{+0.20}	-031	3
2.54 ^{+0.10}	5.53 ^{+0.20}	E-6471-021	2
A	B	ENG. NO.	NO. OF CKTS.

THIS DRAWING CONTAINS INFORMATION THAT IS PROPRIETARY TO MOLEX (JAPAN) AND SHOULD NOT BE USED WITHOUT WRITTEN PERMISSION. 本図面は日本モレックス(株)の所有する情報を含むもので、当社の許可なく複製を禁止する。 EN-01C(032)MXJ-32

DWG. NO. SDE-6471-N*-**
 E
 D
 C
 B
 A
 DIMENSIONS IN METRIC DO NOT SCALE DRAWING

8 7 6 5 4 3 2 1

22-01-2285	E-6471-281	28	○	↑	↑
NOT TOoled	↑ -271	27	↑		
22-01-2265	-261	26			
NOT TOoled	-251	25			
22-01-2245	-241	24			
↑ -2235	-231	23			
-2225	-221	22			
-2215	-211	21			
-2205	-201	20			
-2195	-191	19			
-2185	-181	18			
-2175	-171	17			
-2165	-161	16			
-2155	-151	15			
-2145	-141	14			
-2135	-131	13			
-2125	-121	12			
-2115	-111	11			
-2105	-101	10			
-2095	-091	9			
-2085	-081	8			
-2075	-071	7			
-2065	-061	6			
-2055	-051	5			
-2045	-041	4			
↓ -2035	↓ -031	3	○	↓	↓
22-01-2025	E-6471-021	2	○	↓	↓
PART NO.	ENG. NO.	種数 NO. OF CKTS.	接合部 RAMP & POL. RIBS	A	B

注記
NOTES

- 適合ターミナル 4809-* (22-30 GA)
クランプ部 被覆外径 Φ1.58mm以下
FOR USE TERMINAL 4809-* (22-30 GA)
CRIMP TYPE ,MAX. INSULATION Φ1.58mm
- ハウジングの端と端を合わせて積み重ねることができる。
TWO(2) HOUSINGS MAY BE STACKED END TO END.
- () 内寸法は参考寸法
() DIMENSION IS FOR REFERENCE.
- 本製品は仕様書NO. 10-071に基づく。
THIS PART CONFORMS TO MOLEX PRODUCT SPEC. NO.10-07
- △ トレードマーク：MOLEX プラス1文字の製造国を示すアルファベットにて構成。
(例：I=アイルランド)
TRADE MARK FORMED BY MOLEX AND 1 MORE LETTER OF ALPHABET
WHICH MEAN THE MANUFACTURING COUNTRY. (c.g. I=IRELAND)
- 19から28極は標準品ではありません。
19-28 CIRCUITS ARE NON-STANDARD.
- 一般公差：±0.4
GENERAL TOLERANCES:±0.4

角度 ANGLE		公差 TOL.	材料 MATERIAL	MOLEX-JAPAN CO.,LTD. 日本モレックス株式会社
30以上 OVER	±0.3	ナイロン6/6, UL94V-0 NYLON6/6,UL94V-0	仕上げ FINISH	
10以上 未満 UNDER	±0.25	新規作成	適用電線範囲 WIRE RANGE	REVISE ONLY ON CAD SYSTEM
10未満 UNDER	±0.2	RELEASED (JC80224)	被覆外径 INS. RANGE	TITLE 名称
一般公差 GENERAL TOLERANCES		Y.K. 97/09/18	DRAWN BY 97/09/18	HOUSING ,KK (2,54)/.100
		Y.M. 97/09/19	CHK'D BY 97/09/19	CRIMP TYPE ,ANTI
		DR. 97/09/19	APP'D BY 97/09/19	FISH-HOOKING TERMINAL
		CHK. DATE	M.FUKUSHIMA	WITH LOCKING RAMP
			尺 寸 尺 度	DWG. NO. SHEET 2 OF 2
			SCALE	SDE-6471-N*-**
				REV V

THIS DRAWING CONTAINS INFORMATION THAT IS PROPRIETARY TO MOLEX/JAPAN AND SHOULD NOT BE USED WITHOUT WRITTEN PERMISSION
 本図面は日本モレックス(株)の所有する情報を含むもので 当社の許可なく複製を禁止する。 EN-01C(032)MXJ-32

8 7 6 5 4 3 2 1