

PLEASE CHECK WWW.MOLEX.COM FOR LATEST PART INFORMATION

Part Number: [0022012046](#)
Status: **Active**
Overview: [kk](#)
Description: 2.54mm (.100") Pitch KK@ Crimp Terminal Housing, 4 Circuits, Use with 4809

Documents:

3D Model	Product Specification PS-99020-0088 (PDF)
Drawing (PDF)	RoHS Certificate of Compliance (PDF)
Product Specification PS-10-07 (PDF)	

Agency Certification

CSA	LR19880
UL	E29179

General

Product Family	Crimp Housings
Series	6471
Overview	kk
Product Name	KK@

Physical

Circuits (maximum)	4
Color - Resin	Natural (White)
Flammability	94V-0
Gender	Female
Glow-Wire Compliant	No
Lock to Mating Part	None
Material - Resin	Nylon
Number of Rows	1
Packaging Type	Bag
Panel Mount	No
Pitch - Mating Interface (in)	0.100 In
Pitch - Mating Interface (mm)	2.54 mm
Stackable	No
Temperature Range - Operating	0°C to +75°C

Solder Process Data

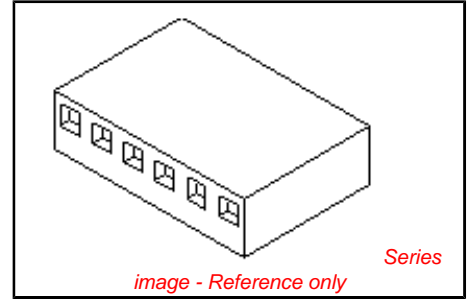
Lead-free Process Capability	Wave Capable (TH only)
------------------------------	------------------------

Material Info

Old Part Number	6471-04
-----------------	---------

Reference - Drawing Numbers

Product Specification	PS-10-07, PS-99020-0088
Sales Drawing	SD-6471-N*-**



EU RoHS
ELV and RoHS
Compliant
REACH SVHC
 Not Reviewed
Halogen-Free
Status
Halogen-Free

China RoHS



Need more information on product environmental compliance?

Email productcompliance@molex.com
 For a multiple part number RoHS Certificate of Compliance, [click here](#)

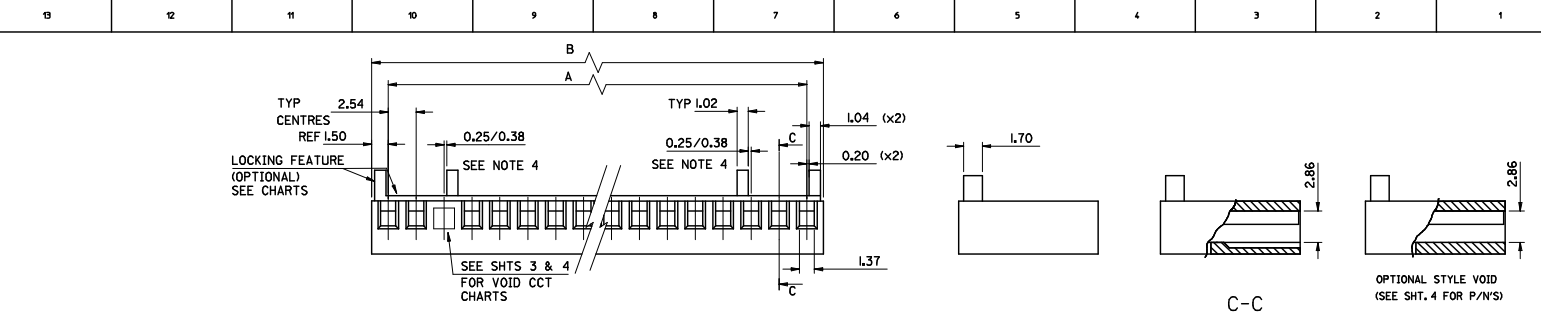
Please visit the [Contact Us](#) section for any non-product compliance questions.

Search Parts in this Series
[6471Series](#)

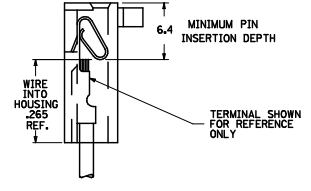
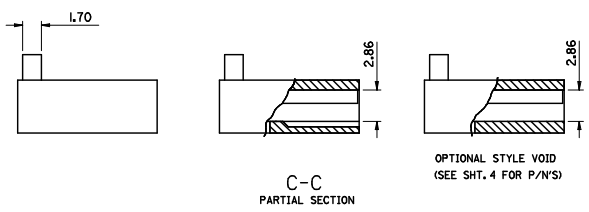
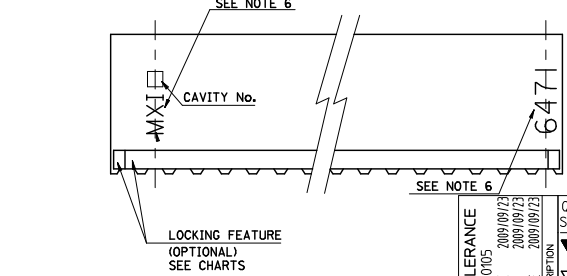
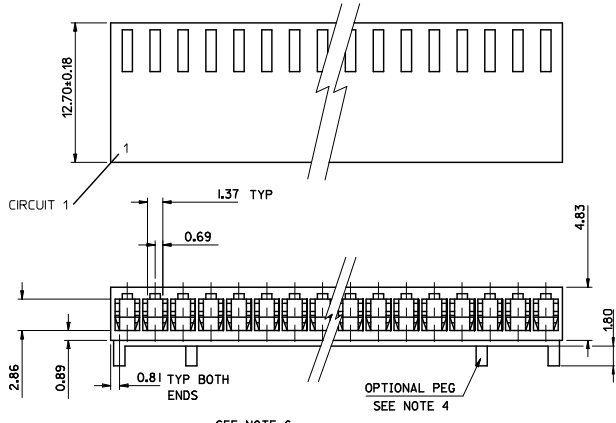
Mates With
 2.54mm (.100") Pitch KK @ PCB Headers

Use With
 4809 KK@ Crimp Terminal

PLEASE CHECK WWW.MOLEX.COM FOR LATEST PART INFORMATION



28	68.58±0.35	71.58±0.35
27	66.04±0.35	69.04±0.35
26	63.50±0.35	66.50±0.35
25	60.96±0.35	63.96±0.35
24	58.42±0.35	61.42±0.35
23	55.88±0.35	58.88±0.35
22	53.34±0.35	56.34±0.35
21	50.80±0.35	53.80±0.35
20	48.26±0.35	51.26±0.35
19	45.72±0.35	48.72±0.35
18	43.18±0.35	46.18±0.35
17	40.64±0.35	43.64±0.35
16	38.10±0.35	41.10±0.35
15	35.56±0.35	38.56±0.35
14	33.02±0.35	36.02±0.35
13	30.48±0.35	33.48±0.35
12	27.94±0.35	30.94±0.35
11	25.40±0.35	28.40±0.35
10	22.86±0.35	25.86±0.35
9	20.32±0.35	23.32±0.35
8	17.78±0.35	20.78±0.35
7	15.24±0.35	18.24±0.35
6	12.70±0.15	15.70±0.15
5	10.16±0.15	13.16±0.15
4	7.62±0.15	10.62±0.15
3	5.08±0.15	8.08±0.15
2	2.54±0.15	5.54±0.15
No. OF CCTS	DIM A	DIM B



- NOTES:
- MATERIAL: POLYAMIDE (PA66/6), UL94 V-0
COLOR: NATURAL PER THE FOLLOWING 89992-0086
 - FOR USE WITH ANTI-FISH HOOKING TERMINAL No. 4809-*
 - SEE SHT. 3 FOR PARTS WITH VOIDS.
 - OPTIONAL CENTRE PEGS TO BE USED ON Tact & LARGER SIZES ONLY. SEE SHT. 3 FOR CHARTED ENG. No.'S.
 - PART No. PRECEDED BY CODE LETTER DESIGNATES MFG. LOC'N. I=IRELAND
- E-6471-N-***
- No. OF CCTS
- BLANK = STD. VOID
B = OPT. STYLE VOID
VOID CCT LOC'N.
- BLANK NO LOCKING RAMP
HOUSING STYLE
I = LOCKING RAMP & POL. RIB
S = OPT. PEG
R = LOCKING RAMP ONLY
6. 'MX*' MARK AND PART I.D. '6471' APPEAR EITHER ON FRONT OR BACK SIDE. SEE END VIEW FOR SIDE ORIENTATION.

ADJUST TOLERANCE EC NO: E2010-0105 DRAWN: BMAGUIRE 2009/09/23 CHKD: 2009/09/23 APPR: BMAGUIRE 2009/09/23 REV	QUALITY SYMBOLS	GENERAL TOLERANCES (UNLESS SPECIFIED)	DIMENSION STYLE MM ONLY	SCALE 1:1	DESIGN UNITS METRIC	THIRD ANGLE PROJECTION
	▽=0	4 PLACES ± --- ± --- SF	DRAWN BY DATE 2000/07/14	TITLE 2.54 MM KK CRP TRM HSG IL		
	▽=0	3 PLACES ± --- ± ---	CHECKED BY DATE JWASZKIEWICZ 2006/02/27	MOLEX INCORPORATED		
		2 PLACES ± 0.15 ± --- 1 PLACE ± 0.25 ± --- ANGULAR ± --- °	APPROVED BY DATE JDENNEHY 2006/02/27	MATERIAL NO. DOCUMENT NO. SD-6471-N-***	SHEET NO. 1 OF 5	
DRAFT WHERE APPLICABLE MUST REMAIN WITHIN DIMENSIONS		SEE CHART		THIS DRAWING CONTAINS INFORMATION THAT IS PROPRIETARY TO MOLEX INCORPORATED AND SHOULD NOT BE USED WITHOUT WRITTEN PERMISSION		

PART NO. SEE CHART
 Dwg. No. SD-647I-N-***

PART No.	ENG No.	No. OF CIRCUITS	RAMP & POL. RIBS	DIM. A	DIM. B
22-01-2025	E-6471-021	2	YES	↑	↑
↑ -2035	↑ -031	3	↑		
-2045	-041	4			
-2055	-051	5			
-2065	-061	6			
-2075	-071	7			
-2085	-081	8			
-2095	-091	9			
-2105	-101	10			
-2115	-111	11			
-2125	-121	12			
-2135	-131	13			
-2145	-141	14			
-2155	-151	15			
-2165	-161	16			
-2175	-171	17			
-2185	-181	18			
-2195	-191	19			
-2205	-201	20			
-2215	-211	21			
-2225	-221	22			
↓ -2235	↓ -231	23			
22-01-2245	-241	24			
NOT TOOLED	-251	25			
22-01-2265	-261	26			
NOT TOOLED	↓ -271	27			
22-01-2285	E-6471-281	28	YES	↓	↓

PART No.	ENG No.	No. OF CIRCUITS	LOCKING FEATURE	DIM. A	DIM. B
22-01-2026	E-6471-2	2	NO	↑	↑
↑ -2036	↑ -3	3	↑		
-2046	-4	4			
-2056	-5	5			
-2066	-6	6			
-2076	-7	7			
-2086	-8	8			
-2096	-9	9			
-2106	-10	10			
-2116	-11	11			
-2126	-12	12			
-2136	-13	13			
-2146	-14	14			
-2156	-15	15			
-2166	-16	16			
-2176	-17	17			
-2186	-18	18			
-2196	-19	19			
-2206	-20	20			
↓ -2216	↓ -21	21			
22-01-2226	-22	22			
NOT TOOLED	-23	23			
22-01-2246	-24	24			
NOT TOOLED	-25	25			
22-01-2266	-26	26			
22-01-2276	↓ -27	27			
22-01-2286	E-6471-28	28	NO	↓	↓

A SEE SHEET I.
 LTR REVISIONS

DIMENSIONS SHOWN (METRIC) INCH
 UNLESS OTHERWISE SPECIFIED TOLERANCES: ANGULAR ± 0.5°
 3 PLACE ± .010 (INCH) ± .001 (METRIC)
 2 PLACE ± .005 " ± .001 #
 1 PLACE ± .020 " ± .005 #
 DRAFT WHERE APPL (CABLE MUST REMAIN WITHIN DIMENSIONS)
 DESIGN DIMENSION (PRIMARY) (MM) IN.
 EQUIVALENT DIMENSION (SECONDARY) (MM) IN.

DRWG BY: SF
 CHK'D BY:
 APP'D BY:
 SCALE: -

REVISE ONLY ON CAD SYSTEM		SH.	REV.
CAD/CAM FILENAME: SD-647I-N-*.SD2		THIS DRAWING CONTAINS INFORMATION THAT IS PROPRIETARY TO MOLEX INC. & SHOULD NOT BE USED WITHOUT WRITTEN PERMISSION	
TITLE: 2.54 mm KK Crp Trm Hsg II			
MOLEX EUROPE		SHEET NO. 20F	DATE 15/07/00
PART NO. SEE CHART	DWG NO. SD-647I-N-***	SIZE B	

7132-1283

	10	9	8	7	6	5	4	3	2	1
F E D C B A	PART NO. SEE CHART DWG. NO. SD-647I-N-***	PART No.	ENG No.	No. OF CIRCUITS	RAMP & POL. RIBS	VOID CCT LOCATION	DIM. A	DIM. B		
		22-01-4022	E-647I-021-02	2	YES	2	↑	↑		
		↑ -4032	↑ -031-02	3	↑	↑				
		-4042	-041-02	4						
		-4052	-051-02	5						
		-4062	-061-02	6						
		-4072	-071-02	7						
		-4082	-081-02	8						
		-4092	-091-02	9						
		-4102	-101-02	10						
		-4112	-111-02	11						
		-4122	-121-02	12						
		-4132	-131-02	13						
		-4142	-141-02	14						
		-4152	-151-02	15						
		-4162	-161-02	16						
		-4172	-171-02	17						
		-4182	-181-02	18						
		-4192	-191-02	19						
		-4202	-201-02	20						
		-4212	-211-02	21						
		-4222	-221-02	22						
		-4232	-231-02	23						
		-4242	-241-02	24						
		-4252	-251-02	25						
		-4262	-261-02	26						
		↓ -4272	↓ -271-02	27						
		22-01-4282	E-647I-281-02	28	YES	2	↓	↓		

	10	9	8	7	6	5	4	3	2	1						
F E D C B A	PART NO.	ENG No.	No. OF CIRCUITS	LOCKING FEATURE	VOID CCT LOCATION	DIM. A	DIM. B									
								22-01-4021	E-647I-02-02	2	NO	2	↑	↑		
								↑ -4031	↑ -03-02	3	↑	↑				
								-4041	-04-02	4						
								-4051	-05-02	5						
								-4061	-06-02	6						
								-4071	-07-02	7						
								-4081	-08-02	8						
								-4091	-09-02	9						
								-4101	-10-02	10						
								-4111	-11-02	11						
								-4121	-12-02	12						
								-4131	-13-02	13						
								-4141	-14-02	14						
								-4151	-15-02	15						
								-4161	-16-02	16						
								-4171	-17-02	17						
								-4181	-18-02	18						
								-4191	-19-02	19						
								-4201	-20-02	20						
								-4211	-21-02	21						
								-4221	-22-02	22						
								-4231	-23-02	23						
								-4241	-24-02	24						
								-4251	-25-02	25						
								-4261	-26-02	26						
								↓ -4271	↓ -27-02	27						
								22-01-4281	E-647I-28-02	28	NO	2	↓	↓		

SEE SHEET I.	REVISIONS	DIMENSIONS SHOWN (METRIC) INCH	DRWG BY	REVISE ONLY ON CAD SYSTEM		SHL	REV.
		UNLESS OTHERWISE SPECIFIED TOLERANCES: ANGULAR ± 0.5°	SF	THIS DRAWING CONTAINS INFORMATION THAT IS PROPRIETARY TO MOLEX INC. & SHOULD NOT BE USED WITHOUT WRITTEN PERMISSION			
		3 PLACE ± . 2 PLACE ± . 1 PLACE ± .	CHK'D BY	TITLE			
		DRAFT WHERE APPLICABLE MUST REMAIN WITHIN DIMENSIONS	APP'D BY	2.54 mm KK Crp Trm Hsg II			
		DESIGN DIMENSION (PRIMARY) <input type="checkbox"/> (MM) <input type="checkbox"/> IN.	SCALE	MOLEX EUROPE SHEET NO. DATE			
		EQUIVALENT DIMENSION (SECONDARY) <input type="checkbox"/> (MM) <input type="checkbox"/> IN.	-	30F 13/07/00			
				PART NO.		DWG NO.	SIZE
				SEE CHART		SD-647I-N-***	B

PART NO. SEE CHART
 DWG. NO. SD-6471-N-***

HOUSING WITH OPTIONAL PEGS

PART No.	ENG No.	No. OF CIRCUITS	RAMP & POL. RIBS	DIM. A	DIM. B
NOT TOOLED	E-6471-7S	7	YES	↑	↑
↑	↑	↑	↑	↑	↑
	-8S	8			
	-9S	9			
	-10S	10			
	-11S	11			
	-12S	12			
	-13S	13			
	-14S	14			
	-15S	15			
	-16S	16			
	-17S	17			
	-18S	18			
	-19S	19			
	-20S	20			
	-21S	21			
	-22S	22			
	-23S	23			
	-24S	24			
	-25S	25			
	-26S	26			
	-27S	27			
NOT TOOLED	E-6471-28S	28	YES	↓	↓

SEE SHEET I FOR DIMENSION
 SEE SHEET I FOR DIMENSION

PART No.	ENG No.	No. OF CIRCUITS	RAMP & POL. RIBS	VOID CCT LOCATION	DIM. A	DIM. B
22-01-4123	E-6471-12-11	12	NO	11	↑	↑
22-01-4124	-121-11	12	YES	11	↑	↑
NOT TOOLED	-24-01	24	NO	1		
NOT TOOLED	-241-01	24	YES	1		
22-01-6132	-13-51	13	NO	2 & 5		
NOT TOOLED	-131-51	13	YES	2 & 5		
22-01-6134	-13-52	13	NO	9 & 12		
22-01-6135	-131-52	13	YES	9 & 12		
NOT TOOLED	-7-3	7	NO	3		
97-00-0739	-71-3	7	YES	3		
97-00-0061	-15-51	15	NO	2 & 8		
NOT TOOLED	-151-51	15	YES	2 & 8		
97-00-0189	-5-4	5	NO	4		
97-00-0620	-51-4	5	YES	4		
97-00-0619	-51-3	5	YES	3		
97-00-0740	E-6471-61-3	6	YES	3	↓	↓

SEE SHEET I FOR DIMENSION
 SEE SHEET I FOR DIMENSION

A SEE SHEET I	LTR REVISIONS	DIMENSIONS SHOWN (METRIC) INCH	DRWG BY	REVISE ONLY ON CAD SYSTEM		SH. REV.
		UNLESS OTHERWISE SPECIFIED TOLERANCES: ANGULAR ± 8	SF	CAD/CAM FILENAME: SD-6471-N - .I504		
		3 PLACE ± .	CHK'D BY	THIS DRAWING CONTAINS INFORMATION THAT IS PROPRIETARY TO MOLEX INC. & SHOULD NOT BE USED WITHOUT WRITTEN PERMISSION		
		2 PLACE ± .	APP'D BY	TITLE: 2.54 mm KK Crp Trm Hsg il		
		1 PLACE ± .	SCALE	MOLEX EUROPE		SHEET NO. DATE
		DRAFT WHERE APPL (CABLE MUST REMAIN WITHIN DIMENSIONS)				40F 17/07/00
		DESIGN DIMENSION (PRIMARY) □ (MM) □ IN.		PART NO. SEE CHART		DWG NO. SD-6471-N-***
		EQUIVALENT DIMENSION (SECONDARY) □ (MM) □ IN.				SIZE B

7132-1283

PART NO. SEE CHART
 DWG. NO. SD-6471-N-***

OPTIONAL STYLE VOID (SECTION E-E)

PART No.	ENG No.	No. OF CIRCUITS	VOID CCT LOCATION	RAMP & POL. RIBS	DIM. A	DIM. B
22-01-6021	E-6471-02-02B	2	2	NO	↑	↑
NOT TOOLED	↑ -021-02B	2	↑	YES	↑ FOR DIM	↑ FOR DIM
22-01-6071	-07-02B	7		NO		
NOT TOOLED	-071-02B	7		YES		
22-01-6101	-10-02B	10		NO		
NOT TOOLED	-101-02B	10		YES		
22-01-6111	↓ -11-02B	11	↓	NO	↓ SEE SHT. 1 FOR DIM	↓ SEE SHT. 1 FOR DIM
NOT TOOLED	E-6471-111-02B	11	2	YES	↓	↓

PART No.	ENG No.	No. OF CIRCUITS	RAMP ONLY	DIM. A	DIM. B
97-00-1062	E-6471-2R	2	YES	↑	↑
↑ -1063	↑ -3R	3	↑		
-1064	-4R	4			
-1065	-5R	5			
-1066	-6R	6			
-1067	-7R	7			
-1068	-8R	8			
-1069	-9R	9			
-1070	-10R	10			
-1071	-11R	11			
-1072	-12R	12			
-1073	-13R	13			
-1074	-14R	14			
-1075	-15R	15			
↓ -1076	-16R	16			
97-00-1077	-17R	17			
NOT TOOLED	-18R	18			
↑	-19R	19			
	-20R	20			
	-21R	21			
	-22R	22			
	-23R	23			
	-24R	24			
	-25R	25			
	-26R	26			
	-27R	27			
NOT TOOLED	E-6471-28R	28	YES	↓	↓

SEE SHEET 1 FOR DIMENSION
 SEE SHEET 1 FOR DIMENSION

SEE SHEET 1.

DIMENSIONS SHOWN (METRIC) INCH UNLESS OTHERWISE SPECIFIED TOLERANCES: ANGULAR ± 8° 3 PLACE ± . 2 PLACE ± . 1 PLACE ± . DRAFT WHERE APPLICABLE MUST REMAIN WITHIN DIMENSIONS DESIGN DIMENSION (PRIMARY) <input type="checkbox"/> (MM) <input type="checkbox"/> IN. EQUIVALENT DIMENSION (SECONDARY) <input type="checkbox"/> (MM) <input type="checkbox"/> IN.	DRWG BY SF CHKD BY APPD BY SCALE -	REVISE ONLY ON CAD SYSTEM SH. REV.	
		CAD/CAM FILENAME SD-6471-N - .305 THIS DRAWING CONTAINS INFORMATION THAT IS PROPRIETARY TO MOLEX INC. & SHOULD NOT BE USED WITHOUT WRITTEN PERMISSION	
		TITLE 2.54 mm KK Cpr Trm Hsg II	
		MOLEX EUROPE PART NO. SEE CHART	SHEET NO. DATE 50F 17/07/00 SIZE B

7132-1283