

**PLEASE CHECK WWW.MOLEX.COM FOR LATEST PART INFORMATION**

**Part Number:** [0010013066](#)  
**Status:** **Active**  
**Overview:** [spox](#)  
**Description:** 5.08mm (.200") Pitch SPOX™ Crimp Terminal Housing, 6 Circuits

**Documents:**

<a href="#">3D Model</a>	<a href="#">Product Specification PS-5197-005 (PDF)</a>
<a href="#">Drawing (PDF)</a>	<a href="#">RoHS Certificate of Compliance (PDF)</a>
<a href="#">Product Specification PS-5197-001 (PDF)</a>	

**Agency Certification**

CSA	LR19980
TUV	R72090224
UL	E29179

**General**

Product Family	Crimp Housings
Series	<a href="#">5197</a>
Overview	<a href="#">spox</a>
Product Name	SPOX™

**Physical**

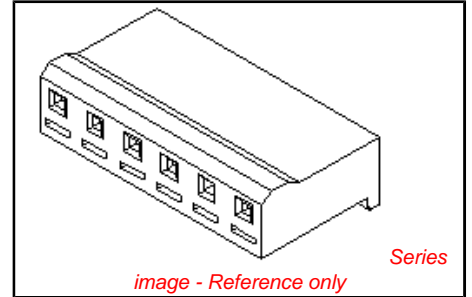
Circuits (maximum)	6
Color - Resin	Natural
Flammability	94V-2
Gender	Female
Glow-Wire Compliant	No
Material - Resin	Nylon
Number of Rows	1
Packaging Type	Bag
Panel Mount	No
Pitch - Mating Interface (in)	0.200 In
Pitch - Mating Interface (mm)	5.08 mm
Stackable	No
Temperature Range - Operating	-40°C to +105°C

**Material Info**

Old Part Number	5197-06
-----------------	---------

**Reference - Drawing Numbers**

Packaging Specification	<a href="#">SPK-5197-001</a>
Product Specification	<a href="#">PS-5197-001</a> , <a href="#">PS-5197-005</a> , <a href="#">RPS-5281-001</a>
Sales Drawing	<a href="#">SD-5197-N</a>



<p><b>EU RoHS</b>  <b>ELV and RoHS</b>  <b>Compliant</b>  <b>REACH SVHC</b>  <b>Contains SVHC: No</b>  <b>Halogen-Free</b>  <b>Status</b>  <b>Not Reviewed</b></p>	<p><b>China RoHS</b></p>
--	--------------------------

**Need more information on product environmental compliance?**

Email [productcompliance@molex.com](mailto:productcompliance@molex.com)  
 For a multiple part number RoHS Certificate of Compliance, [click here](#)

Please visit the [Contact Us](#) section for any non-product compliance questions.

**Search Parts in this Series**  
[5197Series](#)

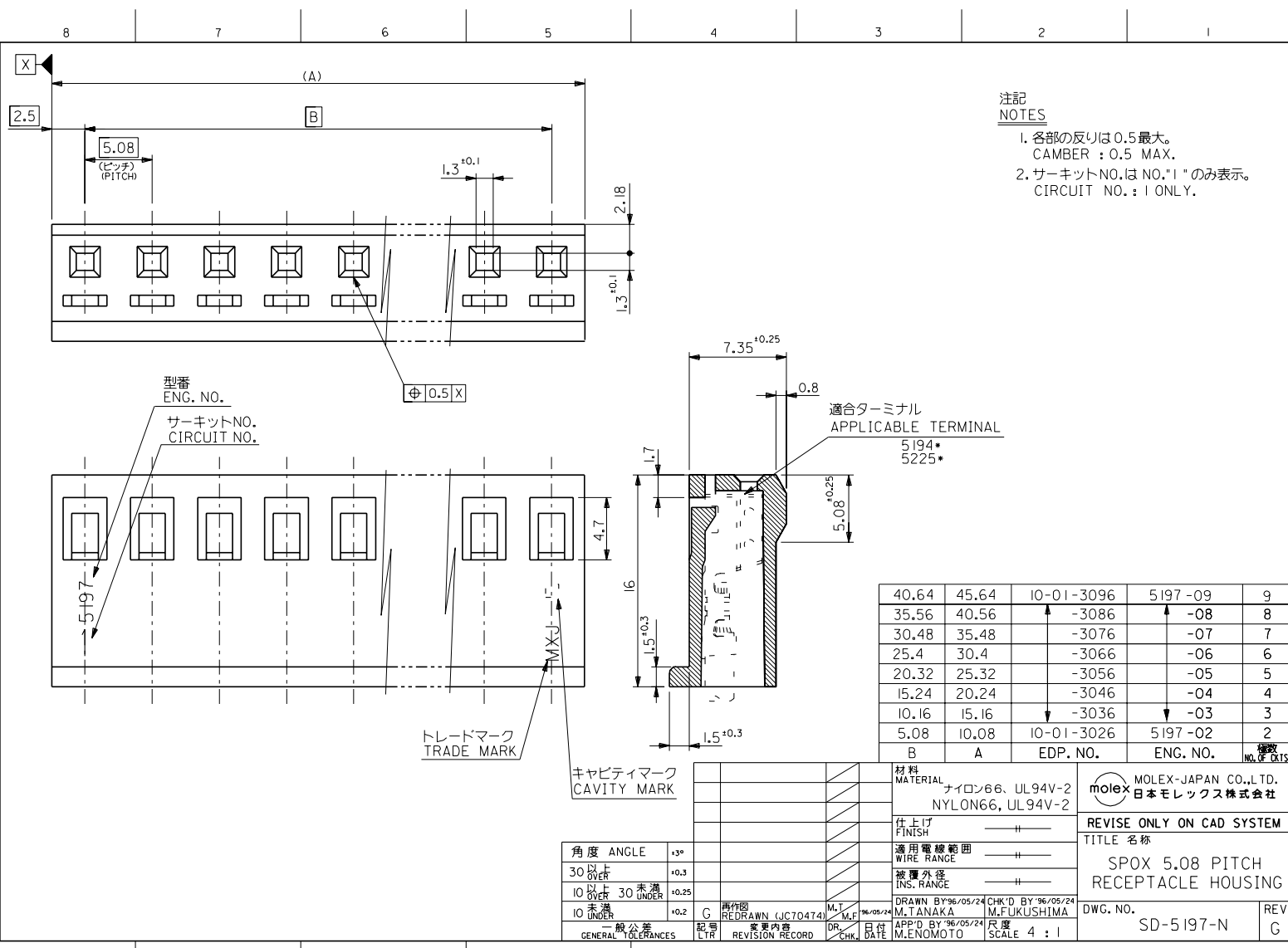
**Mates With**  
[5279](#) , [5280](#) , [5281](#) , [5282](#)

**Use With**  
[5194](#) , [5225](#)

**PLEASE CHECK WWW.MOLEX.COM FOR LATEST PART INFORMATION**

DWG. NO. SD-5197-N

ALL DIMENSIONS IN METRIC DO NOT SCALE DRAWING



注記  
NOTES  
1. 各部の反りは0.5最大。  
CAMBER : 0.5 MAX.  
2. サークットNO.はNO."1"のみ表示。  
CIRCUIT NO. : 1 ONLY.

40.64	45.64	10-01-3096	5197-09	9
35.56	40.56	-3086	-08	8
30.48	35.48	-3076	-07	7
25.4	30.4	-3066	-06	6
20.32	25.32	-3056	-05	5
15.24	20.24	-3046	-04	4
10.16	15.16	-3036	-03	3
5.08	10.08	10-01-3026	5197-02	2
B	A	EDP. NO.	ENG. NO.	検数 NO. OF CKTS.

角度 ANGLE	+3°			
30以上 OVER	+0.3			
10以上 OVER	未過 UNDER	+0.25		
未過 UNDER		+0.2		
一般公差 GENERAL TOLERANCES				

材料 MATERIAL	ナイロン66, UL94V-2 NYLON66, UL94V-2
仕上げ FINISH	—
適用電線範囲 WIRE RANGE	—
被覆外径 INS. RANGE	—
DRAWN BY	96/05/24 M.TANAKA
CHK'D BY	96/05/24 M.FUKUSHIMA
APP'D BY	96/05/24 M.ENOMOTO
尺度	SCALE 4 : 1

MOLEX-JAPAN CO.,LTD. 日本モレックス株式会社	
REVISE ONLY ON CAD SYSTEM	
TITLE 名称 SPOX 5.08 PITCH RECEPTACLE HOUSING	
DWG. NO.	REV
SD-5197-N	G

THIS DRAWING CONTAINS INFORMATION THAT IS PROPRIETARY TO MOLEX/JAPAN AND SHOULD NOT BE USED WITHOUT WRITTEN PERMISSION  
本図面は日本モレックス(株)の所有する情報を含むもので 当社の許可なく複製を禁止する。  
4 3 2 1 EN-01C1032)MXJ-32