

**PLEASE CHECK WWW.MOLEX.COM FOR LATEST PART INFORMATION**

**Part Number:** [0010011094](#)  
**Status:** **Active**  
**Overview:** [kk](#)  
**Description:** 5.08mm (.200") Pitch KK@ Crimp Terminal Housing, 9 Circuits

**Documents:**

[3D Model](#) [Product Specification PS-99020-0087 \(PDF\)](#)  
[Drawing \(PDF\)](#) [RoHS Certificate of Compliance \(PDF\)](#)

**Agency Certification**

CSA LR19980  
 UL E29179

**General**

Product Family Crimp Housings  
 Series [3001](#)  
 Overview [kk](#)  
 Product Name [KK@](#)

**Physical**

Circuits (maximum) 9  
 Color - Resin Natural  
 Flammability 94V-2  
 Gender Female  
 Glow-Wire Compliant No  
 Material - Resin Nylon  
 Number of Rows 1  
 Packaging Type Bag  
 Panel Mount No  
 Pitch - Mating Interface (in) 0.200 In  
 Pitch - Mating Interface (mm) 5.08 mm  
 Temperature Range - Operating -40°C to +105°C

**Solder Process Data**

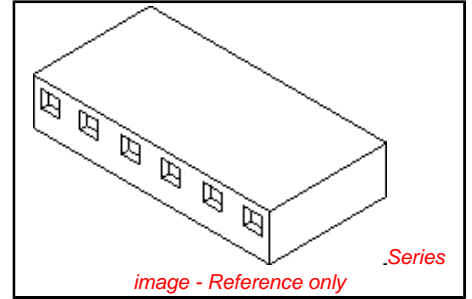
Lead-free Process Capability Wave Capable (TH only)

**Material Info**

Old Part Number 3001-09

**Reference - Drawing Numbers**

Product Specification PS-99020-0087  
 Sales Drawing SDE-3001-N-\*



**EU RoHS**

**ELV and RoHS Compliant**  
**REACH SVHC**  
 Not Reviewed  
**Halogen-Free Status**  
**Halogen-Free**

**China RoHS**



**Need more information on product environmental compliance?**

Email [productcompliance@molex.com](mailto:productcompliance@molex.com)  
 For a multiple part number RoHS Certificate of Compliance, [click here](#)

Please visit the [Contact Us](#) section for any non-product compliance questions.

**Search Parts in this Series**

[3001Series](#)

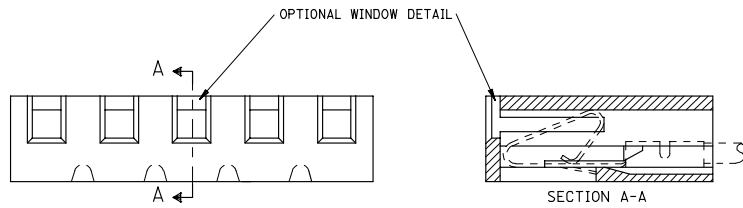
**Mates With**

[3061](#) , [3003](#) , [3008](#)

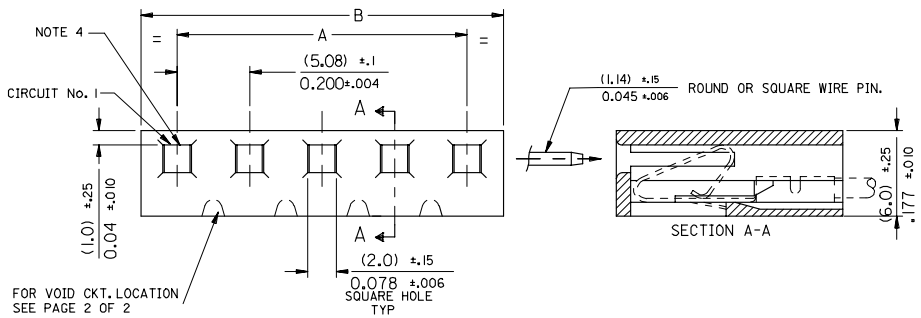
**Use With**

[2478](#) Crimp Terminals for 18-24 AWG, [2578](#) Crimp Terminals for 22-26 AWG, [2878](#)

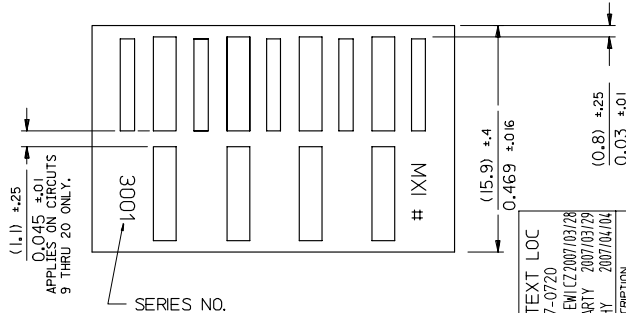
**PLEASE CHECK WWW.MOLEX.COM FOR LATEST PART INFORMATION**



NOTE :  
 1. DIMENSIONS SHOWN IN MILLIMETERS  
 2. FOR OTHER PRODUCT SPEC'S, SEE PSX 10-39.  
 3. THIS HOUSING USES KK TERM. No's. 2478, 2578 & 28



FOR VOID CKT. LOCATION  
SEE PAGE 2 OF 2



10-01-1204	E-3001-20	3,800 ±.012	4,000 ±.012	96.52 ±.3	101.60 ±.3
-1194	-19	3,600 ±.012	3,800 ±.012	91.44 ±.3	96.52 ±.3
-1184	-18	3,400 ±.012	3,600 ±.012	86.36 ±.3	91.44 ±.3
-1174	-17	3,200 ±.012	3,400 ±.012	81.28 ±.3	86.36 ±.3
-1164	-16	3,000 ±.010	3,200 ±.010	76.20 ±.25	81.28 ±.3
-1154	-15	2,800 ±.010	3,000 ±.010	71.12 ±.25	76.20 ±.3
-1144	-14	2,600 ±.010	2,800 ±.010	66.04 ±.25	71.12 ±.3
-1134	-13	2,400 ±.010	2,600 ±.010	60.96 ±.25	66.04 ±.3
-1124	-12	2,200 ±.010	2,400 ±.010	55.88 ±.25	60.96 ±.3
-1114	-11	2,000 ±.008	2,200 ±.010	50.80 ±.20	55.88 ±.3
-1104	-10	1,800 ±.008	2,000 ±.010	45.72 ±.20	50.80 ±.3
-1094	-9	1,600 ±.008	1,800 ±.010	40.64 ±.20	45.72 ±.3
-1084	-8	1,400 ±.008	1,600 ±.010	35.56 ±.20	40.64 ±.3
-1074	-7	1,200 ±.008	1,400 ±.010	30.48 ±.20	35.56 ±.3
-1064	-6	1,000 ±.004	1,200 ±.010	25.40 ±.10	30.48 ±.3
-1054	-5	.800 ±.004	1,000 ±.010	20.32 ±.10	25.40 ±.3
-1044	-4	.600 ±.004	.800 ±.010	15.24 ±.10	20.32 ±.3
-1034	-3	.400 ±.004	.600 ±.010	10.16 ±.10	15.24 ±.3
-1024	-2	.200 ±.004	.400 ±.010	5.08 ±.10	10.16 ±.3
10-01-1014	E-3001-1	.200 ±.004	.400 ±.010	5.08 ±.10	10.16 ±.3
		A	B	A	B
PART No.	ENG. No.	ENGLISH		METRIC	

CENTER RIB ONLY

CORRECT TEXT LOC  
 EC NO: E2007-0720  
 DRWING: MZK/LEM/CZ/2007/03/28  
 CHKD: MRL/ARTY 2007/03/29  
 APPR: JDE/NERHY 2007/04/04

QUALITY SYMBOLS  
 ▽=0  
 ▽=0

DESCRIPTION

GENERAL TOLERANCES (UNLESS SPECIFIED)

	mm	INCH
4 PLACES	±.005	±.0002
3 PLACES	±.008	±.0003
2 PLACES	±.015	±.0006
1 PLACE	±.030	±.0012
ANGULAR ±1/2°		

DRAFT WHERE APPLICABLE  
MUST REMAIN WITHIN DIMENSIONS

DIMENSION STYLE  
MM/IN

DRAWN BY P. MOORE  
DATE 1998/09/15

CHECKED BY MGOONEY  
DATE 1999/03/12

APPROVED BY MWILHITE  
DATE 1999/03/12

MATERIAL NO.

SIZE A3

SCALE 7:1

DESIGN UNITS METRIC

THIRD ANGLE PROJECTION

TITLE 5.08MM KK CRP TERM HSG

MOLEX INCORPORATED

DOCUMENT NO. SDE-3001-N-\*

SHEET NO. 1 OF 1

THIS DRAWING CONTAINS INFORMATION THAT IS PROPRIETARY TO MOLEX INCORPORATED AND SHOULD NOT BE USED WITHOUT WRITTEN PERMISSION

