

PLEASE CHECK WWW.MOLEX.COM FOR LATEST PART INFORMATION

Part Number: [0010011074](#)
Status: **Active**
Overview: [kk](#)
Description: 5.08mm (.200") Pitch KK@ Crimp Terminal Housing, 7 Circuits

Documents:

[3D Model](#) [Product Specification PS-99020-0087 \(PDF\)](#)
[Drawing \(PDF\)](#) [RoHS Certificate of Compliance \(PDF\)](#)

Agency Certification

CSA LR19980
 UL E29179

General

Product Family Crimp Housings
 Series [3001](#)
 Overview [kk](#)
 Product Name KK@

Physical

Circuits (maximum) 7
 Color - Resin Natural
 Flammability 94V-2
 Gender Female
 Glow-Wire Compliant No
 Material - Resin Nylon
 Number of Rows 1
 Packaging Type Bag
 Panel Mount No
 Pitch - Mating Interface (in) 0.200 In
 Pitch - Mating Interface (mm) 5.08 mm
 Temperature Range - Operating -40°C to +105°C

Solder Process Data

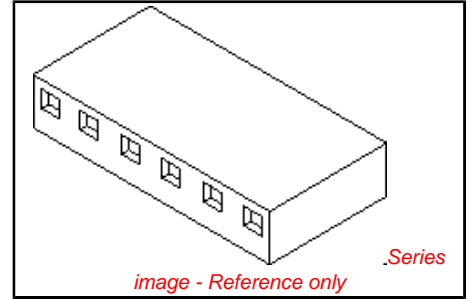
Lead-free Process Capability Wave Capable (TH only)

Material Info

Old Part Number 3001-07

Reference - Drawing Numbers

Product Specification PS-99020-0087
 Sales Drawing SDE-3001-N-*



EU RoHS

ELV and RoHS Compliant

REACH SVHC

Not Reviewed

Halogen-Free

Status

Halogen-Free

Need more information on product environmental compliance?

Email productcompliance@molex.com
 For a multiple part number RoHS Certificate of Compliance, [click here](#)

Please visit the [Contact Us](#) section for any non-product compliance questions.

China RoHS



Search Parts in this Series

[3001Series](#)

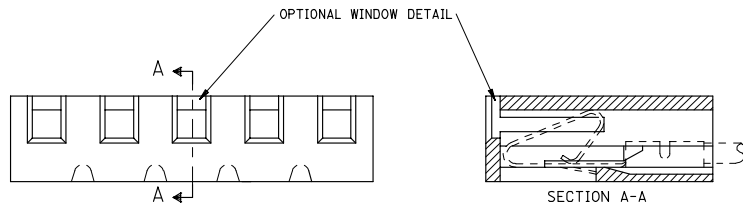
Mates With

[3061](#) , [3003](#) , [3008](#)

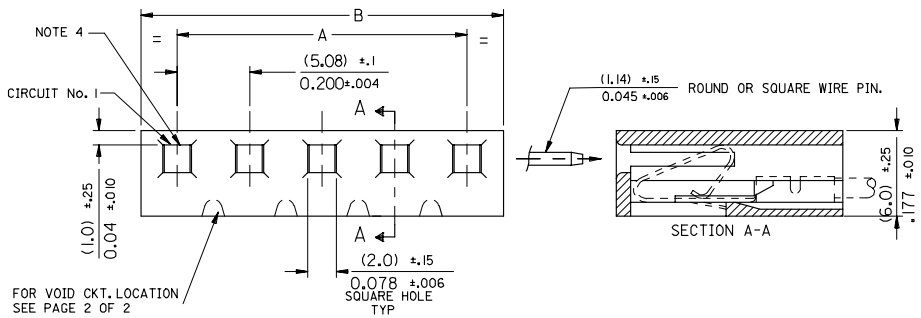
Use With

[2478](#) Crimp Terminals for 18-24 AWG, [2578](#) Crimp Terminals for 22-26 AWG, [2878](#)

PLEASE CHECK WWW.MOLEX.COM FOR LATEST PART INFORMATION



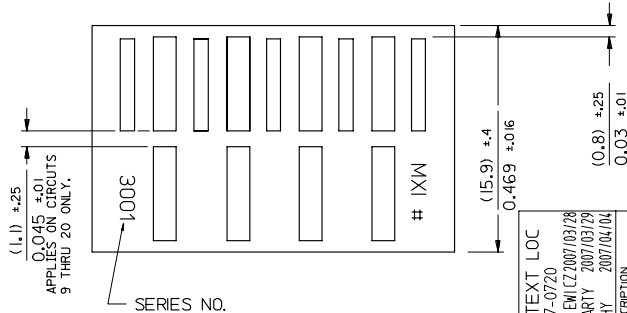
NOTE :
 1. DIMENSIONS SHOWN MILLIMETERS
 2. FOR OTHER PRODUCT SPEC'S. SEE PSX 10-39.
 3. THIS HOUSING USES KK TERM. No's. 2478, 2578 & 28



10-01-1204	E-3001-20	3,800 ±.012	4,000 ±.012	96.52 ±.3	101.60 ±.3
-1194	-19	3,600 ±.012	3,800 ±.012	91.44 ±.3	96.52 ±.3
-1184	-18	3,400 ±.012	3,600 ±.012	86.36 ±.3	91.44 ±.3
-1174	-17	3,200 ±.012	3,400 ±.012	81.28 ±.3	86.36 ±.3
-1164	-16	3,000 ±.010	3,200 ±.010	76.20 ±.25	81.28 ±.3
-1154	-15	2,800 ±.010	3,000 ±.010	71.12 ±.25	76.20 ±.3
-1144	-14	2,600 ±.010	2,800 ±.010	66.04 ±.25	71.12 ±.3
-1134	-13	2,400 ±.010	2,600 ±.010	60.96 ±.25	66.04 ±.3
-1124	-12	2,200 ±.010	2,400 ±.010	55.88 ±.25	60.96 ±.3
-1114	-11	2,000 ±.008	2,200 ±.010	50.80 ±.20	55.88 ±.3
-1104	-10	1,800 ±.008	2,000 ±.010	45.72 ±.20	50.80 ±.3
-1094	-9	1,600 ±.008	1,800 ±.010	40.64 ±.20	45.72 ±.3
-1084	-8	1,400 ±.008	1,600 ±.010	35.56 ±.20	40.64 ±.3
-1074	-7	1,200 ±.008	1,400 ±.010	30.48 ±.20	35.56 ±.3
-1064	-6	1,000 ±.004	1,200 ±.010	25.40 ±.10	30.48 ±.3
-1054	-5	.800 ±.004	1,000 ±.010	20.32 ±.10	25.40 ±.3
-1044	-4	.600 ±.004	.800 ±.010	15.24 ±.10	20.32 ±.3
-1034	-3	.400 ±.004	.600 ±.010	10.16 ±.10	15.24 ±.3
-1024	-2	.200 ±.004	.400 ±.010	5.08 ±.10	10.16 ±.3
10-01-1014	E-3001-1	.200 ±.004	.400 ±.010	5.08 ±.10	10.16 ±.3
		A	B	A	B
PART No.		ENG. No.		ENGLISH METRIC	

CENTER RIB ONLY

MAT'L: NYLON



CORRECT TEXT LOC
 EC NO: E2007-0720
 DR: WDMASZK/LEM/CZ/2007/03/28
 CHK: D. MORIARTY 2007/03/29
 APPR: J. DENNEHY 2007/04/04

QUALITY SYMBOLS	GENERAL TOLERANCES (UNLESS SPECIFIED)	DIMENSION STYLE	SCALE	DESIGN UNITS	THIRD ANGLE PROJECTION
▽=0	4 PLACES ± --- ± ---	MM/IN	7:1	METRIC	
▽=0	3 PLACES ± --- ± .010				
	2 PLACES ± 0.25 ± .014				
	1 PLACE ± 0.35 ± ---				
	ANGULAR ±1/2°				
	DRAFT WHERE APPLICABLE MUST REMAIN WITHIN DIMENSIONS				

DRAWN BY	DATE	TITLE
P. MOORE	1998/09/15	5.08MM KK CRP TERM HSG
CHECKED BY	DATE	
MGOONEY	1999/03/12	
APPROVED BY	DATE	
M. WILHITE	1999/03/12	
MATERIAL NO.	DOCUMENT NO.	
SEE CHART	SDE-3001-N-*	
THIS DRAWING CONTAINS INFORMATION THAT IS PROPRIETARY TO MOLEX INCORPORATED AND SHOULD NOT BE USED WITHOUT WRITTEN PERMISSION		SHEET NO. 1 OF 1

PART NO. SEE CHART
 Dwg. No. SDE-3001-N*

FOR MANUFACTURE IN SINGAPORE ONLY

FOR DIMENSIONS SEE SHEET No.1

VOID CKT. LOCATION	PART No.	ENC. No.	NO OF CKTS.
11	97-00-0919	E-3001-12-11	12
2	NOT TOOLED	E-3001-7-2	7
3	10-01-1080	-8-3	8
5	I -3085	-8-5	8
4	I -3044	-4-4	4
3	I -1030	-3-3	3
2	-1049	-4-2	4
2	-1109	-10-2	10
2	-1099	-9-2	9
5	10-01-1069	E-3001-6-5	6

REDRAWN ON CAD EC NO. E90109 DRWN: P.MOORE 98/09/99 CHK: / / / / APPR: / / / / K	DESCRIPTION MAJOR CRITICAL C	GENERAL TOLERANCES (UNLESS SPECIFIED)		SCALE :	DESIGN UNITS <input type="checkbox"/> mm <input type="checkbox"/> INCH	THIRD ANGLE PROJECTION	DIMENSIONS:		SHT	REV
		mm	INCH	DRAWN BY & DATE	mm mm mm ONLY		TITLE: HOUSING, CONNECTOR, KK (5.08)/.200 CRIMP STYLE TERM. MOLEX INCORPORATED	REVISE ON CAD ONLY		
		4 PLACES ±0.	±.	P.MOORE 98/09/99						
		3 PLACES ±0.	±.	CHECKED BY & DATE						
		2 PLACES ±0.	±.	MGOONEY 12/03/99						
1 PLACE ±0.	±.	APPROVED BY & DATE								
ANGULAR: ± 1/2 °		CAD FILENAME	MATERIAL NO.		DRAWING NO.	SHEET NO.				
DRAFT WHERE APPLICABLE MUST REMAIN WITHIN DIMENSIONS		PM19.DGN	SEE CHART		SDE-3001-N*	2 OF		SIZE B		
THIS DRAWING CONTAINS INFORMATION THAT IS PROPRIETARY TO MOLEX INCORPORATED AND SHOULD NOT BE USED WITHOUT WRITTEN PERMISSION.										