

PLEASE CHECK WWW.MOLEX.COM FOR LATEST PART INFORMATION

Part Number: [0010011024](#)
Status: **Active**
Overview: [kk](#)
Description: 5.08mm (.200") Pitch KK@ Crimp Terminal Housing, 2 Circuits

Documents:

[3D Model](#) [Product Specification PS-99020-0087 \(PDF\)](#)
[Drawing \(PDF\)](#) [RoHS Certificate of Compliance \(PDF\)](#)

Agency Certification

CSA LR19980
 UL E29179

General

Product Family Crimp Housings
 Series [3001](#)
 Overview [kk](#)
 Product Name [KK@](#)

Physical

Circuits (maximum) 2
 Color - Resin Natural
 Flammability 94V-2
 Gender Female
 Glow-Wire Compliant No
 Material - Resin Nylon
 Number of Rows 1
 Packaging Type Bag
 Panel Mount No
 Pitch - Mating Interface (in) 0.200 In
 Pitch - Mating Interface (mm) 5.08 mm
 Temperature Range - Operating -40°C to +105°C

Solder Process Data

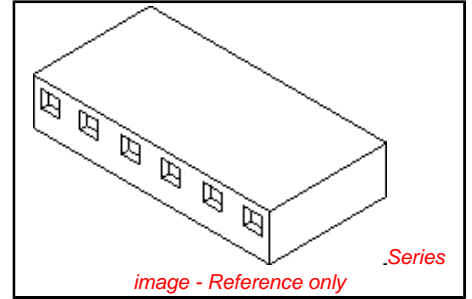
Lead-free Process Capability Wave Capable (TH only)

Material Info

Old Part Number 3001-02

Reference - Drawing Numbers

Product Specification PS-99020-0087
 Sales Drawing SD-91813-001, SDE-3001-N-*



EU RoHS

ELV and RoHS Compliant

REACH SVHC

Not Reviewed

Halogen-Free

Status

Halogen-Free

Need more information on product environmental compliance?

Email productcompliance@molex.com
 For a multiple part number RoHS Certificate of Compliance, [click here](#)

Please visit the [Contact Us](#) section for any non-product compliance questions.

China RoHS



Search Parts in this Series

[3001Series](#)

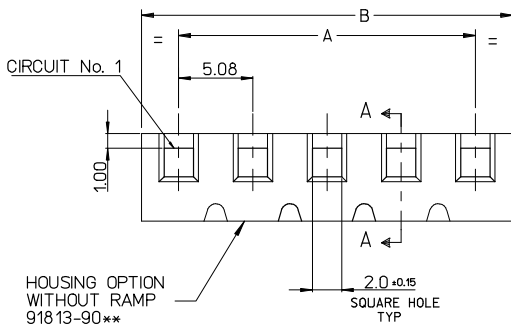
Mates With

[3061](#) , [3003](#) , [3008](#)

Use With

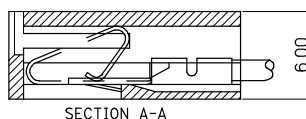
[2478](#) Crimp Terminals for 18-24 AWG, [2578](#) Crimp Terminals for 22-26 AWG, [2878](#)

PLEASE CHECK WWW.MOLEX.COM FOR LATEST PART INFORMATION

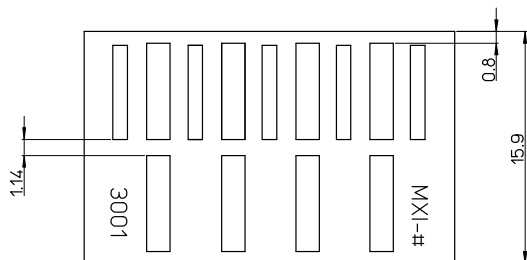


HOUSING OPTION WITHOUT RAMP
91813-90**

1.14 REF. ROUND OR SQUARE PIN.

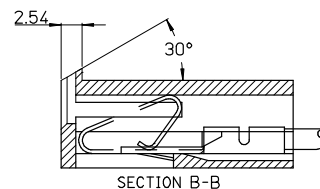


SECTION A-A



HOUSING OPTION WITH RAMP
91813-91**

CIRCUIT No. 1



SECTION B-B

QTY.	PART NO.	PART NO.	DIMENSION	
SIZE	WITHOUT RAMP	WITH RAMP	A	B
20	91813-9020	91813-9120	96.52 ± .3	101.60 ± .3
18	-9019	-9119	91.44 ± .3	96.52 ± .3
18	-9018	-9118	86.36 ± .3	91.44 ± .3
17	-9017	-9117	81.28 ± .3	86.36 ± .3
16	-9016	-9116	76.20 ± .25	81.28 ± .3
15	-9015	-9115	71.12 ± .25	76.20 ± .3
14	-9014	-9114	66.04 ± .25	71.12 ± .3
13	-9013	-9113	60.96 ± .25	66.04 ± .3
12	-9012	-9112	55.88 ± .25	60.96 ± .3
11	-9011	-9111	50.80 ± .20	55.88 ± .3
10	-9010	-9110	45.72 ± .20	50.80 ± .3
9	-9009	-9109	40.64 ± .20	45.72 ± .3
8	-9008	-9108	35.56 ± .20	40.64 ± .3
7	-9007	-9107	30.48 ± .20	35.56 ± .3
6	-9006	-9106	25.40 ± .10	30.48 ± .3
5	-9005	-9105	20.32 ± .10	25.40 ± .3
4	-9004	-9104	15.24 ± .10	20.32 ± .3
3	-9003	-9103	10.16 ± .10	15.24 ± .3
2	91813-9002	91813-9102	5.08 ± .10	10.16 ± .3

NOTE:

1. MATERIAL: POLAMIDE (PA6), UL-94 V-2
COLOUR WHITE
2. THIS HOUSING USES KK TERM. No's: 2478, 2578 & 2878
3. COLOUR VARIATION MAY BE VISIBLE ON THE HOUSING SURFACES
4. PRODUCT SPECIFICATION: PS-99020-0087

ADDED PROD. SPEC
EC NO: E2008-0301
DRAWN: K. IERMAN
CHKD: CHYK
APPR: BMAGUIRE
2008/02/04
2008/02/06
2008/02/07

QUALITY SYMBOLS

 DESCRIPTION

	GENERAL TOLERANCES (UNLESS SPECIFIED)	
	mm	INCH
4 PLACES	± .10	± .004
3 PLACES	± .15	± .005
2 PLACES	± 0.25	± .010
1 PLACE	± 0.35	± .015
ANGULAR		± 1/2°

DRAFT WHERE APPLICABLE MUST REMAIN WITHIN DIMENSIONS

DIMENSION STYLE
MM ONLY

DRAWN BY: DWASZKIEWICZ
DATE: 2006/06/08

CHECKED BY: J. DENNEHY

APPROVED BY: J. DENNEHY

MATERIAL NO. SEE CHART

SCALE: 7:1

DESIGN UNITS: METRIC

THIRD ANGLE PROJECTION

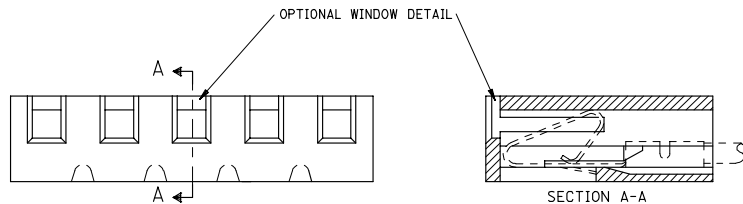
TITLE: 5.08MM KK CRP TERM HSG GLOW WIRE COMPATIBLE

MOLEX INCORPORATED

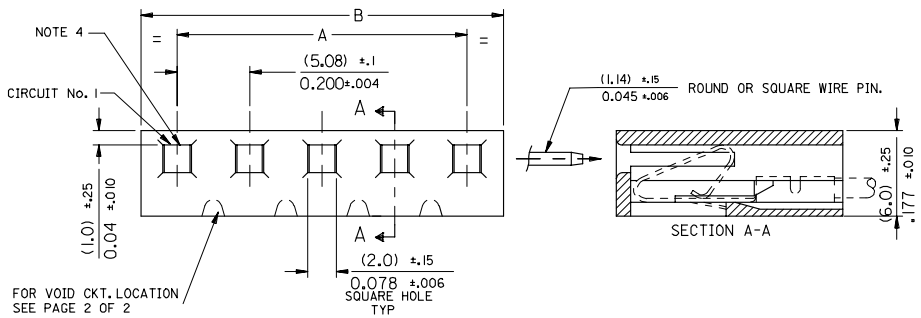
DOCUMENT NO. SD-91813-001

SHEET NO. 1 OF 1

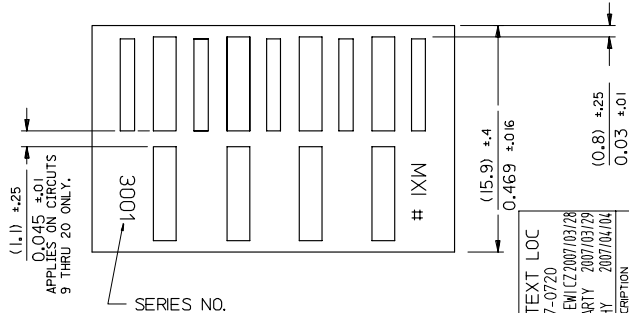
THIS DRAWING CONTAINS INFORMATION THAT IS PROPRIETARY TO MOLEX INCORPORATED AND SHOULD NOT BE USED WITHOUT WRITTEN PERMISSION



NOTE :
 1. DIMENSIONS SHOWN IN MILLIMETERS
 2. FOR OTHER PRODUCT SPEC'S, SEE PSX 10-39.
 3. THIS HOUSING USES KK TERM. No's. 2478, 2578 & 28



FOR VOID CKT. LOCATION SEE PAGE 2 OF 2



10-01-1204	E-3001-20	3,800 ±.012	4,000 ±.012	96.52 ±.3	101.60 ±.3
-1194	-19	3,600 ±.012	3,800 ±.012	91.44 ±.3	96.52 ±.3
-1184	-18	3,400 ±.012	3,600 ±.012	86.36 ±.3	91.44 ±.3
-1174	-17	3,200 ±.012	3,400 ±.012	81.28 ±.3	86.36 ±.3
-1164	-16	3,000 ±.010	3,200 ±.010	76.20 ±.25	81.28 ±.3
-1154	-15	2,800 ±.010	3,000 ±.010	71.12 ±.25	76.20 ±.3
-1144	-14	2,600 ±.010	2,800 ±.010	66.04 ±.25	71.12 ±.3
-1134	-13	2,400 ±.010	2,600 ±.010	60.96 ±.25	66.04 ±.3
-1124	-12	2,200 ±.010	2,400 ±.010	55.88 ±.25	60.96 ±.3
-1114	-11	2,000 ±.008	2,200 ±.010	50.80 ±.20	55.88 ±.3
-1104	-10	1,800 ±.008	2,000 ±.010	45.72 ±.20	50.80 ±.3
-1094	-9	1,600 ±.008	1,800 ±.010	40.64 ±.20	45.72 ±.3
-1084	-8	1,400 ±.008	1,600 ±.010	35.56 ±.20	40.64 ±.3
-1074	-7	1,200 ±.008	1,400 ±.010	30.48 ±.20	35.56 ±.3
-1064	-6	1,000 ±.004	1,200 ±.010	25.40 ±.10	30.48 ±.3
-1054	-5	.800 ±.004	1,000 ±.010	20.32 ±.10	25.40 ±.3
-1044	-4	.600 ±.004	.800 ±.010	15.24 ±.10	20.32 ±.3
-1034	-3	.400 ±.004	.600 ±.010	10.16 ±.10	15.24 ±.3
-1024	-2	.200 ±.004	.400 ±.010	5.08 ±.10	10.16 ±.3
10-01-1014	E-3001-1	.200 ±.004	.400 ±.010	5.08 ±.10	10.16 ±.3
PART No.	ENG. No.	A	B	A	B
		ENGLISH		METRIC	

CORRECT TEXT LOC EC NO: E2007-0720 DRWNO: MSZKLEWICZ 2007/03/28 CHKD: MURPHY 2007/03/29 APPR: DENNEHY 2007/04/04	QUALITY SYMBOLS ▽=0 ▽=0	GENERAL TOLERANCES (UNLESS SPECIFIED)	DIMENSION STYLE MM/IN	SCALE 7:1	DESIGN UNITS METRIC	THIRD ANGLE PROJECTION
		4 PLACES ± --- ± --- 3 PLACES ± --- ± .010 2 PLACES ± 0.25 ± .014 1 PLACE ± 0.35 ± --- ANGULAR ±1/2°	DRAWN BY P. MOORE DATE 1998/09/15	TITLE 5.08MM KK CRP TERM HSG	MOLEX INCORPORATED	
REV	DESCRIPTION	DRAFT WHERE APPLICABLE MUST REMAIN WITHIN DIMENSIONS	SEE CHART	DOCUMENT NO. SDE-3001-N-*	THIS DRAWING CONTAINS INFORMATION THAT IS PROPRIETARY TO MOLEX INCORPORATED AND SHOULD NOT BE USED WITHOUT WRITTEN PERMISSION	

PART NO. SEE CHART
 DWG. NO. SDE-3001-N*

FOR MANUFACTURE IN SINGAPORE ONLY

FOR DIMENSIONS SEE SHEET No.1

VOID CKT. LOCATION	PART No.	ENC. No.	NO OF CKTS.
11	97-00-0919	E-3001-12-11	12
2	NOT TOOLED	E-3001-7-2	7
3	10-01-1080	-8-3	8
5	1-3085	-8-5	8
4	1-3044	-4-4	4
3	1-1030	-3-3	3
2	-1049	-4-2	4
2	-1109	-10-2	10
2	-1099	-9-2	9
5	10-01-1069	E-3001-6-5	6

REDRAWN ON CAD EC NO. E90109 DRWN: P.MOORE 98/09/99 CHK: / / / / APPR: / / / / K	QUALITY SYMBOLS MAJOR CRITICAL C	GENERAL TOLERANCES: (UNLESS SPECIFIED)		SCALE :	DESIGN UNITS	THIRD ANGLE PROJECTION	DIMENSIONS: <input checked="" type="checkbox"/> mm <input type="checkbox"/> INCH <input type="checkbox"/> mm <input type="checkbox"/> INCH ONLY	SHT	REV
		mm	INCH	mm	INCH				
		4 PLACES	±0.1	±.	DRAWN BY & DATE		TITLE:		
		3 PLACES	±0.1	±.	P.MOORE 98/09/99		HOUSING, CONNECTOR, KK (5.08)/.200		
		2 PLACES	±0.1	±.	CHECKED BY & DATE		CRIMP STYLE TERM.		
		1 PLACE	±0.1	±.	MGOONEY 12/03/99		MOLEX INCORPORATED		
		ANGULAR: ± 1/2 °		APPROVED BY & DATE		MATERIAL NO.			
		DRAFT WHERE APPLICABLE MUST REMAIN WITHIN DIMENSIONS		MWILHITE 12/03/99		CAD FILENAME		DRAWING NO.	
				PM19.DGN		SEE CHART		SDE-3001-N-*	
				THIS DRAWING CONTAINS INFORMATION THAT IS PROPRIETARY TO MOLEX INCORPORATED AND SHOULD NOT BE USED WITHOUT WRITTEN PERMISSION.		SHEET NO.		2 OF	
						SIZE		B	