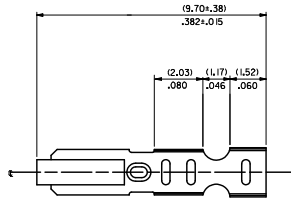
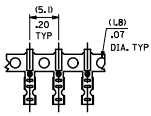


20 19 18 17 16 15 14 13 12 11 10 9 8 7 6 5 4 3 2 1

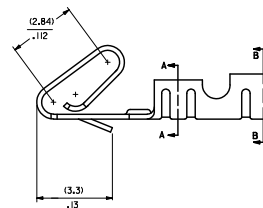
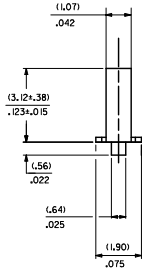
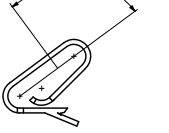
CARRIER VIEW



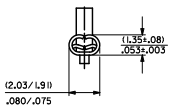
NOTES:

- MATERIAL:
0.20/.008 THICK BRASS
- FINISH:
122 - OVERALL TIN: (0.0038)/.000150 MIN. TIN OVER (0.00076)/.000030 MIN NICKEL
154 - OVERALL TIN: (0.00254)/.000000 MIN. TIN OVER (0.00127)/.000050 MIN NICKEL
P909 - OVERALL HOT TIN DIP: (0.00254)/.000100 MIN.
550 - SELECT GOLD: (0.00038)/.000015 MIN.
OVERALL GOLD FLASH: (0.00005)/.000002 MIN.
OVERALL NICKEL UNDERPLATE: (0.00076)/.000030 MIN.
555 - SELECT GOLD (0.00038)/.000015 MIN.
OVERALL NICKEL UNDERPLATE: (0.00076)/.000030
558 - SELECT GOLD: (0.00076)/.000030 MIN.
OVERALL GOLD FLASH: (0.00005)/.000002 MIN.
OVERALL NICKEL UNDERPLATE: (0.00127)/.000050 MIN.
- PRODUCT SPEC: PS-10-07
- PACKAGING SPECIFICATION: LOOSE TERMINALS PER PK-2759-001
CHAIN FORM TERMINALS: NONE
- CRIMP IS FOR 22-30 GA WIRE WITH (157)/.062 DIA INSULATION MAX.
- INSERTION FORCE OF TERMINAL INTO (25.4)/.00 CENTERLINE CONNECTOR IS 2.5 LBS. MAX
- TERMINAL RETENTION IN HOUSING IS 26.7N / 6LBS MIN. WHEN PULLED AT THE RATE OF (25.4MM) / 1 INCH PER MINUTE.
- DIMENSIONS GIVEN ACROSS CENTERLINES ARE SYMMETRICAL ABOUT THOSE CENTERLINES WITHIN HALF THE TOTAL TOLERANCE.
- THIS PART CONFORMS TO CLASS B REQUIREMENTS OF COSMETIC SPECIFICATION PS-45499-002.

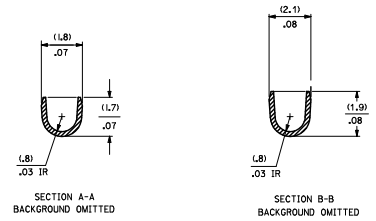
SELECT GOLD LOCATION



CRIMP DETAIL



CRIMPED TERMINAL 2759-(P909) IS USED WITHOUT WIRE AND IS INSERTED INTO HOUSING TO PROVIDE TENSION WHEN ASSEMBLED TO HEADERS DURING SHIPMENT.



SECTION A-A
BACKGROUND OMITTED

SECTION B-B
BACKGROUND OMITTED

2759-(****)

- FORM
- L=LOOSE
- C=LOOSE CRIMPED
- A=CHAIN PER ES-339-A
- B=CHAIN PER ES-339-B
- PLATING
- SEE NOTE 2

REVISE NOTE 7 REV. NO. 17-20 DATE 2012/03/20 DRAWN BY CHYKRAMPER CHECKED BY JAPPELSEN APPROVED BY AV	QUALITY SYMBOLS ∇=0 ∇=0 ∇=0	GENERAL TOLERANCES (UNLESS SPECIFIED) 4 PLACES ±.010 ±.010 3 PLACES ±.010 ±.010 2 PLACES ±0.25 ±.014 1 PLACE ±0.36 ±.010 0 PLACE ±.010 ±.010 ANGULAR ±1/2°	DIMENSION STYLE MM/IN DRAWN BY DATE SAMIEC 07/28/87 CHECKED BY DATE PATEL 07/28/87 APPROVED BY DATE PSMITH 2012/03/20	SCALE DESIGN UNITS INCH THIRD ANGLE PROJECTION	CRIMP TERMINAL 22-30 GA WIRE 	MATERIAL NO. SEE CHART DOCUMENT NO. SD-2759	SHEET NO. 1 OF 2
	DRAFT WHERE APPLICABLE MUST REMAIN WITHIN DIMENSIONS						
	THIS DRAWING CONTAINS INFORMATION THAT IS PROPRIETARY TO MOLEX INCORPORATED AND SHOULD NOT BE USED WITHOUT WRITTEN PERMISSION						
	10-frame_D.P_AH.T Rev. 5 2012/03/11						

10-frame_D.P_AH.T Rev. 5 2012/03/11

19 18 17 16 15 14 13 12 11 10 9 8 7 6 5 4 3 2 1

