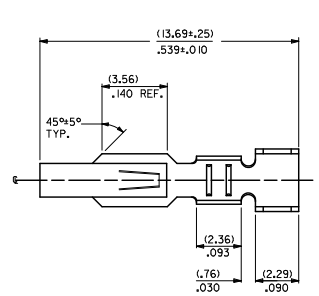
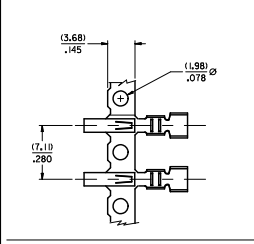


20 19 18 17 16 15 14 13 12 11 10 9 8 7 6 5 4 3 2 1



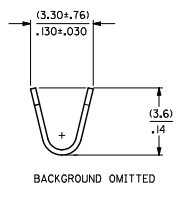
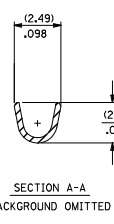
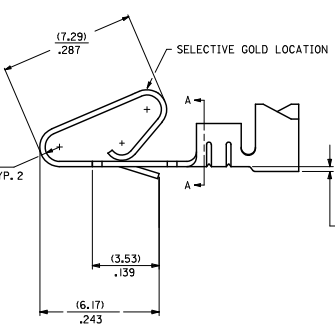
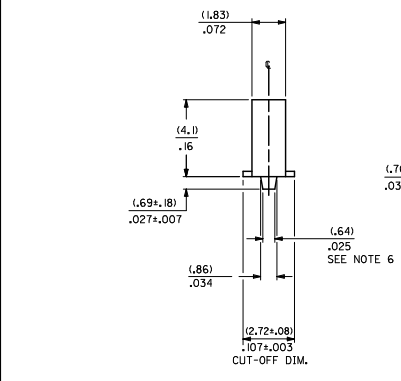
2478- \* \* \* \* \*

MATERIAL CODE  
 (.27)/.0106 THK  
 1=BRASS  
 3=PHOS BRONZE

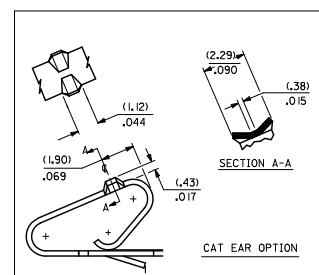
OPTION CODE  
 BLANK=AS SHOWN  
 C=CAT EAR OPTION

WINDING SPEC.  
 A=PER ES-339-A  
 BLANK=PER ES-339-B  
 L=LOOSE

- FINISH:
- (P909) OVERALL HOT TIN DIP: (0.00254)/.000100 MIN.
  - (122) OVERALL TIN: (0.00381)/.000150 MIN.
  - OVER (0.00076)/.000030 MIN. NICKEL
  - (154) OVERALL TIN: (0.00254)/.000100 MIN.
  - OVER (0.00127)/.000050 MIN. NICKEL
  - (224) OVERALL MATTE TIN: (0.00508)/.000200 MIN.
  - OVER (0.00127)/.000050 MIN. NICKEL
  - (550) SELECT GOLD: (0.000381)/.000015 MIN.
  - OVERALL GOLD FLASH: (0.00005)/.000002 MIN.
  - OVERALL NICKEL UNDERPLATE: (0.00076)/.000030 MIN.
  - (555) SELECT GOLD: (0.000381)/.000015 MIN.
  - OVERALL NICKEL UNDERPLATE: (0.00076)/.000030 MIN.
  - (558) SELECT GOLD: (0.00076)/.000030 MIN.
  - OVERALL GOLD FLASH: (0.00005)/.000002 MIN.
  - OVERALL NICKEL UNDERPLATE: (0.00127)/.000050 MIN.
  - (561) SELECT GOLD: (0.00076)/.000030 MIN.
  - OVERALL NICKEL UNDERPLATE: (0.00127)/.000050 MIN.
  - (591) SELECT GOLD: (0.00127)/.000050 MIN.
  - OVERALL GOLD FLASH: (0.00005)/.000002 MIN.
  - OVERALL NICKEL UNDERPLATE: (0.00127)/.000050 MIN.



- NOTES:
1. MATERIAL: SEE LEGEND
  2. FINISH: SEE LEGEND
  3. THIS PART CONFORMS TO PRODUCT SPECIFICATION PS-08-50.
  4. PACKAGING SPECIFICATION: LOOSE TERMINALS: PER PK-2759-001  
CHAIN FORM TERMINALS: NONE
  5. DIMENSIONS GIVEN ACROSS CENTERLINES ARE SYMMETRICAL ABOUT THOSE CENTERLINES WITHIN HALF THE TOTAL TOLERANCE.
  6. (0.86 ±0.05)/.034 ±.002 IS AN OPTIONAL DESIGN.
  7. CRIMP ACCEPTS 18 TO 24 AWG WIRE WITH (2.79)/.110 MAX. INSULATION DIAMETER. AND CAN ACCEPT (3.00)/.118 MAX. INSULATION DIAMETER WITH SPECIAL TOOLING.
  8. TERMINAL FOR USE IN 2139, 3001, 3069, AND 91813 SERIES HOUSINGS WITH (2.54)/.100 MAX. INSULATION DIAMETER. 2574, 6422, AND 5239 SERIES HOUSINGS WITH (2.79)/.110 MAX. INSULATION DIAMETER. AND 41695 SERIES HOUSING WITH (3.00)/.118 MAX. INSULATION DIAMETER.
  9. THIS PART CONFORMS TO CLASS B REQUIREMENTS OF COSMETIC SPECIFICATION PS-45499-002.



REMOVE ZOB PLATING REWORK PER 2010/03/20 CHEKMAT KIPPER 2010/03/27 APPROVAL: [Signature]	QUALITY SYMBOLS	GENERAL TOLERANCES (UNLESS SPECIFIED)	DIMENSION STYLE	SCALE	DESIGN UNITS	THIRD ANGLE PROJECTION
	$\nabla=0$ $\nabla=0$ $\nabla=0$	4 PLACES ±.--- ±.--- 3 PLACES ±.--- ±.010 2 PLACES ±.025 ±.014 1 PLACE ±.036 ±.--- ANGULAR ±1/2°	MM/IN	10:1	INCH	<input checked="" type="checkbox"/> THIRD ANGLE <input type="checkbox"/> FIRST ANGLE
	DRAWN BY: SAMIEC CHECKED BY: [Signature] APPROVED BY: FSMITH	DATE: 06/03/86 DATE: 06/03/86 DATE: 2012/03/20	TITLE: CRIMP TERMINAL .156 CENTERS 18 TO 24 GA WIRE	MATERIAL NO.: SEE CHART DOCUMENT NO.: SD-2478	SHEET NO.: 1 OF 2	
	DRAFT WHERE APPLICABLE MUST REMAIN WITHIN DIMENSIONS					THIS DRAWING CONTAINS INFORMATION THAT IS PROPRIETARY TO MOLEX INCORPORATED AND SHOULD NOT BE USED WITHOUT WRITTEN PERMISSION

19 18 17 16 15 14 13 12 11 10 9 8 7 6 5 4 3 2 1

2478-1-(***)*			2478-3-(***)*			2478-1C-(***)*			2478-3C-(***)*		
PART NO.	ENG. NO.		PART NO.	ENG. NO.		PART NO.	ENG. NO.		PART NO.	ENG. NO.	
08-50-0105	2478-1-(P909)		08-52-0071	2478-3-(P909)		08-50-0091	2478-1C-(154)		08-52-0044	2478-3C-(P909)	
08-50-0106	2478-1-(P909)L		08-52-0072	2478-3-(P909)L		08-50-0093	2478-1C-(154)L		08-52-0045	2478-3C-(P909)L	
08-56-0105	2478-1-(550)		08-65-0114	2478-3-(555)					08-52-0023	2478-3C-(154)	
08-56-0106	2478-1-(550)L		08-65-0115	2478-3-(555)L					08-52-0024	2478-3C-(154)L	
08-55-0103	2478-1-(555)		08-52-0811	2478-3-(154)							
08-55-0104	2478-1-(555)L		08-52-0812	2478-3-(154)L							
08-50-0119	2478-1-(122)		08-50-0281	2478-3-(122)							
08-50-0120	2478-1-(122)L										
08-50-0271	2478-1-(P909)A		08-58-0121	2478-3-(550)							
08-50-0015	2478-1-(154)		08-58-0122	2478-3-(550)L							
08-50-0016	2478-1-(154)L		08-58-0103	2478-3-(591)							
08-50-0063	2478-1-(224)		08-58-0104	2478-3-(591)L							
08-50-0064	2478-1-(224)L		08-58-0114	2478-3-(558)							
08-55-0133	2478-1-(561)		08-58-0115	2478-3-(558)L							
08-55-0134	2478-1-(561)L										

REMOVE 208 BIG FROM LEADERS CHECKED BY JAGUILAR 2012/03/20 CHECKED BY KIPPER 2012/03/21 APPROVED BY APRIL SMITH 2012/03/21	QUALITY SYMBOLS	GENERAL TOLERANCES (UNLESS SPECIFIED)		DIMENSION STYLE		SCALE	DESIGN UNITS	THIRD ANGLE PROJECTION	
	▽=0	4 PLACES ± .010		MM/IN		1:1	INCH		
	▽=0	3 PLACES ± .010							
	▽=0	2 PLACES ± 0.25							
		1 PLACE ± 0.36							
		ANGULAR ± 1/2°							
DRAFT WHERE APPLICABLE MUST REMAIN WITHIN DIMENSIONS				DRAWN BY SAMIEC 06/03/86		DATE 06/03/86		TITLE CRIMP TERMINAL .156 CENTERS 18 TO 24 GA WIRE	
				CHECKED BY PATEL 06/03/86		DATE 06/03/86			
				APPROVED BY F SMITH 2012/03/20		DATE 2012/03/20		MOLEX INCORPORATED	
				MATERIAL NO. SEE CHART		DOCUMENT NO. SD-2478		SHEET NO. 2 OF 2	
THIS DRAWING CONTAINS INFORMATION THAT IS PROPRIETARY TO MOLEX INCORPORATED AND SHOULD NOT BE USED WITHOUT WRITTEN PERMISSION									