

**PLEASE CHECK WWW.MOLEX.COM FOR LATEST PART INFORMATION**

**Part Number:** [0002092105](#)  
**Status:** **Active**  
**Description:** Board-In Crimp Terminal, Series 4706, Male, Tin (Sn) Plated Brass Contact, 16-18 AWG, 11.20mm (.440") Terminal Progression

**Documents:**

[Drawing \(PDF\)](#) [RoHS Certificate of Compliance \(PDF\)](#)  
[Product Specification PS-4706-001 \(PDF\)](#)

**General**

Product Family	Crimp Terminals
Series	4706
Comments	Progression 11.20 (.440)
Crimp Quality Equipment	Yes
Product Name	Board-In Stand Alone Terminal

**Physical**

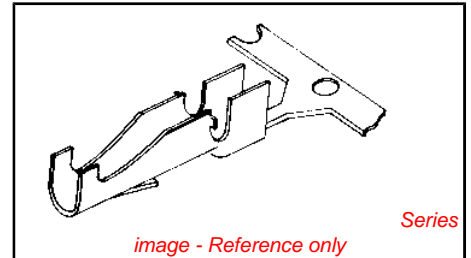
Gender	Male
Material - Metal	Brass
Material - Plating Mating	Tin
Material - Plating Termination	Tin
Packaging Type	Reel
Plating min: Mating (µin)	100
Plating min: Mating (µm)	2.50
Plating min: Termination (µin)	100
Plating min: Termination (µm)	2.50
Termination Interface: Style	Crimp or Compression
Wire Insulation Diameter	3.05mm (.120") max.
Wire Size AWG	16, 18
Wire Size mm <sup>2</sup>	N/A

**Material Info**

Old Part Number	4706-(P909)
-----------------	-------------

**Reference - Drawing Numbers**

Product Specification	PS-4706-001
Sales Drawing	SD-4706



<b>EU RoHS</b> ELV and RoHS Compliant REACH SVHC Contains SVHC: No Halogen-Free Status Halogen-Free	<b>China RoHS</b> 
--	--

**Need more information on product environmental compliance?**

Email [productcompliance@molex.com](mailto:productcompliance@molex.com)  
 For a multiple part number RoHS Certificate of Compliance, [click here](#)

Please visit the [Contact Us](#) section for any non-product compliance questions.

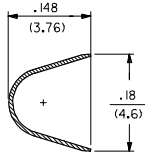
**Search Parts in this Series**  
4706Series

**Application Tooling | FAQ**  
*Tooling specifications and manuals are found by selecting the products below. Crimp Height Specifications are then contained in the Application Tooling Specification document.*

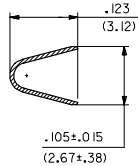
Global	
Description	Product #
Hand Crimper	<a href="#">0011010065</a>
Terminator Die	<a href="#">0011402042</a>
Terminator Die	<a href="#">0011402044</a>
- OVERLAP	
INSULATION CRIMP	
Mini-Mac™	<a href="#">0638934000</a>
Applicator	

**PLEASE CHECK WWW.MOLEX.COM FOR LATEST PART INFORMATION**

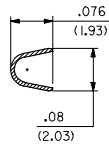
13 12 11 10 9 8 7 6 5 4 3 2 1



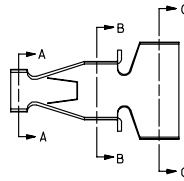
SECTION C-C



SECTION B-B

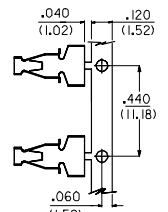


SECTION A-A



NOTES:

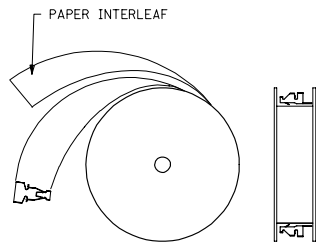
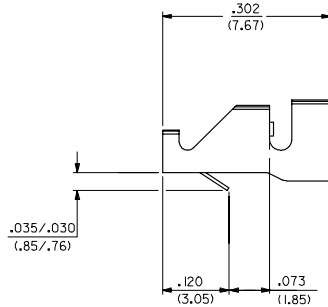
1. MATERIAL: 260 BRASS .008 THK
2. TERMINAL 4706-(\*\*\*)\* ACCEPTS 16 TO 18 AWG WIRE WITH INSULATION DIA OF .120 MAX
3. TERMINALS CONFORM TO SOLDERABILITY SPEC I52
4. PRODUCT SPECIFICATION: PS-4706-001



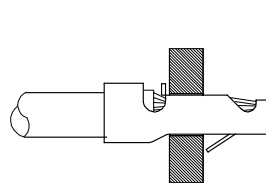
CARRIER DETAIL

4706-\*(\*\*\*\*)\*  
 BLANK=SEE SHT 1  
 3=SEE SHEET 2  
 FORM  
 BLANK=CHAIN  
 L=LOOSE  
 PLATING PER SDES-88  
 \*(P909) OVERALL HOT TIN DIP: 2.54 MICROMETERS MIN

\*THE PRIMARY SHIPPING CARTON WILL BE LABELED "COMPLIANT TO RoHS DIRECTIVE 2002/95/EC AND ELV ANNEX II OF DIRECTIVE 2000/53/EC." CARTONS WITHOUT THIS LABEL MAY CONTAIN PRODUCT WITH TIN-LEAD PLATING.



WINDING SPEC



RECOMMENDED PC BOARD

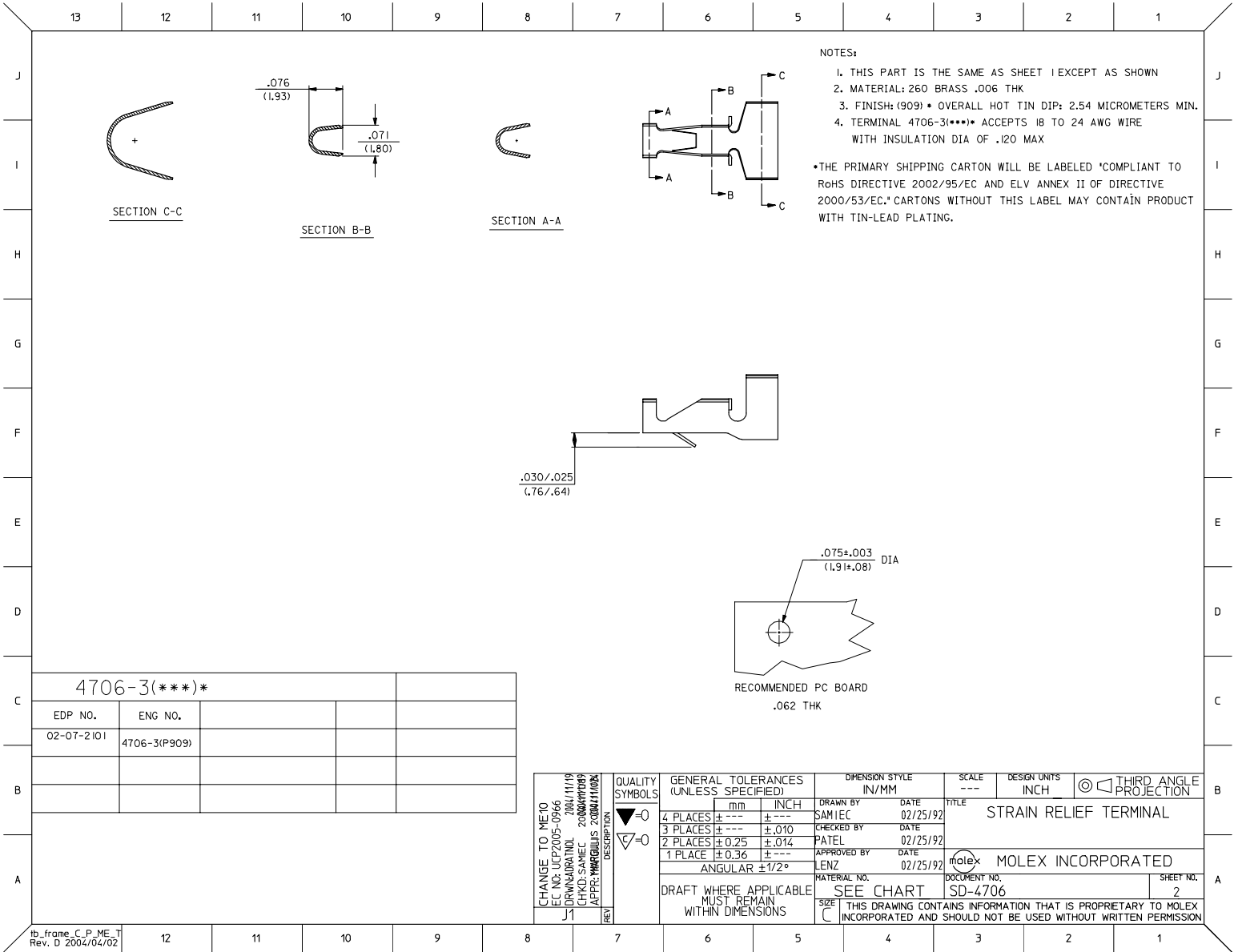
4706-(\*\*\*)\*

EDP NO.	ENG NO.		
02-09-2105	4706-(P909)		
-	- ( )		
-	- ( )		

CHANGE TO ME10 EC NO: UCP2005-0966 DRAWN/IN/DEL: 788/11/19 CHKD: SAMIEC 2006/07/29 APPR: WANGJULIS 2006/07/29	QUALITY SYMBOLS	GENERAL TOLERANCES (UNLESS SPECIFIED)	DIMENSION STYLE	.062 STAKE	DESIGN UNITS	THIRD ANGLE PROJECTION
	▽=0	4 PLACES ± --- ± ---	IN/MM	---	INCH	
	▽=0	3 PLACES ± --- ± .010				
		2 PLACES ± 0.25 ± .014				
	1 PLACE ± 0.36 ± ---	ANGULAR ±1/2°				
	DESCRIPTION	DRAFT WHERE APPLICABLE MUST REMAIN WITHIN DIMENSIONS	DRAWN BY: SAMIEC	DATE: 02/25/92	TITLE: STRAIN RELIEF TERMINAL	
			CHECKED BY: PATEL	DATE: 02/25/92	APPROVED BY: LENZ	
				DATE: 02/25/92	MATERIAL NO. SEE CHART	
					DOCUMENT NO. SD-4706	
					SHEET NO. 1 OF 2	
					THIS DRAWING CONTAINS INFORMATION THAT IS PROPRIETARY TO MOLEX INCORPORATED AND SHOULD NOT BE USED WITHOUT WRITTEN PERMISSION	

tb\_frame\_C\_P\_ME\_T  
Rev. D 2004/04/02

12 11 10 9 8 7 6 5 4 3 2 1



**NOTES:**

1. THIS PART IS THE SAME AS SHEET 1 EXCEPT AS SHOWN
  2. MATERIAL: 260 BRASS .006 THK
  3. FINISH: (909) • OVERALL HOT TIN DIP: 2.54 MICROMETERS MIN.
  4. TERMINAL 4706-3(\*\*\*)\* ACCEPTS 18 TO 24 AWG WIRE WITH INSULATION DIA OF .120 MAX
- THE PRIMARY SHIPPING CARTON WILL BE LABELED 'COMPLIANT TO RoHS DIRECTIVE 2002/95/EC AND ELV ANNEX II OF DIRECTIVE 2000/53/EC.' CARTONS WITHOUT THIS LABEL MAY CONTAIN PRODUCT WITH TIN-LEAD PLATING.

4706-3(\*\*\*)\*

EDP NO.	ENG NO.		
02-07-2101	4706-3(P909)		

CHANGE TO ME10 EC NO: UCP2005-0966 DRAWN BY: J1 CHKD: SAMIEC 2006/07/09 APPR: PHILIP GULLIS 2006/11/09	QUALITY SYMBOLS	GENERAL TOLERANCES (UNLESS SPECIFIED)	DIMENSION STYLE IN/MM	SCALE ---	DESIGN UNITS INCH	THIRD ANGLE PROJECTION
	▽=0	4 PLACES ± --- ± ---	DRAWN BY: SAMIEC DATE: 02/25/92			TITLE: STRAIN RELIEF TERMINAL
▽=0	3 PLACES ± --- ± .010	CHECKED BY: PATEL DATE: 02/25/92				MATERIAL NO. SD-4706
	2 PLACES ± 0.25 ± .014	APPROVED BY: LENZ DATE: 02/25/92				DOCUMENT NO. SD-4706
	1 PLACE ± 0.36 ± ---					SHEET NO. 2
	ANGULAR ±1/2°					
		DRAFT WHERE APPLICABLE MUST REMAIN WITHIN DIMENSIONS	SIZE C			

tb\_frame\_C\_P\_ME\_T  
Rev. D 2004/04/02