

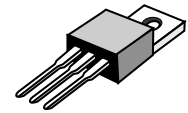
**Switchmode
Dual Fast Recovery Power Rectifiers**

... Designed for use in switching power supplies, inverters and as free wheeling diodes. These state-of-the-art devices have the following features:

- * Glass Passivated chip junctions
- * Low Reverse Leakage Current
- * Fast Switching for High Efficiency
- * 150 °C Operating Junction Temperature
- * Low Forward Voltage , High Current Capability
- * Plastic Material used Carries Underwriters Laboratory Flammability Classification 94V-O

**FAST RECOVERY
RECTIFIERS**

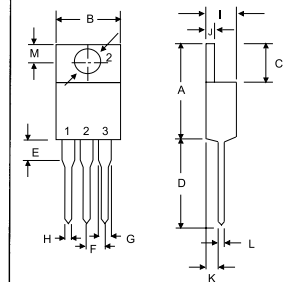
**16 AMPERES
50 -- 200 VOLTS**



TO-220AB

MAXIMUM RATINGS

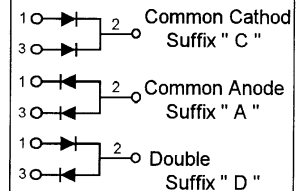
Characteristic	Symbol	F16C				Unit
		05	10	15	20	
Peak Repetitive Reverse Voltage Working Peak Reverse Voltage DC Blocking Voltage	V_{RRM} V_{RWM} V_R	50	100	150	200	V
RMS Reverse Voltage	$V_{R(RMS)}$	35	70	105	140	V
Average Rectifier Forward Current Per Leg Per Total Device	$I_{F(AV)}$	8.0 16				A
Peak Repetitive Forward Current (Rate V_R , Square Wave, 20kHz, $T_c=125^\circ\text{C}$)	I_{FM}	16				A
Non-Repetitive Peak Surge Current (Surge applied at rate load conditions halfwave, single phase, 60Hz)	I_{FSM}	150				A
Operating and Storage Junction Temperature Range	T_J, T_{stg}	- 65 to + 150				°C



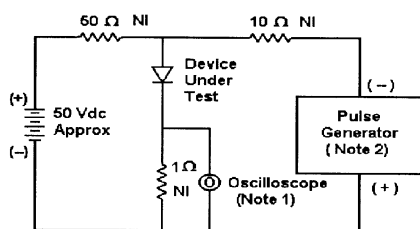
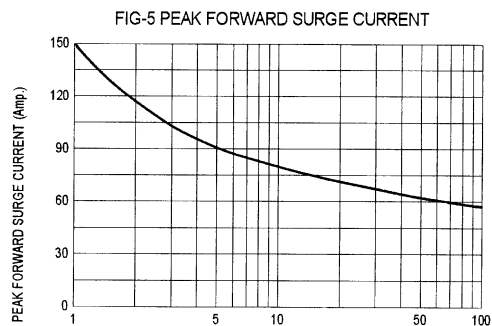
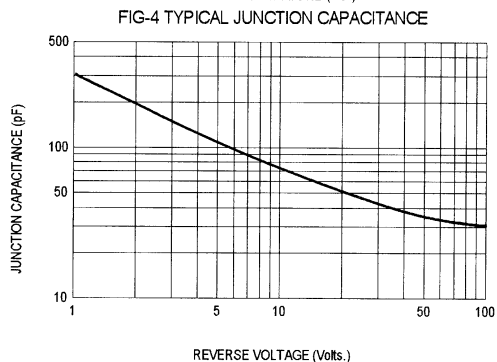
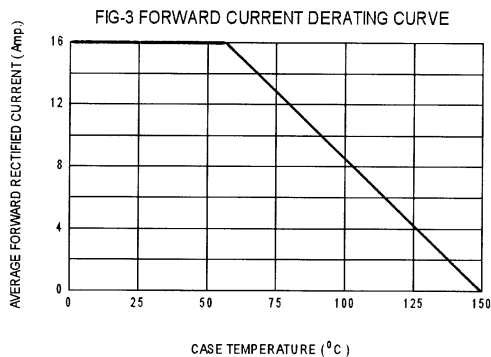
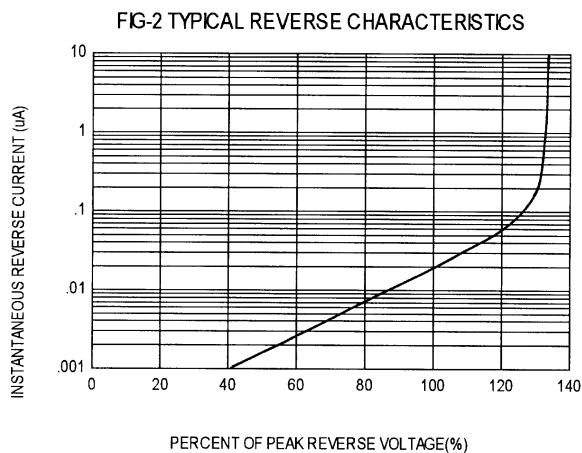
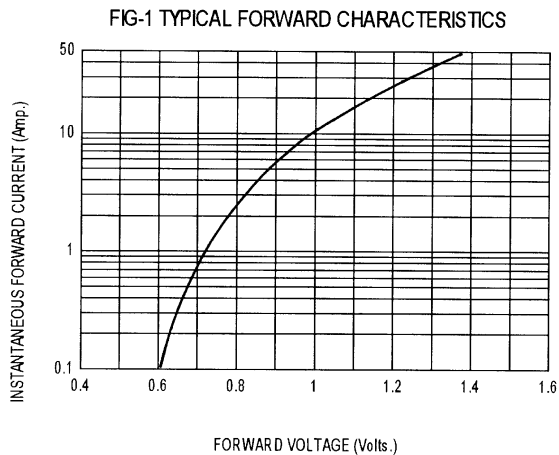
DIM	MILLMETERS	
	MIN	MAX
A	14.68	15.32
B	9.78	10.42
C	6.01	6.52
D	13.06	14.62
E	3.57	4.07
F	2.42	2.66
G	1.12	1.36
H	0.72	0.96
I	4.22	4.98
J	1.14	1.36
K	2.20	2.97
L	0.33	0.55
M	2.48	2.98
O	3.70	3.90

ELECTRICAL CHARACTERISTICS

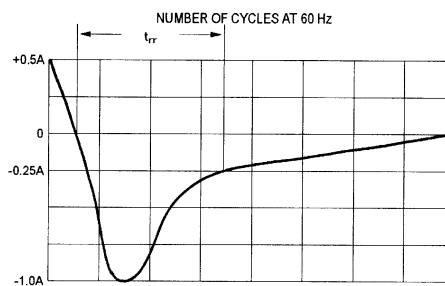
Characteristic	Symbol	F16C				Unit
		05	10	15	20	
Maximum Instantaneous Forward Voltage ($I_F=8.0$ Amp, $T_c = 25^\circ\text{C}$)	V_F	1.30				V
Maximum Instantaneous Reverse Current (Rated DC Voltage, $T_c = 25^\circ\text{C}$) (Rated DC Voltage, $T_c = 125^\circ\text{C}$)	I_R	10 500				uA
Reverse Recovery Time ($I_F = 0.5$ A, $I_R = 1.0$, $I_{rr} = 0.25$ A)	T_{rr}	150				ns
Typical Junction Capacitance (Reverse Voltage of 4 volts & $f=1$ MHz)	C_P	120				pF



F16C05 Thru F16C20



- Notes:
1. Rise Time = 7 ns max. Input Impedance = 1 M Ω, 22 pF
 2. Rise Time = 10 ns max. Input Impedance = 50 Ω



Set time base for 50 ns/div

Fig-6 Reverse Recovery Time Characteristic and Test Circuit Diagram