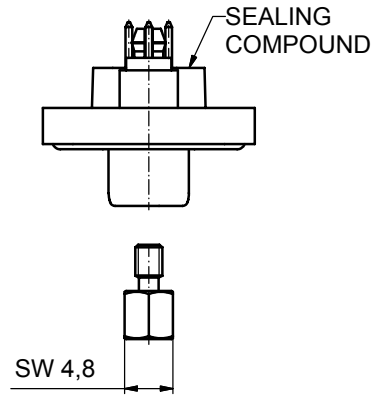
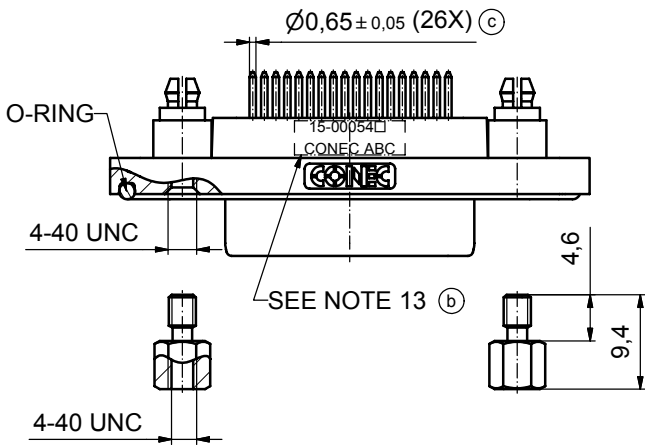
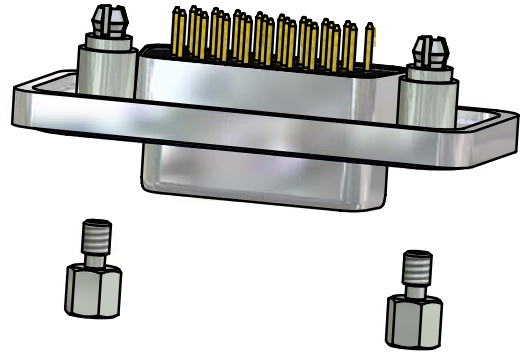
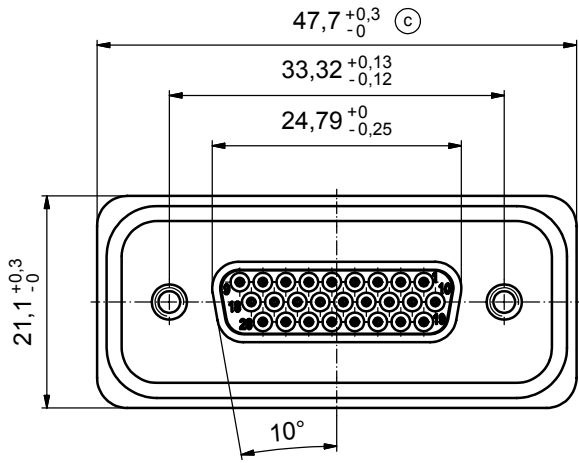
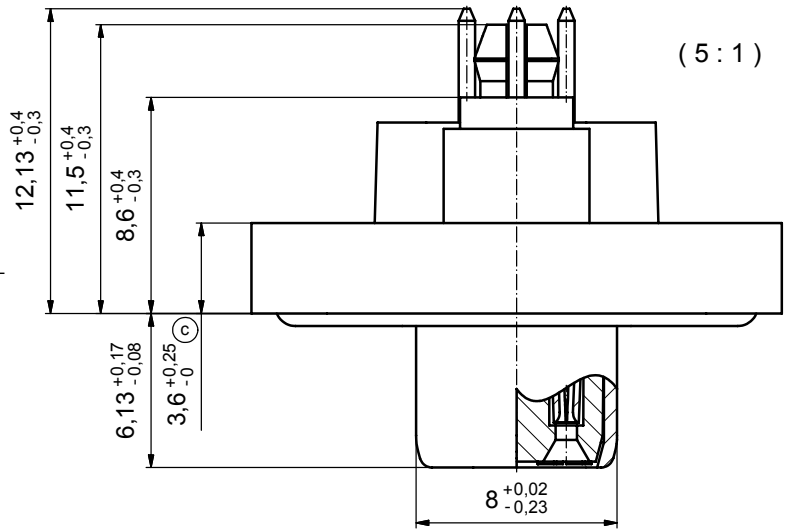


(b) (c)

NOTES:

1. FOR WAVESOLDERING (SOLDER BATH TEMPERATURE 265°C FOR 8 SEC. AND SOLDER PREHEAT 150°C FOR 180 SEC.)
2. IP RATING: IP 67
3. SEALED TO WITHSTAND PRESSURE UP TO 1,45 PSI FOR 30 MINUTES AFTER HIGH TEMPERATURE EXPOSURE
4. METAL SHELL: ZINC DIE CAST; min. 50µm NICKEL PLATING over COPPER
5. INSULATORS: PBT GF UL 94 V-0, BLACK
6. O-RING: SILICONE PER ASTM D2000 70 SHORE A
7. SEALING COMPOUND: EPOXY RESIN UL 94 V-0; BLACK
8. CONTACTS: COPPER ALLOY PLATING (SEE PART NO):
 PLEASE ADD 1 for 30µm HARD GOLD over min. 50µm NICKEL
 PLEASE ADD 3 for 8µm HARD GOLD over min. 50µm NICKEL
9. REAR SPACER CLIPS: COPPER ALLOY; min. 200µm TIN over 80µm NICKEL
PCB-HOLE: $\varnothing 3,1 \pm 0,1$; PCB THICKNESS 1,6mm
10. HEXLOCKING SCREWS: STAINLESS STEEL
11. PCB-HOLE DRILLINGS and RECOMMENDED PANEL CUT-OUT ON SHEET 2
12. RECOMMENDED TORQUE FOR MOUNTING SCREW 35Ncm (3.1 in.LB) / max.67Ncm (6 in.LB)
13. CONNECTOR IS PART MARKED: 15-00054 CONEC ABC



(c)

AT ALL TIMES WATER RESISTANT CONNECTORS NOT IN USE SHOULD BE COVERED WITH A CONEC WATER RESISTANT CAP OR WATER TIGHT HOOD.

Directive 2002/95/EC
RoHS
Compliant

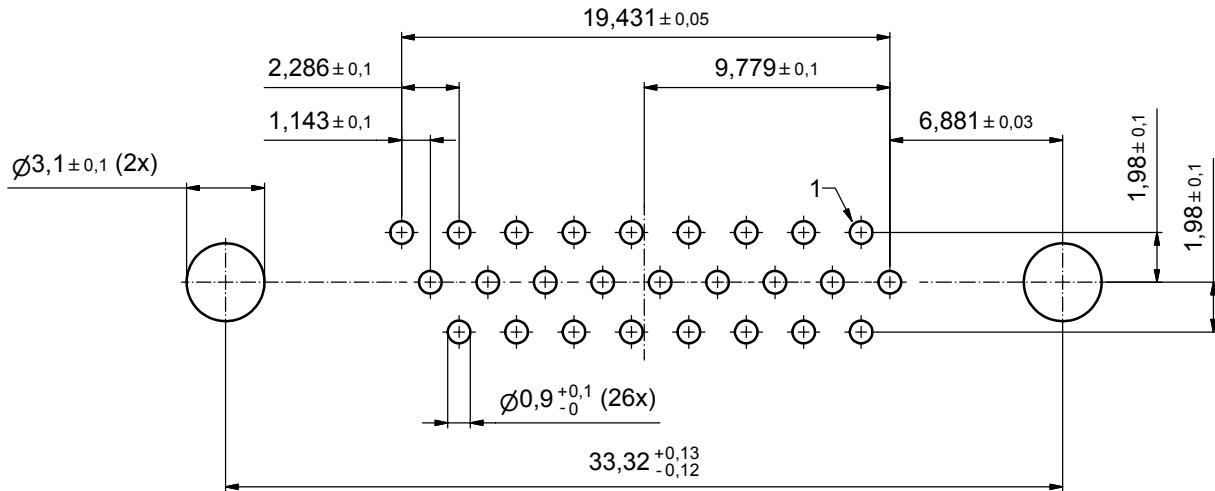
| | |
|---|--------|
| APPROVAL # FREIGABE # DEBLOCAGE # AUTORIZACION # APPROVAL | |
| CUSTOMER APPROVAL DATE: | |
| NAME: | TITLE: |
| COMPANY NAME: | |
| APPROVAL # FREIGABE # DEBLOCAGE # AUTORIZACION # APPROVAL | |

| | | | |
|---|-------------|----------|------|
| THIS DRAWING MAY NOT BE COPIED OR REPRODUCED IN ANY WAY, AND MAY NOT BE PASSED ON TO A THIRD PARTY WITHOUT WRITTEN PERMISSION. OWNERSHIP AND COPYRIGHT OF CONEC GmbH DO NOT ALTER CAD DRAWING BY HAND | | | |
| 5 x c | Ä 3435 | 25.09.09 | HS |
| 3 x b | Ä 3129 | 26.09.08 | HS |
| a | Origin | | |
| rev. | description | date | name |

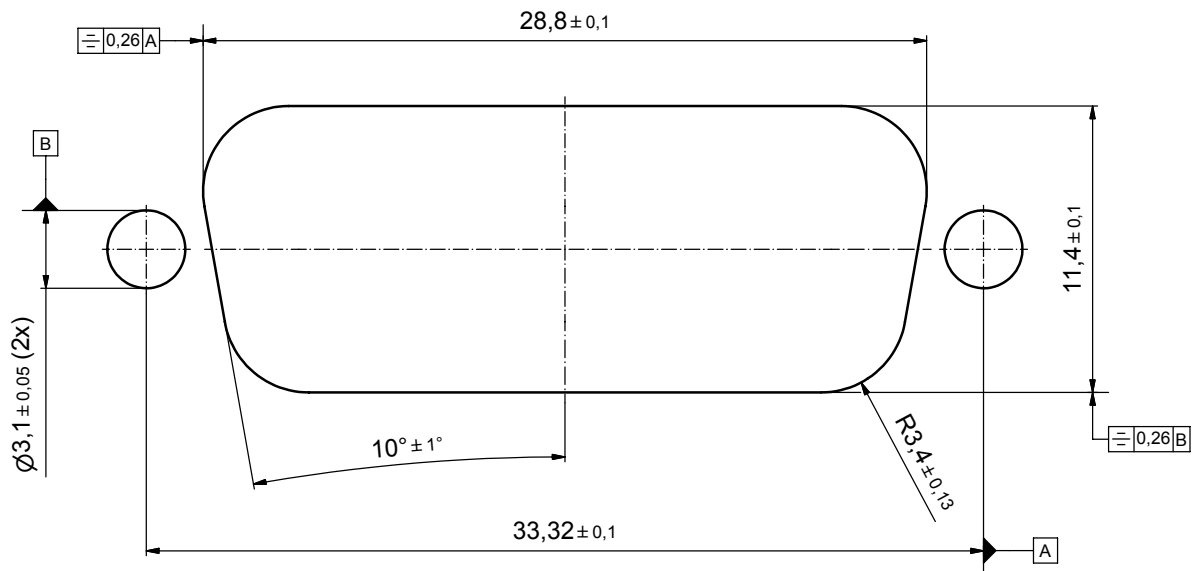
| | | | |
|----------------|---------|--|--------|
| tolerance | | dim. in mm | |
| date | name | scale: 2:1 (5:1) | |
| drawn 09.09.08 | Schmidt | material: see notes | |
| appd. 15.09.08 | Fischer | title: D-SUB FEMALE HD | |
| norm | | 26pos. SOLDER PIN STRAIGHT | |
| d-old | | with rear spacer clip and hexlocking screw | |
| CONEC® | | dwg no: Inventor 10 | DIN-A3 |
| | | sh: 1 | |
| | | part no: 15-00054 (see note 8) | (b) |

| | |
|--|--------|
| scale: 2:1 (5:1) | |
| material: see notes | |
| title: D-SUB FEMALE HD | |
| 26pos. SOLDER PIN STRAIGHT | |
| with rear spacer clip and hexlocking screw | |
| dwg no: Inventor 10 | DIN-A3 |
| sh: 1 | |
| part no: 15-00054 (see note 8) | |

P.C.B. HOLE DRILLINGS



RECOMMENDED PANEL CUT-OUT (b)



| | |
|---|--------|
| APPROVAL # FREIGABE # DEBLOCAGE # AUTORIZACION # APPROVAL | |
| CUSTOMER APPROVAL DATE: | |
| NAME: | TITLE: |
| COMPANY NAME: | |
| APPROVAL # FREIGABE # DEBLOCAGE # AUTORIZACION # APPROVAL | |

| | | | |
|---|-------------|----------|------|
| THIS DRAWING MAY NOT BE COPIED OR REPRODUCED IN ANY WAY, AND MAY NOT BE PASSED ON TO A THIRD PARTY WITHOUT WRITTEN PERMISSION. OWNERSHIP AND COPYRIGHT OF CONEC GmbH. | | | |
| DO NOT ALTER CAD DRAWING BY HAND | | | |
| 1 x b | Ä 3129 | 26.09.08 | HS |
| a | Origin | | |
| rev. | description | date | name |

| | | | |
|----------------|---------|--|--------|
| tolerance | | dim. in mm | |
| date | name | scale: 5:1 | |
| drawn 09.09.08 | Schmidt | material: see sheet 1 | |
| appd. 15.09.08 | Fischer | title: P.C.B. HOLE DRILLINGS | |
| norm | | PANEL CUT-OUT | |
| d-old | | D-SUB Female 26pos. HD Solder pin straight | |
| CONEC® | | dwg no: Inventor 10 | DIN-A3 |
| | | 15K1A267 | sh: 2 |
| | | part no: see sheet 1 | |

| | |
|--|--------|
| scale: 5:1 | |
| material: see sheet 1 | |
| title: P.C.B. HOLE DRILLINGS | |
| PANEL CUT-OUT | |
| D-SUB Female 26pos. HD Solder pin straight | |
| dwg no: Inventor 10 | DIN-A3 |
| 15K1A267 | sh: 2 |
| part no: see sheet 1 | |