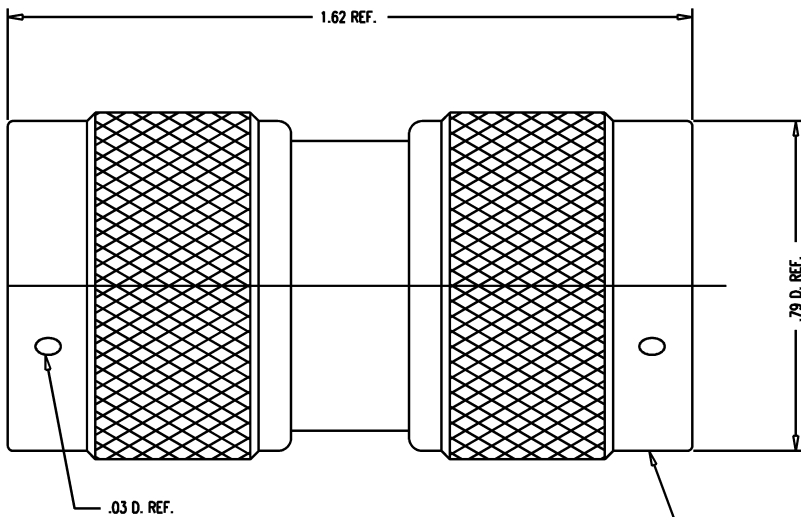


DASH NO.	M CODE	MADE FROM
----------	--------	-----------



STAMP: 91836 M55339/05-00057
 1209-9 XXXX
 DATE CODE

- NOTES:
1. INTERFACE PER MIL-STD-348, FIG. 304-1
 2. MATERIALS:
 GASKETS: SILICONE RUBBER PER ZZ-R-765
 C-RINGS & OUTER CONTACT: BRONZE, ASTM-B-103
 INSULATORS: TEFLON, ASTM-D-4894
 ALL OTHER METAL PARTS: BRASS, ASTM-B16
 3. FINISHES:
 CONTACT PIN: GOLD PLATE MIL-G-45204B
 ALL OTHER METAL PARTS: SILVER PLATE QQ-S-365
 4. ELECTRICAL CHARACTERISTICS:
 NOMINAL IMPEDANCE: 50 OHMS
 FREQUENCY RANGE: 0 TO 11 GHz
 VOLTAGE RATING: 1000 VOLTS RMS

GSD

GSD

M55339/05-00057

REVISIONS	
ISSUE	CHANGES
8	CN 37215 A REDRAWN PG 12/06/96

SCALE 4:1	
APPROX SURFACE AREA	
1209-9	
USED ON	
REF:	
ADAPTER, N, M-M	
DRAWN PG	2/96/96
DESIGN LJ	12/06/96
APPR.	DATE
KINGS ELECTRONICS CO., INC. TUCKAHOE, NEW YORK 10707	
M55339/05-00057	

UNLESS OTHERWISE SPECIFIED	2. REMOVE ALL BURRS, BREAK SHARP EDGES .005 MAX.	7. ALL LEAD THREADS TO BE CHAMFERED 45- TO ROOT DIAMETER. #CRITICAL DIMENSIONS
1. TOLERANCES: FRACTIONS & 2 PLACE DECIMALS \pm .010	3. NO FILLETS PERMITTED.	
3 PLACE DECIMALS \pm .004 ANGLES \pm 0-30'	4. SURFACE ROUGHNESS 63 MICRONS RMS MAX.	
CONCENTRICITY OF ANY 2 DIAMETERS MAY NOT EXCEED HALF THE SUM OF THEIR TOLERANCES.	5. ALL DIMENSIONS PRIOR TO PLATING.	
	6. ALL PLATING IN ACCORDANCE WITH KER 10004.	