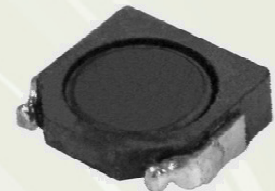


SMD Power Inductor CDRH26D11



■ Features

- ◎ Small size inductor: 3.1 × 2.8mm Max. (L × W) and 1.2mm Max height.
- ◎ Operating temperature range: -40°C~+105°C.
- ◎ Magnetically shielded.
- ◎ RoHS and Halogen-Free Compliance.

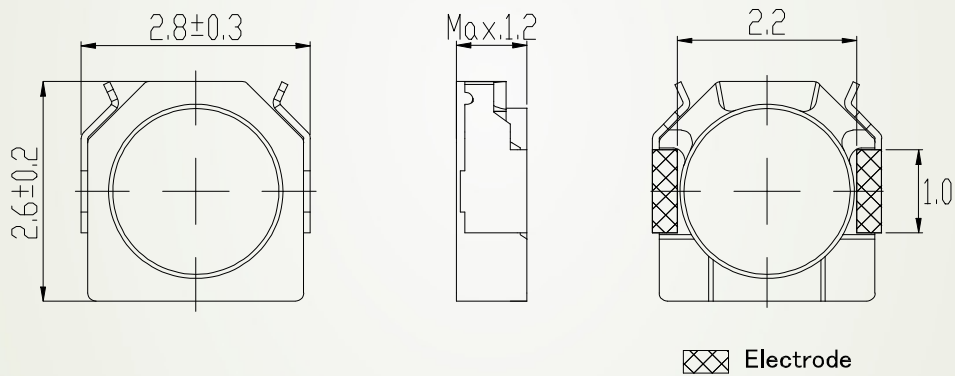


■ Applications

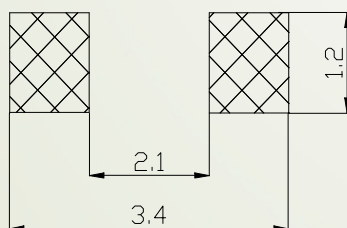
Low profile, surface mount inductor for MP3/MP4, mobile phone, DSC/DVC, and other portable devices.

■ Shapes and Dimensions/Recommended Land Patterns(mm)

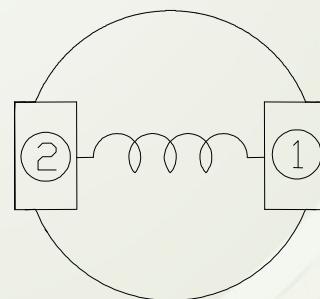
◆ Dimensions



◆ Land pattern



◆ Schematics (Bottom)



SMD Power Inductor CDRH26D11



■Electrical Characteristics specification.

| Part No. | Stamp | Inductance 100kHz (μ H) | D.C.R.(m Ω) [Max.](Typ.) (20°C) | Saturation Current (A) ※1 | | Temperature Rise Current (A) ※2 |
|-------------------|-------|------------------------------------|---|------------------------------|------------|---------------------------------------|
| | | | | (at 20°C) | (at 105°C) | |
| CDRH26D11NP-1R0NC | A | 1.0 \pm 30% | 67.5(54.0) | 1.30 | 1.05 | 1.70 |
| CDRH26D11NP-1R5PC | B | 1.5 \pm 25% | 77.5(62.0) | 1.20 | 0.98 | 1.60 |
| CDRH26D11NP-2R2PC | C | 2.2 \pm 25% | 111(81.1) | 0.98 | 0.85 | 1.25 |
| CDRH26D11NP-2R7PC | D | 2.7 \pm 25% | 122(97.7) | 0.88 | 0.74 | 1.15 |
| CDRH26D11NP-3R3PC | E | 3.3 \pm 25% | 135(108) | 0.75 | 0.65 | 1.05 |
| CDRH26D11NP-4R7PC | F | 4.7 \pm 25% | 225(180) | 0.64 | 0.52 | 0.80 |
| CDRH26D11NP-5R6PC | G | 5.6 \pm 25% | 261(209) | 0.59 | 0.50 | 0.75 |
| CDRH26D11NP-6R8PC | H | 6.8 \pm 25% | 280(224) | 0.56 | 0.45 | 0.70 |
| CDRH26D11NP-8R2PC | I | 8.2 \pm 25% | 386(309) | 0.47 | 0.40 | 0.60 |
| CDRH26D11NP-100PC | J | 10 \pm 25% | 431(345) | 0.44 | 0.38 | 0.52 |
| CDRH26D11NP-120PC | K | 12 \pm 25% | 601(481) | 0.39 | 0.33 | 0.43 |
| CDRH26D11NP-150PC | L | 15 \pm 25% | 694(555) | 0.36 | 0.31 | 0.40 |

※1 Saturation Current: The DC current at which the inductance decreases to 70% of its nominal value.

※2 Temperature Rise Current: The DC current at which the temperature rise is $\Delta t=40^{\circ}\text{C}$ ($T_a=20^{\circ}\text{C}$).

For More Information

Hong Kong

Tel.+852-2880-6688
FAX.+852-2565-9600

Shanghai

Tel.+86-021-58363299
FAX.+86-021-58363266

Shenzhen

Tel.+86-755-82910228
FAX.+86-755-82910338

Taipei

Tel.+886-2-27065228
FAX.+886-2-27065229

Tokyo

Tel.+81-3-5202-7112
FAX.+81-3-5202-7105

Seoul

Tel.+82-2-6237-0777
FAX.+82-2-6237-0778

Singapore

Tel.+65-6296-3388
FAX.+65-6296-3390

Malaysia

Tel.+60-3-8733-0900
FAX.+60-3-8737-7384

Chicago

Tel.+1-847-545-6700
FAX.+1-847-545-6720

California

Tel.+1-408-321-9660
FAX.+1-408-321-9308

