

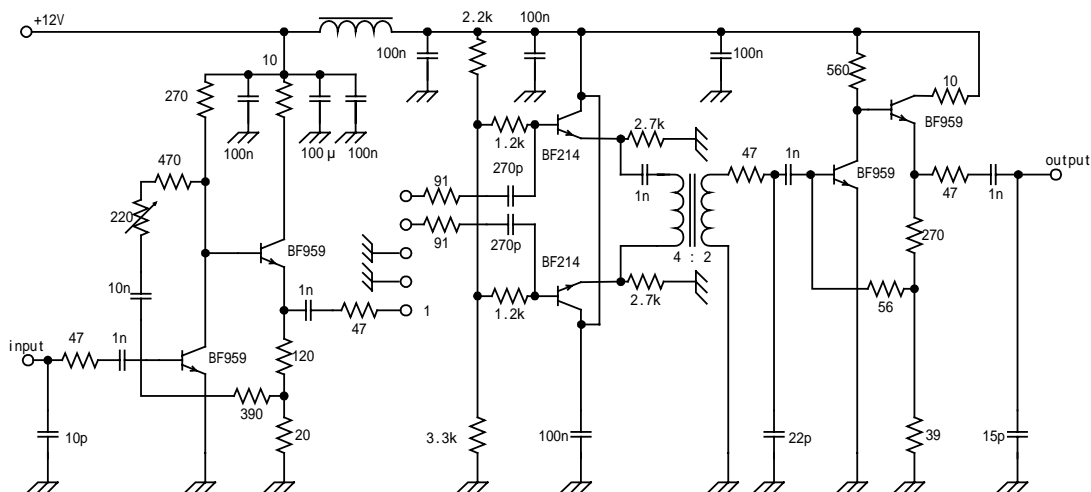
Customer Name	Standard specification		
Application	IF Filter for Digital Terrestrial TV (Switchable)	FUJITSU MEDIA DEVICES LIMITED	
Picture Carrier Frequency	36.00MHz	DATE	July 07, 2005
FMD Part Number	FAR-K4SH-36M000-L0E1	Version	2.1

Table 1-2 Electrical Specification (Ta=25°C)

Channel 2 (BW=7.4MHz)		Pin No.1=INPUT		Pin No.2&3=GROUND		
Items	Conditions	Specification			Unit	Remarks
		Min.	Typ.	Max.		
Insertion Loss	36.00 MHz	18.4	19.9	21.4	dB	
Pass bandwidth	relative attenuation<1.5dB	-	6.72	-	MHz	
	relative attenuation<3.0dB	-	7.17	-	MHz	
	relative attenuation<15dB	-	8.35	-	MHz	
	relative attenuation<30dB	-	9.01	-	MHz	
Relative attenuation	30.75MHz	36	51	-	dB	
	40.25MHz	12.5	17	-	dB	
	40.75MHz	29	42	-	dB	
	41.00MHz	31	45	-	dB	
	41.25MHz	33	44	-	dB	
	25~30.75MHz	36	38	-	dB	
	41.25~45MHz	32	35	-	dB	
Group delay ripple	32.4~39.6MHz	-	56	-	nsp-p	
Impedance at 36MHz	Input kohms//pF	-	1.5//20.8	-		
	Output kohms//pF	-	2.3//5.3	-		
Temperature coefficient		---	-72	---	ppm/°C	

MEASURING CIRCUIT

Characteristics of Channel 2 (switching pin 2 connected to ground)



Customer Name	Standard specification	FUJITSU MEDIA DEVICES LIMITED	
Application	IF Filter for Digital Terrestrial TV (Switchable)		
Picture Carrier Frequency	36.00MHz	DATE	July 07, 2005
FMD Part Number	FAR-K4SH-36M000-L0E1	Version	2.1

● **Dimensions**

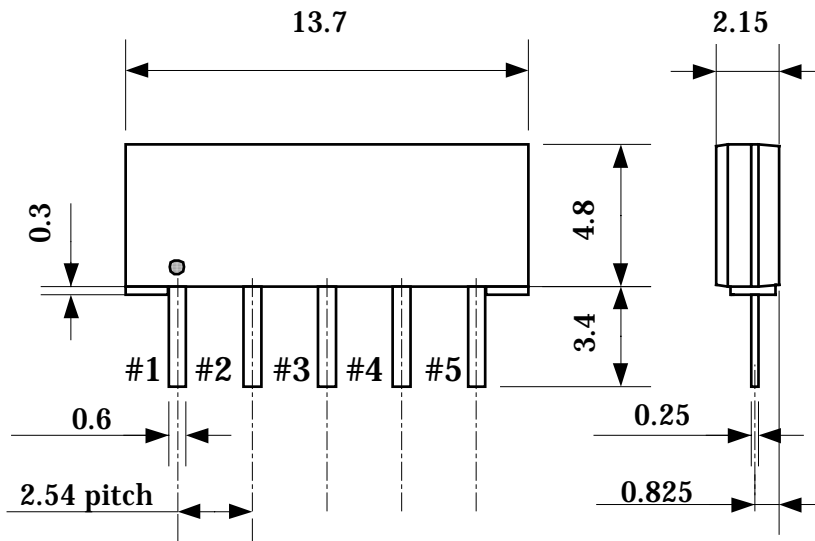


Fig.1

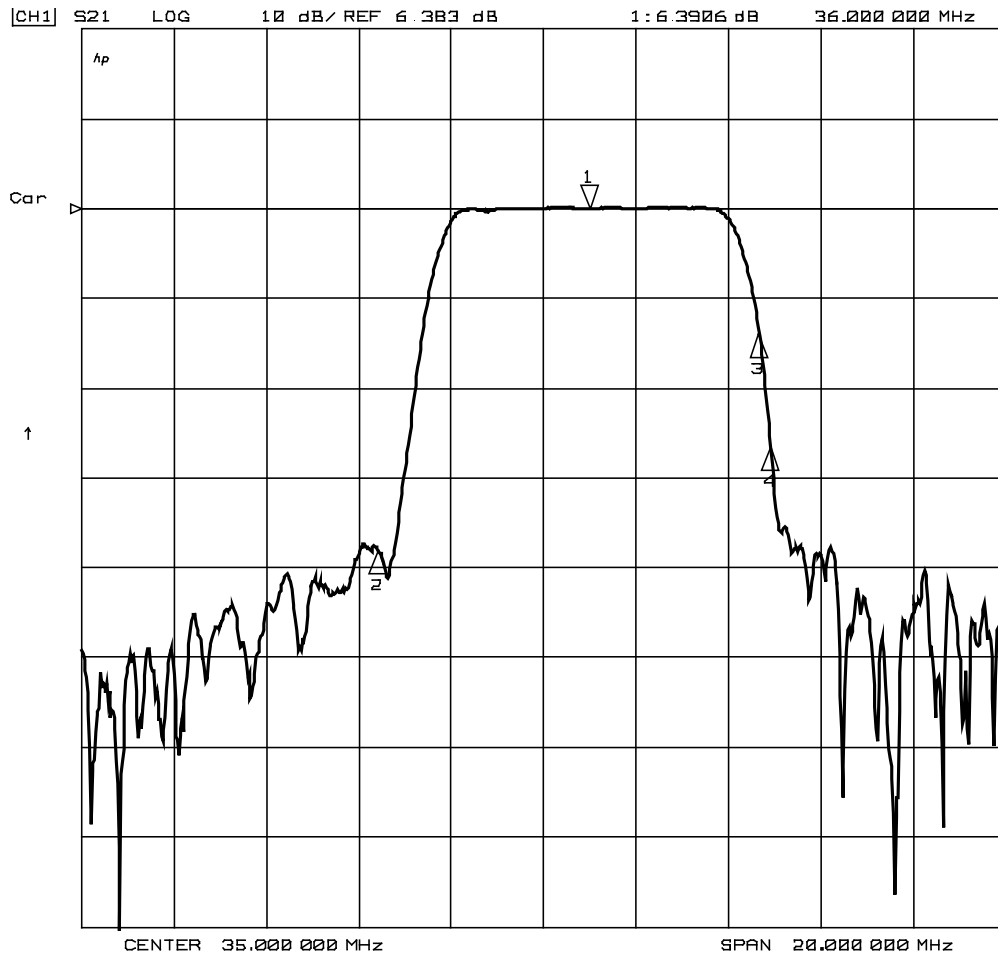
● **Pin Configuration**

Table 2

Pin No.	Symbol	Function
#1	IN	Input
#2	SW	Switching
#3	GND	Ground
#4	OUT	Output
#5	OUT	Output

Customer Name	Standard specification		FUJITSU MEDIA DEVICES LIMITED	
Application	IF Filter for Digital Terrestrial TV (Switchable)			
Picture Carrier Frequency	36.00MHz	DATE	July 07, 2005	
FMD Part Number	FAR-K4SH-36M000-L0E1	Version	2.1	

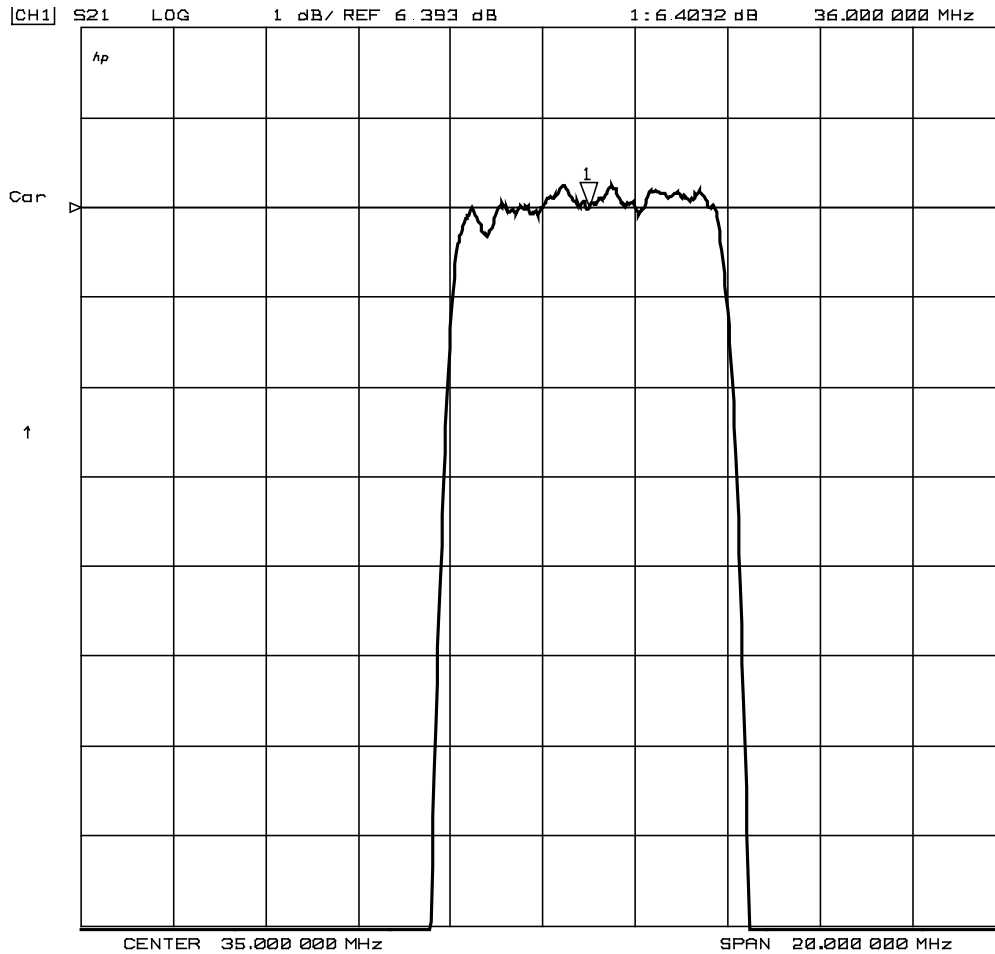
Amplitude Response [Channel1-BW=6.4MHz] (10dB/div)



Marker1 : 36.00 MHz
Marker2 : 31.42 MHz
Marker3 : 39.67 MHz
Marker4 : 39.92 MHz

Customer Name	Standard specification	FUJITSU MEDIA DEVICES LIMITED	
Application	IF Filter for Digital Terrestrial TV (Switchable)		
Picture Carrier Frequency	36.00MHz	DATE	July 07, 2005
FMD Part Number	FAR-K4SH-36M000-L0E1	Version	2.1

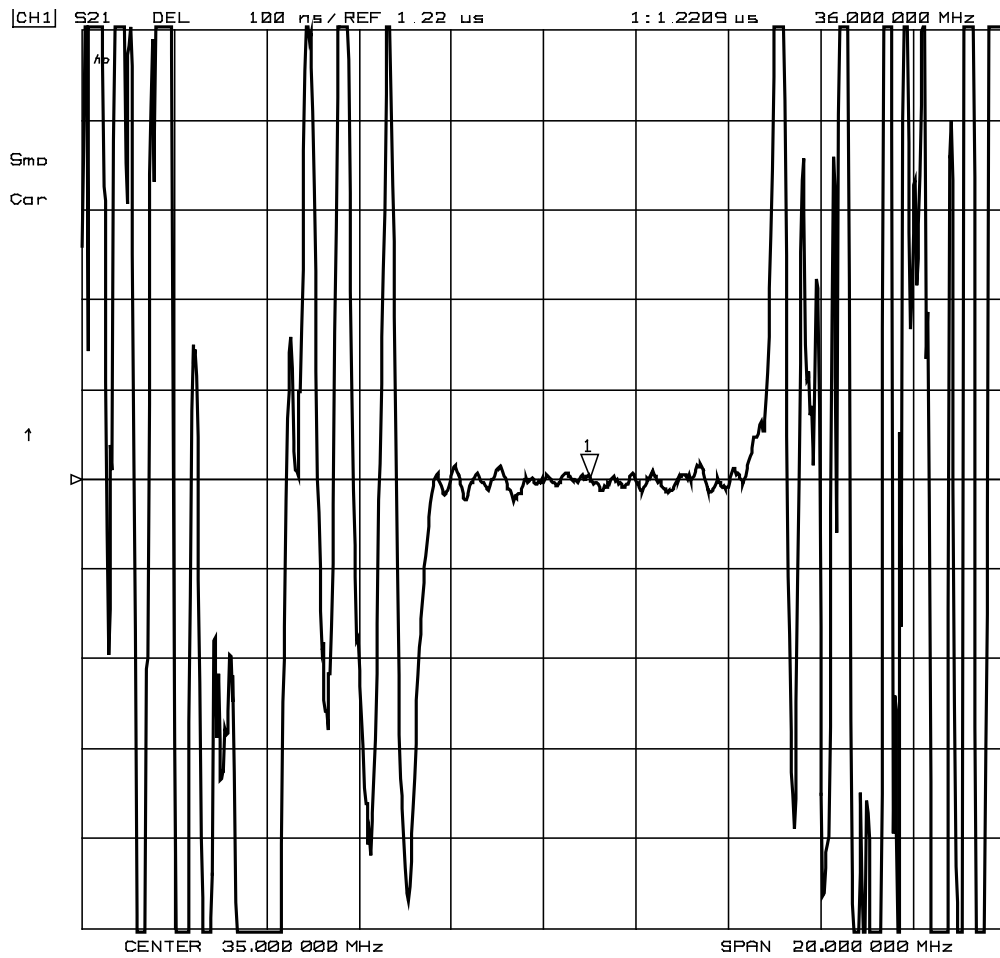
Amplitude Response [Channel1-BW=6.4MHz] (1dB/div)



Marker1 : 36.00 MHz

Customer Name	Standard specification	FUJITSU MEDIA DEVICES LIMITED	
Application	IF Filter for Digital Terrestrial TV (Switchable)		
Picture Carrier Frequency	36.00MHz	DATE	July 07, 2005
FMD Part Number	FAR-K4SH-36M000-L0E1	Version	2.1

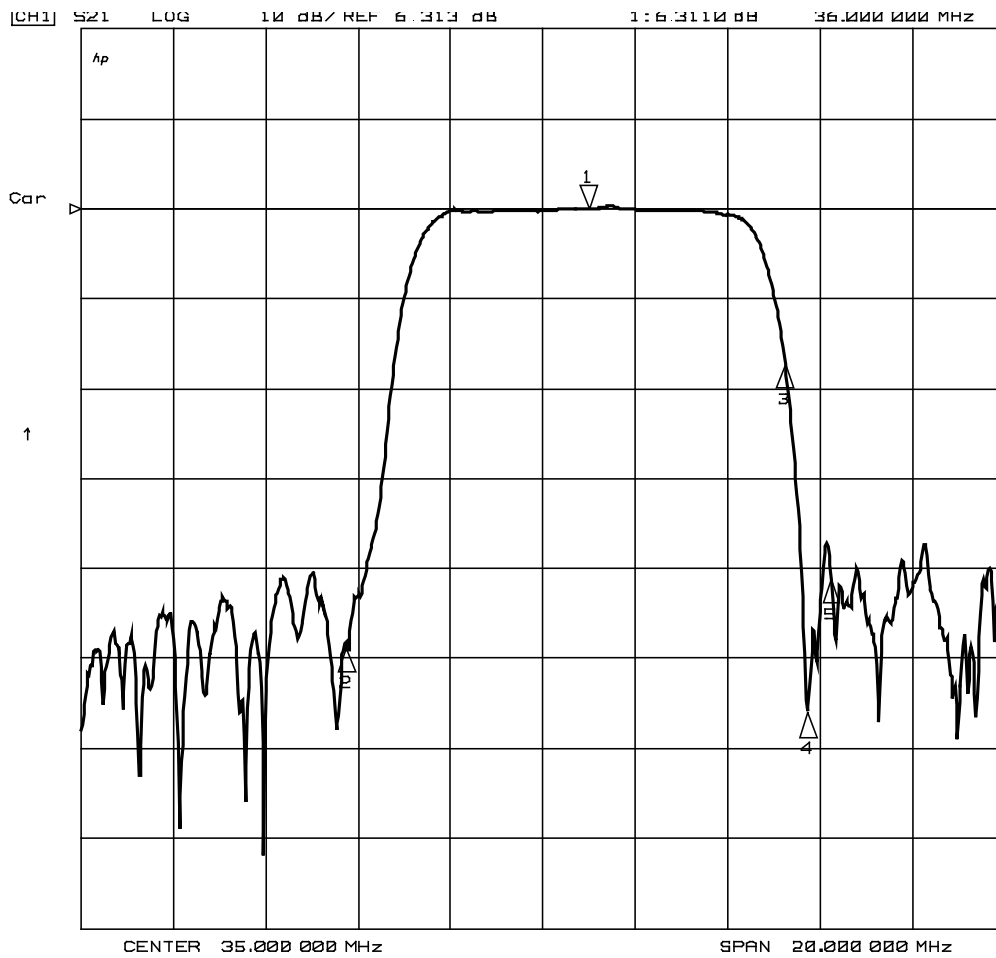
Group Delay [Channel1-BW=6.4MHz] (100ns/div)
 Delay Aper.=250kHz



Marker1 : 36.00 MHz

Customer Name	Standard specification	FUJITSU MEDIA DEVICES LIMITED	
Application	IF Filter for Digital Terrestrial TV (Switchable)		
Picture Carrier Frequency	36.00MHz	DATE	July 07, 2005
FMD Part Number	FAR-K4SH-36M000-L0E1	Version	2.1

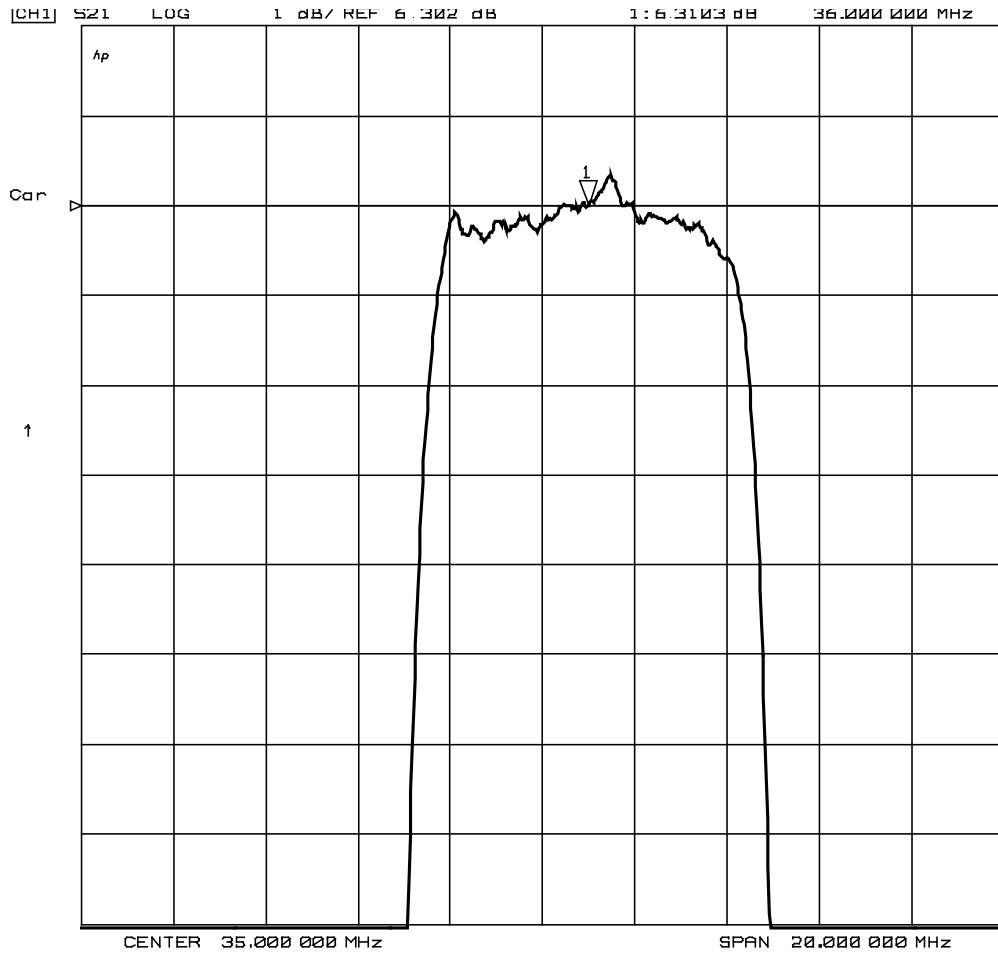
Amplitude Response [Channel2-BW=7.4MHz] (10dB/div)



- Marker1 : 36.00 MHz
- Marker2 : 30.75 MHz
- Marker3 : 40.25 MHz
- Marker4 : 40.75 MHz
- Marker5 : 41.25 MHz

Customer Name	Standard specification	FUJITSU MEDIA DEVICES LIMITED	
Application	IF Filter for Digital Terrestrial TV (Switchable)		
Picture Carrier Frequency	36.00MHz	DATE	July 07, 2005
FMD Part Number	FAR-K4SH-36M000-L0E1	Version	2.1

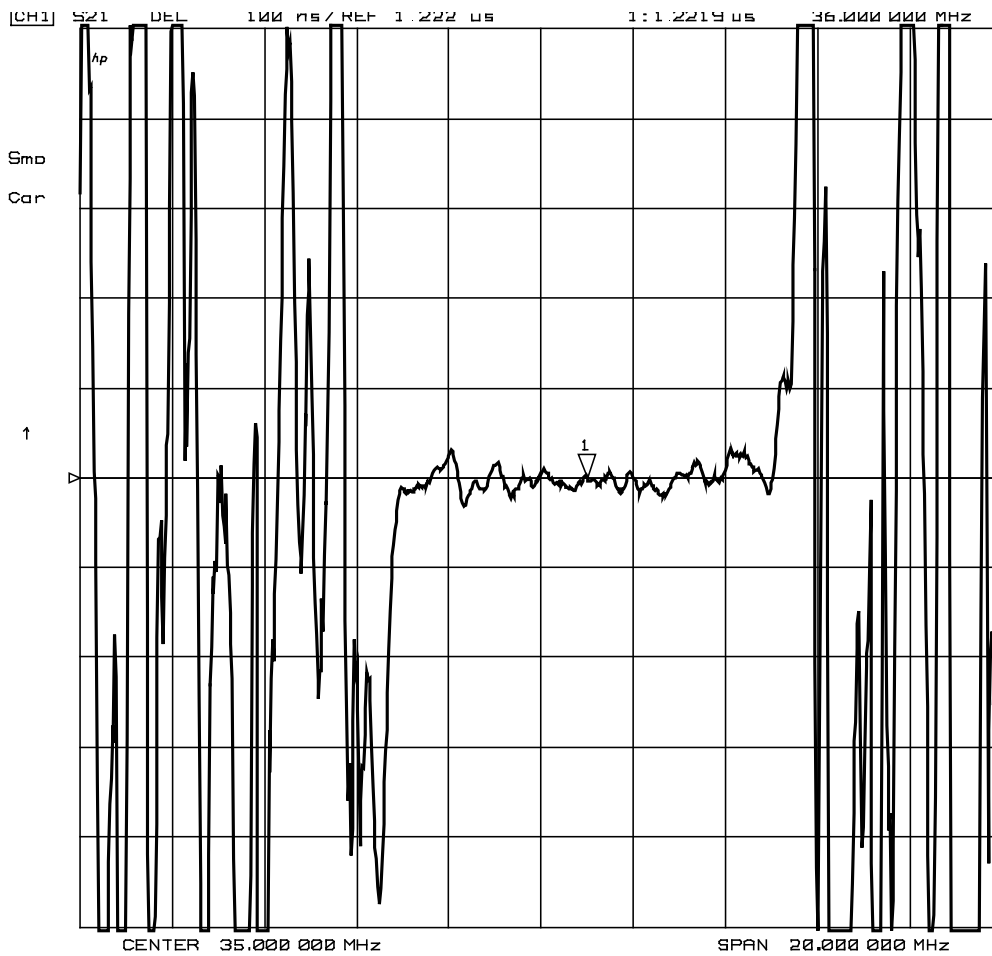
Amplitude Response [Channel2-BW=7.4MHz] (1dB/div)



Marker1 : 36.00 MHz

Customer Name	Standard specification	FUJITSU MEDIA DEVICES LIMITED	
Application	IF Filter for Digital Terrestrial TV (Switchable)		
Picture Carrier Frequency	36.00MHz	DATE	July 07, 2005
FMD Part Number	FAR-K4SH-36M000-L0E1	Version	2.1

Group Delay [Channel2-BW=7.4MHz] (100ns/div)
 Delay Aper. = 250kHz



Marker1 : 36.00 MHz