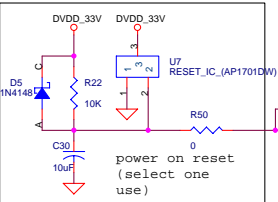


J7 on is P2 force link mode (100mbus FULL mode)
 J8 on is P2 fix mode (100Mbps mode)
 J9, J10 on is P2 use Reverse-MII mode
 J11 on is P2 use RMI mode
 J5 on is use EEPROM



Disable Port 2 MDIO pull Low, TXB2 float (J7 off).
 Enable port 2, please remove MDIO pull Low resistor (R31)

Title			DM8203E_EVB circuit for DM8203-E5
Size	Document Number	DM8203E EVB	
Date:	Tuesday, August 26, 2008	Sheet	1 of 1