

PLEASE CHECK WWW.MOLEX.COM FOR LATEST PART INFORMATION

Part Number: [0192700048](#)
Status: **Active**
Overview: [permafit](#)
Description: Perma-Fit™ Heavy Wall Battery Cable Tubing, 50.80mm (2.000") Inside Diameter (As Supplied), Black, 1.22m (4.0') Length

Documents:

[Drawing \(PDF\)](#) [RoHS Certificate of Compliance \(PDF\)](#)

General

Product Family	Heat Shrink Tubing
Series	19270
Comments	25 per bag
Overview	permafit
Product Name	Perma-Fit™

Physical

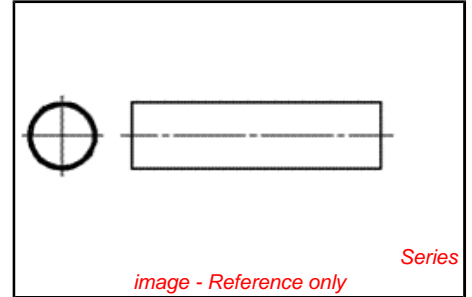
Packaging Type	Bag
Temperature Range - Operating	-55°C to +110°C

Material Info

Old Part Number	PFB-20-1BK
-----------------	------------

Reference - Drawing Numbers

Sales Drawing	SD-19270-001
---------------	--------------

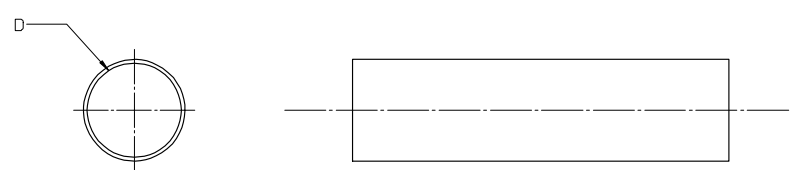


<p>EU RoHS ELV and RoHS Compliant REACH SVHC Not Reviewed Halogen-Free Status Not Reviewed</p>	<p>China RoHS</p> 
<p>Need more information on product environmental compliance?</p> <p>Email productcompliance@molex.com For a multiple part number RoHS Certificate of Compliance, click here</p> <p>Please visit the Contact Us section for any non-product compliance questions.</p>	

Search Parts in this Series
[19270Series](#)

PLEASE CHECK WWW.MOLEX.COM FOR LATEST PART INFORMATION

BLACK		RED		MIN	MAX	RECOVERED	LENGTH
MATERIAL NUMBER	ENGINEERING NUMBER	MATERIAL NUMBER	ENGINEERING NUMBER	EXPANDED ID 'D'	RECOVERED ID	WALL THK REF	FEET/METERS
192700008	PFB-04-1BK	192700013	PFB-04-1RD	.400/10.16	.150/3.81	.060/1.53	4.0/1.2
192700018	PFB-07-1BK	192700023	PFB-07-1RD	.750/19.05	.220/5.59	.095/2.41	
192700028	PFB-11-1BK	192700033	PFB-11-1RD	1.100/27.94	.375/9.53	.120/3.05	
192700038	PFB-15-1BK	192700043	PFB-15-1RD	1.500/38.10	.500/19.05	.140/3.56	
192700048	PFB-20-1BK	192700053	PFB-20-1RD	2.000/50.380	.750/19.05	.155/3.98	
192700058	PFB-30-1BK	192700063	PFB-30-1RD	3.540/89.92	1.18/29.97	.155/3.98	
192700068	PFB-40-1BK	192700073	PFB-40-1RD	4.72/119.89	1.57/39.88	.170/4.37	



SALES DRAWING

- NOTES:
1. MATERIAL: POLYOLEFIN
 2. OTHER CUT LENGTHS ARE AVAILABLE.

NEW RELEASE EC NO: EITC2005-0060 DRAWN BY: BENDERLE 2004/09/23 CHECKED BY: CHYKAR DEROSS 2004/09/23 APPROVED BY: R DEROSS 2004/09/23	QUALITY SYMBOLS ▽=0 ▽=0	GENERAL TOLERANCES (UNLESS SPECIFIED)		IN/MM	SCALE 1:1	DESIGN UNITS INCH	THIRD ANGLE PROJECTION	
		4 PLACES ± --- ± ---	3 PLACES ± --- ± .010	2 PLACES ± 0.25 ± .02	1 PLACE ± 0.51 ± ---	ANGULAR ± --- °	DRAWN BY: BENDERLE 2004/09/23 CHECKED BY: R DEROSS 2004/09/23 APPROVED BY: R DEROSS 2004/09/23	
		DRAFT WHERE APPLICABLE MUST REMAIN WITHIN DIMENSIONS			SEE CHART		TITLE: PERMA-FIT POLYOLEFIN HEAT SHRINK TUBING 19270 SERIES MOLEX INCORPORATED	
					MATERIAL NO.		DOCUMENT NO. SD-19270-001	SHEET NO. 1 OF 1

lb_frame_B_P_AH_T Rev. D 2004/06/28