

PLEASE CHECK WWW.MOLEX.COM FOR LATEST PART INFORMATION

Part Number: [0192700038](#)
Status: **Active**
Overview: [permafit](#)
Description: Perma-Fit™ Heavy Wall Battery Cable Tubing, 38.10mm (1.500") Inside Diameter (As Supplied), Black, 1.22m (4.0') Length

Documents:

[Drawing \(PDF\)](#) [RoHS Certificate of Compliance \(PDF\)](#)

General

Product Family	Heat Shrink Tubing
Series	19270
Comments	40 per bag
Overview	permafit
Product Name	Perma-Fit™

Physical

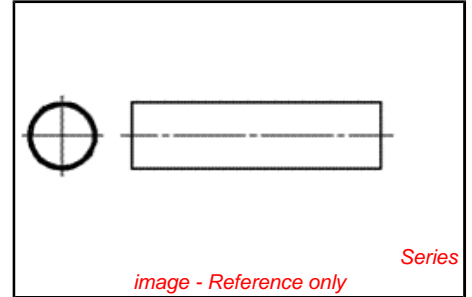
Packaging Type	Bag
Temperature Range - Operating	-55°C to +110°C

Material Info

Old Part Number	PFB-15-1BK
-----------------	------------

Reference - Drawing Numbers

Sales Drawing	SD-19270-001
---------------	--------------



EU RoHS

ELV and RoHS Compliant

REACH SVHC

Not Reviewed

Halogen-Free

Status

Not Reviewed

Need more information on product environmental compliance?

Email productcompliance@molex.com
 For a multiple part number RoHS Certificate of Compliance, [click here](#)

Please visit the [Contact Us](#) section for any non-product compliance questions.

China RoHS

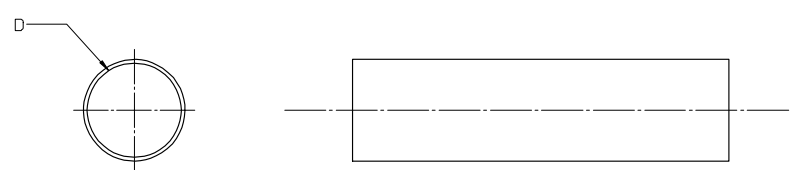


Search Parts in this Series

[19270Series](#)

PLEASE CHECK WWW.MOLEX.COM FOR LATEST PART INFORMATION

BLACK		RED		MIN	MAX	RECOVERED	LENGTH
MATERIAL NUMBER	ENGINEERING NUMBER	MATERIAL NUMBER	ENGINEERING NUMBER	EXPANDED ID 'D'	RECOVERED ID	WALL THK REF	FEET/METERS
192700008	PFB-04-1BK	192700013	PFB-04-1RD	.400/10.16	.150/3.81	.060/1.53	4.0/1.2
192700018	PFB-07-1BK	192700023	PFB-07-1RD	.750/19.05	.220/5.59	.095/2.41	
192700028	PFB-11-1BK	192700033	PFB-11-1RD	1.100/27.94	.375/9.53	.120/3.05	
192700038	PFB-15-1BK	192700043	PFB-15-1RD	1.500/38.10	.500/19.05	.140/3.56	
192700048	PFB-20-1BK	192700053	PFB-20-1RD	2.000/50.380	.750/19.05	.155/3.98	
192700058	PFB-30-1BK	192700063	PFB-30-1RD	3.540/89.92	1.18/29.97	.155/3.98	
192700068	PFB-40-1BK	192700073	PFB-40-1RD	4.72/119.89	1.57/39.88	.170/4.37	



SALES DRAWING

- NOTES:
- MATERIAL: POLYOLEFIN
 - OTHER CUT LENGTHS ARE AVAILABLE.

NEW RELEASE EC NO: EITC2005-0060 DRAWN BY: BENDERLE 2004/09/23 CHECKED BY: CHYKAR DEROSS 2004/09/23 APPROVED BY: R DEROSS 2004/09/23	QUALITY SYMBOLS ▽=0 ▽=0	GENERAL TOLERANCES (UNLESS SPECIFIED)		DIMENSION STYLE	SCALE	DESIGN UNITS	THIRD ANGLE PROJECTION		
			mm	INCH	IN/MM	1:1	INCH		
		4 PLACES	± .---	± .---	DRAWN BY	DATE	TITLE		
		3 PLACES	± .---	± .010	BENDERLE	2004/09/23	PERMA-FIT POLYOLEFIN HEAT SHRINK TUBING 19270 SERIES		
2 PLACES	± 0.25	± .02	R DEROSS	2004/09/23	MOLEX INCORPORATED				
1 PLACE	± 0.51	± .---	R DEROSS	2004/09/23	MOLEX INCORPORATED				
ANGULAR ± .---		°	MATERIAL NO.		DOCUMENT NO.	SHEET NO.			
DRAFT WHERE APPLICABLE MUST REMAIN WITHIN DIMENSIONS		SEE CHART		SD-19270-001		1 OF 1			
THIS DRAWING CONTAINS INFORMATION THAT IS PROPRIETARY TO MOLEX INCORPORATED AND SHOULD NOT BE USED WITHOUT WRITTEN PERMISSION									

lb_frame_B_P_AH_T
Rev. D 2004/06/28