

20 Watts

AA20C

Total Power: 20 Watts
 Input Voltages: 48V
 No. of Outputs: Single



Electrical Specs

Input

Input range	36 to 75 VDC
Input capacitance	1.6 μ F typ (48 models)
No load input power	150mW max
Efficiency	84% typical (5V)

Output

Voltage tolerance	\pm 1.0%
Overall regulation	\pm 2% max
Noise/ripple	1% (mV P-P)
Short circuit protection	Continuous Power Cycle
Overvoltage protection	Zener Clamp (125% of nom)
Transient response	1 msec typical (50% step load change to within 1%Vo)

Temperature Coefficient \pm 0.02 °C

Switching frequency 400kHz

Isolation

I/O isolation	1500 VDC
Isolation resistance	1 x 10 ⁹ (Ohms)
Isolation capacitance	220pF

Special Features

- 20 W, Single output
- 2:1 Input range
- Unencapsulated package
- 1.6" x 2.0" x 0.38 case
- Replaces AA20B series
- Industry standard package

Environmental

Operating base temperature range:
 -40°C to +105°C (full load, no derating)
 Storage temperature: -55°C to +125°C
 Humidity: 5% to 95% (non-condensing)
 EMI RFI Shielding: Six sided (except 033-M1)
 MTBF: 361,000 hours (MIL HDBK-217)

Safety

UL	UL1950 Recognition
CSA	CSA22.2-950 Recognition
TUV	EN60950 Recognition

AMERICAS

5810 Van Allen Way
 Carlsbad, CA 92008
 Telephone: 760-930-4600
 Facsimile: 760-930-0698

EUROPE

Astec House, Waterfront Business Park
 Merry Hill, Dudley
 West Midlands, DY5 1LX, UK
 Telephone: 44 (1384) 842-211
 Facsimile: 44 (1384) 843-355

ASIA

Units 2111-2116, Level 21
 Tower1, Metroplaza
 223, Hing Fong Road
 Fwai Fong, New Territories
 Hong Kong
 Telephone: 852-2437-9662
 Facsimile: 852-2402-4426



AA20C

Ordering Information

Input Voltage	Output Voltage	Efficiency	Model Number
36-75 V	3.3V @ 6.0 A	79%	AA20C-048L-0335-M1
36-75 V	5.0V @ 4.0 A	84%	AA20C-048L-050S
36-75 V	12V @ 2.0 A	87%	AA20C-048L-120S

NOTES:

Enable Function

"1" = negative logic enable (std, without "1 or 4" = no enable)

"4" = positive logic enable (std, without "1 or 4" = no enable)

Trim Feature

"9" = Trim feature (std, without "9" no Trim)

Pin Assignments

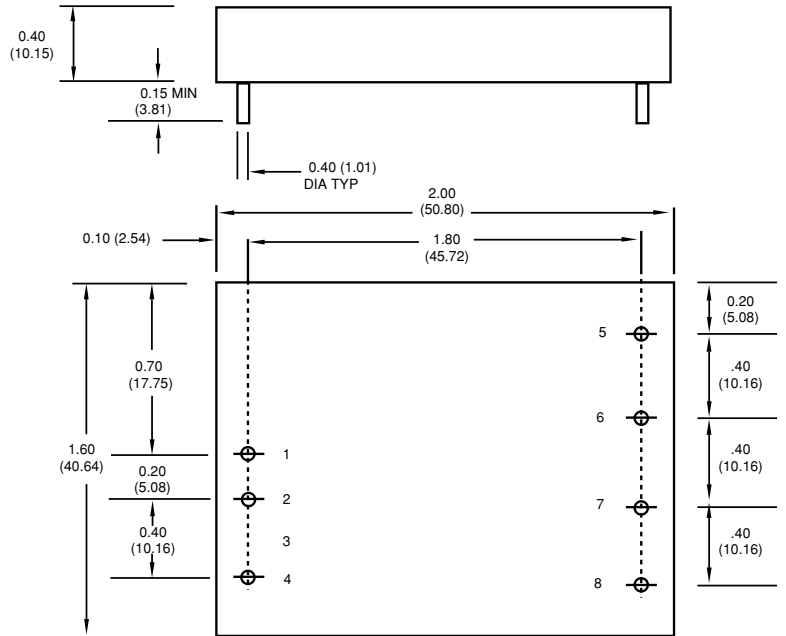
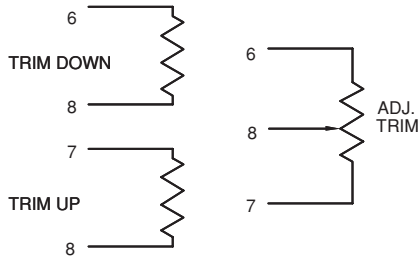
Single Output

1. +Vin
2. -Vin
3. No pin
4. Enable
5. No pin
6. Output 1
7. COM
8. Trim

Note:

Pins 0.040 in Dia x 0.15 in min
 Warranty: 1 yr

SINGLE OUTPUT



BOTTOM VIEW

ALL DIMENSIONS ARE IN INCHES (mm)

Case Material: Metal base/cover
 Weight: 2.0 oz./56 grams.

Astec Industry Standard