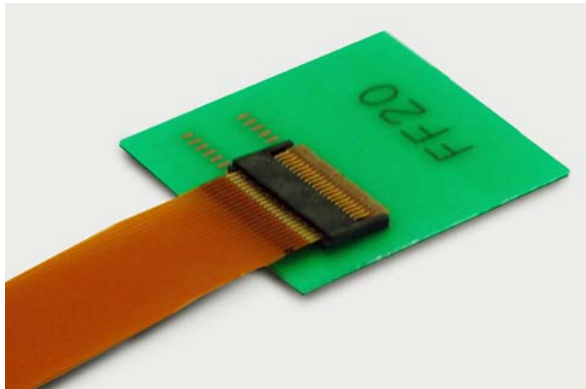


0.3 mm Pitch Ultra Low Profile FPC Back Lock Connector

FF20 Series



OUTLINE

FF20 series is 0.3mm pitch, depth 3.80mm, and 0.66mm connector height. Ultra low profile FPC connector.

FEATURE

- DDK's original rotate oval cam lock mechanism; "Back-lock" system ensure the reliable connection.
- Contact position is upper contact.
- Back-lock structure enables to retain FPC against pulling upward direction.
- Connectors deliver with the lock lever opened. Time saving for FPC inserting operation.

Please do not close a lock lever without inserting FPC.

APPLICATIONS

Mobile Phone, Portable PC, PDA and other Portable Device

SPECIFICATIONS

Rated Voltage	50V AC(r.m.s.)
Rated Current	0.2A / Contact
Dielectric Withstanding Voltage	200V AC (r.m.s.) / 1 minute
Insulation Resistance	50 M Ω (min.) at 250V DC
Contact Resistance	50m Ω (max.)

MATERIAL//FINISH



Item	Material / Finish
Contact	Copper Alloy / Au(Flash) over Ni Plating
Housing	LCP Resin (UL94V-0) / Black
Lock Lever	PPS Resin (UL94V-0) / Brown

© Specifications and/or dimensions in this catalogue are subject to change without notice.
Your catalogue checking the latest specifications with our drawings would be highly appreciated.

090703

<http://www.ddknet.co.jp>

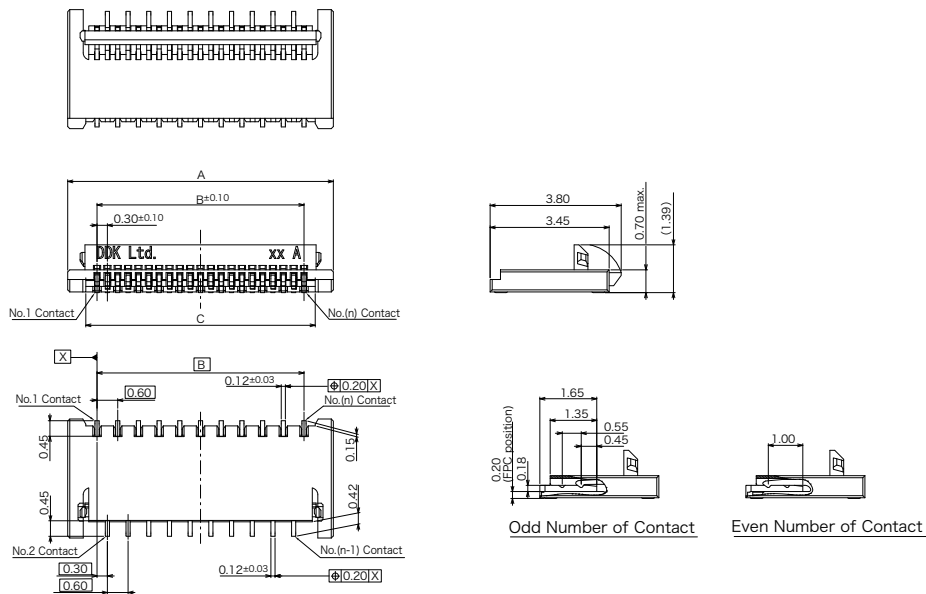
Ultra Low Profile Back Lock Connector

Part Number **FF20-** **A-R11A**

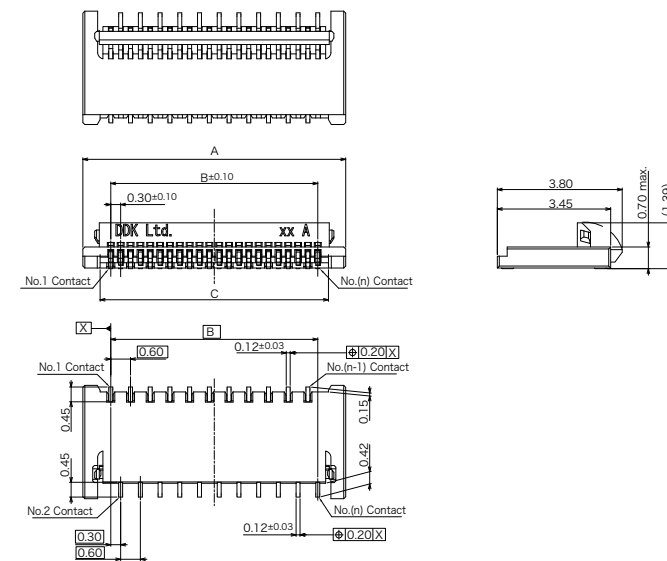
①
②
③
④
⑤
⑥
⑦

① Series	FF20
② Number of Contact	Please refer to table-1
③ Contact Position	A : Upper Contact
④ Contact Style	R : Right Angle
⑤ Contact Tail Length	l : 0.45mm
⑥ Contact Plating	1 : Au (Flash) over Ni Plating
⑦ Lock Lever Style	A : Standard

Odd Number of Contact

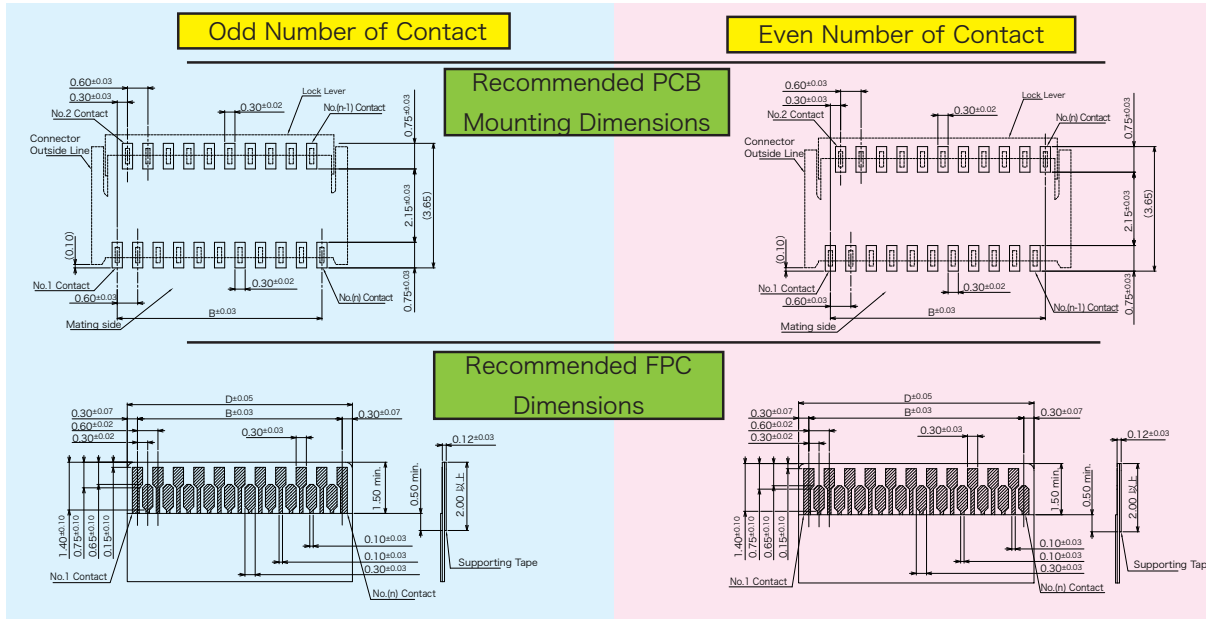


Even Number of Contact



© Specifications and/or dimensions in this catalogue are subject to change without notice.
 Your catalogue checking the latest specifications with our drawings would be highly appreciated.

Ultra Low Profile Back Lock Connector


Table-1

* Regarding the number of contact, please contact our sales.

Part Number	Number of Contact	A	B	C	D
FF20-8A-R11A	8	3.80	2.10	2.75	2.70
FF20-9A-R11A	9	4.10	2.40	3.05	3.00
FF20-10A-R11A	10	4.40	2.70	3.35	3.30
FF20-11A-R11A	11	4.70	3.00	3.65	3.60
FF20-12A-R11A	12	5.00	3.30	3.95	3.90
FF20-13A-R11A	13	5.30	3.60	4.25	4.20
FF20-14A-R11A	14	5.60	3.90	4.55	4.50
FF20-15A-R11A	15	5.90	4.20	4.85	4.80
FF20-16A-R11A	16	6.20	4.50	5.15	5.10
FF20-17A-R11A	17	6.50	4.80	5.45	5.40
FF20-18A-R11A	18	6.80	5.10	5.75	5.70
FF20-19A-R11A	19	7.10	5.40	6.05	6.00
FF20-20A-R11A	20	7.40	5.70	6.35	6.30
FF20-21A-R11A	21	7.70	6.00	6.65	6.60
FF20-22A-R11A	22	8.00	6.30	6.95	6.90
FF20-23A-R11A	23	8.30	6.60	7.25	7.20
FF20-24A-R11A	24	8.60	6.90	7.55	7.50
FF20-25A-R11A	25	8.90	7.20	7.85	7.80
FF20-26A-R11A	26	9.20	7.50	8.15	8.10
FF20-27A-R11A	27	9.50	7.80	8.45	8.40
FF20-28A-R11A	28	9.80	8.10	8.75	8.70
FF20-29A-R11A	29	10.10	8.40	9.05	9.00
FF20-30A-R11A	30	10.40	8.70	9.35	9.30
FF20-31A-R11A	31	10.70	9.00	9.65	9.60
FF20-32A-R11A	32	11.00	9.30	9.95	9.90
FF20-33A-R11A	33	11.30	9.60	10.25	10.20
FF20-34A-R11A	34	11.60	9.90	10.55	10.50
FF20-35A-R11A	35	11.90	10.20	10.85	10.80
FF20-36A-R11A	36	12.20	10.50	11.15	11.10
FF20-37A-R11A	37	12.50	10.80	11.45	11.40
FF20-38A-R11A	38	12.80	11.10	11.75	11.70
FF20-39A-R11A	39	13.10	11.40	12.05	12.00
FF20-40A-R11A	40	13.40	11.70	12.35	12.30

© Specifications and/or dimensions in this catalogue are subject to change without notice.
 Your catalogue checking the latest specifications with our drawings would be highly appreciated.