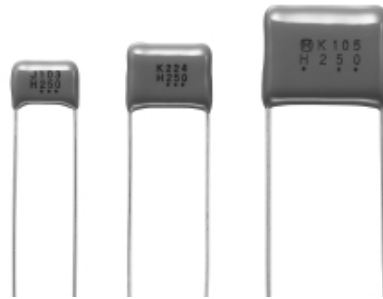


## Metallized Polyester Film Capacitor

Type: **ECQE(T)**

Non-inductive construction using metallized Polyester film with flame retardant epoxy resin coating



### ■ Features

- Self-healing property
- Excellent electrical characteristics
- Flame retardant epoxy resin coating
- Moisture resistance 85 °C, 85 % RH for 500 hours
- RoHS directive compliant

### ■ Recommended Applications

- General purpose usage

### ■ Explanation of Part Numbers

1	2	3	4	5	6	7	8	9	10	11	12	
<b>E</b>	<b>C</b>	<b>Q</b>	<b>E</b>							<b>T</b>		
Product code		Dielectric & construction		Rated volt.		Capacitance			Cap. Tol.	Suffix	Suffix	
				2	250 VDC	1A	125 VAC		J	±5 %	Suffix	Lead Form
				4	400 VDC	2A	250 VAC		K	±10 %	Blank	Straight
				6	630 VDC						B	Crimped lead
											3	Crimped taping (Ammo)
											6	Crimped taping (Ammo)

### ● Explanation of Part Number for Odd Size Taping

1	2	3	4	5	6	7	8	9	10	11	12	
<b>E</b>	<b>C</b>	<b>Q</b>	<b>E</b>							<b>R</b>		<b>T</b>
Product code		Dielectric & construction		Rated volt.		Capacitance			Suffix	Cap. Tol.	Suffix	

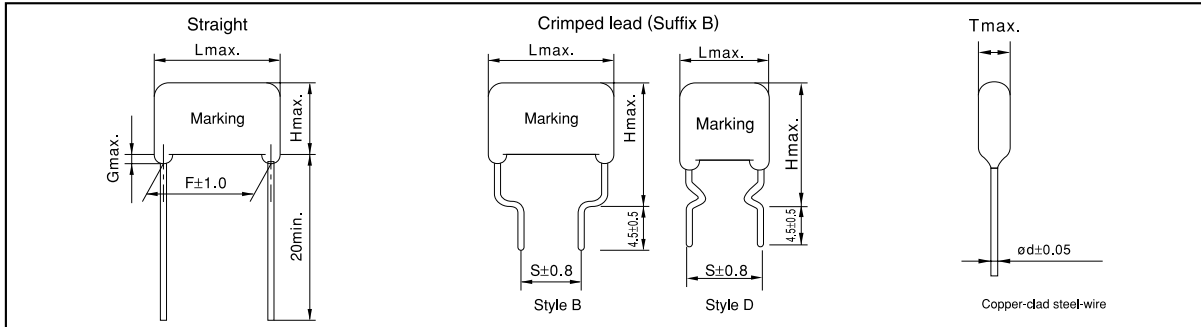
### ■ Specifications

Category temp. range (Including temperature-rise on unit surface)	250 VDC, 400 VDC, 630 VDC	-40 °C to +105 °C
	125 VAC, 250 VAC	-40 °C to +85 °C
Rated voltage	250 VDC, 400 VDC, 630 VDC (Derating of rated voltage by 1.25 %/°C at more than 85 °C) 125 VAC, 250 VAC	
Capacitance range	0.010 μF to 10 μF (E12)	
Capacitance tolerance	±5 % (J), ±10 % (K)	
Dissipation factor (tanδ)	tanδ ≤ 1.0 % (20 °C, 1 kHz)	
Withstand voltage	● Rated volt. 250 VDC to 630 VDC Between terminals : Rated volt.(VDC)×150 % 60 s	
	● Rated volt. 125 VAC, 250 VAC Between terminals : Rated volt.(VAC)×230 % 60 s Between terminals to enclosure : 1500 VAC 60 s	
Insulation resistance (IR)	250 VDC to 630 VDC: C ≤ 0.33 μF : IR ≥ 9000 MΩ C > 0.33 μF : IR ≥ 3000 MΩ · μF (20 °C, 100VDC, 60 s)	
	125 VAC, 250 VAC: IR ≥ 2000 MΩ (20 °C, 500 VDC, 60 s)	

\* In case of applying voltage in alternating current (50 Hz or 60 Hz sine wave) to a capacitor with DC rated voltage, please refer to the page of "Permissible voltage (R.M.S) in alternating current corresponding to DC rated voltage".

\* Voltage to be applied to ECQE1A (T) & ECQE2A (T) is only sine wave (50 Hz or 60 Hz).

### ■ Dimensions in mm (not to scale)

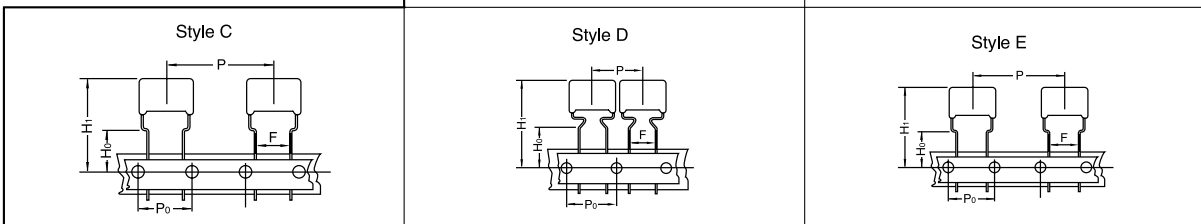


### ■ Packaging Specifications for Bulk Package

Packing quantity: 100 pcs./bag

### ■ Taping Specifications for Automatic Insertion

#### ● Taping style



\*Refer to the page of taping specifications.

#### ● Packaging Specifications

Type	Rated volt.	Cap. range (μF)	Taping style					Packing	suffix
			AD	AB	C	D	E		
ECQE(T)	250 VDC	0.010 to 0.15	○					Ammo	( ) T3
		0.18 to 0.33			○			Ammo	( ) T3
		0.39 to 1.5			○			Ammo	( ) T3
		0.010 to 0.33				○		Ammo	R( ) T
		0.39 to 1.5					○	Ammo	R( ) T
	400 VDC	0.010 to 0.033	○					Ammo	( ) T3
		0.039 to 0.10			○			Ammo	( ) T3
		0.12 to 0.47			○			Ammo	( ) T3
		0.010 to 0.10				○		Ammo	R( ) T
		0.12 to 0.47					○	Ammo	R( ) T
	630 VDC	0.010 to 0.047			○			Ammo	( ) T3
		0.056 to 0.22			○			Ammo	( ) T3
		0.010 to 0.047				○		Ammo	R( ) T
		0.056 to 0.22					○	Ammo	R( ) T
	125 VAC	0.27 to 0.47			○			Ammo	( ) T3
		0.010 to 0.10		○				Ammo	( ) T6
		0.12 to 0.22			○			Ammo	( ) T6
		0.010 to 0.22				○		Ammo	R( ) T
		0.27 to 0.47					○	Ammo	R( ) T
	250 VAC	0.056 to 0.22			○			Ammo	( ) T3
0.010 to 0.047				○			Ammo	( ) T6	
0.010 to 0.047					○		Ammo	R( ) T	
0.056 to 0.22						○	Ammo	R( ) T	

#### ● Lead Spacing

Style	Lead Spacing
AD	5.0 mm
AB	5.0 mm
C	5.0 mm
D	7.5 mm
E	7.5 mm

\*See the column "Rating, Dimensions & Quantity Box" for packing quantity.

### ■ Rating, Dimensions & Quantity/Ammo Box

● Rated voltage : 250 VDC, Capacitance tolerance : ±5 % (J), ±10 % (K)

Part No	Cap. ( $\mu$ F)	Dimensions (mm)								Quantity		
		L max.	T max.	H max.		F	S	G max.	$\phi$ d	Ammo 5 mm	Ammo 5 mm	Ammo 7.5 mm
				Straight	Crimped lead							
ECQE2103□T( )	0.010	10.8	4.3	7.4	12.4	7.5	7.5	1.0	0.60	1500	—	1800
ECQE2123□T( )	0.012	10.8	4.4	7.5	12.5	7.5	7.5	1.0	0.60			1700
ECQE2153□T( )	0.015	10.8	4.4	7.5	12.5	7.5	7.5	1.0	0.60			1700
ECQE2183□T( )	0.018	10.8	4.4	7.5	12.5	7.5	7.5	1.0	0.60			1700
ECQE2223□T( )	0.022	10.8	4.4	7.5	12.5	7.5	7.5	1.0	0.60			1700
ECQE2273□T( )	0.027	10.8	4.4	7.5	12.5	7.5	7.5	1.0	0.60			1700
ECQE2333□T( )	0.033	10.8	4.5	7.5	12.5	7.5	7.5	1.0	0.60			1700
ECQE2393□T( )	0.039	10.8	4.5	7.5	12.5	7.5	7.5	1.0	0.60			1700
ECQE2473□T( )	0.047	10.8	4.5	7.5	12.5	7.5	7.5	1.0	0.60			1700
ECQE2563□T( )	0.056	10.8	4.8	7.9	12.9	7.5	7.5	1.0	0.60			1600
ECQE2683□T( )	0.068	10.8	4.5	7.5	12.5	7.5	7.5	1.0	0.60	1700		
ECQE2823□T( )	0.082	10.8	4.9	8.0	13.0	7.5	7.5	1.0	0.60	1500		
ECQE2104□T( )	0.10	10.8	5.8	8.4	13.4	7.5	7.5	1.0	0.60	1000	—	1300
ECQE2124□T( )	0.12	10.8	6.0	9.0	14.0	7.5	7.5	1.0	0.60			1200
ECQE2154□T( )	0.15	10.8	6.0	10.8	15.8	7.5	7.5	1.0	0.60			1200
ECQE2184□T( )	0.18	12.5	5.0	10.3	15.3	10.0	10.0	1.0	0.60			1400
ECQE2224□T( )	0.22	12.5	5.5	10.5	15.5	10.0	10.0	1.0	0.60			1300
ECQE2274□T( )	0.27	12.5	6.0	11.5	16.5	10.0	10.0	1.0	0.60			700
ECQE2334□T( )	0.33	12.5	6.5	12.0	17.0	10.0	10.0	1.0	0.60			600
ECQE2394□T( )	0.39	19.0	4.9	12.0	17.0	15.0	10.0	1.0	0.60			800
ECQE2474□T( )	0.47	19.0	5.3	12.5	17.5	15.0	10.0	1.0	0.60			700
ECQE2564□T( )	0.56	19.0	5.5	13.0	18.0	15.0	10.0	1.0	0.60			800
ECQE2684□T( )	0.68	19.0	6.0	13.5	18.5	15.0	10.0	1.0	0.80	700		
ECQE2824□T( )	0.82	19.0	6.5	14.5	19.5	15.0	10.0	1.0	0.80	600		
ECQE2105□T( )	1.0	19.0	7.4	15.0	20.0	15.0	10.0	1.0	0.80	—	—	500
ECQE2125□T( )	1.2	19.0	8.0	15.9	20.9	15.0	10.0	1.0	0.80			400
ECQE2155□T( )	1.5	19.0	9.0	16.8	21.8	15.0	10.0	1.0	0.80			400
ECQE2185□T( )	1.8	26.5	7.5	15.5	20.5	22.5	15.0	1.0	0.80			—
ECQE2225□T( )	2.2	26.5	8.5	16.3	21.3	22.5	15.0	1.0	0.80			—
ECQE2275□T( )	2.7	26.5	9.4	17.0	22.0	22.5	15.0	1.0	0.80			—
ECQE2335□T( )	3.3	26.5	10.3	18.0	23.0	22.5	15.0	1.5	0.80			—
ECQE2395□T( )	3.9	26.5	11.0	20.5	25.5	22.5	15.0	1.5	0.80			—
ECQE2475□T( )	4.7	26.5	12.0	21.5	26.5	22.5	15.0	1.5	0.80			—
ECQE2565□T( )	5.6	31.5	11.8	21.0	26.0	27.5	22.5	1.5	0.80			—
ECQE2685□T( )	6.8	31.5	13.0	22.4	27.4	27.5	22.5	1.5	0.80	—		
ECQE2825□T( )	8.2	31.5	14.3	23.5	28.5	27.5	22.5	1.5	0.80	—		
ECQE2106□T( )	10.0	31.5	15.9	25.8	30.8	27.5	22.5	1.5	0.80	—		

Suffix for lead crimped or taped type  
 Cap. tol. code

style D: 0.010  $\mu$ F to 0.33  $\mu$ F  
 style B: 0.39  $\mu$ F to 10.0  $\mu$ F

### Rating, Dimensions & Quantity/Ammo Box

● Rated voltage : 400 VDC, Capacitance tolerance : ±5 % (J), ±10 % (K)

Part No.	Cap. (μF)	Dimensions (mm)								Quantity.						
		L <sub>max</sub>	T <sub>max</sub>	H <sub>max</sub>		F	S	G <sub>max</sub>	φd	Standard 5 mm	Odd size 5 mm	Odd size 7.5 mm				
				Straight	Crimped lead	Straight	Crimped lead	Straight								
ECQE4103□T( )	0.010	10.8	4.3	7.4	12.4	7.5	7.5	1.0	0.60	1500	—	1800				
ECQE4123□T( )	0.012	10.8	4.4	7.5	12.5	7.5	7.5	1.0	0.60			1700				
ECQE4153□T( )	0.015	10.8	4.4	7.5	12.5	7.5	7.5	1.0	0.60			1600				
ECQE4183□T( )	0.018	10.8	4.4	7.5	12.5	7.5	7.5	1.0	0.60			1400				
ECQE4223□T( )	0.022	10.8	4.8	7.9	12.9	7.5	7.5	1.0	0.60			1200				
ECQE4273□T( )	0.027	10.8	5.5	8.0	13.0	7.5	7.5	1.0	0.60			1000	900	1500		
ECQE4333□T( )	0.033	10.8	6.0	9.0	14.0	7.5	7.5	1.0	0.60					1400		
ECQE4393□T( )	0.039	12.5	4.9	8.0	13.0	10.0	10.0	1.0	0.60					1300		
ECQE4473□T( )	0.047	12.5	5.0	8.3	13.3	10.0	10.0	1.0	0.60					1200		
ECQE4563□T( )	0.056	12.5	5.0	10.0	15.0	10.0	10.0	1.0	0.60					—	800	700
ECQE4683□T( )	0.068	12.5	5.4	10.5	15.5	10.0	10.0	1.0	0.60	600						
ECQE4823□T( )	0.082	12.5	5.8	11.0	16.0	10.0	10.0	1.0	0.60	500						
ECQE4104□T( )	0.10	12.5	6.3	12.0	17.0	10.0	10.0	1.0	0.60	400						
ECQE4124□T( )	0.12	19.0	5.0	10.0	15.0	15.0	10.0	1.0	0.60	—	800					700
ECQE4154□T( )	0.15	19.0	5.0	12.4	17.4	15.0	10.0	1.0	0.60							600
ECQE4184□T( )	0.18	19.0	5.4	12.5	17.5	15.0	10.0	1.0	0.60			500				
ECQE4224□T( )	0.22	19.0	5.9	13.0	18.0	15.0	10.0	1.0	0.60			400				
ECQE4274□T( )	0.27	19.0	6.5	14.3	19.3	15.0	10.0	1.0	0.80			—	700			600
ECQE4334□T( )	0.33	19.0	7.0	14.9	19.9	15.0	10.0	1.0	0.80							500
ECQE4394□T( )	0.39	19.0	7.5	15.4	20.4	15.0	10.0	1.0	0.80					400		
ECQE4474□T( )	0.47	19.0	7.8	17.0	22.0	15.0	10.0	1.0	0.80					—	—	—
ECQE4564□T( )	0.56	26.5	6.5	16.0	21.0	22.5	15.0	1.0	0.80							
ECQE4684□T( )	0.68	26.5	7.0	16.5	21.5	22.5	15.0	1.0	0.80							
ECQE4824□T( )	0.82	26.5	7.9	17.3	22.3	22.5	15.0	1.0	0.80							
ECQE4105□T( )	1.0	26.5	8.5	18.0	23.0	22.5	15.0	1.0	0.80							
ECQE4125□T( )	1.2	26.5	9.5	18.9	23.9	22.5	15.0	1.0	0.80							
ECQE4155□T( )	1.5	31.5	9.5	19.0	24.0	27.5	22.5	1.0	0.80							
ECQE4185□T( )	1.8	31.5	11.0	20.5	25.5	27.5	22.5	1.5	0.80							
ECQE4225□T( )	2.2	31.5	11.0	22.0	27.0	27.5	22.5	1.5	0.80							

style D:0.010 μF to 0.10 μF  
style B:0.12 μF to 2.2 μF

● Rated voltage : 630 VDC, Capacitance tolerance : ±5 % (J), ±10 % (K)

Part No.	Cap. (μF)	Dimensions (mm)								Quantity.	
		L <sub>max</sub>	T <sub>max</sub>	H <sub>max</sub>		F	S	G <sub>max</sub>	φd	Odd size 5 mm	Odd size 7.5 mm
				Straight	Crimped lead	Straight	Crimped lead	Straight			
ECQE6103□T( )	0.010	12.5	4.5	7.5	12.5	10.0	10.0	1.0	0.60	900	1600
ECQE6123□T( )	0.012	12.5	4.5	7.8	12.8	10.0	10.0	1.0	0.60		
ECQE6153□T( )	0.015	12.5	5.0	8.2	13.2	10.0	10.0	1.0	0.60		
ECQE6183□T( )	0.018	12.5	4.9	10.0	15.0	10.0	10.0	1.0	0.60		
ECQE6223□T( )	0.022	12.5	5.3	10.5	15.5	10.0	10.0	1.0	0.60		
ECQE6273□T( )	0.027	12.5	5.5	10.9	15.9	10.0	10.0	1.0	0.60		
ECQE6333□T( )	0.033	12.5	6.0	11.9	16.9	10.0	10.0	1.0	0.60		
ECQE6393□T( )	0.039	12.5	6.0	13.4	18.4	10.0	10.0	1.0	0.60		
ECQE6473□T( )	0.047	12.5	6.5	13.5	18.5	10.0	10.0	1.0	0.60		
ECQE6563□T( )	0.056	19.0	5.4	10.5	15.5	15.0	10.0	1.0	0.60		
ECQE6683□T( )	0.068	19.0	5.8	11.0	16.0	15.0	10.0	1.0	0.60		
ECQE6823□T( )	0.082	19.0	6.5	12.0	17.0	15.0	10.0	1.0	0.60		
ECQE6104□T( )	0.10	19.0	6.3	14.0	19.0	15.0	10.0	1.0	0.60		
ECQE6124□T( )	0.12	19.0	6.3	14.5	19.5	15.0	10.0	1.0	0.80		
ECQE6154□T( )	0.15	19.0	7.5	15.4	20.4	15.0	10.0	1.0	0.80		
ECQE6184□T( )	0.18	19.0	8.0	16.0	21.0	15.0	10.0	1.0	0.80		
ECQE6224□T( )	0.22	19.0	9.0	16.5	21.5	15.0	10.0	1.0	0.80		
ECQE6274□T( )	0.27	26.5	7.0	16.5	21.5	22.5	15.0	1.0	0.80		
ECQE6334□T( )	0.33	26.5	7.8	17.0	22.0	22.5	15.0	1.0	0.80		
ECQE6394□T( )	0.39	26.5	8.5	17.9	22.9	22.5	15.0	1.0	0.80		
ECQE6474□T( )	0.47	26.5	9.3	18.5	23.5	22.5	15.0	1.0	0.80		
ECQE6564□T( )	0.56	26.5	10.0	20.0	25.0	22.5	15.0	1.5	0.80		
ECQE6684□T( )	0.68	26.5	11.5	21.0	26.0	22.5	15.0	1.5	0.80		
ECQE6824□T( )	0.82	31.5	11.3	20.5	25.5	27.5	22.5	1.5	0.80		
ECQE6105□T( )	1.0	31.5	12.5	21.9	26.9	27.5	22.5	1.5	0.80		
ECQE6125□T( )	1.2	31.5	13.5	23.0	28.0	27.5	22.5	1.5	0.80		
ECQE6155□T( )	1.5	31.5	15.3	24.7	29.7	27.5	22.5	1.5	0.80		
ECQE6185□T( )	1.8	31.5	16.8	27.0	32.0	27.5	22.5	1.5	0.80		
ECQE6225□T( )	2.2	31.5	19.5	29.0	34.0	27.5	22.5	1.5	0.80		

↑ Suffix for lead crimped or taped type.  
Cap. tol. code

style D:0.010 μF to 0.047 μF  
style B:0.056 μF to 2.2 μF

Design, Specifications are subject to change without notice. Ask factory for technical specifications before purchase and/or use. Whenever a doubt about safety arises from this product, please inform us immediately for technical consultation without fail.

### ■ Rating, Dimensions & Quantity/Ammo Box

● Rated voltage : 125 VAC, Capacitance tolerance : ±5 % (J), ±10 % (K)

Noise suppression Capacitors (Across-the-line)

Part No.	Cap. (μF)	Dimensions (mm)								Quantity.		
		L <sup>max.</sup>	T <sup>max.</sup>	H <sup>max.</sup>		F	S	G <sup>max.</sup>	φ d	Standard 5 mm	Odd size 5 mm	Odd size 7.5 mm
				Straight	Crimped lead	Straight	Crimped lead	Straight				
ECQE1A103□T( )	0.010	11.0	4.5	7.5	12.5	7.5	7.5	1.0	0.60	1500	—	1700
ECQE1A123□T( )	0.012	11.0	4.4	7.5	12.5	7.5	7.5	1.0	0.60			
ECQE1A153□T( )	0.015	11.0	4.4	7.5	12.5	7.5	7.5	1.0	0.60			
ECQE1A183□T( )	0.018	11.0	4.4	7.5	12.5	7.5	7.5	1.0	0.60			
ECQE1A223□T( )	0.022	11.0	4.4	7.5	12.5	7.5	7.5	1.0	0.60			
ECQE1A273□T( )	0.027	11.0	4.4	7.5	12.5	7.5	7.5	1.0	0.60			
ECQE1A333□T( )	0.033	11.0	4.5	7.8	12.8	7.5	7.5	1.0	0.60			
ECQE1A393□T( )	0.039	11.0	4.5	7.8	12.8	7.5	7.5	1.0	0.60			
ECQE1A473□T( )	0.047	11.0	5.5	8.0	13.0	7.5	7.5	1.0	0.60			
ECQE1A563□T( )	0.056	11.0	5.9	8.5	13.5	7.5	7.5	1.0	0.60			
ECQE1A683□T( )	0.068	11.0	6.3	9.4	14.4	7.5	7.5	1.0	0.60			
ECQE1A823□T( )	0.082	11.0	6.5	9.8	14.8	7.5	7.5	1.0	0.60			
ECQE1A104□T( )	0.10	11.0	6.5	11.8	16.8	7.5	7.5	1.0	0.60			
ECQE1A124□T( )	0.12	13.0	5.9	11.5	16.5	10.0	10.0	1.0	0.60			
ECQE1A154□T( )	0.15	13.0	6.5	12.0	17.0	10.0	10.0	1.0	0.60			
ECQE1A184□T( )	0.18	13.0	7.0	12.5	17.5	10.0	10.0	1.0	0.60			
ECQE1A224□T( )	0.22	13.0	7.5	13.4	18.4	10.0	10.0	1.0	0.60			
ECQE1A274□T( )	0.27	19.0	6.3	12.0	17.0	15.0	10.0	1.0	0.60			
ECQE1A334□T( )	0.33	19.0	6.9	12.5	17.5	15.0	10.0	1.0	0.60			
ECQE1A394□T( )	0.39	19.0	7.4	13.0	18.0	15.0	10.0	1.0	0.60			
ECQE1A474□T( )	0.47	19.0	7.5	15.3	20.3	15.0	10.0	1.0	0.60			

style D:0.010 μF to 0.22 μF  
style B:0.27 μF to 0.47 μF

● Rated voltage : 250 VAC, Capacitance tolerance : ±5 % (J), ±10 % (K)

Noise suppression Capacitors (Across-the-line)

Part No.	Cap. (μF)	Dimensions (mm)								Quantity.	
		L <sup>max.</sup>	T <sup>max.</sup>	H <sup>max.</sup>		F	S	G <sup>max.</sup>	φ d	Odd size 5 mm	Odd size 7.5 mm
				Straight	Crimped lead	Straight	Crimped lead	Straight			
ECQE2A103□T( )	0.010	13.0	5.5	10.8	15.8	10.0	10.0	1.0	0.60	800	1300
ECQE2A123□T( )	0.012	13.0	6.0	11.5	16.5	10.0	10.0	1.0	0.60	700	1200
ECQE2A153□T( )	0.015	13.0	6.3	9.9	14.9	10.0	10.0	1.0	0.60	600	1100
ECQE2A183□T( )	0.018	13.0	6.0	11.9	16.9	10.0	10.0	1.0	0.60	700	1200
ECQE2A223□T( )	0.022	13.0	6.0	11.5	16.5	10.0	10.0	1.0	0.60	800	1300
ECQE2A273□T( )	0.027	13.0	5.5	10.9	15.9	10.0	10.0	1.0	0.60	800	1300
ECQE2A333□T( )	0.033	13.0	6.0	11.9	16.9	10.0	10.0	1.0	0.60	700	1200
ECQE2A393□T( )	0.039	13.0	6.0	13.4	18.4	10.0	10.0	1.0	0.60	700	1200
ECQE2A473□T( )	0.047	13.0	6.5	14.4	19.4	10.0	10.0	1.0	0.60	600	1100
ECQE2A563□T( )	0.056	19.0	5.4	10.5	15.5	15.0	10.0	1.0	0.60	800	600
ECQE2A683□T( )	0.068	19.0	5.8	11.0	16.0	15.0	10.0	1.0	0.60	700	
ECQE2A823□T( )	0.082	19.0	6.3	12.0	17.0	15.0	10.0	1.0	0.60	600	500
ECQE2A104□T( )	0.10	19.0	6.3	14.0	19.0	15.0	10.0	1.0	0.60		
ECQE2A124□T( )	0.12	19.0	6.8	14.5	19.5	15.0	10.0	1.0	0.80		
ECQE2A154□T( )	0.15	19.0	7.5	15.4	20.4	15.0	10.0	1.0	0.80	500	400
ECQE2A184□T( )	0.18	19.0	8.0	16.0	21.0	15.0	10.0	1.0	0.80		
ECQE2A224□T( )	0.22	19.0	9.0	16.9	21.9	15.0	10.0	1.0	0.80	400	—
ECQE2A274□T( )	0.27	26.5	7.0	16.5	21.5	22.5	15.0	1.0	0.80		
ECQE2A334□T( )	0.33	26.5	7.8	17.0	22.0	22.5	15.0	1.0	0.80		
ECQE2A394□T( )	0.39	26.5	8.5	17.9	22.9	22.5	15.0	1.0	0.80		
ECQE2A474□T( )	0.47	26.5	9.3	18.5	23.5	22.5	15.0	1.0	0.80		

└─┬─ Suffix for lead crimped or taped type.  
└─┬─ Cap. tol. code

Style D:0.010 μF to 0.047 μF  
Style B:0.056 μF to 0.47 μF

#### Notice for AC rated

AC rated capacitors complying with clause 1 of "Electrical Appliance and Material Safety Law".

As for clause 2 of "Electrical Appliance and Material Safety Law", please use ECQUL type or ECQUG type.

When using these capacitors as a across-the-line capacitor, it shall be required to follow either item 1. or item 2. condition.

1. Capacitor shall be connected in parallel with varistor (Specified varistor voltage in table 1.)
2. Voltage applied for capacitor shall not exceed other than specified in table 1, when using these capacitors.

Table 1

Cap. Rated Voltage	Varistor voltage	Pulse voltage
125 VAC	250 V	250 V <sub>0-P</sub>
250 VAC	470 V	630 V <sub>0-P</sub>

Design, Specifications are subject to change without notice. Ask factory for technical specifications before purchase and/or use.  
Whenever a doubt about safety arises from this product, please inform us immediately for technical consultation without fail.